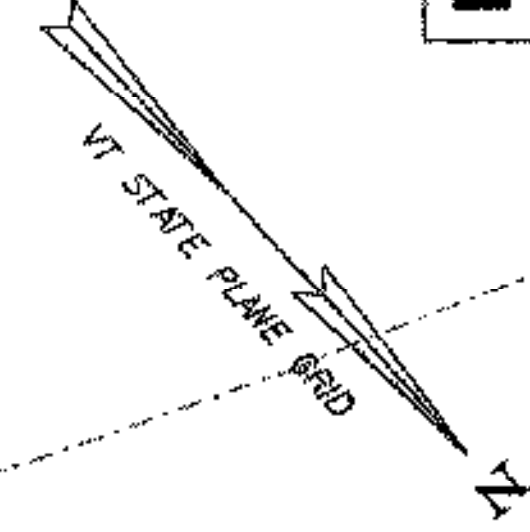
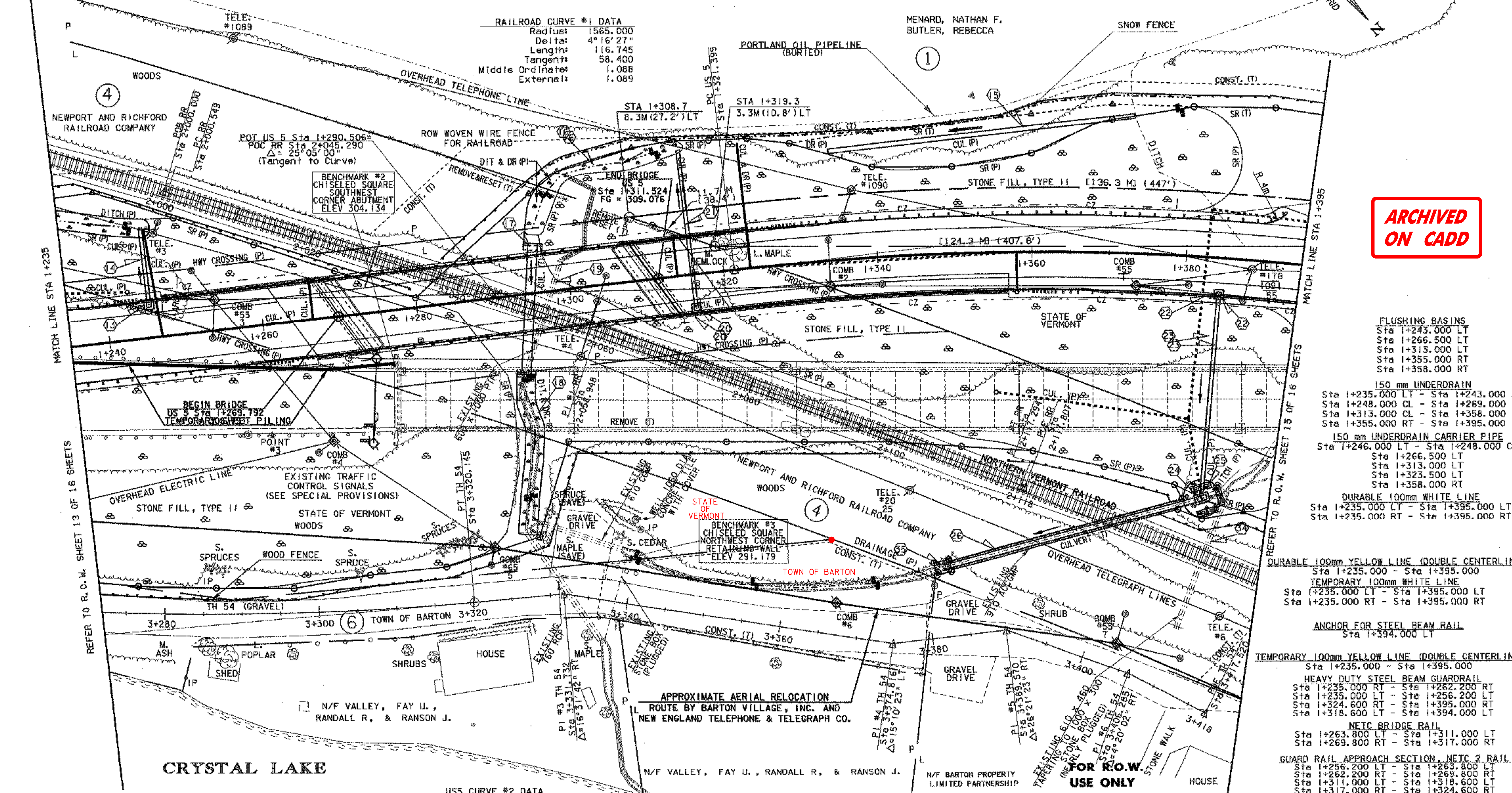


WOODS



**RAILROAD CURVE #1 DATA**

Radius:	1565.000
Delta:	4°16'27"
Length:	116.745
Tangent:	58.400
Middle Ordinate:	1.088
External:	1.089



**ARCHIVED ON CADD**

- FLUSHING BASINS**  
 Sta 1+243.000 LT - Sta 1+243.000 LT  
 Sta 1+266.500 LT  
 Sta 1+313.000 LT  
 Sta 1+355.000 RT - Sta 1+355.000 RT  
 Sta 1+358.000 RT
- 150 mm UNDERDRAIN**  
 Sta 1+235.000 LT - Sta 1+243.000 LT  
 Sta 1+248.000 CL - Sta 1+269.000 CL  
 Sta 1+313.000 CL - Sta 1+358.000 CL  
 Sta 1+355.000 RT - Sta 1+395.000 LT
- 150 mm UNDERDRAIN CARRIER PIPE**  
 Sta 1+246.000 LT - Sta 1+248.000 CL  
 Sta 1+266.500 LT  
 Sta 1+313.000 LT  
 Sta 1+323.500 LT  
 Sta 1+358.000 RT
- DURABLE 100mm WHITE LINE**  
 Sta 1+235.000 LT - Sta 1+395.000 LT  
 Sta 1+235.000 RT - Sta 1+395.000 RT

- DURABLE 100mm YELLOW LINE (DOUBLE CENTERLINE)**  
 Sta 1+235.000 - Sta 1+395.000
- TEMPORARY 100mm WHITE LINE**  
 Sta 1+235.000 LT - Sta 1+395.000 LT  
 Sta 1+235.000 RT - Sta 1+395.000 RT
- ANCHOR FOR STEEL BEAM RAIL**  
 Sta 1+394.000 LT

- TEMPORARY 100mm YELLOW LINE (DOUBLE CENTERLINE)**  
 Sta 1+235.000 - Sta 1+395.000
- HEAVY DUTY STEEL BEAM GUARDRAIL**  
 Sta 1+235.000 RT - Sta 1+262.200 RT  
 Sta 1+235.000 LT - Sta 1+256.200 LT  
 Sta 1+324.600 RT - Sta 1+395.000 RT  
 Sta 1+318.600 LT - Sta 1+394.000 LT
- NETIC BRIDGE RAIL**  
 Sta 1+263.800 LT - Sta 1+311.000 LT  
 Sta 1+269.800 RT - Sta 1+317.000 RT
- GUARD RAIL APPROACH SECTION, NETIC 2 RAIL**  
 Sta 1+256.200 LT - Sta 1+263.800 LT  
 Sta 1+262.200 RT - Sta 1+269.800 RT  
 Sta 1+311.000 LT - Sta 1+318.600 LT  
 Sta 1+317.000 RT - Sta 1+324.600 RT

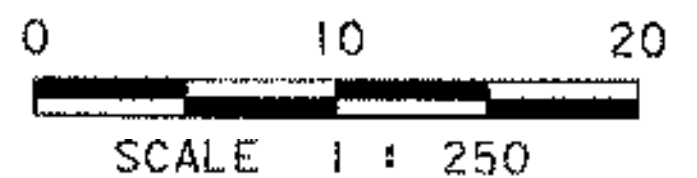
- TREATED TIMBER CURB**  
 Sta 1+235.000 LT - Sta 1+252.000 LT  
 Sta 1+357.000 RT - Sta 1+395.000 RT
- REMOVE EXISTING GUARDRAIL**  
 Sta 1+235.000 LT - Sta 1+276.000 LT (2)

**EXISTING BRIDGE INFO**  
 (5) SPAN RIVETED PLATE GIRDER  
 CONCRETE SLAB APPROACH SPAN (NORTH END)  
 SPANS 22400 & 3 @ 28600 & 22400 & 9000  
 OVERALL LENGTH = 141500  
 CONCRETE DECK, ALUMINUM RAIL  
 24' CURB TO CURB  
 BUILT FACH 55J (1) 1934  
 REPAIRED STO 41-5-5M 1967

**USS CURVE #2 DATA**

Radius:	349.400
Delta:	29°11'40"
Length:	178.033
Tangent:	90.994
Chord:	176.113
Middle Ordinate:	11.278
External:	11.654
Max. Bank Rate:	0.070

**LAYOUT #3**



**LEGEND**

	HAY BALES
	SILT FENCE

LINES SHOWN ON THIS PLAN AS EXISTING PROPERTY LINES P/L ARE BELIEVED TO BE ACCURATE BUT SHOULD NOT BE RELIED UPON FOR PURPOSES UNRELATED TO THE STATE OF VERMONT ACQUISITION OF LAND AND RIGHTS FOR THIS PROJECT.

SEE SHEET 26 FOR DRAINAGE DETAILS

**DATUM**

VERTICAL	ASSUMED
HORIZONTAL	NAD 83 (93)

PROJECT: <b>BARTON</b>	PROJECT NO. <b>STP 0113 (58) S</b>
DESIGN FILE NAME: 96c116/structures/sc116bdr.dgn	PLOT DATE: 03-JAN-2002
IPARM FILE NAME: sc1161a3.i	SURVEY DATE: 8/96,5/99
SURVEYED BY: R. BULLOCK, R. GILMAN	DRAWN BY: P.G. JARVIS
SQUAD LEADER: C.P. WILLIAMS	R. O. W. SHEET 14 OF 16 SHEETS
	86 OF 120