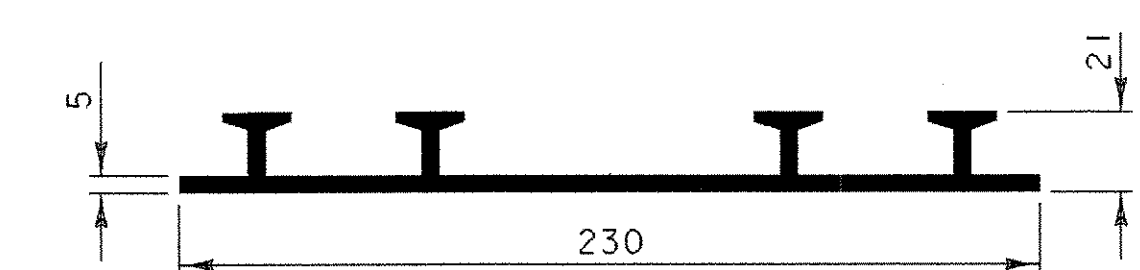


TYPICAL SECTION BETWEEN GIRDERS

(NORMAL TO ϕ BEARING)
SCALE 1 : 5



P.V.C. WATERSTOP FOR CONSTRUCTION JOINTS

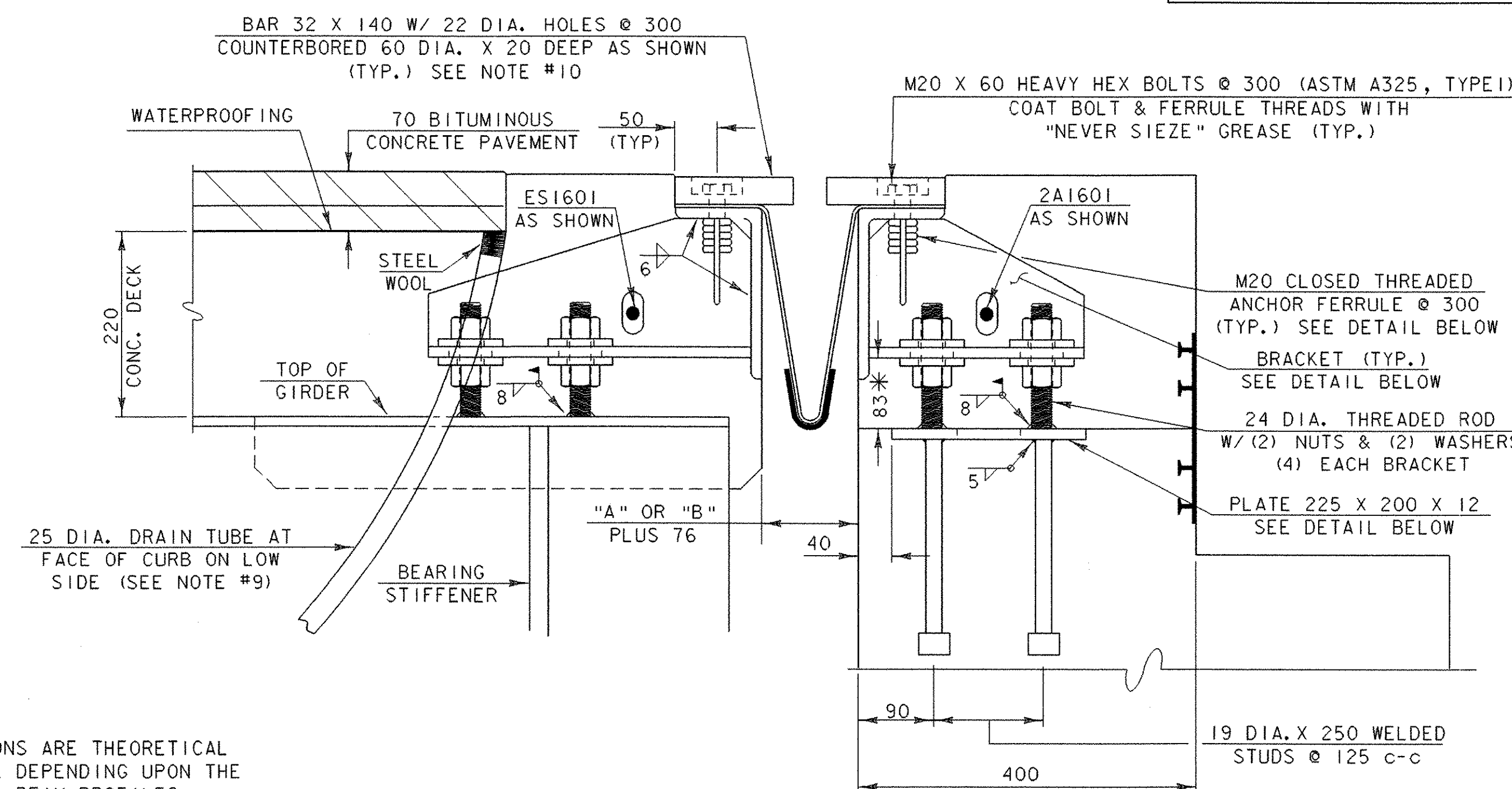
NOT TO SCALE

THE COST FOR P.V.C. WATERSTOP SHALL BE INCLUDED IN THE UNIT PRICE BID FOR CONCRETE. OTHER CONFIGURATIONS MAY BE USED UPON APPROVAL OF THE STRUCTURES ENGINEER.

EXPANSION JOINT NOTES

1. DETAILS ON THIS SHEET ARE FOR ITEM 516.10 "BRIDGE EXPANSION JOINT".
2. PREFORMED FABRIC MATERIAL SHALL BE CONTINUOUS AND SHALL CONFORM TO SUBSECTION 707.07
3. BUTYL RUBBER TAPE SHALL CONFORM TO AASHTO SPECIFICATION M-198, TYPE II.
4. THE FINAL FINISH OF THE EXPANSION DEVICE SHALL BE COVERED DURING THE PLACING OF BRIDGE DECK CONCRETE.
5. ALL STEEL COMPONENTS SHALL BE AASHTO M270/M270M GRADE 250 GALVANIZED OR METALIZED AS PER SUBSECTION 506.15 (a) OR (b) UNLESS OTHERWISE SPECIFIED.
6. THE ITEM "BRIDGE EXPANSION JOINT" SHALL INCLUDE THE FABRICATION AND ERECTION OF THE COMPLETE JOINT ASSEMBLY INCLUDING ALL STEEL PLATES, BRACKETS, ANGLES, WELDED STUDS OR RODS, PREFORMED FABRIC DRAIN TROUGH MATERIAL AND PLASTIC DRAIN TUBES, BUTYL RUBBER TAPE AND ANY OTHER MISCELLANEOUS MATERIAL NECESSARY TO INSTALL THE JOINT.
7. THE 102 X 203 X 12.7 ANGLES SHALL BE FURNISHED AS ONE CONTINUOUS PIECE. THE 32 X 140 BARS EACH SIDE OF THE JOINT SHALL BE PROVIDED IN TWO EQUAL LENGTHS.
8. COAT CONCRETE CONTACT SURFACES WITH EPOXY BONDING COMPOUND MEETING THE REQUIREMENTS OF SUBSECTION 719.02. PAYMENT SHALL BE INCLUDED IN THE UNIT PRICE BID FOR ITEM 516.10 "BRIDGE EXPANSION JOINT".
9. A 25 DIAMETER PLASTIC DRAIN TUBE SHALL BE INSTALLED AS SHOWN AT THE FACE OF CURB. THE UPPER END IS TO BE PLUGGED WITH STEEL WOOL AND THE LOWER END IS TO EXTEND BELOW THE BOTTOM OF THE ADJACENT STRINGER. THE DRAIN TUBES SHALL BE FASTENED TO THE STRINGERS USING A METHOD APPROVED BY THE ENGINEER. THE PLASTIC DRAIN TUBE SHALL MEET THE REQUIREMENTS OF SECTION 740.01.
10. FILL COUNTERBORED HOLES WITH HOT POURED JOINT SEALER AFTER BOLT INSTALLATION. PAYMENT FOR THE WORK SHALL BE SUBSIDIARY TO ITEM 516.10.
11. PAYMENT FOR WATERSTOP SHALL BE SUBSIDIARY TO CONCRETE PAY ITEM.
12. A DRIP BEAD OF 6 X 180 STRIP OF PREFORMED MATERIAL SHALL BE CEMENTED TO THE BOTTOM OF THE FABRIC TROUGH USING AN ADHESIVE APPROVED BY THE MANUFACTURER. THE DRIP BEAD SHALL BE APPLIED 25mm FROM THE DOWNSPOUT END OF THE TROUGH.
13. FABRIC TROUGH SHALL BE THOROUGHLY CLEANED AND FLUSHED AFTER PAVING OPERATIONS.
14. THE EXPANSION JOINT SHALL BE SHOP ASSEMBLED AND SHIPPED AS ONE UNIT.
15. THE THREADED RODS SHALL MEET THE REQUIREMENTS OF A 307, GR. C.

* THESE DIMENSIONS ARE THEORETICAL AND MAY CHANGE DEPENDING UPON THE OUTCOME OF THE BEAM PROFILES



TYPICAL SECTION AT GIRDERS

(NORMAL TO ϕ BEARING)
SCALE 1 : 5

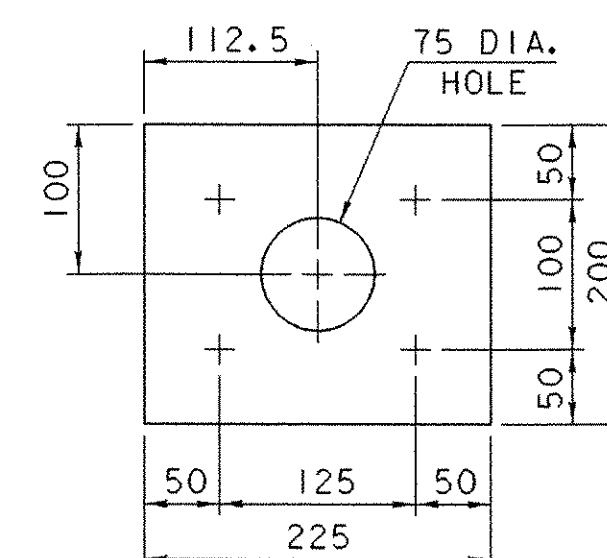
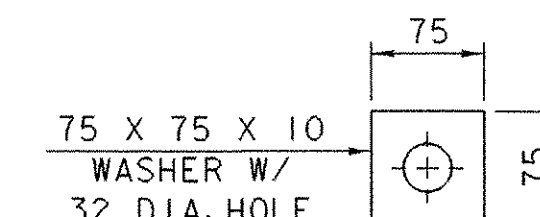


PLATE PLAN

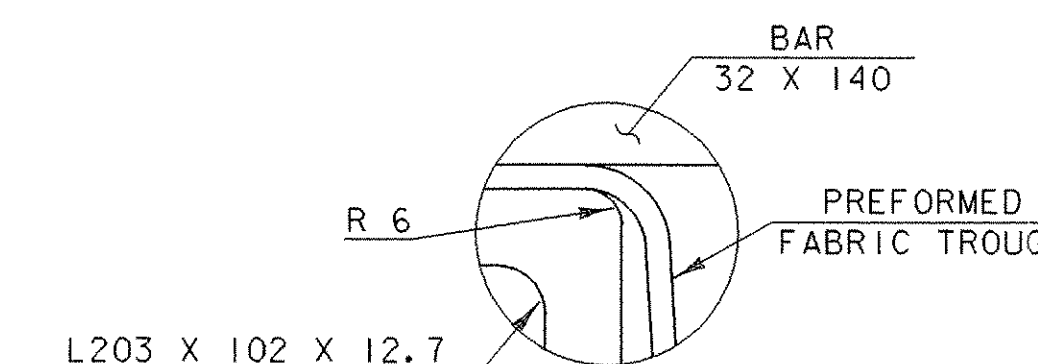
SCALE = 1 : 5
(NO GALVANIZING REQUIRED)



WASHER FOR BRACKET

SCALE = 1 : 5

ALL PLATES 12 THICK

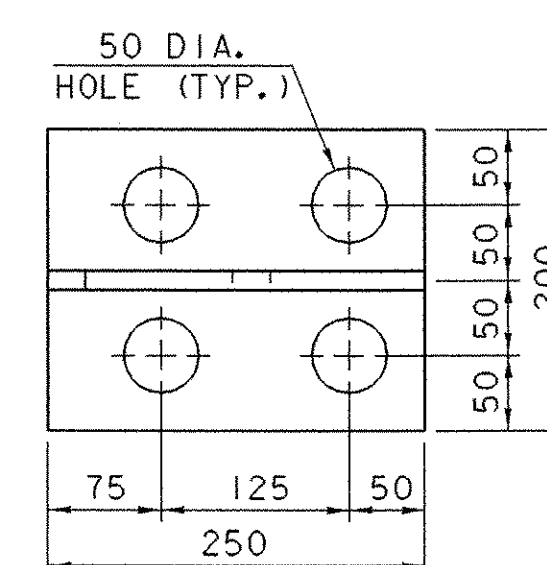


DETAIL "A"

NOT TO SCALE

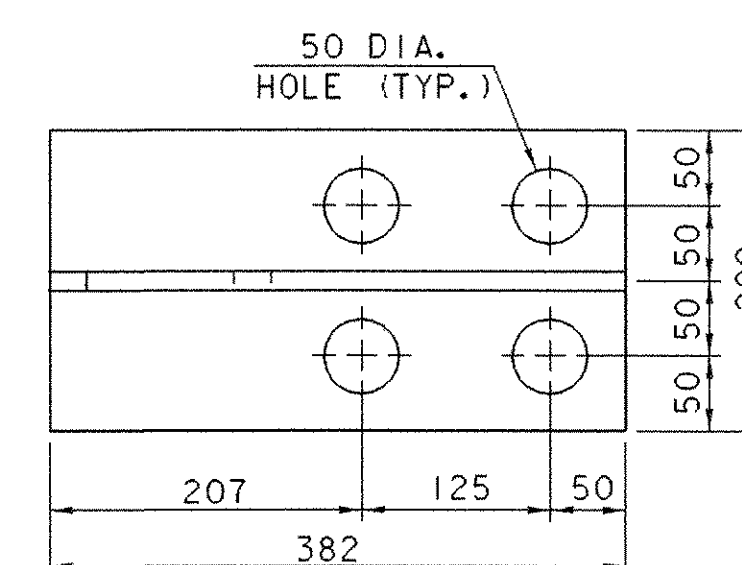
ANCHOR FERRULE

SCALE 1 : 5



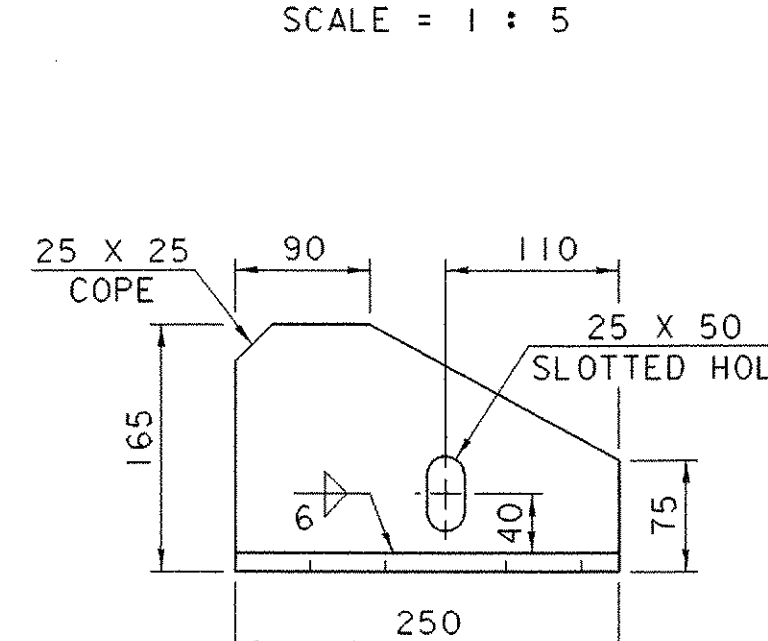
BACKWALL BRACKET PLAN

SCALE = 1 : 5



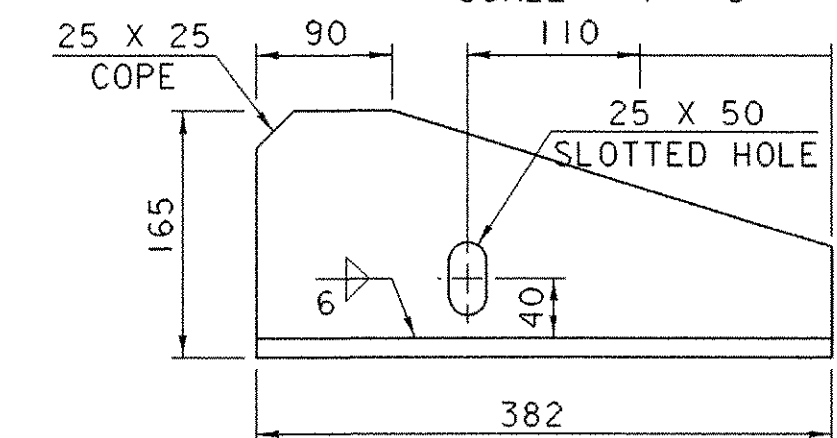
GIRDER BRACKET PLAN

SCALE = 1 : 5



BACKWALL BRACKET ELEVATION

SCALE = 1 : 5



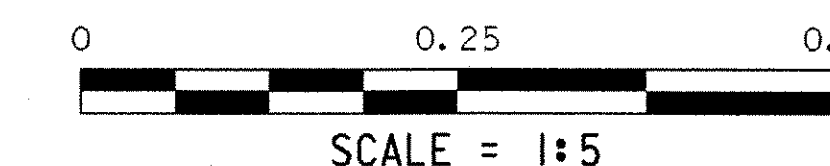
GIRDER BRACKET ELEVATION

SCALE = 1 : 5

TEMP	"A" DIST.	"B" DIST.
-15°C	79	55
-5°C	74	50
5°C	69	45
15°C	64	40
25°C	59	35
35°C	54	30
45°C	49	25

"A" IS THE SETTING BEFORE ANY DEAD LOADS ARE IN PLACE.

"B" IS THE FINAL SETTING AFTER ALL DEAD LOADS ARE IN PLACE.



PROJECT NAME: BARTON
PROJECT NUMBER: STP 0113 (58) S
FILE NAME: 96c116/STRUCTURES/sc116joint.dgn PLOT DATE: 03-JAN-2002
IPARM NAME: 96c116/STRUCTURES/sc116expj13.i DRAWN BY: W.B. SYMONDS
PROJECT LEADER: C.P. WILLIAMS CHECKED BY: W.B. SYMONDS
DESIGNED BY: W.B. SYMONDS
EXPANSION JOINT TYPICAL SECTION SHEET 57 OF 120