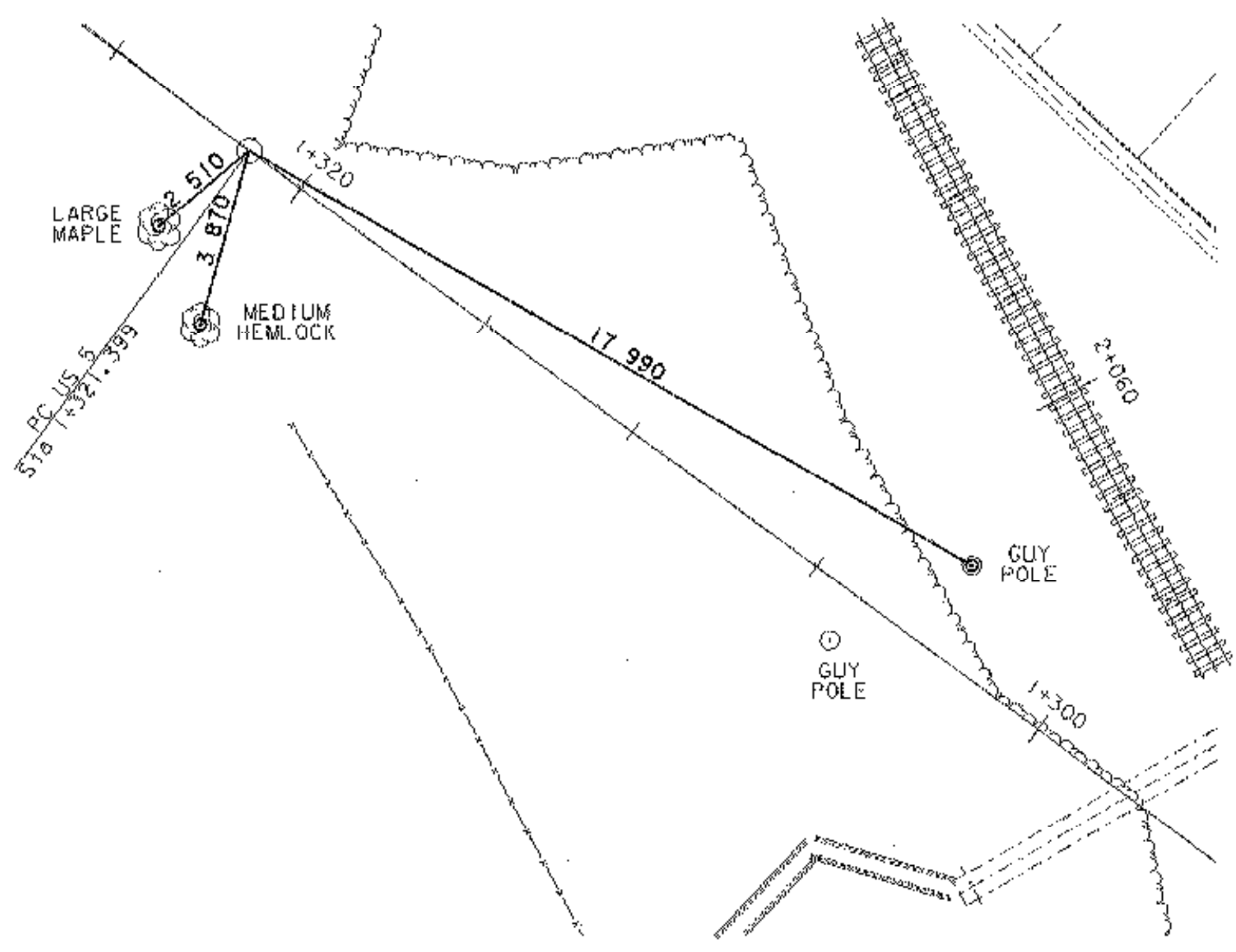


NEW ALIGNMENT TIE INFORMATION

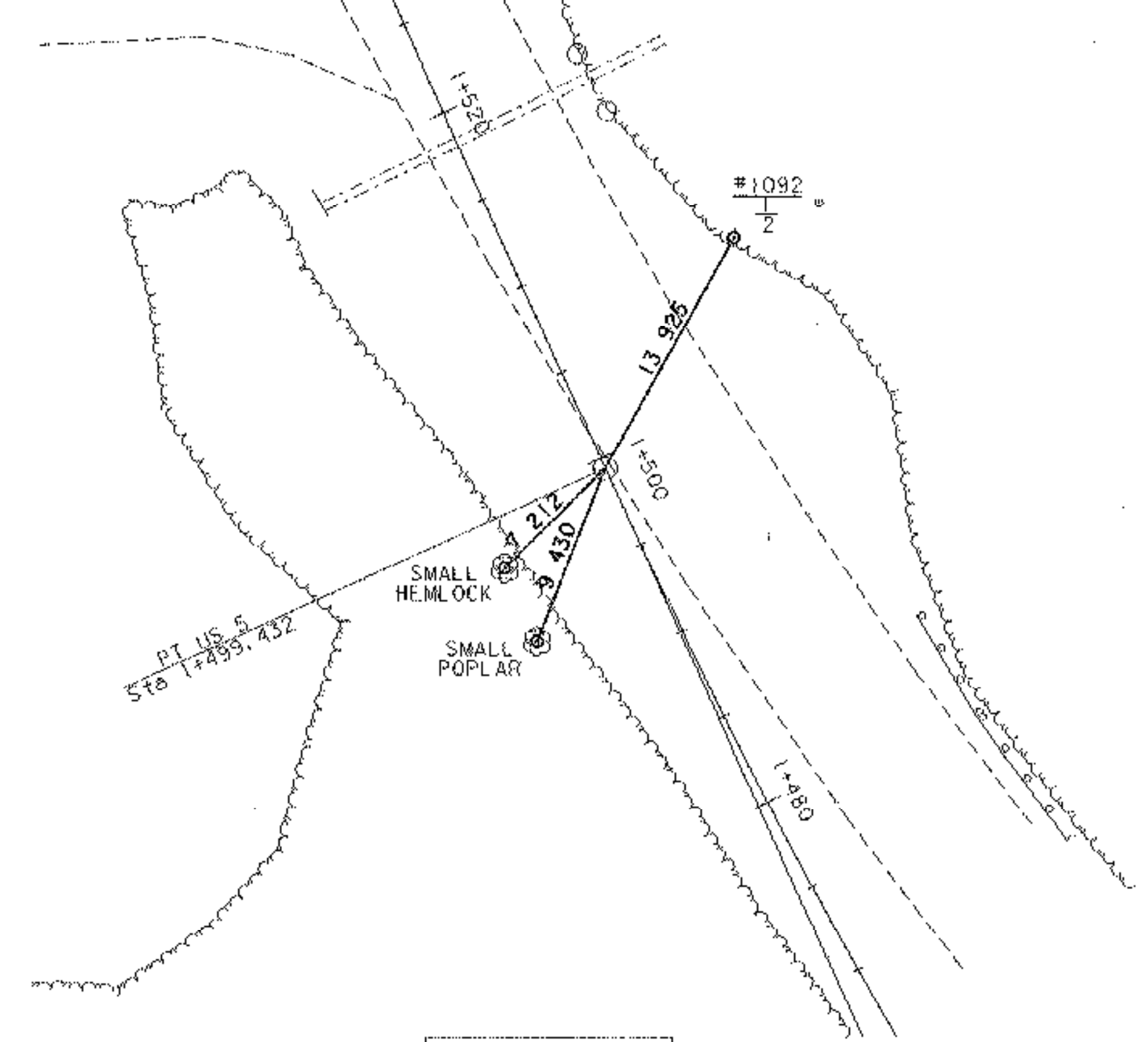


MAINLINE
PC #2



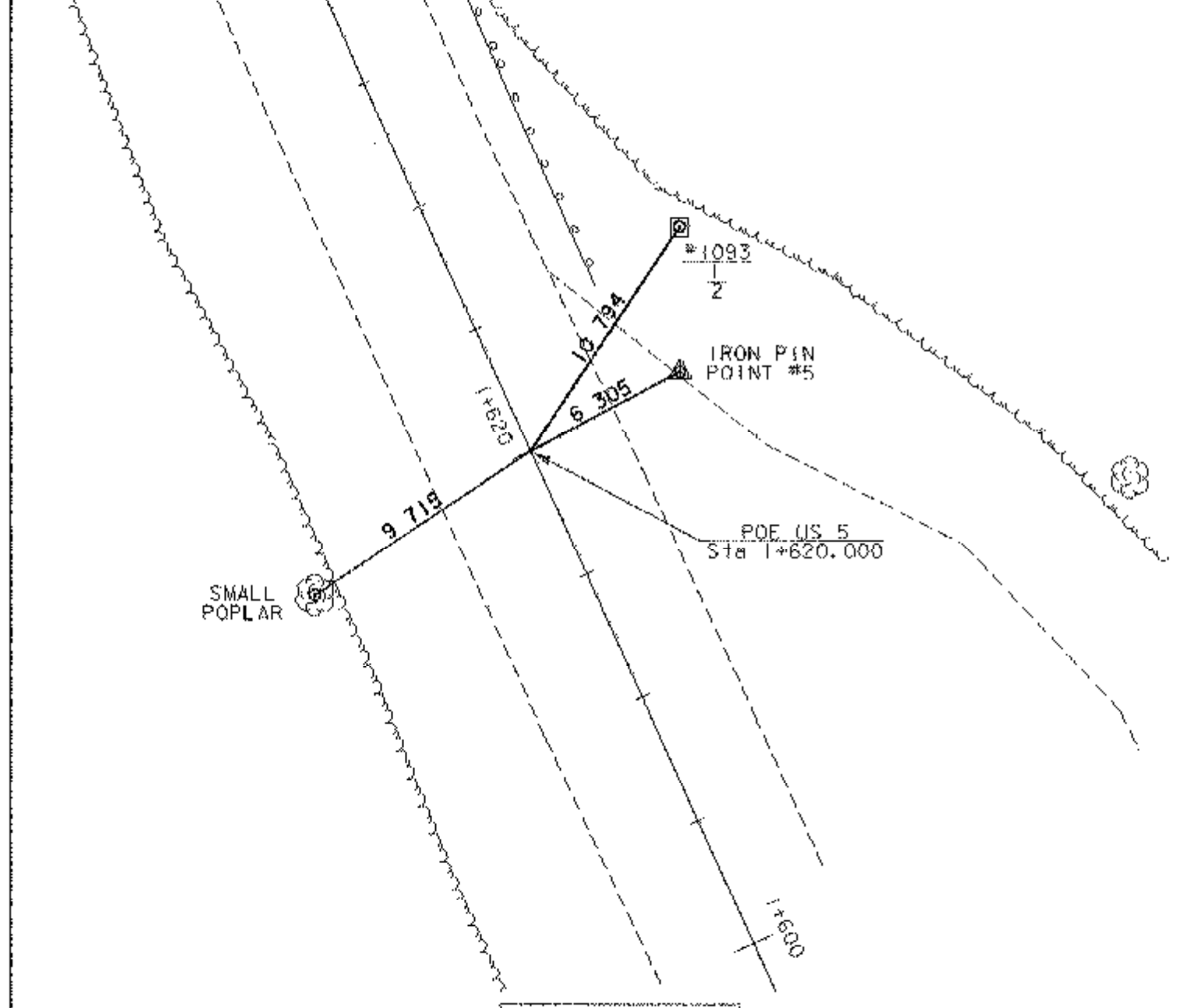
N = 248,057.7779
E = 526,868.7097

MAINLINE
PT #2



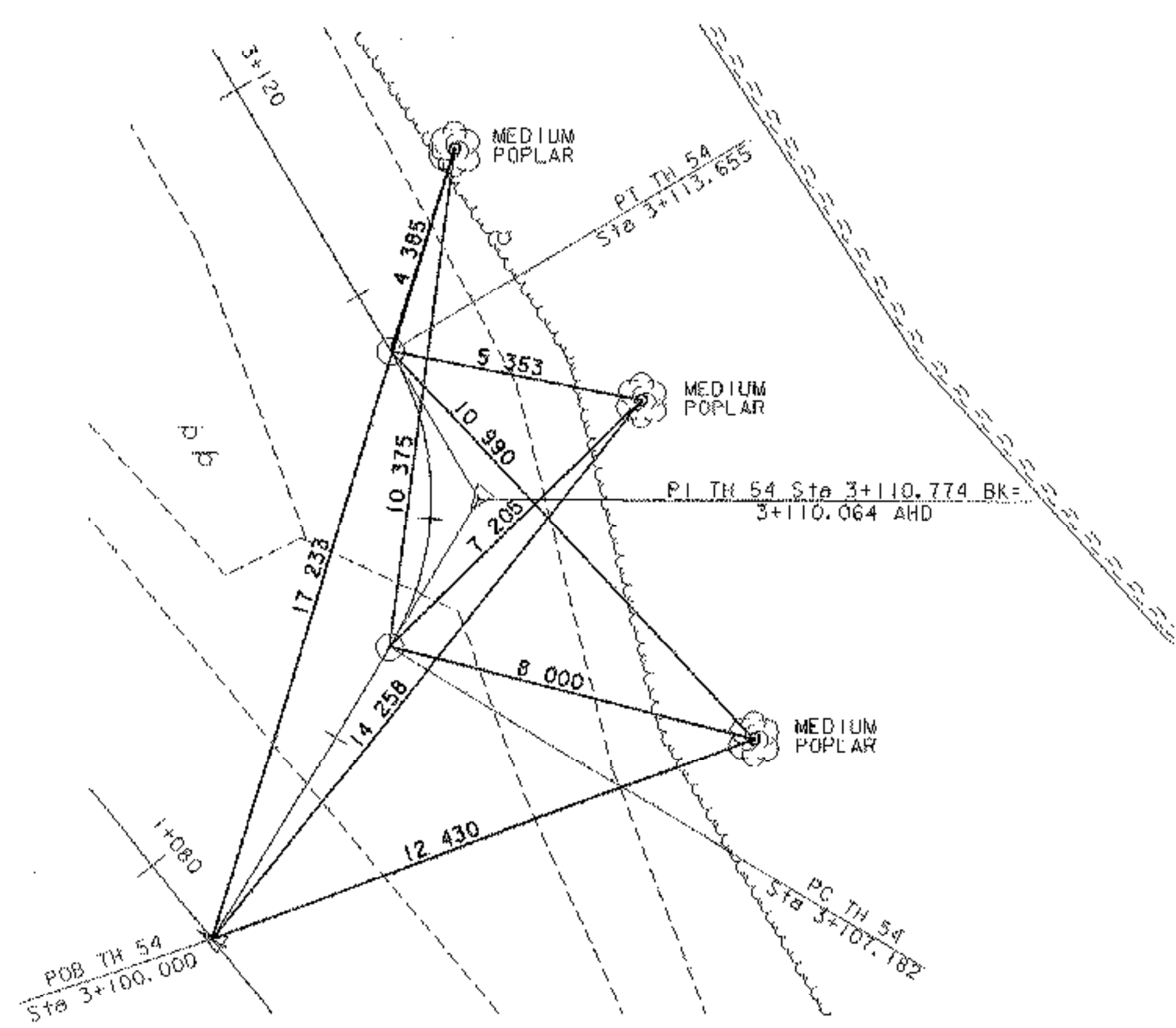
N = 248,194.4787
E = 526,757.6750

MAINLINE
POE



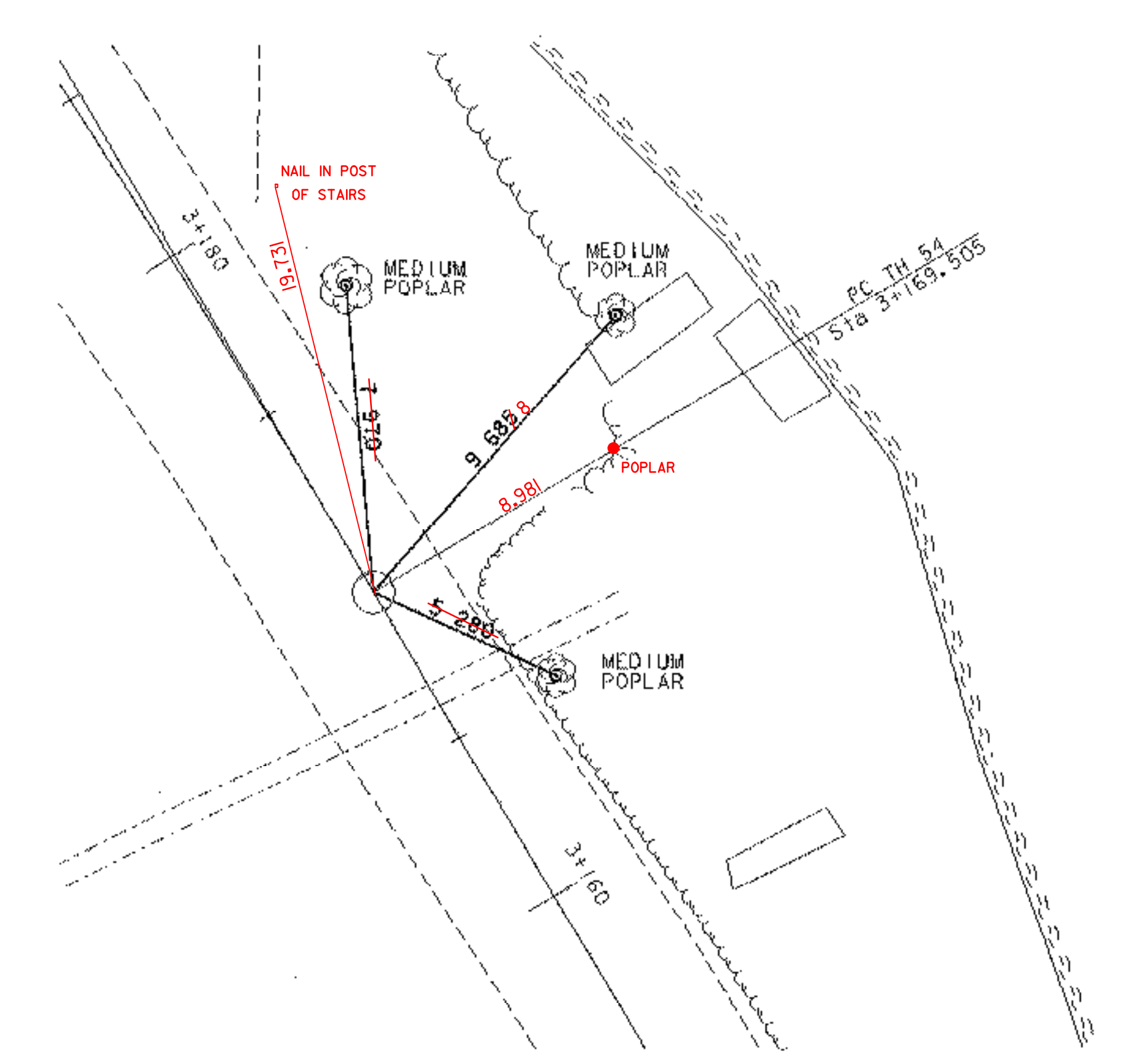
N = 248,569.5700
E = 526,677.9260

TH 54
POB, PC #1, PT #1



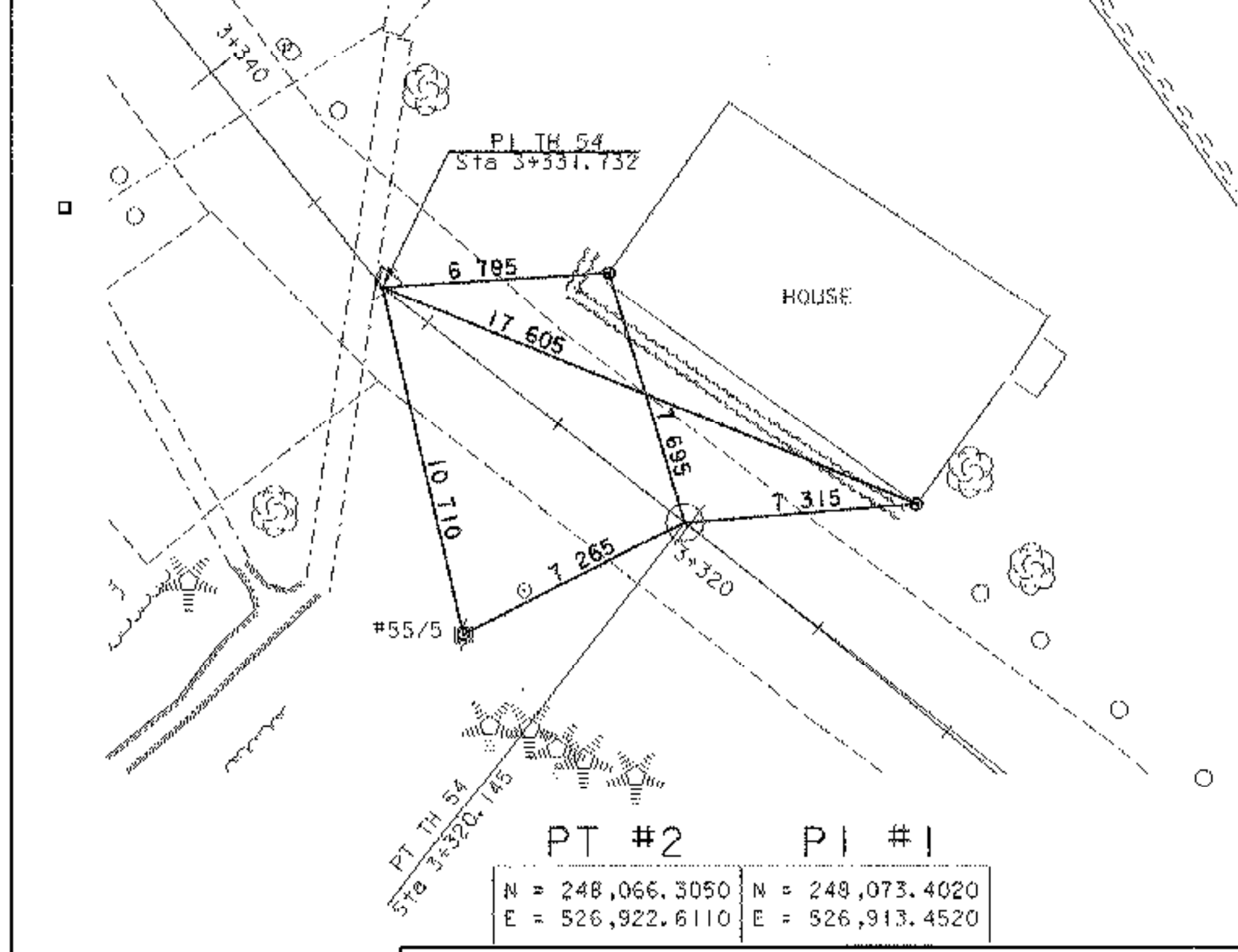
DATUM	POB	PC #1	PT #1
VERTICAL	NAVD 88		
HORIZONTAL	NAD 83 (92)		
	N = 247,893.6900 E = 527,046.4580	N = 247,893.8370 E = 527,050.1720	N = 247,906.0000 E = 527,050.1990

TH 54
PC #2



N = 247,954.0460
E = 527,021.7250

TH 54
PT #2, PI #1



PT #2 PI #1
N = 248,066.3050 N = 248,073.4020
E = 526,922.6110 E = 526,913.4520

**ARCHIVED
ON CADD**

ALL TIES ARE SHOWN NOT TO SCALE	
PROJECT: BARTON	PROJECT NO.: STP 0113 (58) S
DESIGN FILE NAME: 96c06/structures/sc16tie.dgn	PLOT DATE: 03-JAN-2002
IPARM FILE NAME: sc16+12.1	SURVEY DATE: 8/96.5/99
SURVEYED BY: R. BULLOCK, R. GILMAN	DRAWN BY: P.C. JARVIS
SQUAD LEADER: C.P. WILLIAMS	TIE SHEET
	SHEET: 8 OF 120