

GEODETIC CONTROL INFORMATION



GENERAL LOCATION: Barton, VT. From the intersection of US Route 5 and VT Route 16 South in Barton at the Veterans War Memorial go south on US Route 5 for 2.9 km (1.8 mi) to the mark on the left. The mark is 20 m (65.6 ft) southeast of the centerline of TH 54, 19 m (62.3 ft) west southwest of the edge of Crystal Lake, 8.3 m (27.2 ft) south of a 0.1 m (0.3 ft) Poplar tree, 7.1 m (23.3 ft) east northeast of and 0.3 m (1.0 ft) lower than the centerline of US Route 5 and 0.3 m (1.0 ft) west southwest of a fiberglass witness post.

GENERAL LOCATION: Barton, VT. From the intersection of US Route 5 and VT Route 16 South in Barton at the Veterans War Memorial go south on US Route 5 for 3.7 km (2.3 mi) to the mark on the left. The mark is 7.5 m (24.6 ft) east of and 0.3 m (1.0 ft) lower than the centerline of US Route 5, 2.4 m (7.9 ft) southwest of a metal pipe property corner, 1.3 m (4.3 ft) south southeast of the furthest north metal guardrail post, 0.5 m (1.6 ft) east of a three cable guardrail and 0.3 m (1.0 ft) west of a fiberglass witness post.

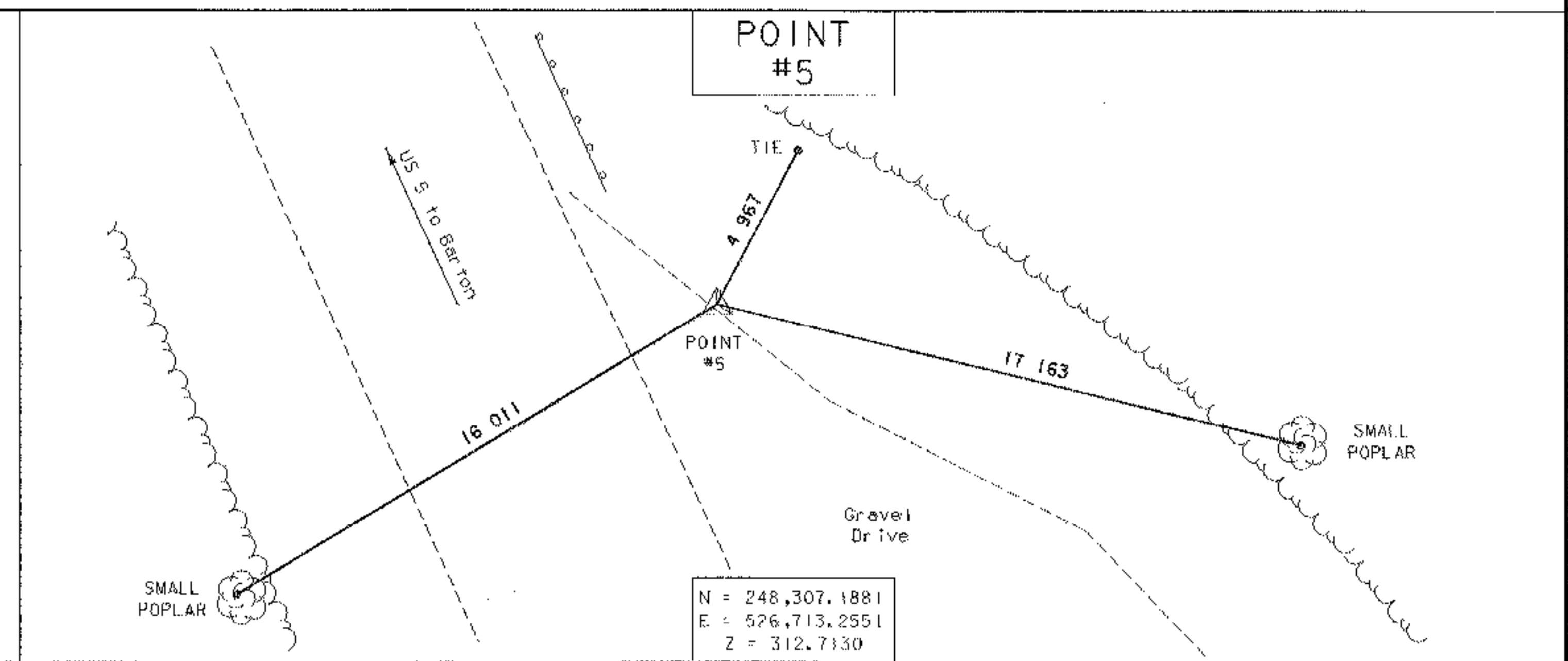
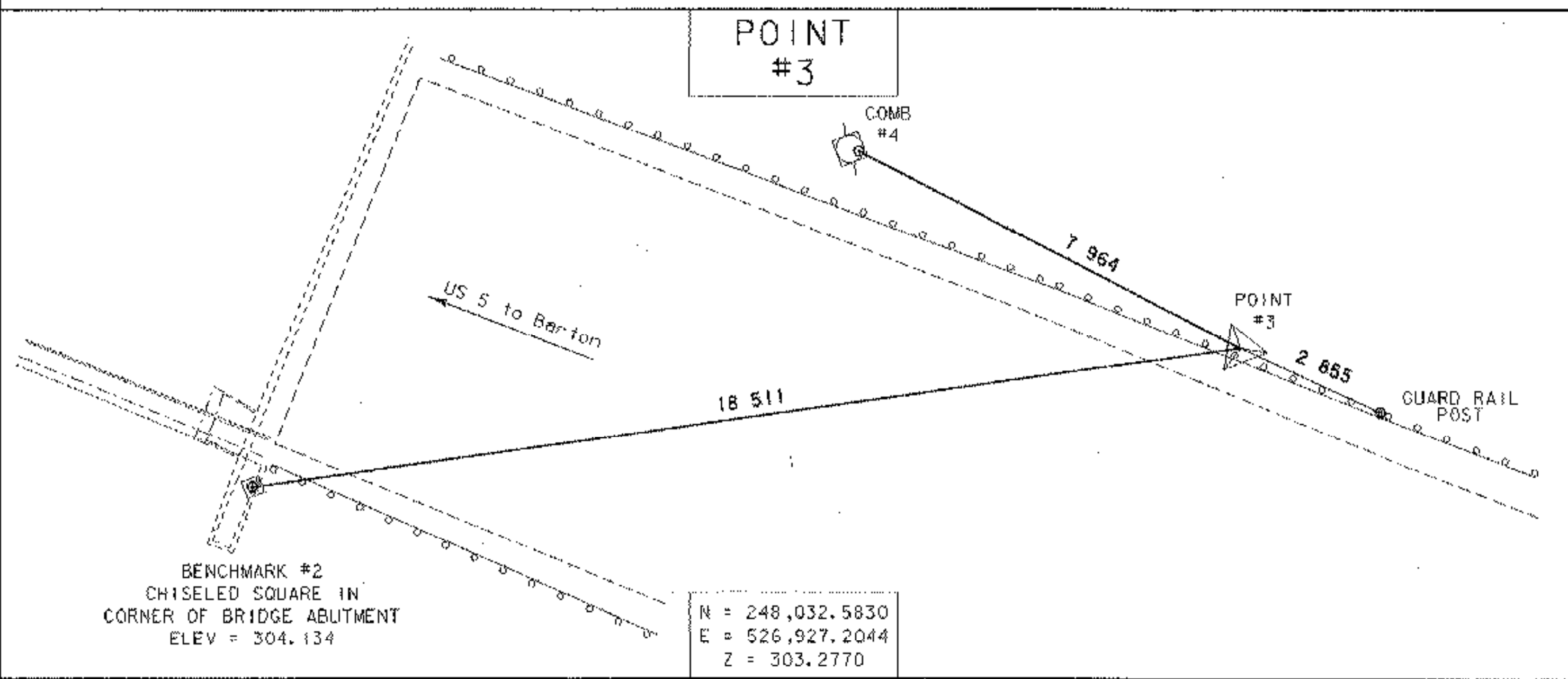
"CRYSTAL LAKE"
(NOT SHOWN)
N = 247,879.948 m
E = 527,065.609 m
Z = 243.120 m
Survey Disk set into the top of a
7' x 4' rock outcrop.

"CRYSTAL LAKE AZ MK"
(NOT SHOWN)
N = 247,222.181 m
E = 527,565.638 m
Z = Approximately 300.000 m
Survey Disk set into the top of an
irregular mass of concrete.

POINT
#2

POINT
#1

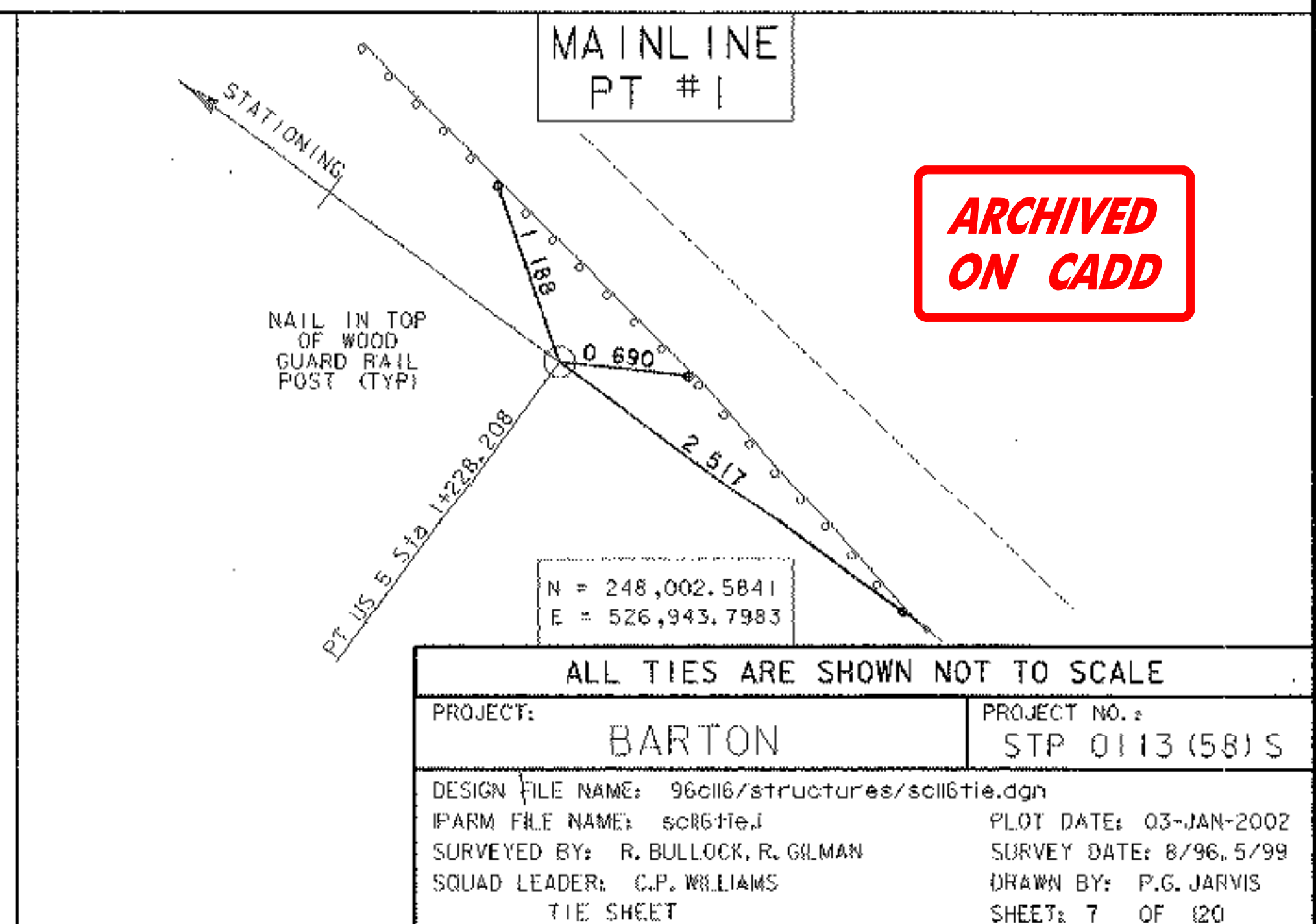
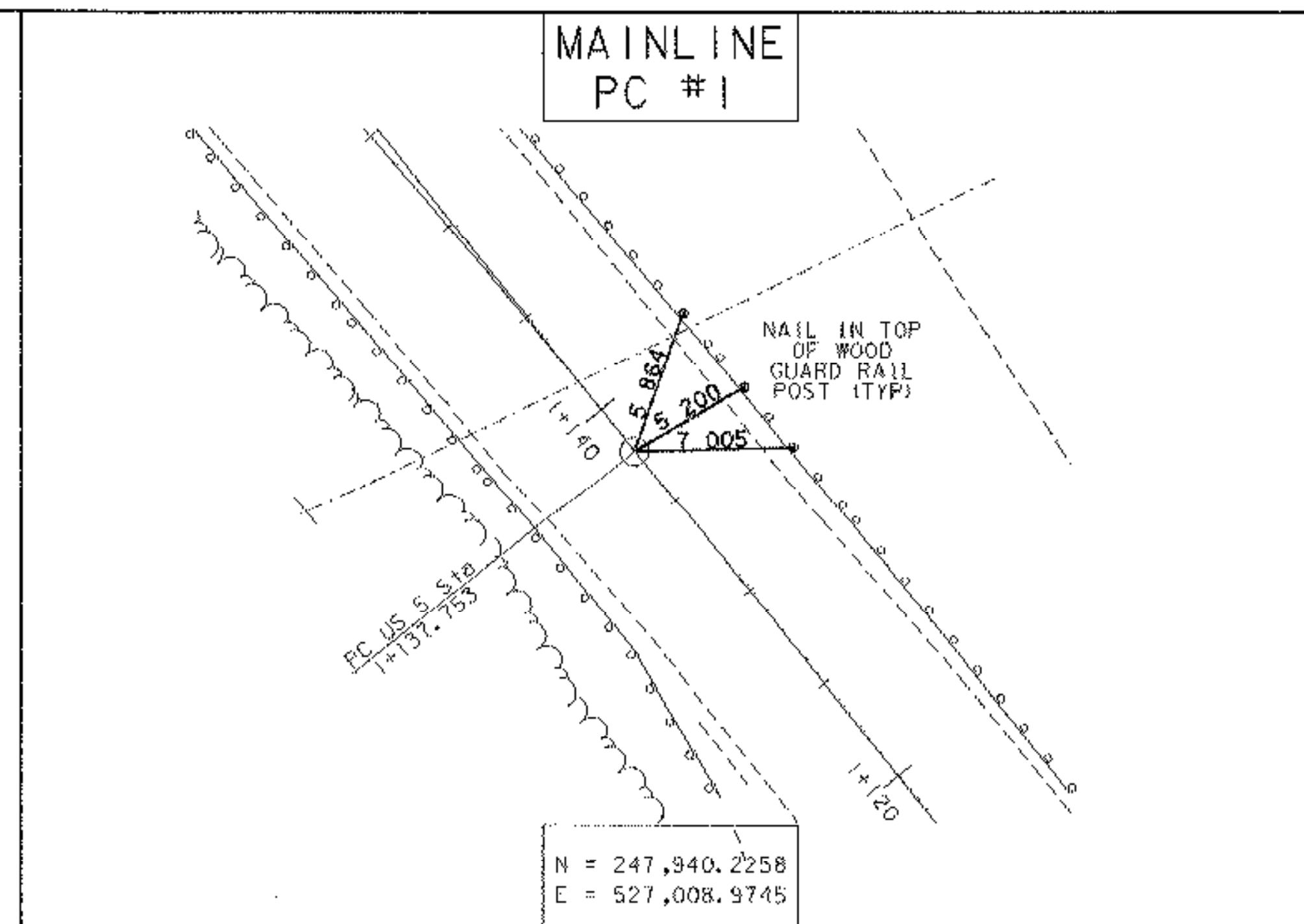
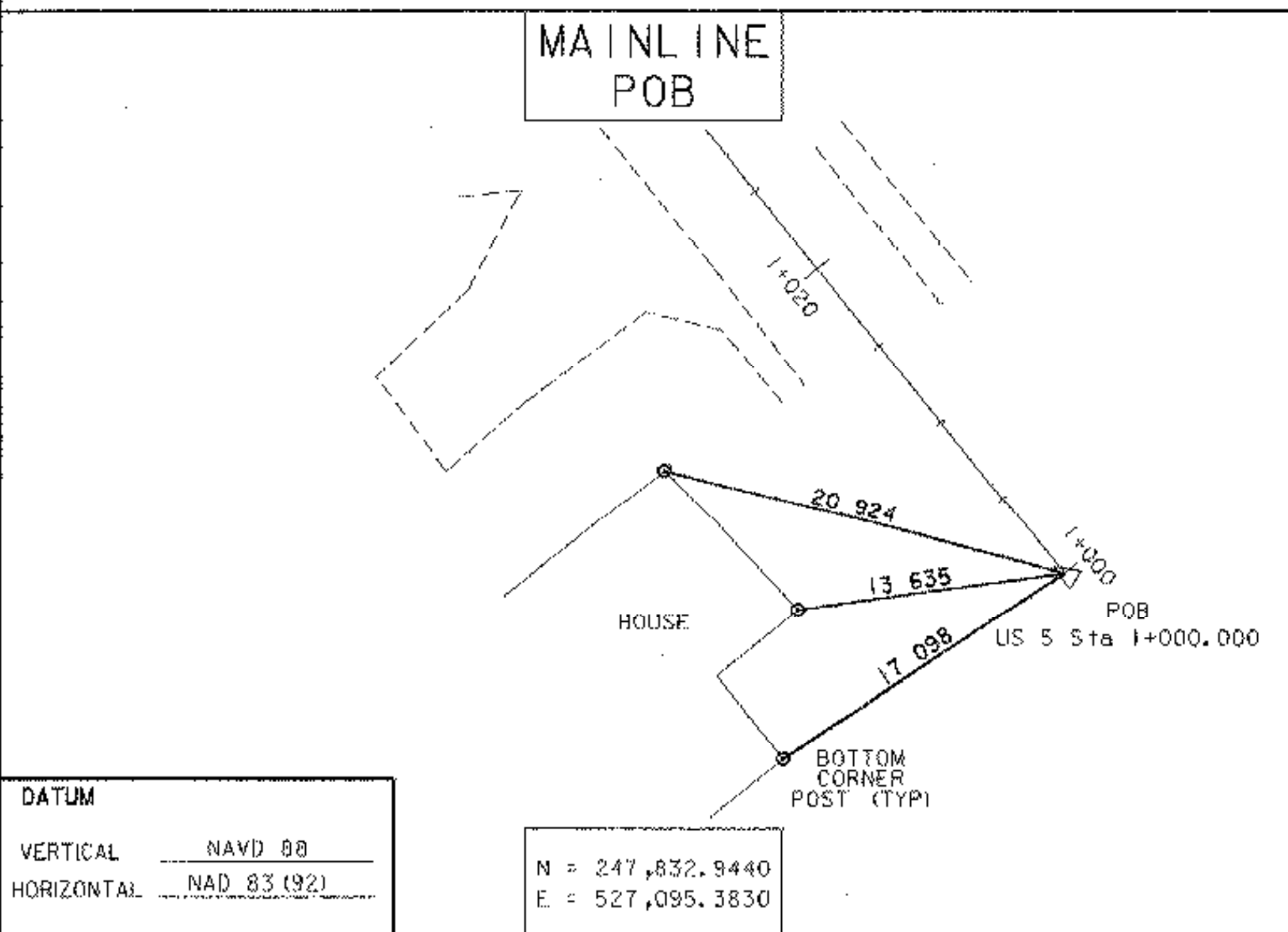
TRAVERSE TIE INFORMATION



N = 248,032.5830
E = 526,927.2044
Z = 303.2770

N = 248,307.1881
E = 526,713.2551
Z = 312.7130

NEW ALIGNMENT TIE INFORMATION



ARCHIVED
ON CADD

N = 248,002.5841
E = 526,943.7983

ALL TIES ARE SHOWN NOT TO SCALE

PROJECT: BARTON	PROJECT NO.: STP 0113 (58) S
DESIGN FILE NAME: 96c116/structures/sc116tie.dgn	PLOT DATE: 03-JAN-2002
IPARM FILE NAME: sc116tie.i	SURVEY DATE: 8/96, 5/99
SURVEYED BY: R. BULLOCK, R. GILMAN	DRAWN BY: P.G. JARVIS
SQUAD LEADER: C.P. WILLIAMS	SHEET: 7 OF 120
TIE SHEET	

DATUM
VERTICAL NAVD 88
HORIZONTAL NAD 83 (92)

N = 247,832.9440
E = 527,095.3830

N = 247,940.2258
E = 527,008.9745