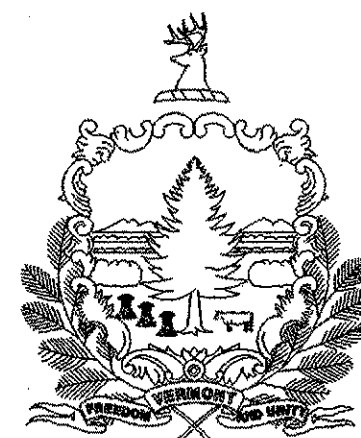


1. TITLE SHEET
2. PRELIMINARY INFORMATION SHEET (INDEX OF SHEETS)

# STATE OF VERMONT AGENCY OF TRANSPORTATION



## PROPOSED IMPROVEMENT BRIDGE PROJECT

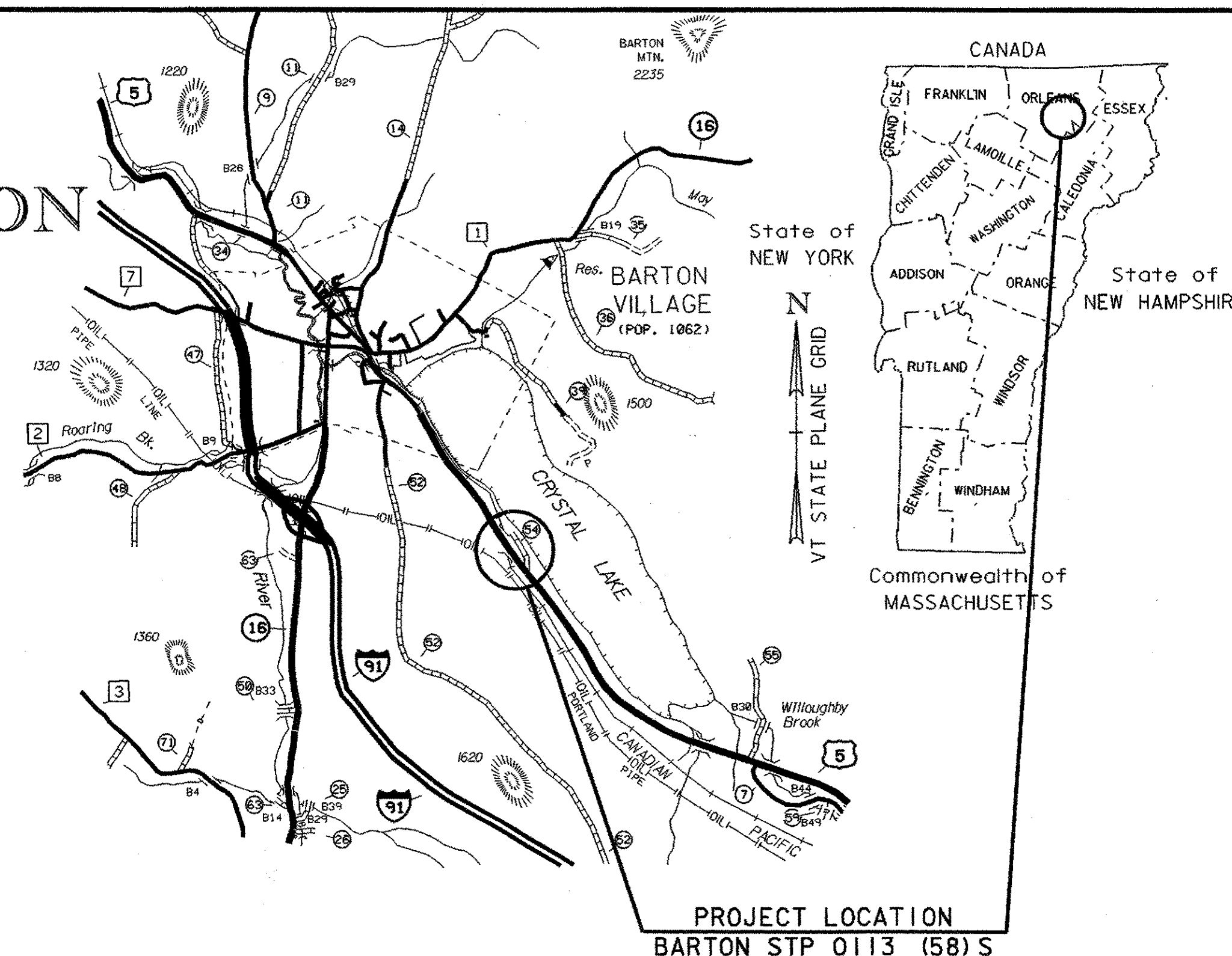
TOWN OF BARTON  
COUNTY OF ORLEANS

ROUTE NO : US ROUTE 5    BRIDGE NO : 161

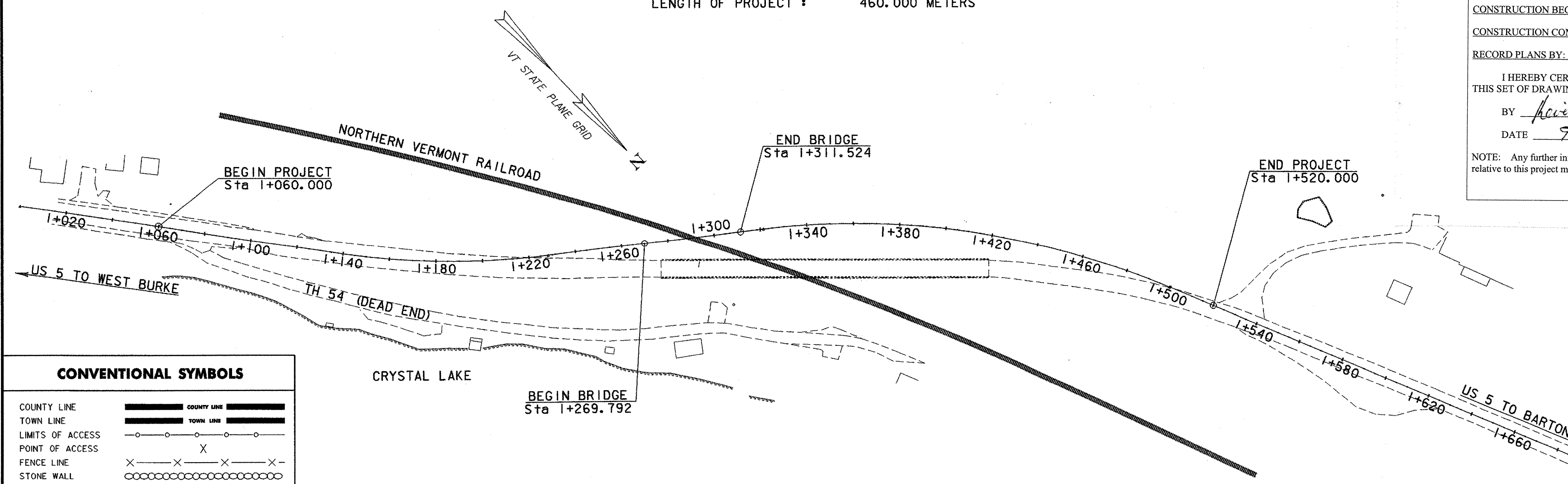
PROJECT LOCATION : On US 5, beginning 1.10 km from Barton Village line  
continuing toward Barton for 0.460 km.

PROJECT DESCRIPTION : Reconstruction of US 5 including removal of existing bridge  
over Northern Vermont Railroad and construction of a new Bridge.

LENGTH OF STRUCTURE :    41.732 METERS  
LENGTH OF ROADWAY :    418.268 METERS  
LENGTH OF PROJECT :    460.000 METERS



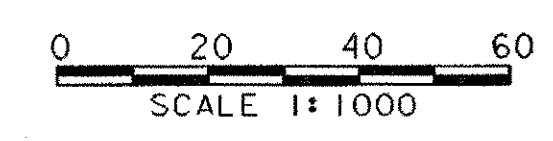
RECORD PLANS	
CONTRACTOR:	WINTerset - LYNDONVILLE
RESIDENT ENGINEER:	DAVE SARGENT
CONSTRUCTION BEGAN:	AUGUST 22, 2002
CONSTRUCTION COMPLETE:	SEPTEMBER 17, 2004
RECORD PLANS BY:	D. SARGENT & K. McCLURE
I HEREBY CERTIFY THAT ALL THE CONSTRUCTION REQUIRED BY THIS SET OF DRAWINGS HAS BEEN ACCOMPLISHED AS INDICATED HEREIN.	
BY:	<i>Kevin McClure</i> ASST. RESIDENT ENGINEER
DATE:	9/9/05
NOTE: Any further information concerning final quantities, amounts or other details relative to this project may be found at Central Files in the electronic archives.	



CONVENTIONAL SYMBOLS	
COUNTY LINE	
TOWN LINE	
LIMITS OF ACCESS	
POINT OF ACCESS	
FENCE LINE	
STONE WALL	
TRAVELED WAY	
RAILROAD	
SURVEY LINE	
CULVERT	
POWER POLE	
TELEPHONE POLE	
TREES	
CONTROL OF ACCESS	
PROPERTY LINE	
R.O.W. TAKING LINE	
SLOPE RIGHTS	
TOP OF CUT	
TOE OF SLOPE	

SURVEYED BY : R. BULLOCK, R. GILMAN  
SURVEYED DATE : AUGUST 1996, MAY 1999

DATUM  
VERTICAL    NAVD 88  
HORIZONTAL    NAD 83 (92)



THESE PLANS ARE SUBJECT TO SUCH ENGINEERING CHANGES AS MAY BE REQUIRED BY THE FEDERAL HIGHWAY ADMINISTRATION OR THE DIRECTOR OF PROJECT DEVELOPMENT.

CONSTRUCTION IS TO BE CARRIED ON IN ACCORDANCE WITH THESE PLANS AND THE STANDARD SPECIFICATIONS FOR CONSTRUCTION DATED 1995, AS APPROVED BY THE FEDERAL HIGHWAY ADMINISTRATION ON AUGUST 21, 1995 FOR USE ON THIS PROJECT, INCLUDING ALL SUBSEQUENT REVISIONS AND SUCH REVISED SPECIFICATIONS AND SPECIAL PROVISIONS AS ARE INCORPORATED IN THESE PLANS.

DIRECTOR OF PROJECT DEVELOPMENT	
APPROVED <i>[Signature]</i>	DATE 11/9/05
PROJECT MANAGER : C.P. WILLIAMS	
PROJECT NAME :	BARTON
PROJECT NUMBER :	AC STP 0113 (58) S
SHEET 1 OF 120 SHEETS	

Metric

UNLESS NOTED OTHERWISE  
STATIONS ARE IN KILOMETERS  
ELEVATIONS ARE IN METERS  
DIMENSIONS ARE IN MILLIMETERS