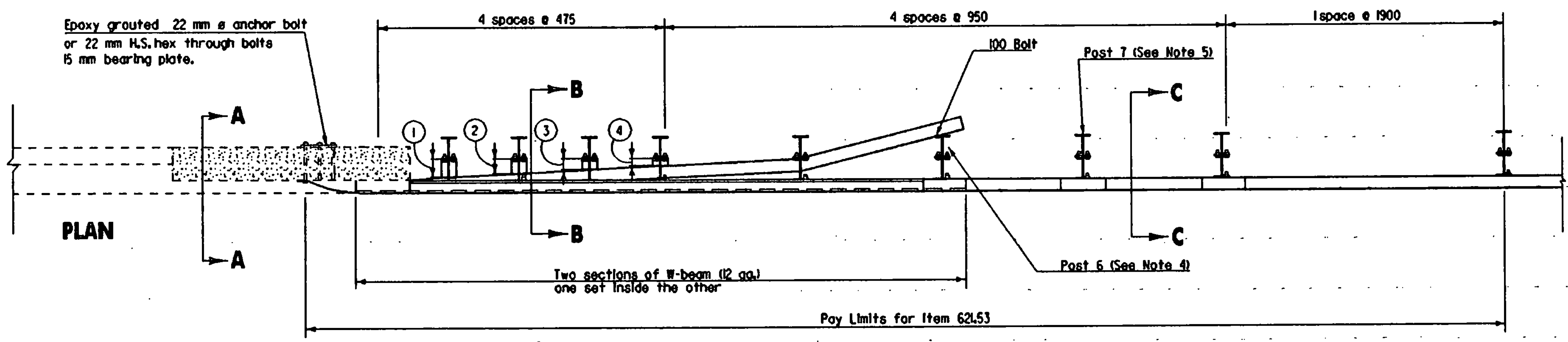
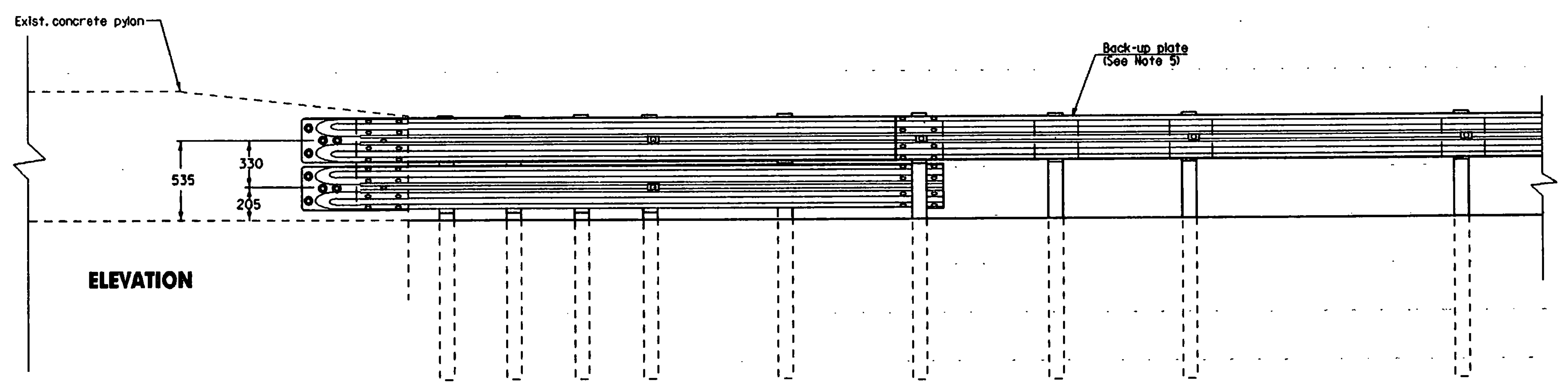


1. This guardrail transition is for connection to a vertical concrete bridge rail and should not be connected directly to a concrete safety shape.
2. Bottom beam blocks are offset drilled to sit squarely on the post flange. Blocks are attached with 15 mm carriage bolts.
3. The rubrail may be shop bent in the last 1 meter to facilitate installation.
4. Posts 1,2,3,4 and 6 require an additional hole to attach lower blocks and or lower beam.
5. At post 7, back-up plate bolted to block only.
6. Posts will be either 1.8 meters or 2.5 meters steel posts, as directed by the Engineer.



**BOTTOM BEAM
WOOD BLOCKS
1'-2" X 4 1/2"**

POST #	THICKNESS (mm)
①	125
②	100
③	75
④	50



Not To Scale

NOTE: ALL DIMENSIONS IN MILLIMETERS EXCEPT AS INDICATED

DATUM	_____
VERTICAL	_____
HORIZONTAL	_____

PROJECT: STAMFORD-READSBORO-		PROJECT NO.: STP 97HHS
DESIGN FILE NAME: /PAVE/96co20/pc020.dgn	PLOT DATE: 18-MAR-1997	
IPARM FILE NAME: pc020d16.1	SURVEY DATE: N/A	
SURVEYED BY: SLD	DRAWN BY: VAOT	
SQUAD LEADER: JAW	SHEET: 28 OF 28	

**TERMINAL CONNECTOR
FOR STEEL BEAM G.R.
W/STEEL POSTS**