

**REMOVAL OF EXISTING CURB**

VT 15 STA. 280+53 LT- TOWERS RD. STA. 10+59 LT  
 VT 15 STA. 281+21 RT- VT 15 STA. 282+15 RT  
 TOWERS RD. STA. 10+60 RT- VT 128 STA. 0+65 LT  
 TOWERS RD. STA. 10+75 LT- TOWERS RD. STA. 11+50 LT

**CONSTRUCT DRIVES**

VT 128 STA. 0+77 LT (24' PAVED)  
 VT 15 STA. 283+16 RT (26' PAVED)

**VT RTE. 15 CURVE DATA # 1**

$\Delta = 1^{\circ}59'37.91''$  LEFT  
 $D = 2717'30.59''$   
 $R = 2500.00$   
 $T = 43.50$   
 $L = 87.00$   
 $E = 0.38$

**TOWERS RD. CURVE DATA # 1**

$\Delta = 2^{\circ}36'02.25''$  LEFT  
 $D = 5^{\circ}43'46.48''$   
 $R = 1000.00$   
 $T = 22.70$   
 $L = 45.39$   
 $E = 0.26$

**BEGIN PROJECT**  
**ESSEX STPG SGNL(17)**  
**VT 15 STA. 279+50**  
**279+38**

**THINNING & TRIMMING**  
 VT 15 STA. 281+26 - 48' LT

**END PROJECT**  
**ESSEX STPG SGNL(17)**  
**TOWERS RD. STA. 11+50**

**END PROJECT**  
**ESSEX STPG SGNL(17)**  
**VT 128 STA. 1+50**

**END PROJECT**  
**ESSEX STPG SGNL(17)**  
**VT 15 STA. 283+10**  
**283+38**

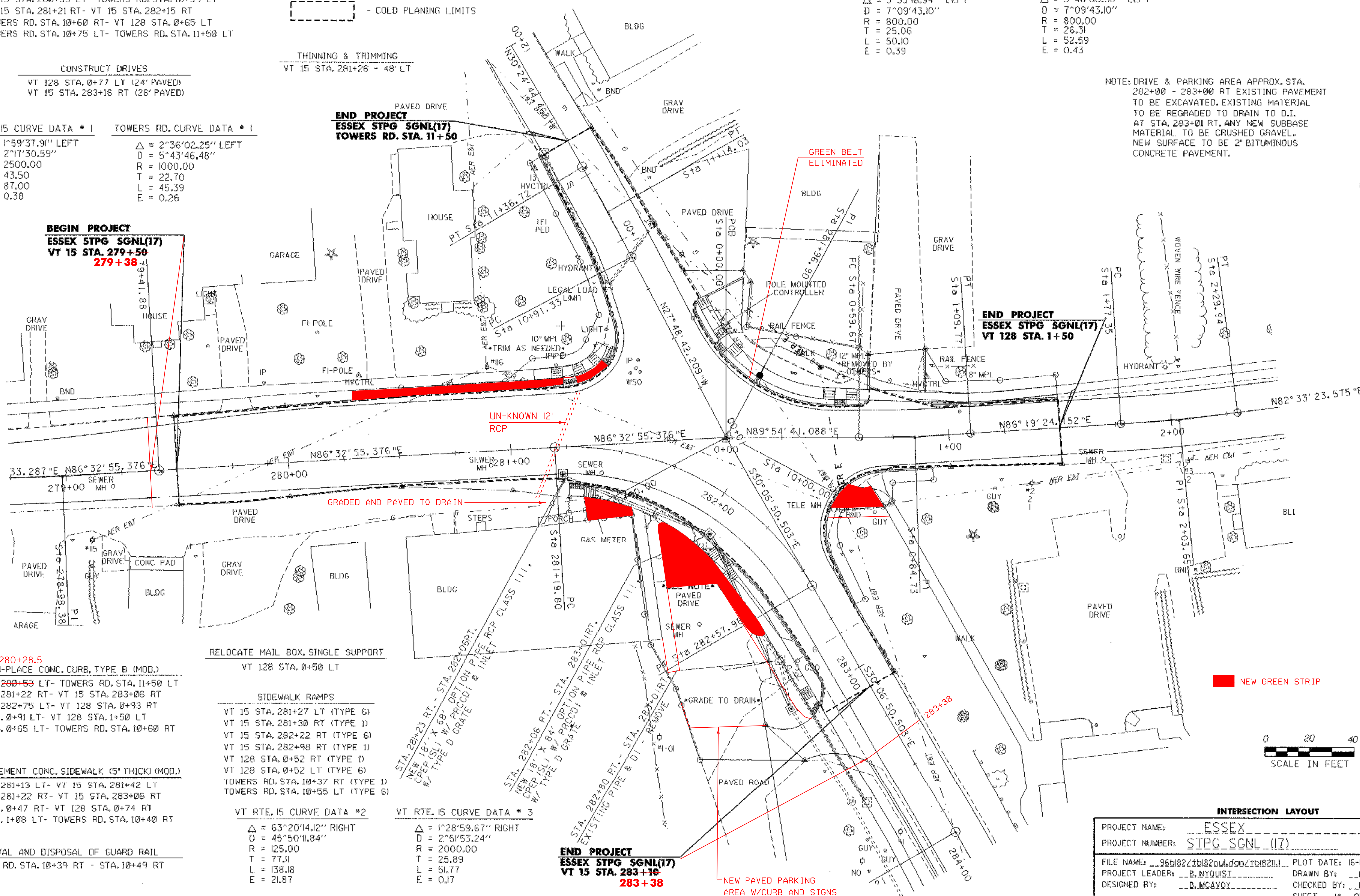
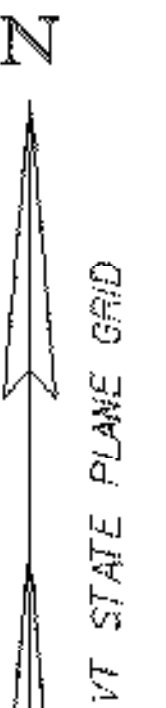
**VT RTE. 128 CURVE DATA # 1**

$\Delta = 3^{\circ}35'16.94''$  LEFT  
 $D = 7^{\circ}09'43.10''$   
 $R = 800.00$   
 $T = 25.06$   
 $L = 50.10$   
 $E = 0.39$

**VT RTE. 128 CURVE DATA # 3**

$\Delta = 3^{\circ}46'00.58''$  LEFT  
 $D = 7^{\circ}09'43.10''$   
 $R = 800.00$   
 $T = 26.31$   
 $L = 52.59$   
 $E = 0.43$

NOTE: DRIVE & PARKING AREA APPROX. STA. 282+00 - 283+00 RT EXISTING PAVEMENT TO BE EXCAVATED. EXISTING MATERIAL TO BE REGRADED TO DRAIN TO D.I. AT STA. 283+01 RT. ANY NEW SUBBASE MATERIAL TO BE CRUSHED GRAVEL. NEW SURFACE TO BE 2" BITUMINOUS CONCRETE PAVEMENT.



**280+28.5**  
 CAST-IN-PLACE CONC. CURB, TYPE B (MOD.)

VT 15 STA. 280+53 LT- TOWERS RD. STA. 11+50 LT  
 VT 15 STA. 281+22 RT- VT 15 STA. 283+06 RT  
 VT 15 STA. 282+75 LT- VT 128 STA. 0+93 RT  
 VT 128 STA. 0+91 LT- VT 128 STA. 1+50 LT  
 VT 128 STA. 0+65 LT- TOWERS RD. STA. 10+60 RT

PORTLAND CEMENT CONC. SIDEWALK (5" THICK) (MOD.)

VT 15 STA. 281+13 LT- VT 15 STA. 281+42 LT  
 VT 15 STA. 281+22 RT- VT 15 STA. 283+06 RT  
 VT 128 STA. 0+47 RT- VT 128 STA. 0+74 RT  
 VT 128 STA. 1+08 LT- TOWERS RD. STA. 10+40 RT

REMOVAL AND DISPOSAL OF GUARD RAIL

TOWERS RD. STA. 10+39 RT - STA. 10+49 RT

RELOCATE MAIL BOX, SINGLE SUPPORT  
 VT 128 STA. 0+50 LT

**SIDEWALK RAMPS**

VT 15 STA. 281+27 LT (TYPE 6)  
 VT 15 STA. 281+30 RT (TYPE 1)  
 VT 15 STA. 282+22 RT (TYPE 6)  
 VT 15 STA. 282+98 RT (TYPE 1)  
 VT 128 STA. 0+52 RT (TYPE 1)  
 VT 128 STA. 0+52 LT (TYPE 6)  
 TOWERS RD. STA. 10+37 RT (TYPE 1)  
 TOWERS RD. STA. 10+55 LT (TYPE 6)

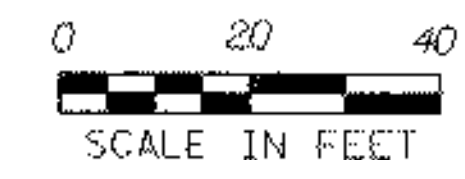
**VT RTE. 15 CURVE DATA # 2**

$\Delta = 63^{\circ}20'14.12''$  RIGHT  
 $D = 45^{\circ}50'11.84''$   
 $R = 125.00$   
 $T = 77.11$   
 $L = 138.18$   
 $E = 21.87$

**VT RTE. 15 CURVE DATA # 3**

$\Delta = 1^{\circ}28'59.67''$  RIGHT  
 $D = 2^{\circ}51'53.24''$   
 $R = 2000.00$   
 $T = 25.89$   
 $L = 51.77$   
 $E = 0.17$

**NEW GREEN STRIP**



**INTERSECTION LAYOUT**

PROJECT NAME: ESSEX  
 PROJECT NUMBER: STPG SGNL (17)  
 FILE NAME: 96b18221b18200d9021b18211 PLOT DATE: 16-NOV-2006  
 PROJECT LEADER: B. NYQUIST DRAWN BY: B. MCAVOY  
 DESIGNED BY: B. MCAVOY CHECKED BY: B. NYQUIST  
 SHEET 14 OF 29