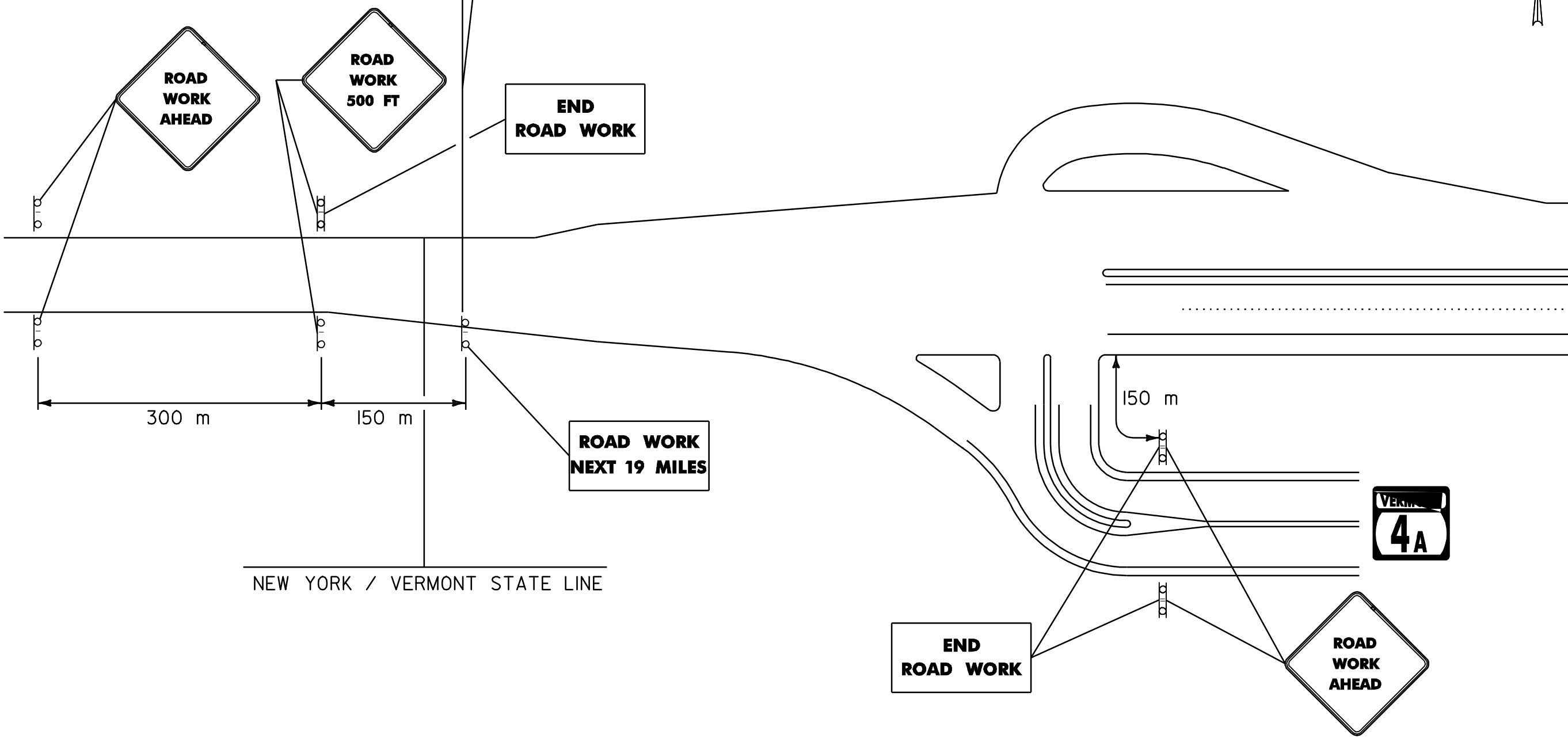


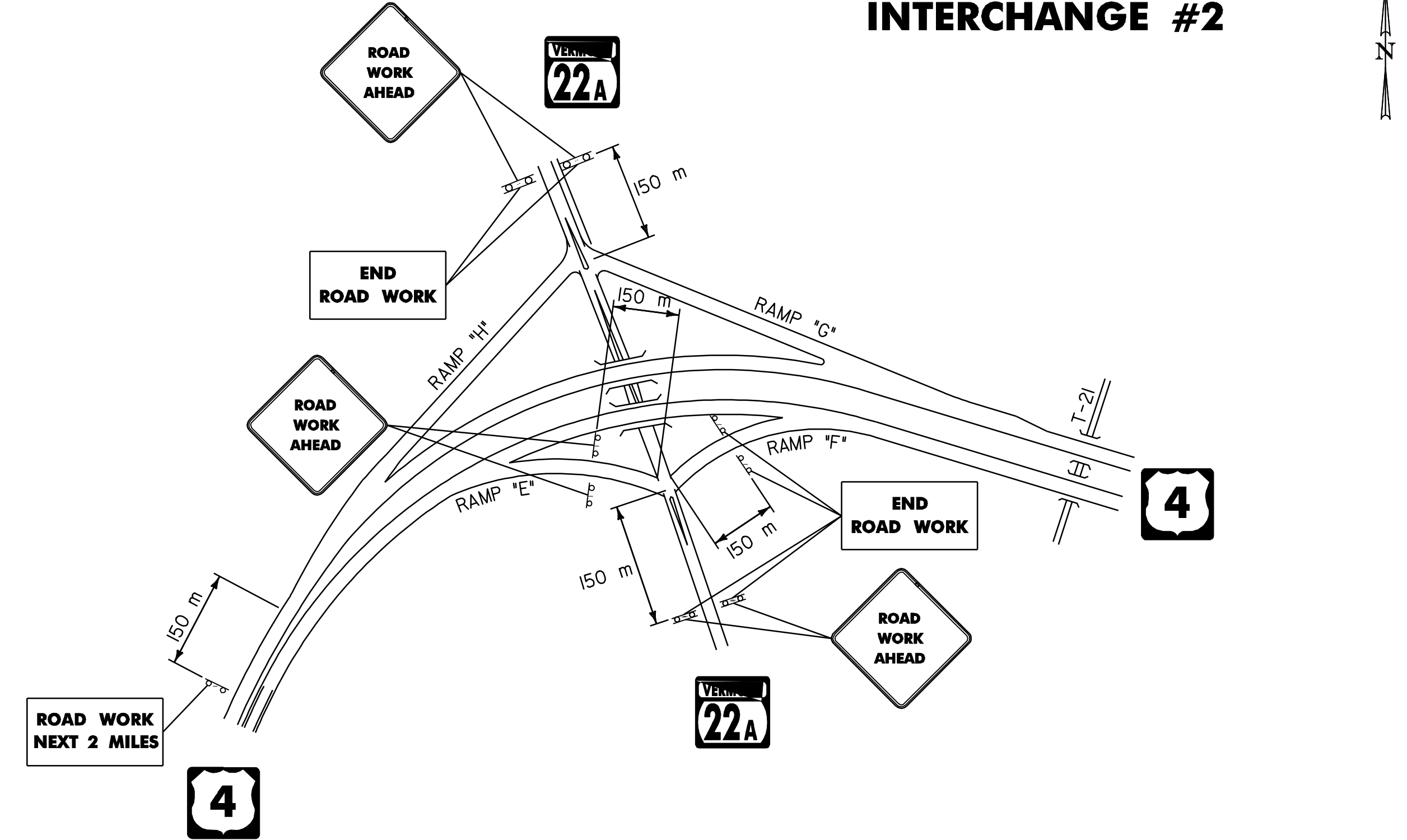
CONSTRUCTION APPROACH SIGNING DETAIL - INTERCHANGES

U.S. ROUTE 4
MM 0.010 = STA. 0+016.093
END NH 9727(1)S

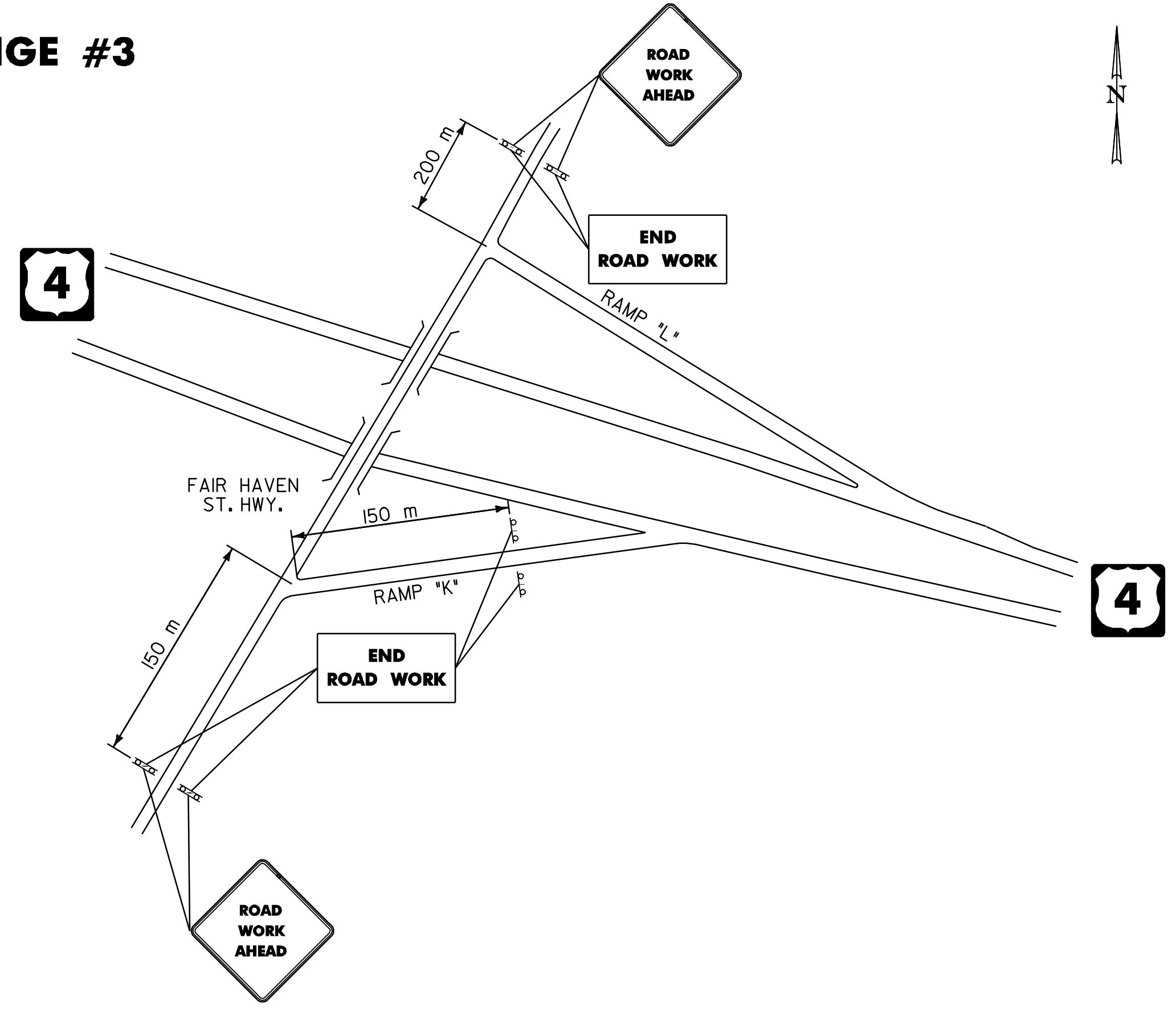
INTERCHANGE #1



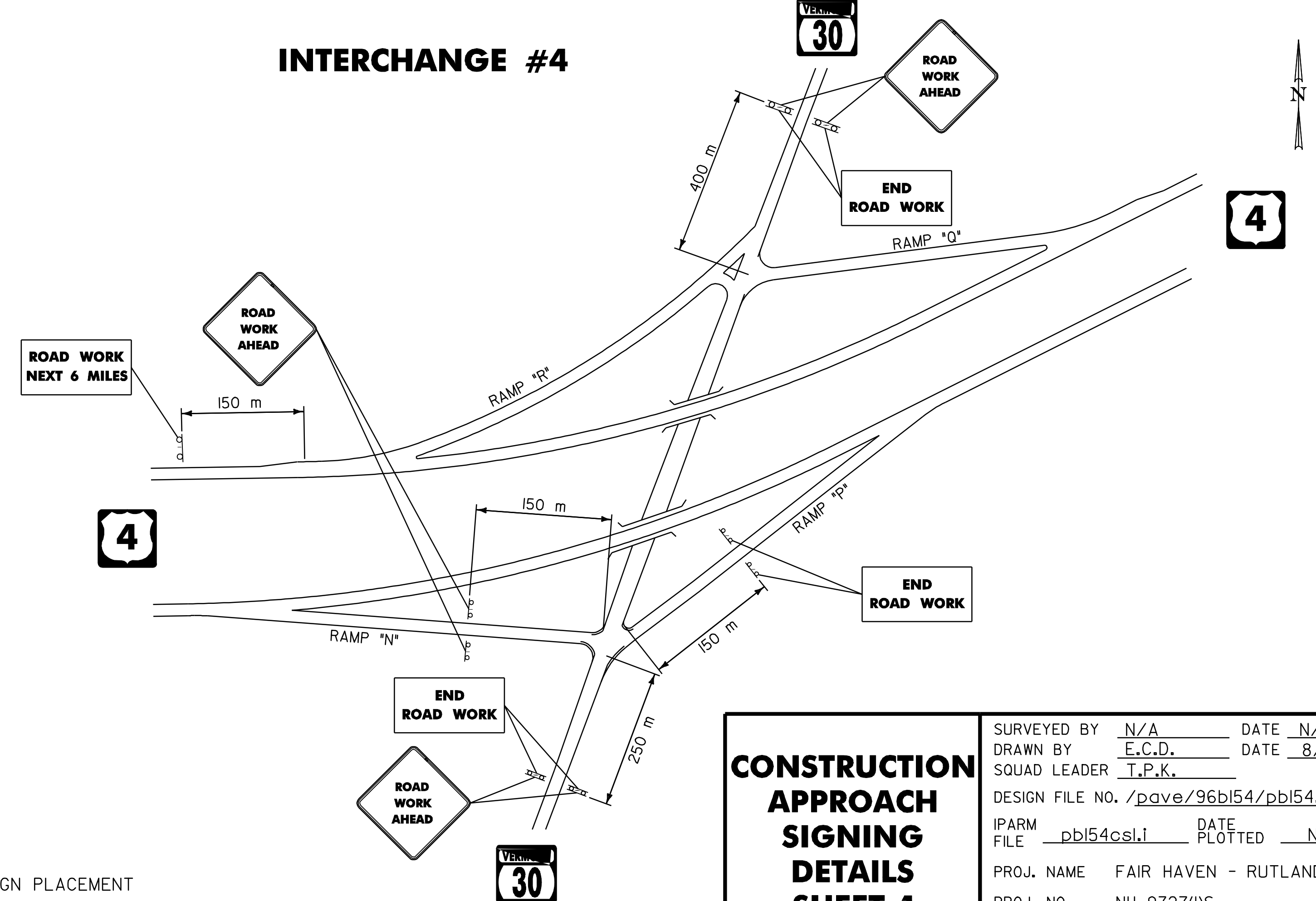
INTERCHANGE #2



INTERCHANGE #3



INTERCHANGE #4



NOTE:
SEE STANDARD E-100M FOR ADDITIONAL SIGN PLACEMENT

DATUM	
VERTICAL	N/A
HORIZONTAL	N/A

CONSTRUCTION APPROACH SIGNING DETAILS SHEET 1	SURVEYED BY	N/A	DATE	N/A
	DRAWN BY	E.C.D.	DATE	8/98
	SQUAD LEADER	T.P.K.		
	DESIGN FILE NO.	/pave/96bl54/pbl54.dgn		
	IPARM FILE	pbl54csl.i	DATE PLOTTED	N/A
PROJ. NAME	FAIR HAVEN - RUTLAND			
PROJ. NO.	NH 9727(1)S			
SHEET 118 OF 119	SHEETS			