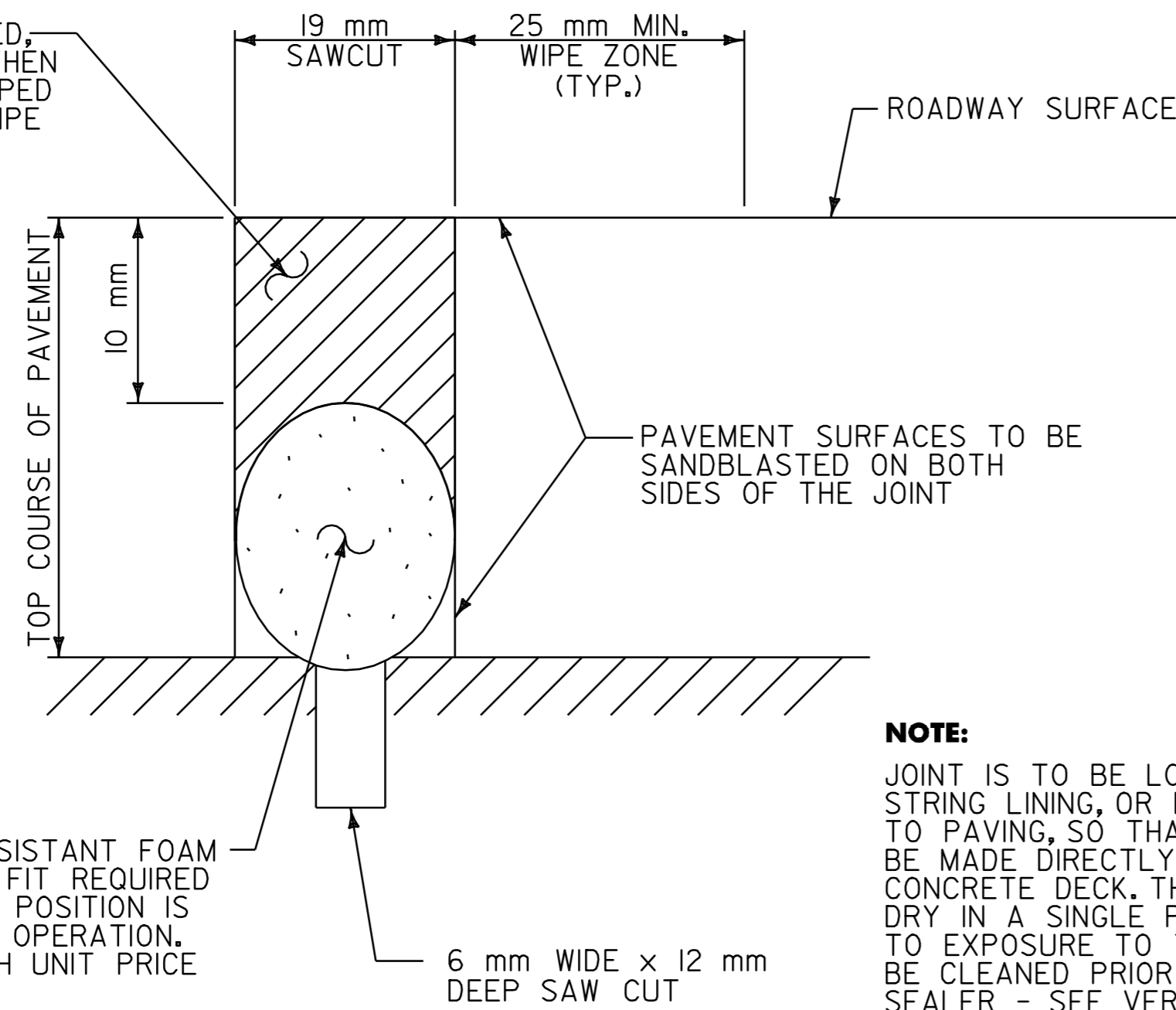


JOINT SEALER, HOT OR COLD Poured, SHALL BE SLIGHTLY OVER FILLED THEN WIPED FLUSH WITH A "V" OR "U" SHAPED SQUEEGEE TO PROVIDE A 25 mm WIPE ZONE ON EACH SIDE OF THE JOINT



22 mm DIAMETER HEAT RESISTANT FOAM BACKER ROD. COMPRESSION FIT REQUIRED TO ENSURE THAT THE ROD POSITION IS MAINTAINED DURING FILLING OPERATION. COST TO BE INCLUDED WITH UNIT PRICE BID FOR JOINT SEALER.

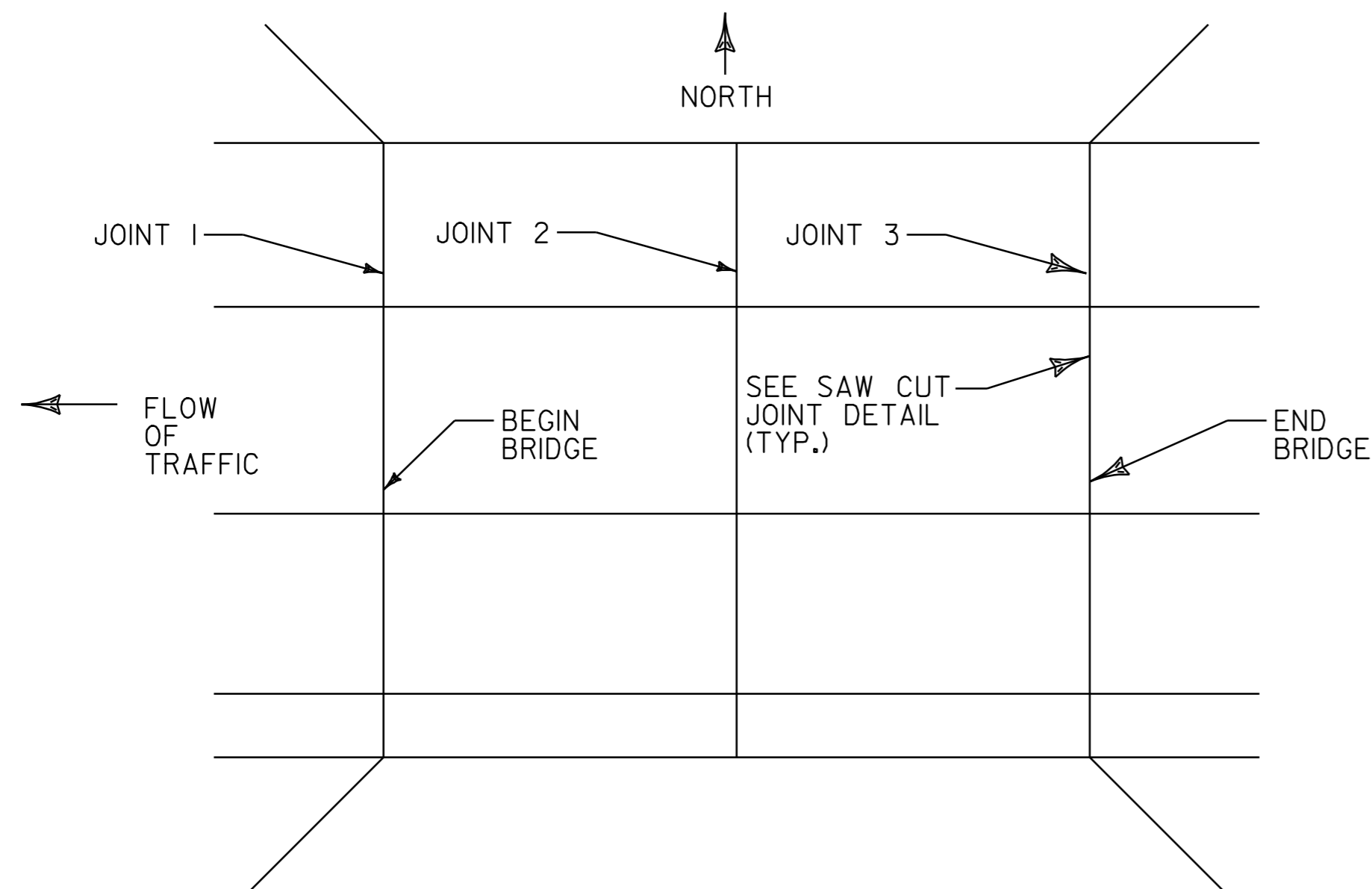
**NOTE:**  
JOINT IS TO BE LOCATED ACCURATELY BY STRING LINING, OR BY OTHER MEANS, PRIOR TO PAVING, SO THAT THE SAW CUTS WILL BE MADE DIRECTLY OVER THE END OF THE CONCRETE DECK. THE JOINT SHALL BE CUT DRY IN A SINGLE PASS AND BE SEALED PRIOR TO EXPOSURE TO TRAFFIC. THE JOINT SHALL BE CLEANED PRIOR TO APPLYING THE JOINT SEALER - SEE VERMONT SPECIFICATION 524.

### SAW CUT JOINT DETAIL (SEE NOTE)

N.T.S

**NOTE:**  
JOINT SEALER, HOT Poured, OR JOINT SEALER, COLD Poured, SHALL BE INSTALLED ONLY AT BRIDGE EXPANSION JOINTS ON ANY BRIDGE GREATER THAN 9 m IN LENGTH AS DIRECTED BY THE RESIDENT ENGINEER.

### JOINT NUMBERING SCHEMATIC



**NOTE:**

1. ALL WORK COMPLETED TO THE MANUFACTURER'S RECOMMENDATIONS SHALL BE PAID FOR UNDER ITEM 524.11 OR 524.13.
2. ALL SURFACES WITHIN THE JOINT SYSTEM SHALL BE BRUSHED-BLASTED OR BLOWN CLEAN WITH A 1650°C HOT COMPRESSED AIR LANCE PRIOR TO TACKING SURFACES WITH THE LIQUID BINDER.
3. THE CONTRACTOR SHALL PROVIDE THE RESIDENT ENGINEER WITH A DETAIL OF THE PREFERRED MANUFACTURER'S SAW CUT JOINT BEFORE ANY JOINT REHABILITATION WORK MAY BEGIN.

### BRIDGE JOINTS TO BE REPAIRED

BR 3-W - STA. 1+111.000	JOINT 1	13.0 m	LENGTH
BR 3-W - STA. 1+185.000	JOINT 3	13.1 m	LENGTH
BR 5-W - STA. 2+696.500	JOINT 1	11.6 m	LENGTH
BR 8-W - STA. 6+651.700	JOINT 2	11.2 m	LENGTH
BR 8-W - STA. 6+701.300	JOINT 3	11.2 m	LENGTH
BR 10-W - STA. 8+799.500	JOINT 1	11.2 m	LENGTH
BR 13-W - STA. 20+619.000	JOINT 1	9.1 m	LENGTH
BR 13-W - STA. 20+619.000	JOINT 6	9.1 m	LENGTH
BR 14-W - STA. 21+089.000	JOINT 1	14.5 m	LENGTH
BR 15-W - STA. 23+552.000	JOINT 1	11.7 m	LENGTH
BR 15-W - STA. 23+582.500	JOINT 3	11.7 m	LENGTH
BR 16-W - STA. 23+942.700	JOINT 1	11.2 m	LENGTH
BR 16-W - STA. 23+999.300	JOINT 3	11.2 m	LENGTH
BR 19-W - STA. 28+305.200	JOINT 2	11.1 m	LENGTH
BR 19-W - STA. 28+335.100	JOINT 3	11.1 m	LENGTH
BR 20-W - STA. 28+700.000	JOINT 2	11.2 m	LENGTH
BR 20-W - STA. 28+779.000	JOINT 3	11.2 m	LENGTH

### BRIDGE JOINT DETAIL SHEET

SURVEYED BY	N/A	DATE	N/A
DRAWN BY	E.C.D.	DATE	8/98
SQUAD LEADER	T.P.K.		
DESIGN FILE NO.	/pave/96b154/pbl54.dgn		
IPARM FILE	pbl54+41.i	DATE PLOTTED	N/A
PROJ. NAME	FAIR HAVEN - RUTLAND		
PROJ. NO.	NH 9727(1)S		
SHEET	116 OF 119	SHEETS	

DATUM	
VERTICAL	N/A
HORIZONTAL	N/A