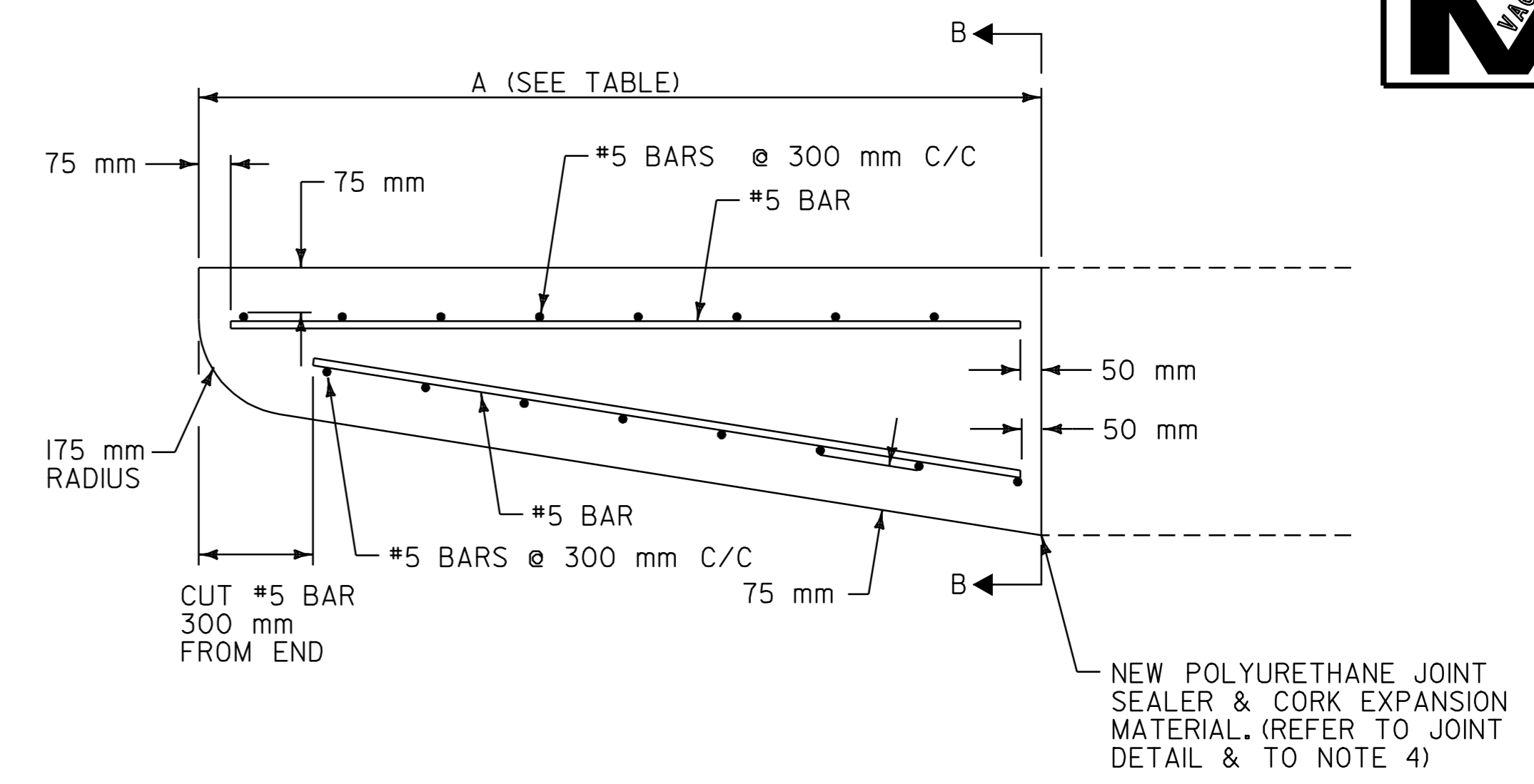
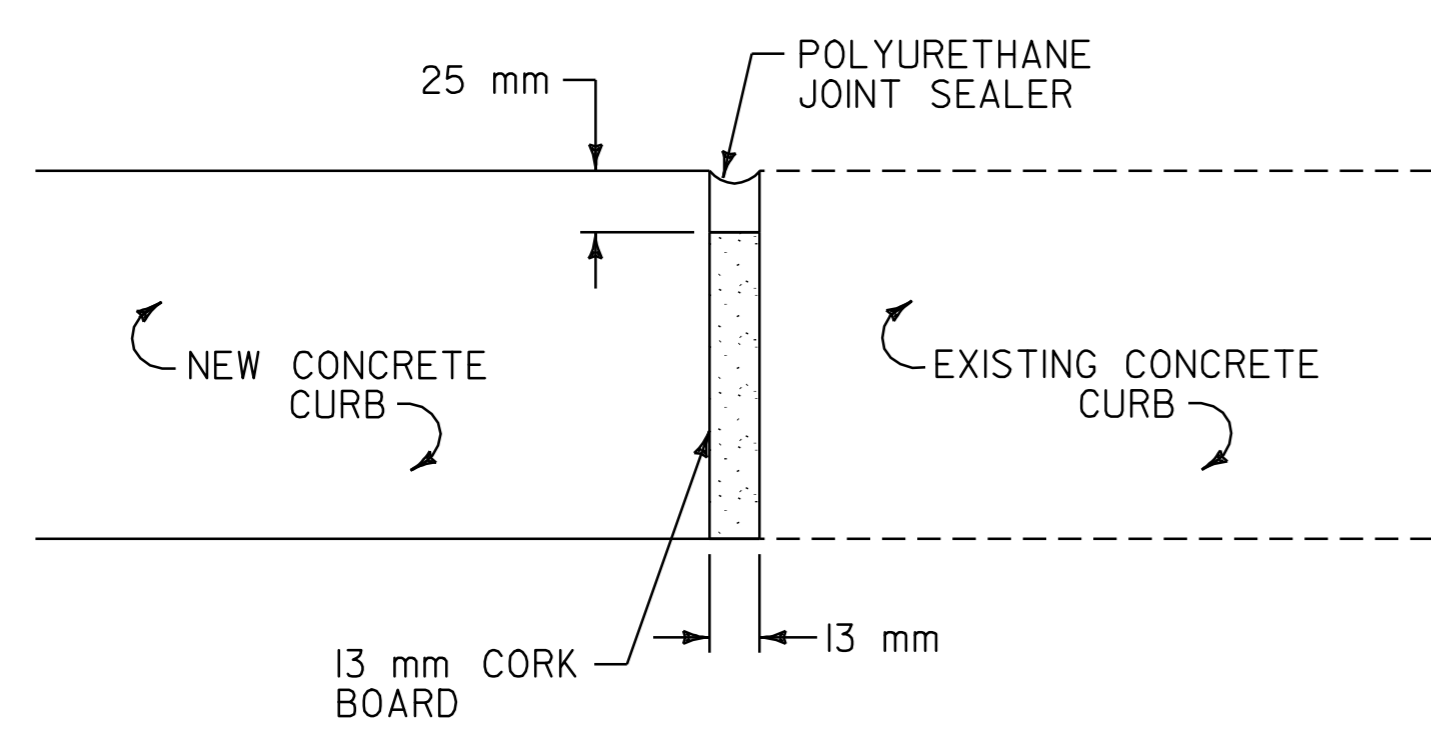


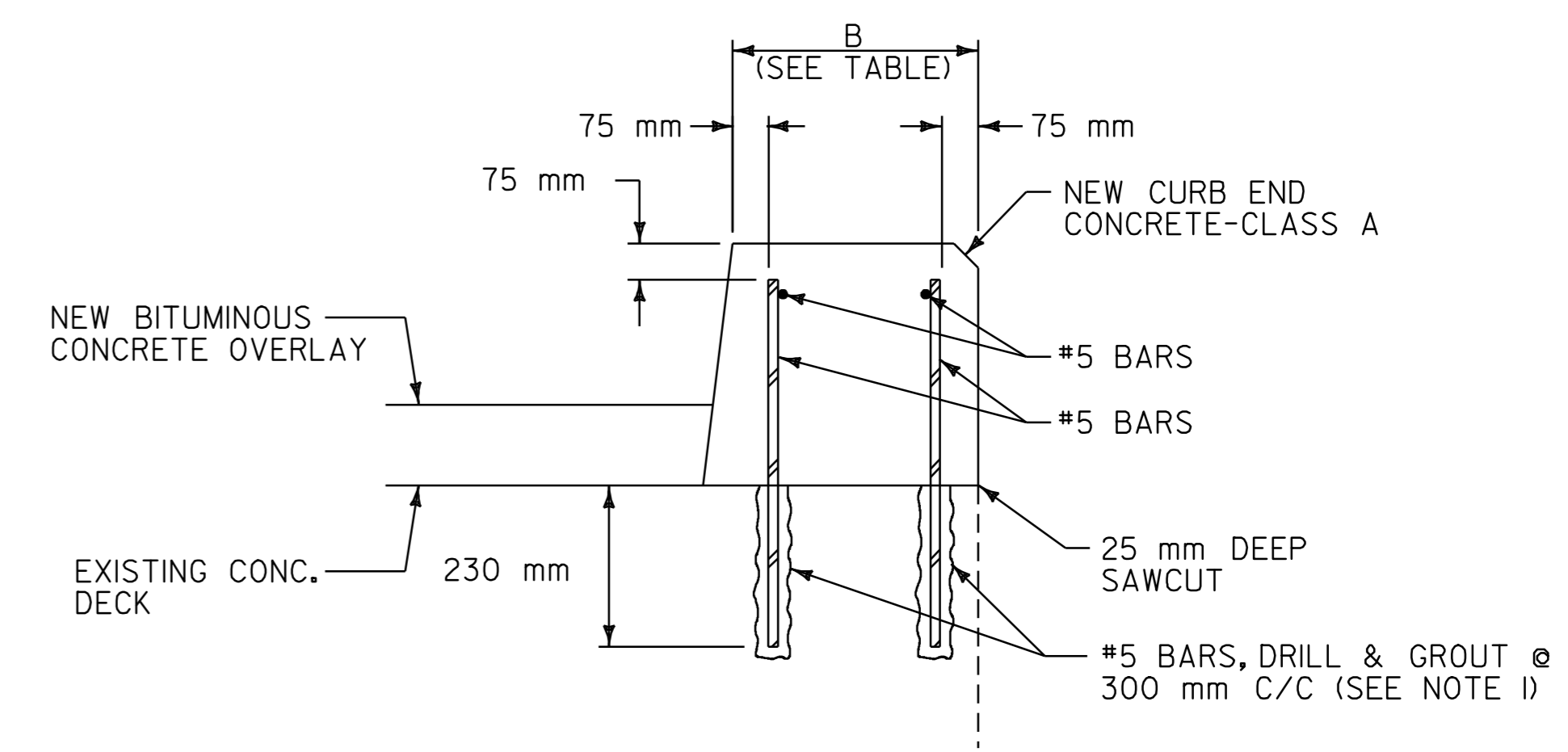
NEW CURB END TREATMENT ELEVATION VIEW
N.T.S



NEW CURB END TREATMENT PLAN VIEW
N.T.S



JOINT DETAIL (SEE NOTE 4)
N.T.S



SECTION B-B
N.T.S

BRIDGE CURB DIMENSION TABLE (mm)

BRIDGE	CURB LOCATION	A	B	C
BR 3-W	STA. 1+103.000, RT	3700	597	292
	STA. 1+105.000, LT	3700	597	267
	STA. 1+191.000, LT	3700	584	318
	STA. 1+192.000, RT	3700	597	254
BR 5-W	STA. 2+683.000, LT	2540	584	305
	STA. 2+689.000, RT	2540	584	279
	STA. 2+752.000, RT	2438	597	292
BR 8-W	STA. 2+752.000, LT	2515	584	279
	STA. 6+605.000, RT	3700	597	229
	STA. 6+778.000, LT	3700	597	216
BR 10-W	STA. 6+778.000, RT	3700	584	229
	STA. 8+780.000, RT	3700	610	267
	STA. 8+790.000, LT	3700	622	279
BR 13-W	STA. 8+857.000, RT	3700	622	267
	STA. 8+868.000, LT	3700	597	305
	STA. 20+893.000, RT	3700	787	216
	STA. 20+906.000, LT	2337	800	279
BR 14-W	STA. 21+007.000, RT	2413	787	216
	STA. 21+015.000, LT	3700	787	457
	STA. 21+080.000, RT	3700	787	305
	STA. 21+092.000, LT	2299	787	216
BR 15-W	STA. 21+193.000, RT	3700	749	260
	STA. 21+225.000, LT	3700	775	178
	STA. 23+545.000, LT	3700	775	178
	STA. 23+550.000, RT	3700	762	203
	STA. 23+590.000, LT	3700	762	178
	STA. 23+592.000, RT	3700	762	191

NOTES

- LOCATION OF EXISTING U-BARS IS NOT KNOWN. DRILL AND GROUT #5 BAR DOWELS AS SHOWN IN END TREATMENT DETAILS. WHEN DIRECTED BY THE RESIDENT ENGINEER, ANY EXISTING U-BARS SHALL BE REMOVED AND SUBSEQUENTLY REPLACED BY #5 BAR DOWELS AS REQUIRED TO PROVIDE THE NECESSARY VERTICAL REINFORCEMENT.
- WHEN POURING NEW CONCRETE CURBS, THE CONCRETE SHALL BE POURED BACK TO THE ORIGINAL CURB LINE AND GRADE.
- FOR EACH BRIDGE, THE REMOVAL OF GRANITE AND CONCRETE CURBING TO THE LIMITS SHOWN WILL BE PAID FOR AS ONE EACH UNDER THE ITEM 529.20, "PARTIAL REMOVAL OF STRUCTURE". THE RUBBLE CREATED BY THE REMOVAL SHALL NOT BE LEFT AT THE BRIDGE SITE BUT SHALL BE DISPOSED OF PROPERLY, AS DIRECTED BY THE RESIDENT ENGINEER.
- POLYURETHANE JOINT SEALER AND CORK EXPANSION MATERIAL SHALL BE USED IF NEW CONCRETE CURB BEGINS AT AN EXISTING BRIDGE JOINT. IF NO PAY ITEM APPEARS FOR THE JOINT SEALER OR THE EXPANSION MATERIAL, PAYMENT FOR BOTH WILL BE CONSIDERED SUBSIDIARY TO ITEM 501.22, "CONCRETE-CLASS A".

DATUM	
VERTICAL	N/A
HORIZONTAL	N/A

BRIDGE CURB DETAIL SHEET

SURVEYED BY	N/A	DATE	N/A
DRAWN BY	E.C.D.	DATE	8/98
SQUAD LEADER	T.P.K.		
DESIGN FILE NO.	/pave/96b154/pbl54.dgn		
IPARM FILE	pbl54+40.i	DATE PLOTTED	N/A
PROJ. NAME	FAIR HAVEN - RUTLAND		
PROJ. NO.	NH 9727(1)S		
SHEET	115 OF 119	SHEETS	