

NOTE: SEE BAY ROAD SH. 1 FOR CONT. SOUTHWEST

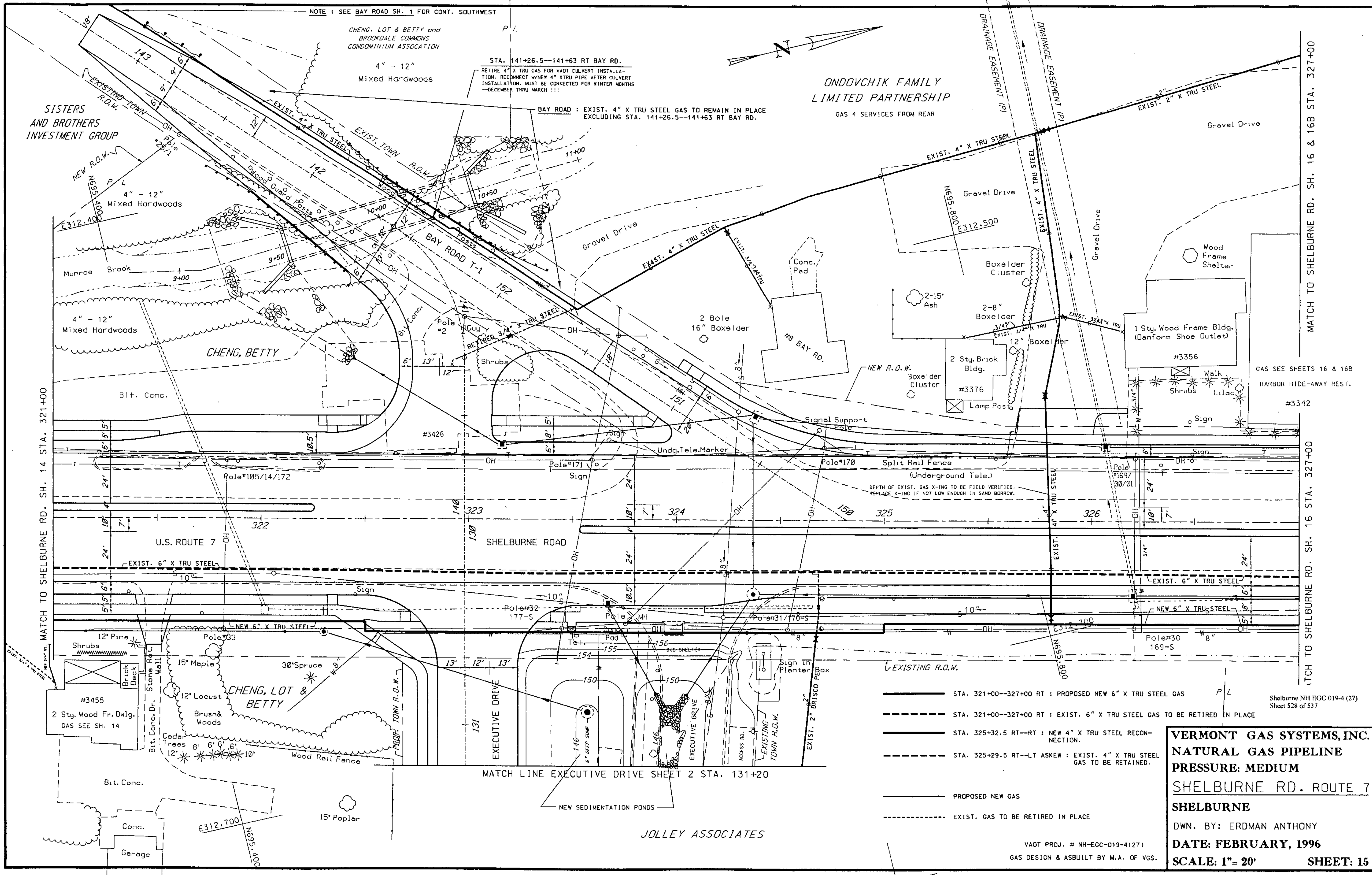
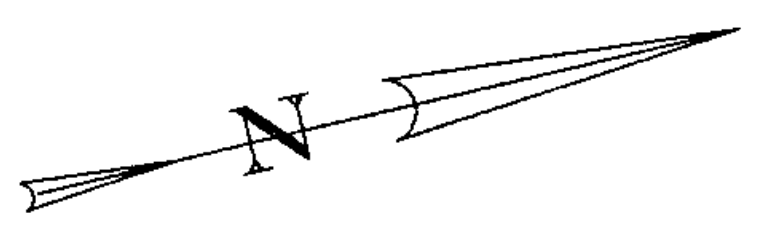
CHENG, LOT & BETTY and BROOKDALE COMMONS CONDOMINIUM ASSOCIATION

STA. 141+26.5--141+63 RT BAY RD. RETIRE 4" X TRU GAS FOR VAOT CULVERT INSTALLATION. RECONNECT W/NEW 4" XTRU PIPE AFTER CULVERT INSTALLATION. MUST BE CONNECTED FOR WINTER MONTHS --DECEMBER THRU MARCH !!!

BAY ROAD: EXIST. 4" X TRU STEEL GAS TO REMAIN IN PLACE EXCLUDING STA. 141+26.5--141+63 RT BAY RD.

ONDQVCHIK FAMILY LIMITED PARTNERSHIP

GAS 4 SERVICES FROM REAR



MATCH TO SHELburne RD. SH. 14 STA. 321+00

MATCH TO SHELburne RD. SH. 16 & 16B STA. 327+00

MATCH TO SHELburne RD. SH. 16 STA. 327+00

- STA. 321+00--327+00 RT : PROPOSED NEW 6" X TRU STEEL GAS
- - - STA. 321+00--327+00 RT : EXIST. 6" X TRU STEEL GAS TO BE RETIRED IN PLACE
- STA. 325+32.5 RT--RT : NEW 4" X TRU STEEL RECONNECTION.
- - - STA. 325+29.5 RT--LT ASKEW : EXIST. 4" X TRU STEEL GAS TO BE RETAINED.
- PROPOSED NEW GAS
- - - EXIST. GAS TO BE RETIRED IN PLACE

**VERMONT GAS SYSTEMS, INC.**  
**NATURAL GAS PIPELINE**  
**PRESSURE: MEDIUM**  
**SHELburne RD. ROUTE 7**  
**SHELburne**  
 DWN. BY: ERDMAN ANTHONY  
 DATE: FEBRUARY, 1996  
 SCALE: 1" = 20'  
 SHEET: 15

VAOT PROJ. # NH-EGC-019-4(27)  
GAS DESIGN & ASBUILT BY M.A. OF VGS.

JOLLEY ASSOCIATES

MATCH LINE EXECUTIVE DRIVE SHEET 2 STA. 131+20

Shelburne NH EGC 019-4 (27)  
Sheet 528 of 537