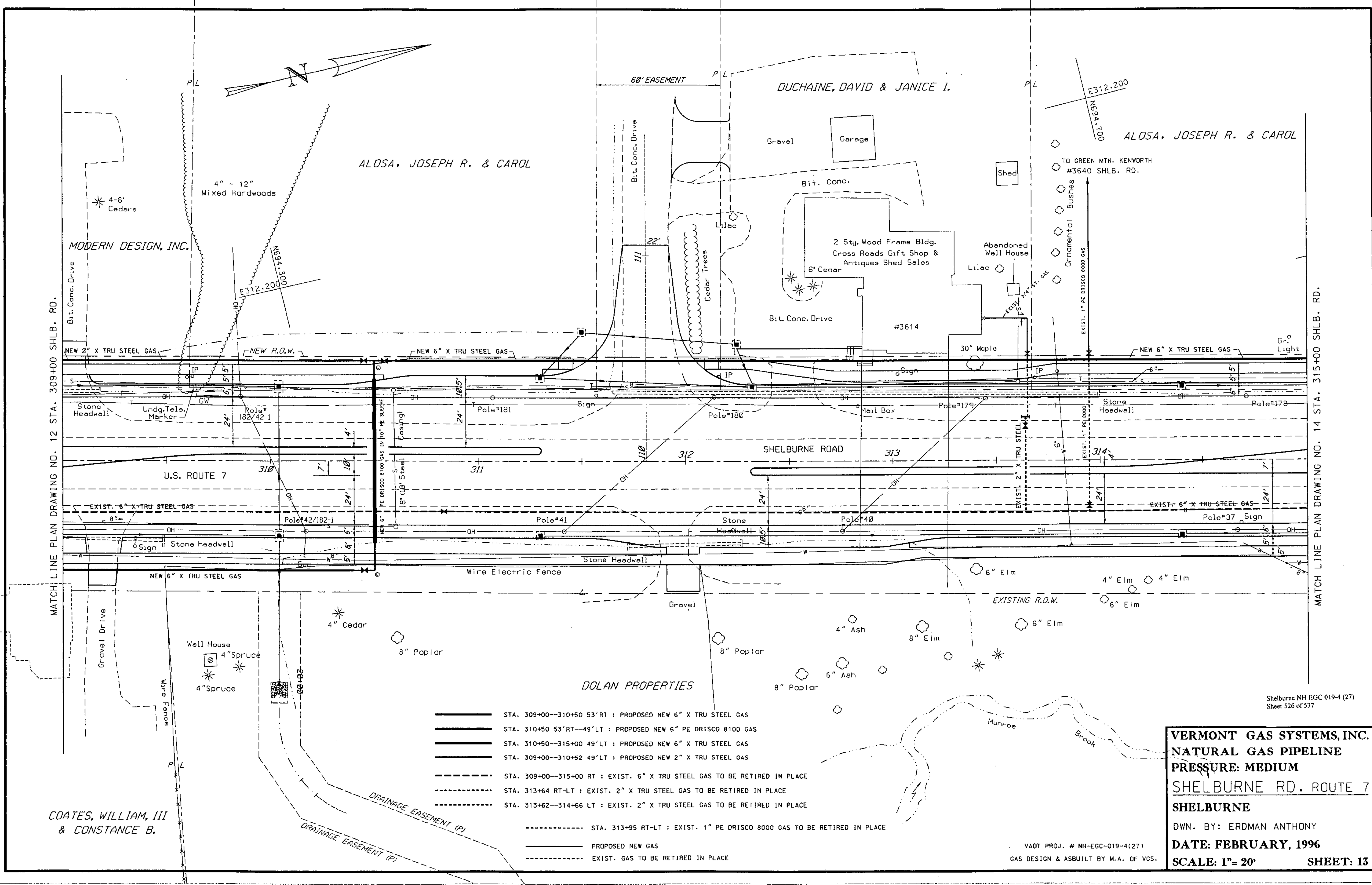


MATCH LINE PLAN DRAWING NO. 12 STA. 309+00 SHLB. RD.

MATCH LINE PLAN DRAWING NO. 14 STA. 315+00 SHLB. RD.



- STA. 309+00—310+50 53' RT : PROPOSED NEW 6" X TRU STEEL GAS
- STA. 310+50 53' RT—49' LT : PROPOSED NEW 6" PE DRISCO 8100 GAS
- STA. 310+50—315+00 49' LT : PROPOSED NEW 6" X TRU STEEL GAS
- STA. 309+00—310+52 49' LT : PROPOSED NEW 2" X TRU STEEL GAS
- STA. 309+00—315+00 RT : EXIST. 6" X TRU STEEL GAS TO BE RETIRED IN PLACE
- STA. 313+64 RT-LT : EXIST. 2" X TRU STEEL GAS TO BE RETIRED IN PLACE
- STA. 313+62—314+66 LT : EXIST. 2" X TRU STEEL GAS TO BE RETIRED IN PLACE
- STA. 313+95 RT-LT : EXIST. 1" PE DRISCO 8000 GAS TO BE RETIRED IN PLACE
- PROPOSED NEW GAS
- EXIST. GAS TO BE RETIRED IN PLACE

VERMONT GAS SYSTEMS, INC.
NATURAL GAS PIPELINE
PRESSURE: MEDIUM
SHELBURNE RD. ROUTE 7
SHELBURNE
 DWN. BY: ERDMAN ANTHONY
 DATE: FEBRUARY, 1996
 SCALE: 1"= 20'
 SHEET: 13

VAOT PROJ. # NH-EGC-019-4(27)
 GAS DESIGN & ASBUILT BY M.A. OF VGS.

Shelburne NH EGC 019-4 (27)
 Sheet 526 of 537