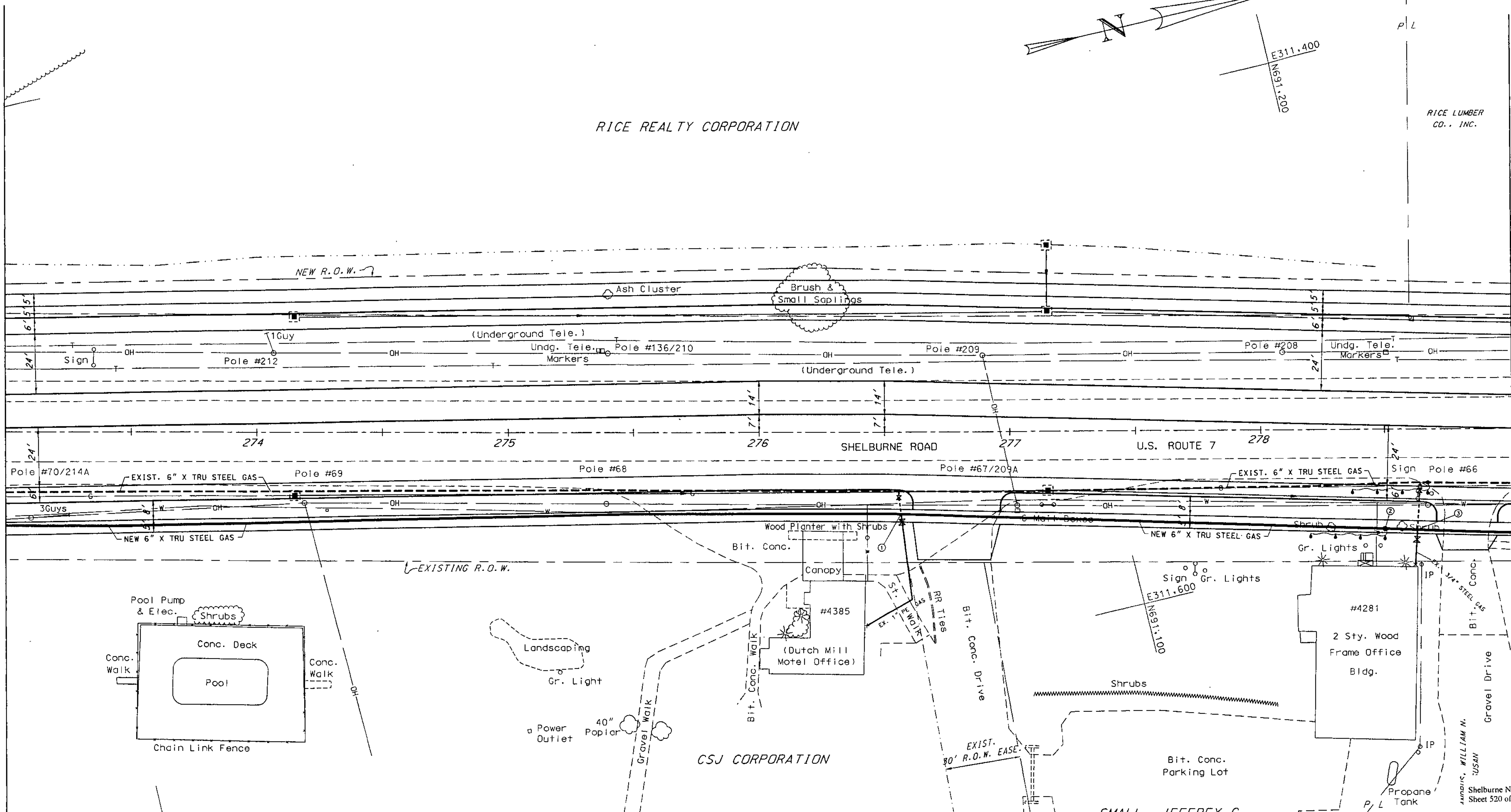


RICE REALTY CORPORATION

RICE LUMBER CO., INC.

MATCH TO PLAN DRAWING NO. 6 STA. 273+00 SHLB. RD.

MATCH TO PLAN DRAWING NO. 8 STA. 279+00 SHLB. RD.



— STA. 273+00—273+50 38' RT RTE. 7 : PROPOSED NEW 6" X TRU STEEL GAS  
 - - - STA. 273+50 38' RT—275+50 33' RT RTE. 7 : PROPOSED NEW 6" X TRU STEEL GAS  
 - - - STA. 275+50—276+50 33' RT RTE. 7 : PROPOSED NEW 6" X TRU STEEL GAS  
 - - - STA. 276+50 33' RT—279+00 42' RT RTE. 7 : PROPOSED NEW 6" X TRU STEEL GAS

- - - STA. 273+00—279+00 RT RTE. 7 : EXIST. 6" X TRU STEEL GAS TO BE RETIRED IN PLACE

**VERMONT GAS SYSTEMS, INC.**  
**NATURAL GAS PIPELINE**  
**PRESSURE: MEDIUM**  
**SHELBURNE RD. ROUTE 7**  
**SHELBURNE**  
 DWN. BY: ERDMAN ANTHONY  
 DATE: FEBRUARY, 1996  
 SCALE: 1"= 20' SHEET: 7

VAOT PROJ. # NH-EGC-019-4(27)  
 GAS DESIGN & ASBUILT BY M.A. OF VGS.

Shelburne NH EGC 019-4 (27)  
 Sheet 520 of 537