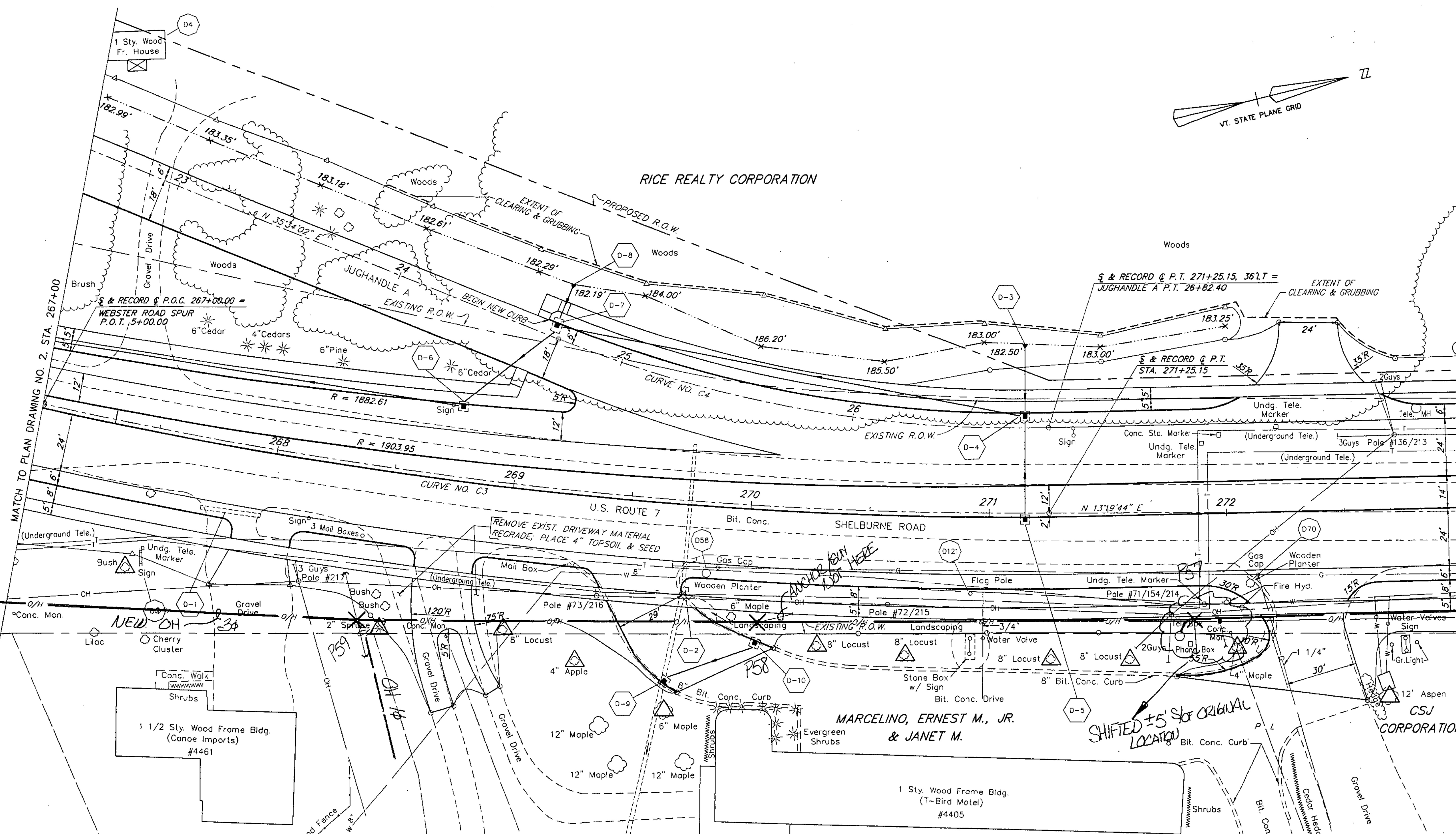


RICE REALTY CORPORATION

MATCH TO PLAN DRAWING NO. 2, STA. 267+00

MATCH TO PLAN DRAWING NO. 4, STA. 273+00



BOURGEA, ROGER L. & MIGNONNE G.

SCHUMACHER, ROBERT V. & BARBARA K.

HOES, H. DOUGLAS & JACQUELINE

GREEN MOUNTAIN POWER CORPORATION SOUTH BURLINGTON, VERMONT			
12470Y 4W 3PH FEEDER			
<h2>32G4 &amp; 53G2 OVERHEAD</h2>			
SHELburne ROAD RECONSTRUCTION			
DRAWN: _____ DATE: _____	CHECKED: _____ DRAWING NO. GMP-06_3_03	APPROVED: _____ SHEET: 2	SCALE: 1"=20' SHEET: 2

Shelburne NH EGC 019-4 (27)  
Sheet 496 of 537