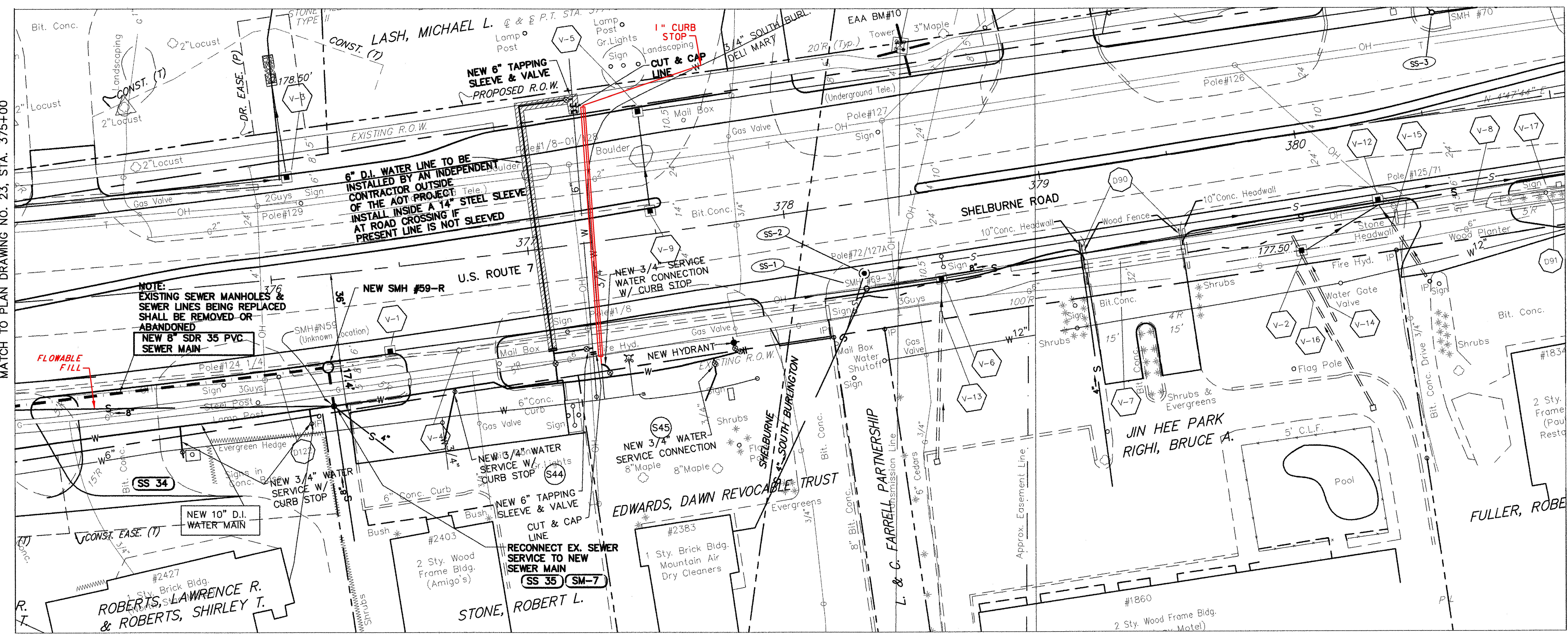
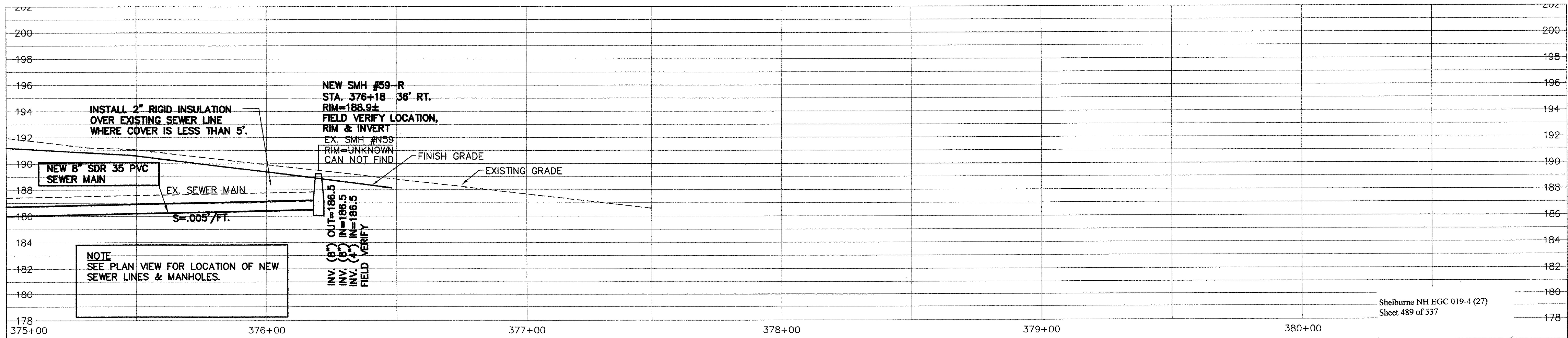


MATCH TO PLAN DRAWING NO. 23, STA. 375+00



PLAN
1" = 20'



PROFILE
1" = 4' VERTICAL
1" = 20' HORIZONTAL

RECORD DRAWING REVISIONS

NO.	DATE	DESCRIPTION
1.	11/10/09	FIELD MARK UPS ADDED TO THE PLANS



Date	Ch'k'd	Revision
2-17-04	SAV/ACL	REV'D PROFILE & ADDED 2-3/4" WATER SERVICES
1-5-04	SAV/ACL	REV'D WATER SYSTEM AS PER "AS BUILT" INFORMATION
10-21-03	SAV/ACL	REV'D SEWER & WATER AS PER AOT REVIEW COMMENTS
9-3-03	SAV/ACL	REVISED RIM ELEV. TO ±
7-21-03	SAV/ACL	REVISED

**TOWN OF SHELBURNE
SEWER/WATER RELOCATION (AOT WORK)
PLAN AND PROFILE
STA. 375+00 TO 381+00**

SHELBURNE VERMONT

Drawn by ACL Date DEC. 2000
Checked by SAV Scale AS NOTED
Approved by SAV Project No. 96111

CIVIL ENGINEERING ASSOCIATES, INC.
SHELBURNE, VERMONT

C-24

P:\AutoCAD Projects\169696111\ROUTE-7-SEWER.dwg, 02/17/2004, 11:44:27 AM