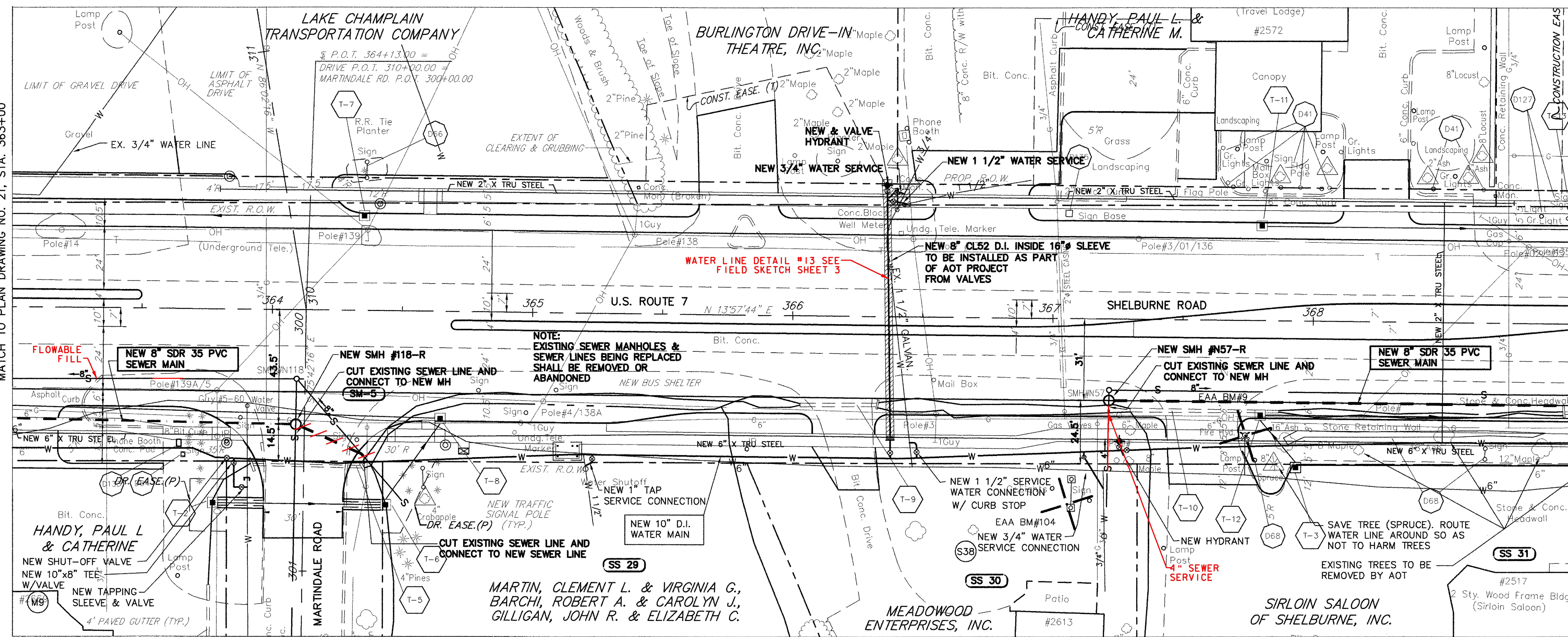
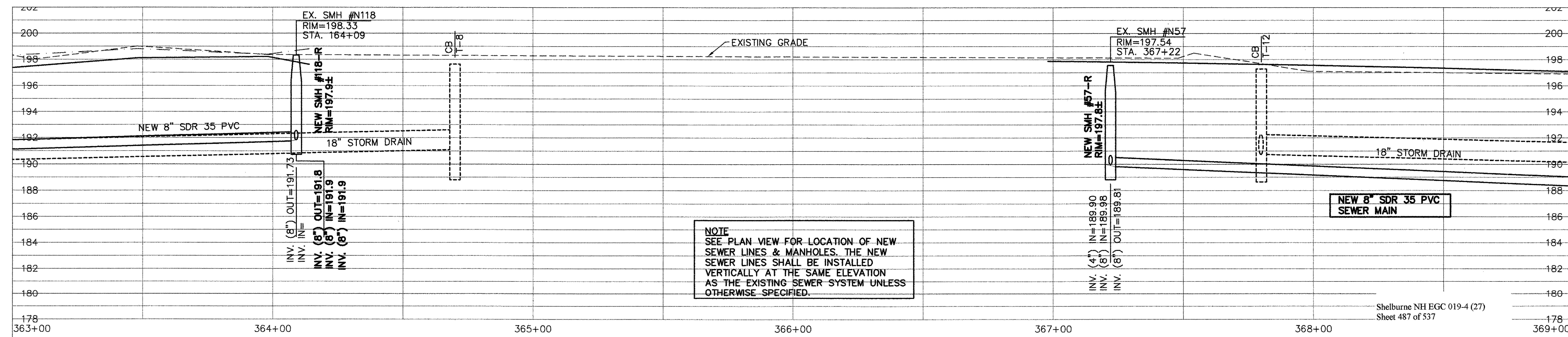
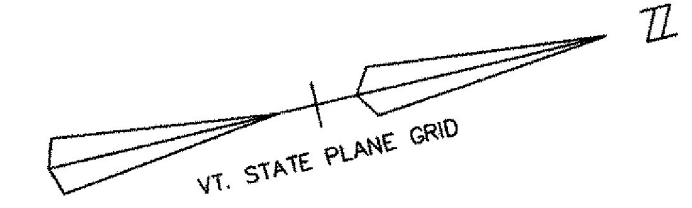


MATCH TO PLAN DRAWING NO. 21, STA. 363+00

MATCH TO PLAN DRAWING NO. 23, STA. 369+00



PLAN
1" = 20'



PROFILE
1" = 4' VERTICAL
1" = 20' HORIZONTAL

RECORD DRAWING REVISIONS

NO.	DATE	DESCRIPTION
1.	11/10/09	FIELD MARK UPS ADDED TO THE PLANS



Date	Ch'k'd	Revision
1-5-04	SAV/AQL	REV'D WATER SYSTEM AS PER "AS BUILT" INFORMATION
10-21-03	SAV/AQL	REV'D SEWER & WATER AS PER AOT REVIEW COMMENTS
9-3-03	SAV/AQL	REVISED PER REVIEW COMMENTS
7-21-03	SAV/AQL	REVISED

Drawn by: ACL Date: DEC. 2000
 Checked by: SAV Scale: AS NOTED
 Approved by: SAV Project No.: 96111

TOWN OF SHELBURNE
SEWER/WATER RELOCATION (AOT WORK)
PLAN AND PROFILE
STA. 363+00 TO 369+00

SHELBURNE VERMONT
CIVIL ENGINEERING ASSOCIATES, INC.
 SHELBURNE, VERMONT

C-22

P:\AutoCAD\Projects\1996\96111\ROUTE-7_SEWER.dwg, 01/07/2004 01:04:58 PM