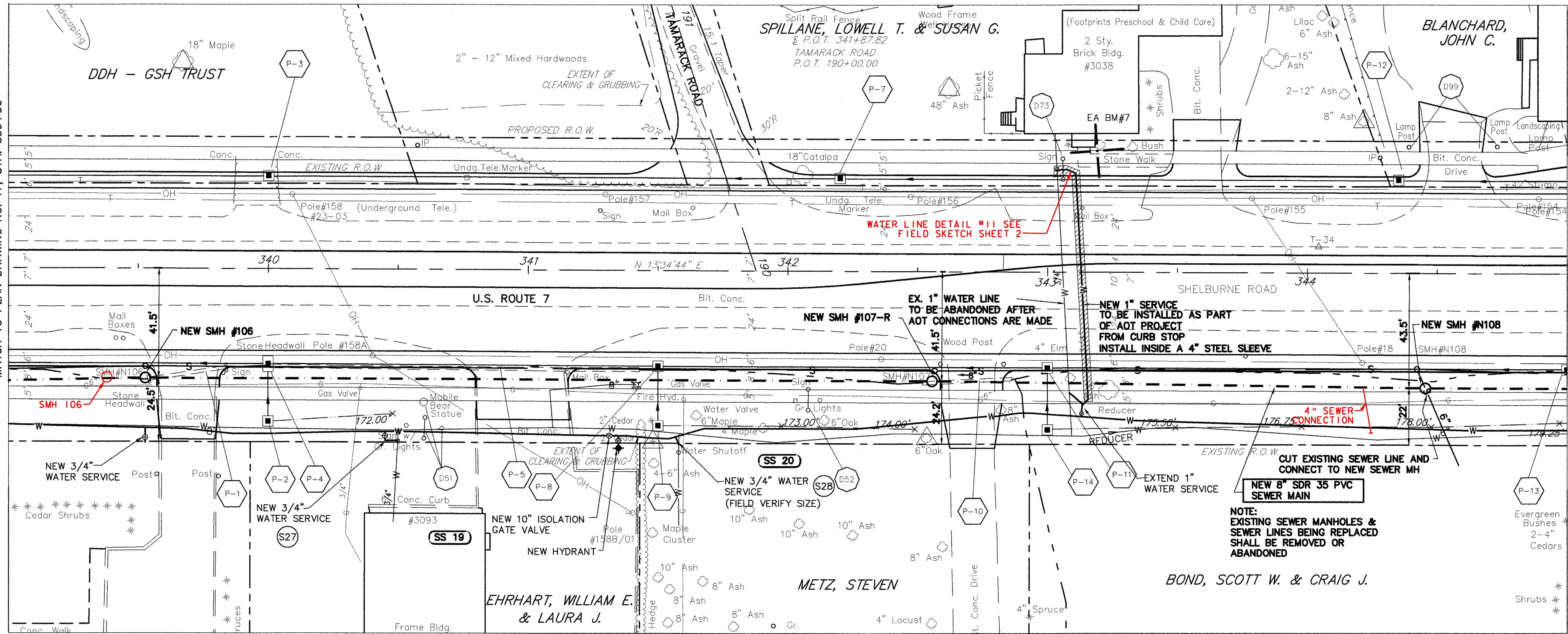
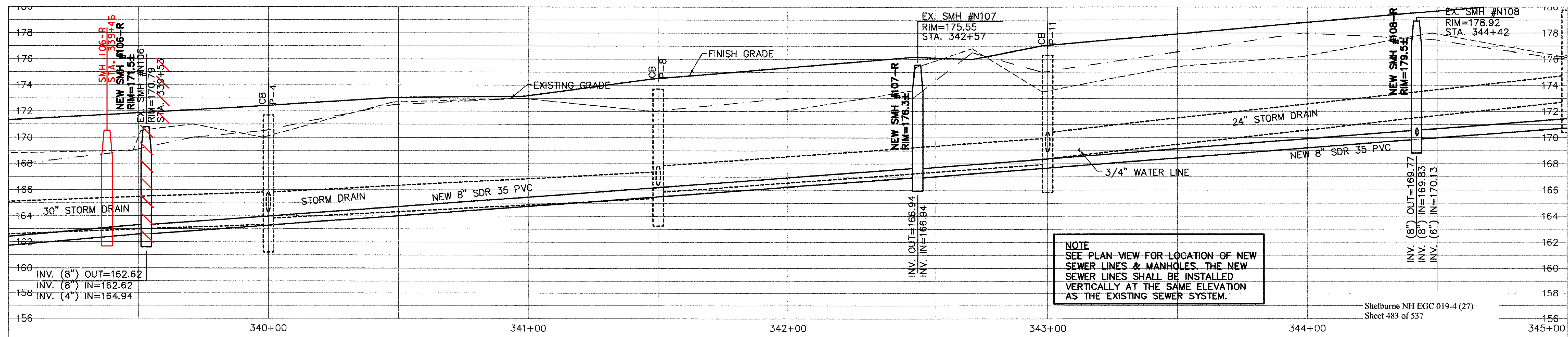
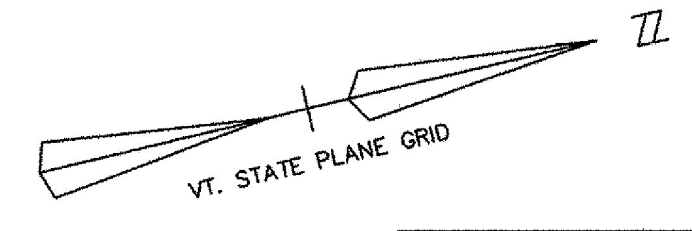


MATCH TO PLAN DRAWING NO. 17, STA. 339+00

MATCH TO PLAN DRAWING NO. 19, STA. 345+00



PLAN
1" = 20'

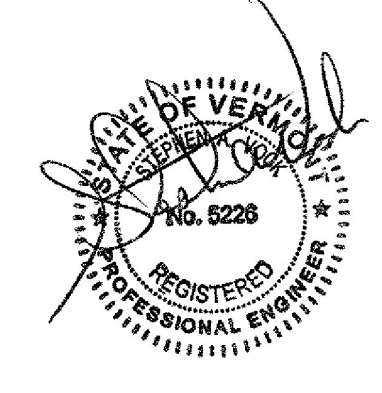


NOTE
SEE PLAN VIEW FOR LOCATION OF NEW SEWER LINES & MANHOLES. THE NEW SEWER LINES SHALL BE INSTALLED VERTICALLY AT THE SAME ELEVATION AS THE EXISTING SEWER SYSTEM.

PROFILE
1" = 4' VERTICAL
1" = 20' HORIZONTAL

RECORD DRAWING REVISIONS

NO.	DATE	DESCRIPTION
1.	11/10/09	FIELD MARK UPS ADDED TO THE PLANS



Date	Ch'k'd	Revision
2-17-04	SAV/AQL	REV'D WATER SYSTEM AS PER "AS BUILT" INFORMATION
10-21-03	SAV/AQL	REV'D SEWER & WATER AS PER AOT REVIEW COMMENTS
9-3-03	SAV/AQL	REVISED RIM ELEV. TO ±
7-21-03	SAV/AQL	REVISED

Drawn by SAV Date DEC., 2000
Checked by SAV Scale AS NOTED
Approved by SAV Project No. 96111

TOWN OF SHELBURNE
SEWER/WATER RELOCATION (AOT WORK)
PLAN AND PROFILE
STA. 339+00 TO 345+00

SHELBURNE VERMONT
CIVIL ENGINEERING ASSOCIATES, INC.
SHELBURNE, VERMONT

SHEET C-18

P:\AutoCAD\Projects\1986186111\ROUTE-7-SEWER.dwg, 02/17/2004 11:37:48 AM