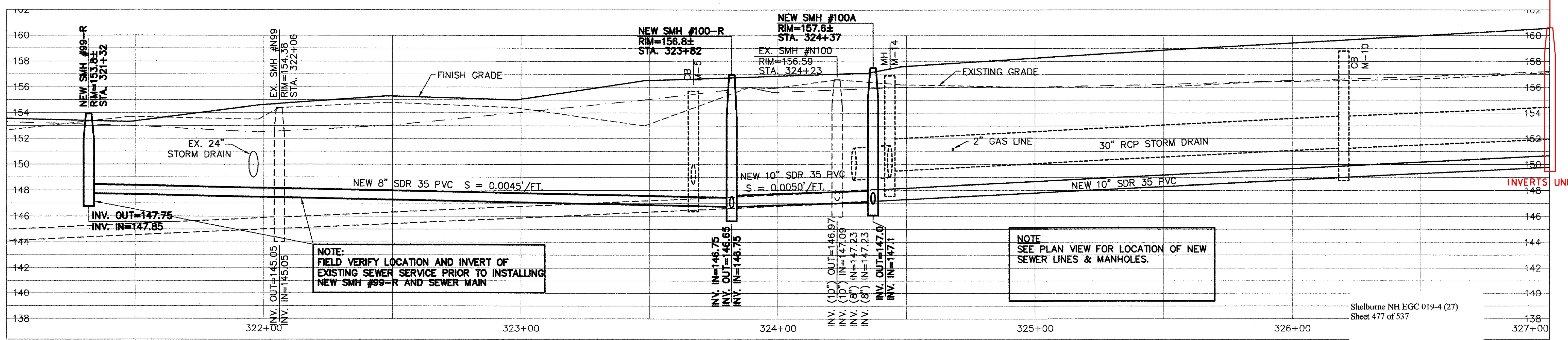
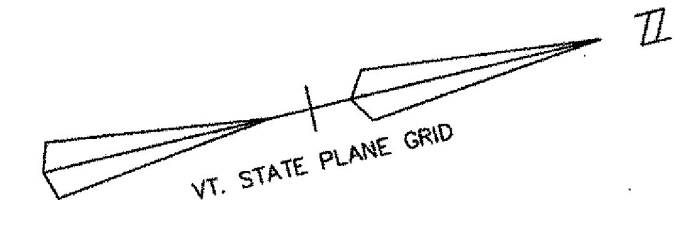


PLAN
1" = 20'



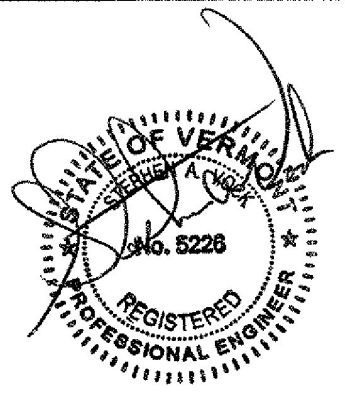
PROFILE
1" = 4' VERTICAL
1" = 20' HORIZONTAL

NOTE:
FIELD VERIFY LOCATION AND INVERT OF EXISTING SEWER SERVICE PRIOR TO INSTALLING NEW SMH #99-R AND SEWER MAIN

NOTE:
SEE PLAN VIEW FOR LOCATION OF NEW SEWER LINES & MANHOLES.

RECORD DRAWING REVISIONS

NO.	DATE	DESCRIPTION
1.	11/10/09	FIELD MARK UPS ADDED TO THE PLANS



Date	Ch'kd	Revision
1-5-04	SAV/AQL	REV'D WATER SYSTEM AS PER "AS BUILT" INFORMATION
10-21-03	SAV/AQL	REV'D SEWER & WATER AS PER AOT REVIEW COMMENTS
9-3-03	SAV/AQL	REVISED RIM ELEV. TO ±
7-21-03	SAV/AQL	REVISED

TOWN OF SHELBURNE
SEWER/WATER RELOCATION (AOT WORK)
PLAN AND PROFILE
STA. 321+00 TO 327+00

Shelburne NH EGC 019-4 (27)
Sheet 477 of 537

CIVIL ENGINEERING ASSOCIATES, INC.
SHELBURNE, VERMONT

C-15

P:\AutoCAD\DD Projects\1999\0611\ROUTE-7-SEWER.dwg, 01/05/2004 03:37:21 PM