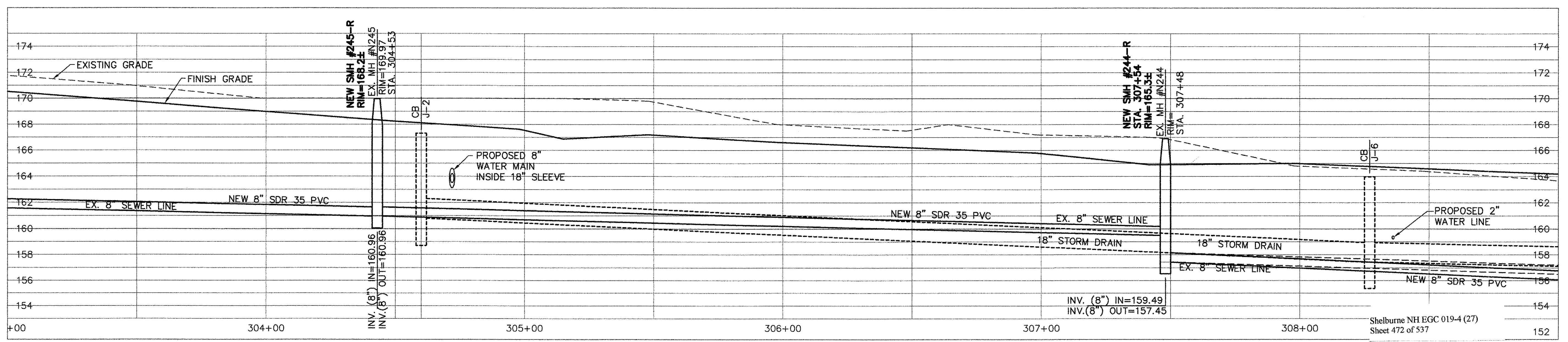
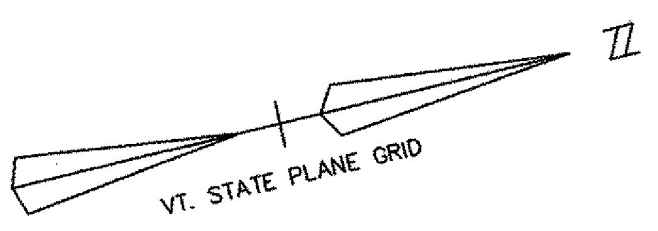


MATCH TO PLAN DRAWING NO. 11E, STA. 303+00

MATCH TO PLAN DRAWING NO. 13E, STA. 309+00

PLAN
1" = 20'



PROFILE
1" = 4' VERTICAL
1" = 20' HORIZONTAL

RECORD DRAWING REVISIONS

NO.	DATE	DESCRIPTION
1.	11/10/09	FIELD MARK UPS ADDED TO THE PLANS



Date	Ch'kd	Revision
10-21-03	SAV/ACL	REV'D SEWER & WATER AS PER AOT REVIEW COMMENTS
9-3-03	SAV/ACL	REVISED RIM ELEV. TO ±
7-21-03	SAV/ACL	REVISED

Drawn by	ACL	Date	DEC., 2000
Checked by	SAV	Scale	AS NOTED
Approved by	SAV	Project No.	96111

TOWN OF SHELBURNE
SEWER/WATER RELOCATION (AOT WORK)
PLAN AND PROFILE
STA. 303+00 TO 309+00

SHELBURNE VERMONT
CIVIL ENGINEERING ASSOCIATES, INC.
SHELBURNE, VERMONT

C-12E

P:\AutoCAD Projects\1996\96111\ROUTE-7-SEWER.dwg, 10/21/2003 05:38:10 PM