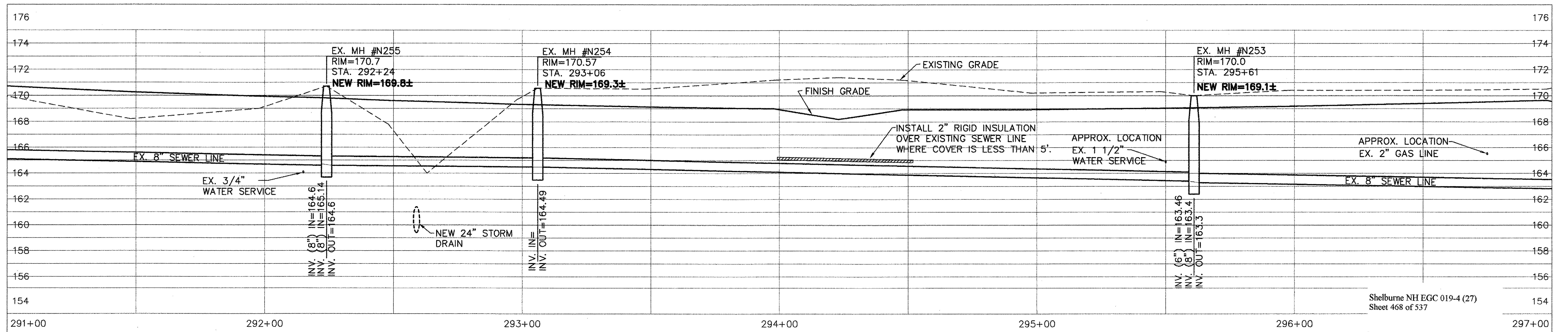
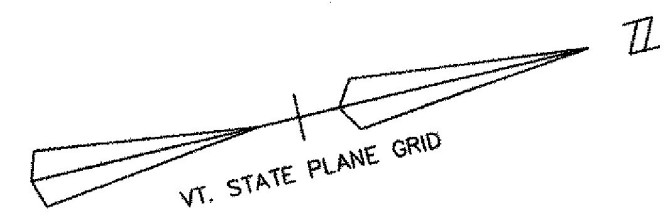


PLAN
1" = 20'



PROFILE
1" = 4' VERTICAL
1" = 20' HORIZONTAL



Date	Ch'k'd	Revision
1-5-04	SAV/ACL	REVD WATER SYSTEM AS PER "AS BUILT" INFORMATION
10-21-03	SAV/ACL	REVD SEWER & WATER AS PER AOT REVIEW COMMENTS
9-3-03	SAV/ACL	REVISED RIM ELEV. TO ±
7-21-03	SAV/ACL	REVISED

Drawn by	ACL	Date	DEC., 2000
Checked by	SAV	Scale	AS NOTED
Approved by	SAV	Project No.	96111

TOWN OF SHELburne	
SEWER/WATER RELOCATION (AOT WORK)	
PLAN AND PROFILE	
STA. 291+00 TO 297+00	
SHELburne	VERMONT
CIVIL ENGINEERING ASSOCIATES, INC.	SHELburne, VERMONT

P:\AutoCAD Projects\1998\98111\ROUTE-7-SEWER.dwg, 01/05/2004 11:25:21 AM