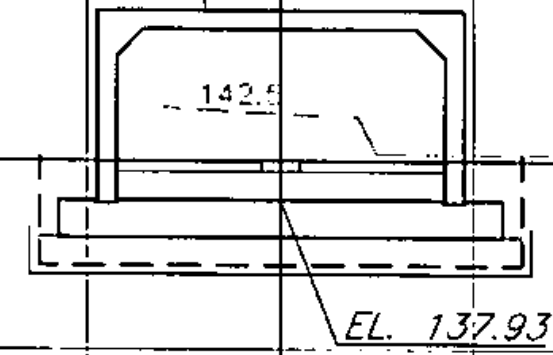


DATUM ELEV. = 140.0

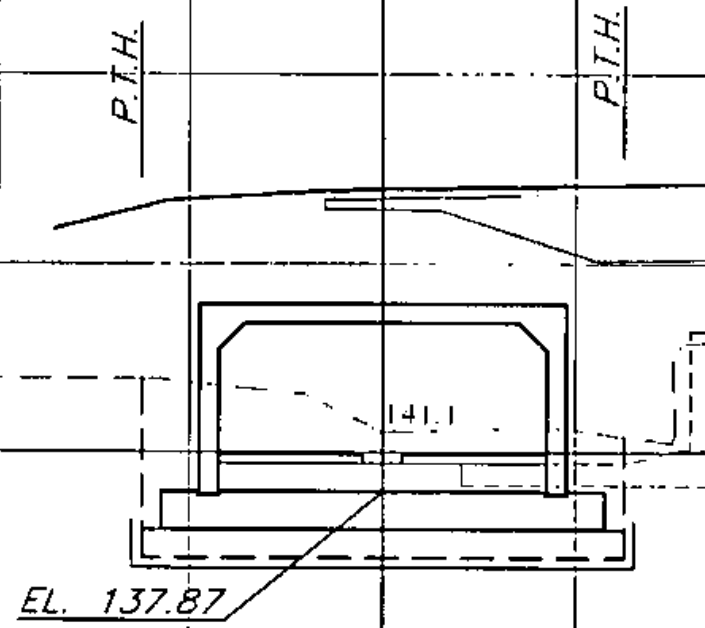
17' x 9' PRECAST CONC. BOX CULVERT

STA. 120+69 END STREAM BED MATERIAL BEGIN STONE FILL, TYPE II BEGIN UNCLASSIFIED CHANNEL EXCAVATION



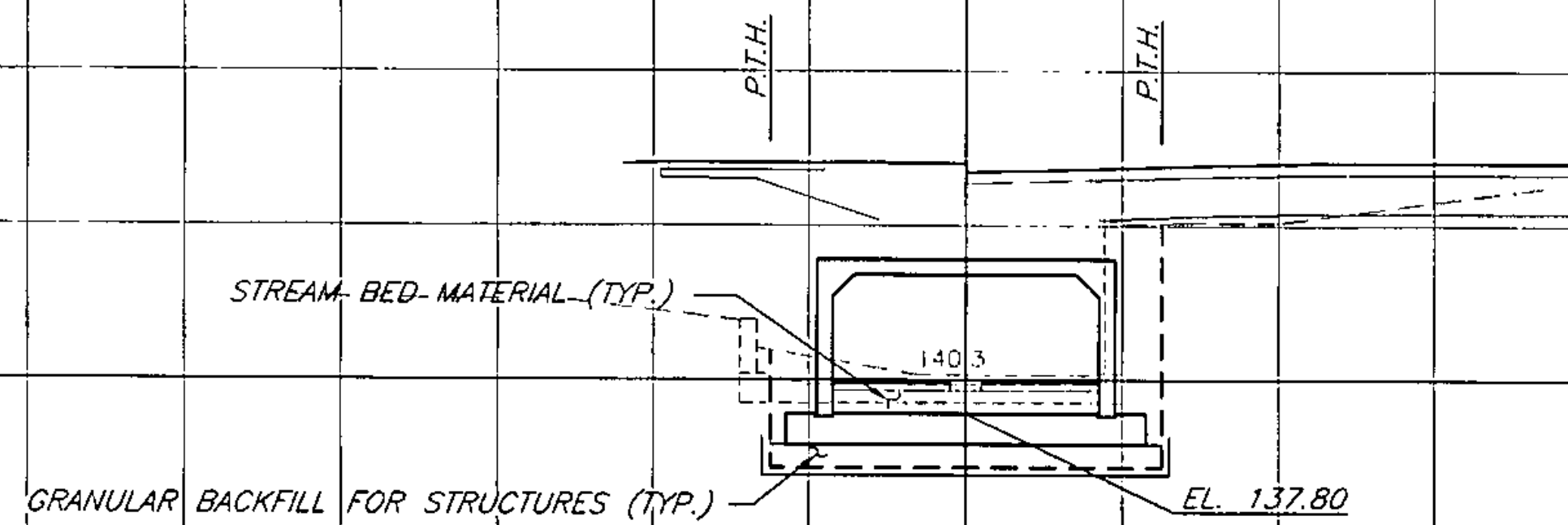
120-63

DATUM ELEV. = 140.0



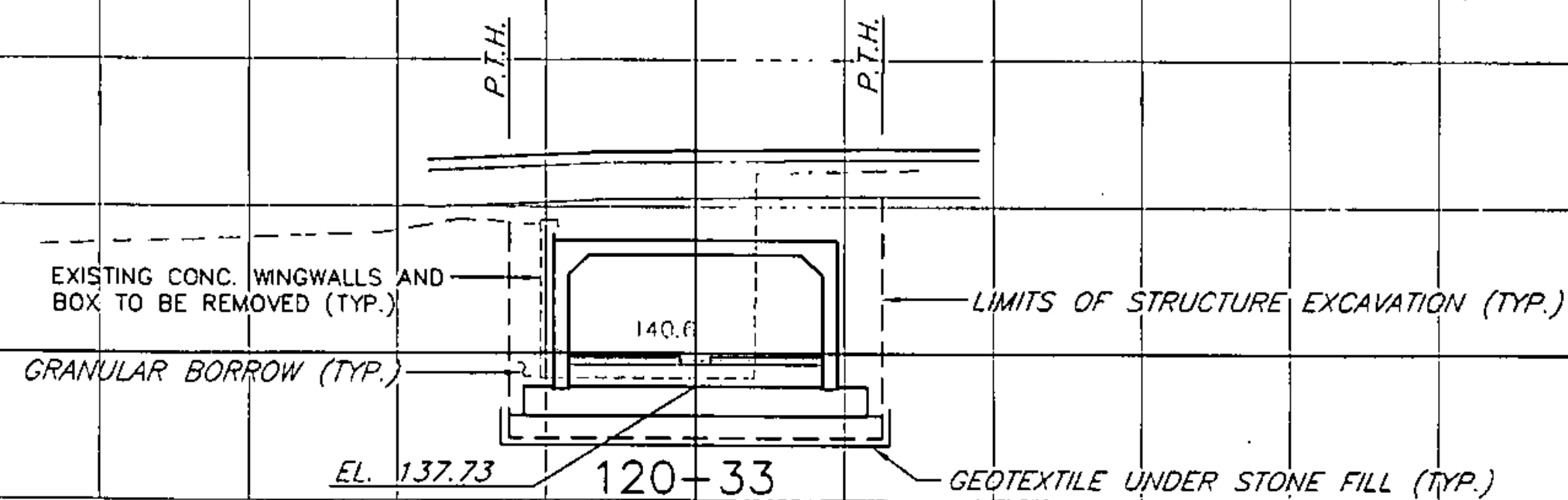
120-53

DATUM ELEV. = 140.0

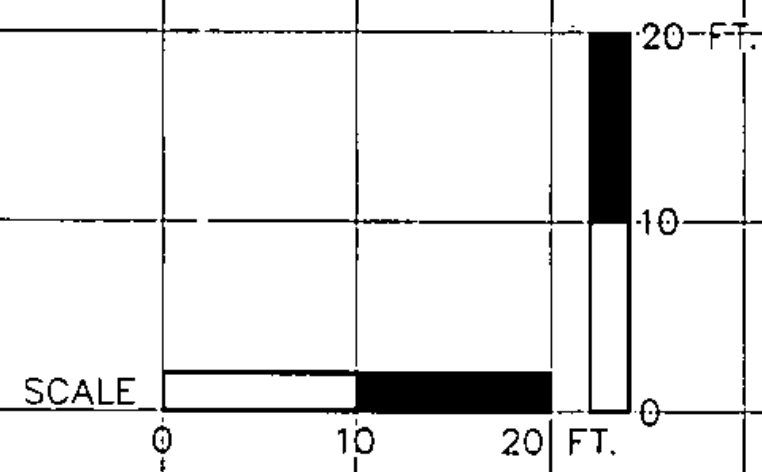


120-43

DATUM ELEV. = 140.0



120-33



STATE OF VERMONT  
AGENCY OF TRANSPORTATION

Town Of	SHELBURNE	Bridge No.	145
Highway No.	U.S. ROUTE 7	Lea. Sta.	196+79
		Surv. Sta.	319+30
U.S. ROUTE 7 OVER MUNROE BROOK			
X-SECTIONS STA. 120+33 TO 120+63			

Designed By	L.Jank	Drawn By	S.Senoff
Checked By	J.Corliss	Date	April 2003
		Bridge Design Supervisor	W.Windus
		Date	April 2003
PROJECT	SHELBURNE	PROJECT NO.	NHEGC FECC 019-4(27)
I.G.C. Infr.			
Bridge Sheet No.	BC111	Sheet	451 of 537

ERDMAN ANTHONY  
CONSULTING ENGINEERS  
Rochester, New York    Comp Hill, Pennsylvania  
Boston, Massachusetts