

CATAMOUNT/SHELBURNE LLC

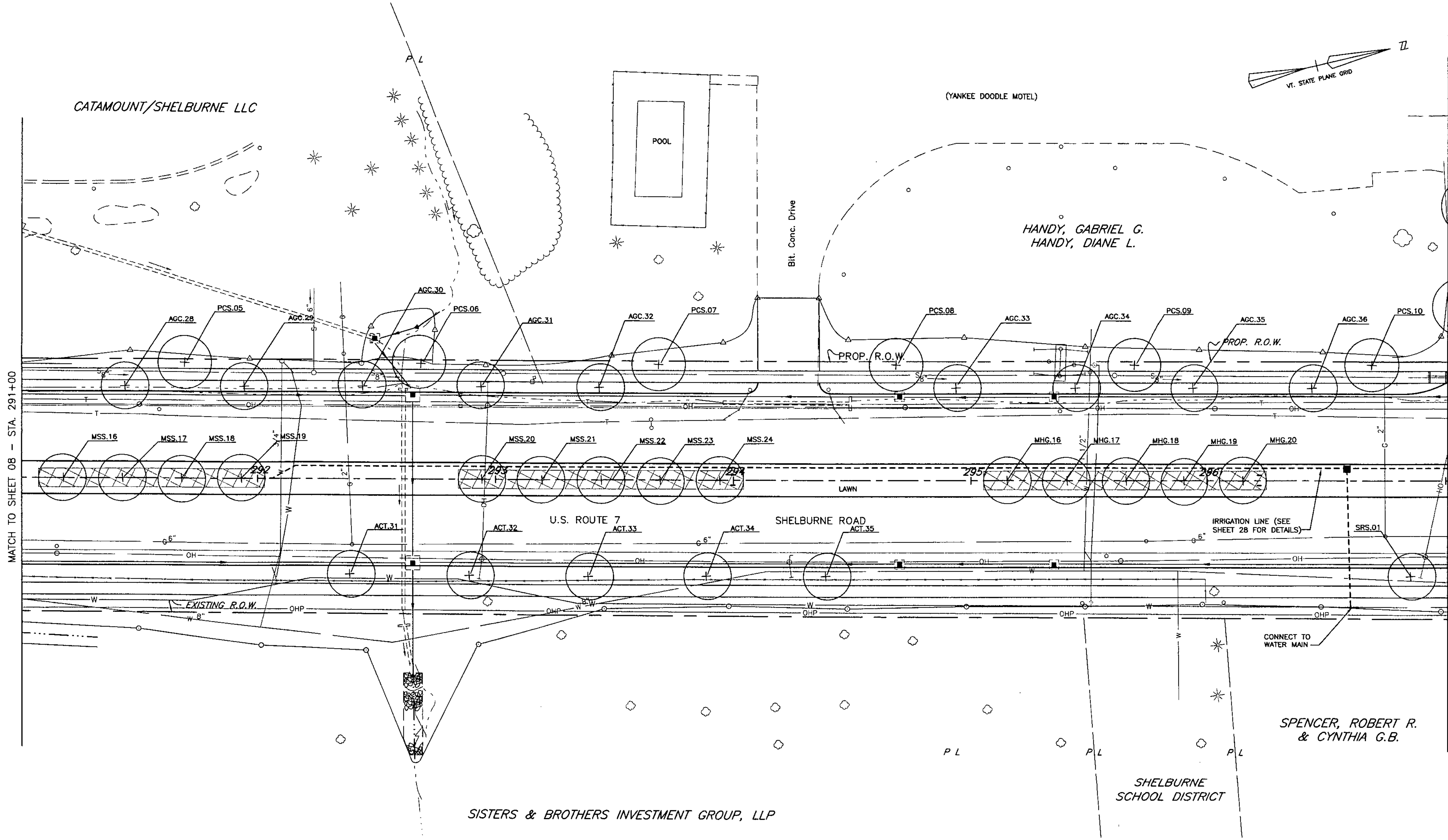
(YANKEE DOODLE MOTEL)

POOL

HANDY, GABRIEL G.
HANDY, DIANE L.

MATCH TO SHEET 08 - STA. 291+00

MATCH TO SHEET 10 - STA. 297+00



LEGEND

- EXISTING TREELINE
- EXISTING EVERGREEN TREE
- EXISTING DECIDUOUS TREE
- TOE OF SLOPE
- TOP OF CUT
- TREE BED - SEE DETAIL SHEET 02
- PROPOSED DECIDUOUS TREE WITH PLANT TYPE AND PAY ITEM
- APPROX. LOCATION OF OVERHEAD POWERLINES
- STREET LIGHT

DATUM
VERTICAL _____
HORIZONTAL _____



DuBois King
engineering planning management development

LANDSCAPE PLAN
STA 291+00 TO 297+00

PROJECT: SHELBURNE/SOUTH BURLINGTON ROUTE 7 IMPROVEMENTS	PROJECT NO. : NH EGC FECC-019-4(27)
DESIGN FILE NAME: 118317F-09	PLOT DATE: 4/28/04
IPARM FILE NAME:	SURVEY DATE:
SURVEYED BY:	DRAWN BY: K. KOLOSKI
SQUAD LEADER:	SHEET 297 OF 537
DWG NO. 9 OF 28	

SISTERS & BROTHERS INVESTMENT GROUP, LLP

SHELBURNE SCHOOL DISTRICT

SPENCER, ROBERT R.
& CYNTHIA G.B.