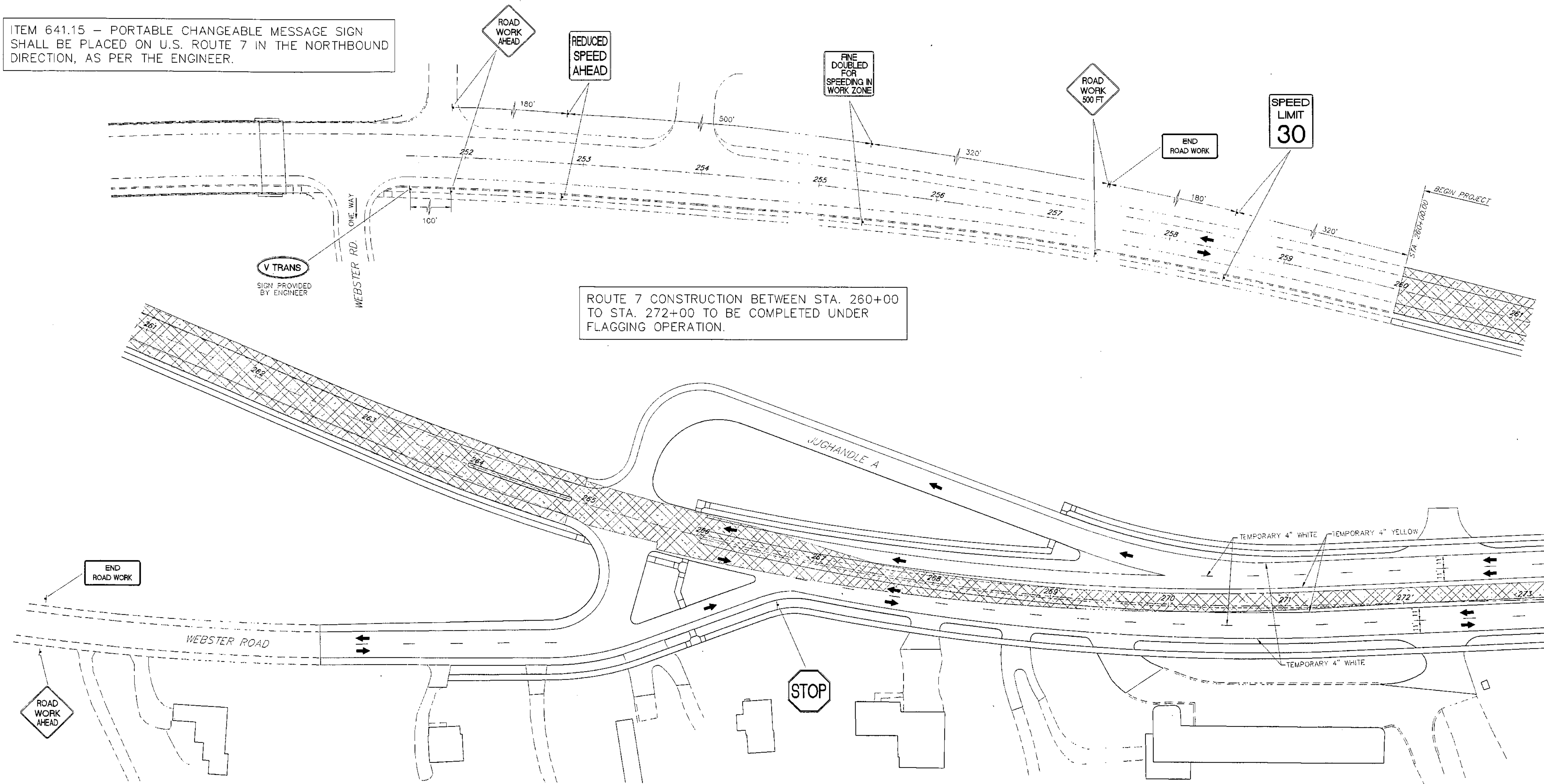
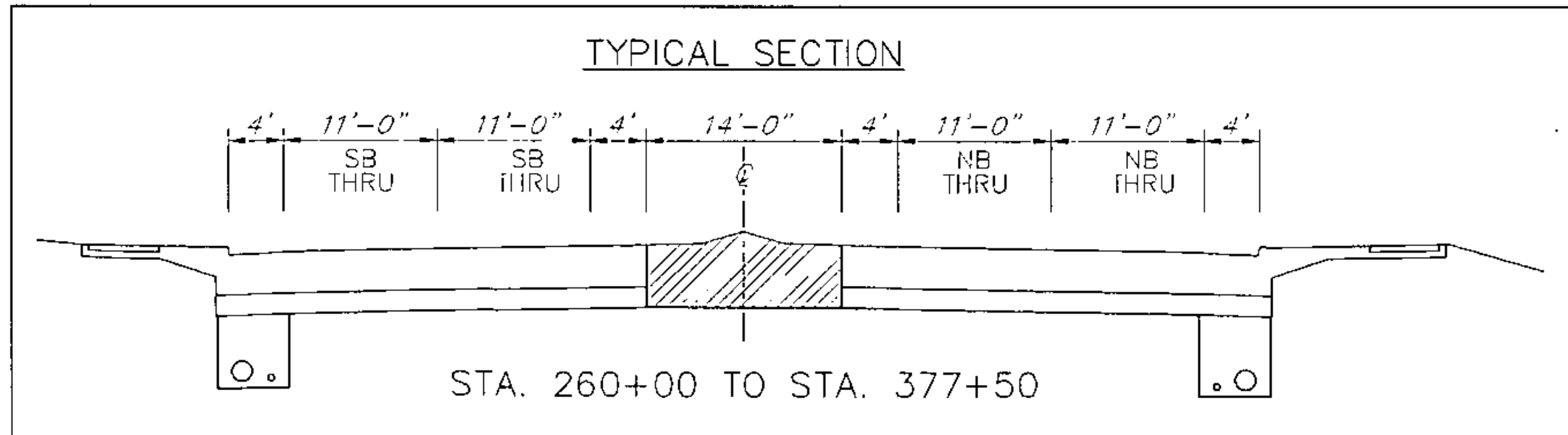


ITEM 641.15 - PORTABLE CHANGEABLE MESSAGE SIGN SHALL BE PLACED ON U.S. ROUTE 7 IN THE NORTHBOUND DIRECTION, AS PER THE ENGINEER.



ROUTE 7 CONSTRUCTION BETWEEN STA. 260+00 TO STA. 272+00 TO BE COMPLETED UNDER FLAGGING OPERATION.

DATUM
VERTICAL NGVD 1929
HORIZONTAL NAD 1927



LEGEND	
	WORK ZONE
	TRAFFIC FLOW DIRECTION
	BARRIEL
	TYPE III BARRICADE
	SIGN LOCATION; TEMPORARY MOUNTING
	SIGN MOUNTED ON TYPE III BARRICADE
	FLAGGER LOCATION
	TRAFFIC CONE
	FLASHING ARROW BOARD

SCALE IN FEET
0 40 80
4/13/04

PHASE 4
SHELburnE

SURVEYED BY V.S.C. INC. DATE _____
DRAWN BY E.A.A. INC. DATE _____
TRACED BY E.A.A. INC. DATE _____

PROJECT NH-EGC-019-4(27)
TRAFFIC CONTROL DRAWING NO. 21
SHEET NO. 282 OF 537