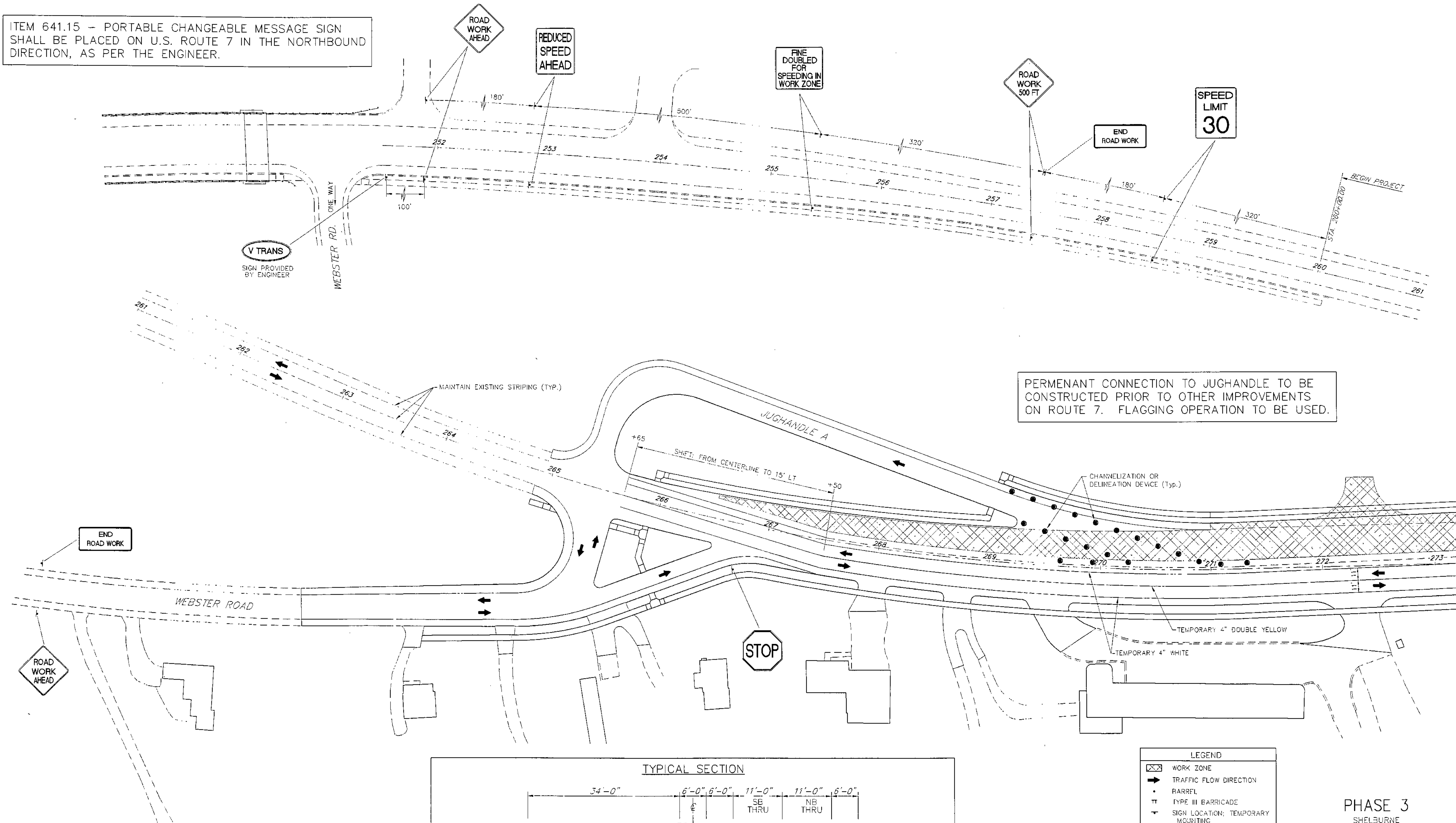
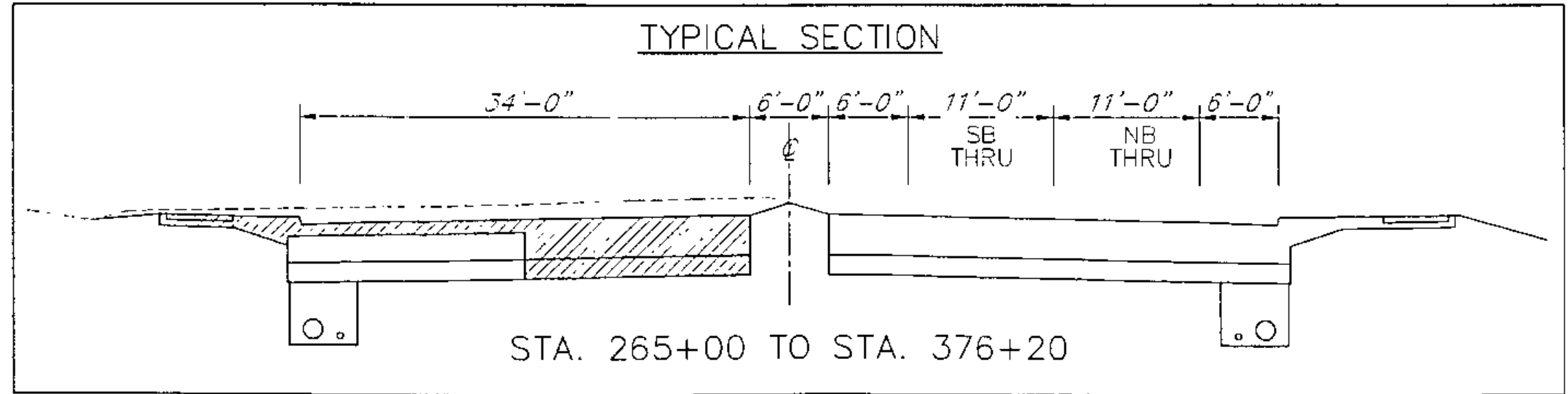


ITEM 641.15 - PORTABLE CHANGEABLE MESSAGE SIGN SHALL BE PLACED ON U.S. ROUTE 7 IN THE NORTHBOUND DIRECTION, AS PER THE ENGINEER.



PERMANENT CONNECTION TO JUGHANDLE TO BE CONSTRUCTED PRIOR TO OTHER IMPROVEMENTS ON ROUTE 7. FLAGGING OPERATION TO BE USED.



LEGEND	
	WORK ZONE
	TRAFFIC FLOW DIRECTION
	BARREL
	TYPE III BARRICADE
	SIGN LOCATION; TEMPORARY MOUNTING
	SIGN MOUNTED ON TYPE III BARRICADE
	FLAGGER LOCATION
	TRAFFIC CONE
	FLASHING ARROW BOARD

**PHASE 3**  
SHELBURNE

SURVEYED BY V.S.C. INC. DATE \_\_\_\_\_  
 DRAWN BY E.A.A. INC. DATE \_\_\_\_\_  
 TRACED BY E.A.A. INC. DATE \_\_\_\_\_

PROJECT NH-ESC-019-4(27)  
 TRAFFIC CONTROL DRAWING NO. 15  
 SHEET NO. 276 OF 537

DATUM  
 VERTICAL NVD 1929  
 HORIZONTAL NAD 1927

