

POLE NO.	STATION	OFFSET	SIDE	LENGTH OF POLE	WALL THICK	BRK-WAY	LUMINAIRE WATTS	LUMINAIRE TYPE	MOUNT HEIGHT	CONC. BASE	REMARKS
C1	265+06	27'	LT.	12'			250	III	35'		MOUNT TRUSS-TYPE SUPPORT ARM ON CANTILEVER # 1
C2	265+06	33'	RT.	12'			250	III	35'		MOUNT TRUSS-TYPE SUPPORT ARM ON CANTILEVER # 2
C3	265+68	25'	LT.	12'			250	III	35'		MOUNT TRUSS-TYPE SUPPORT ARM ON CANTILEVER # 3
C4	265+68	26'	RT.	12'			250	III	35'		MOUNT TRUSS-TYPE SUPPORT ARM ON CANTILEVER # 4

LIGHTING ITEMS

ITEM 678.21 - ELECTRICAL CONDUIT (2" PVC SCHEDULE 40)

5+59 RT. (L-2) - 267+00 RT., 55 LF
 266+01 LT. (L-45) - 267+00 LT., 99 LF

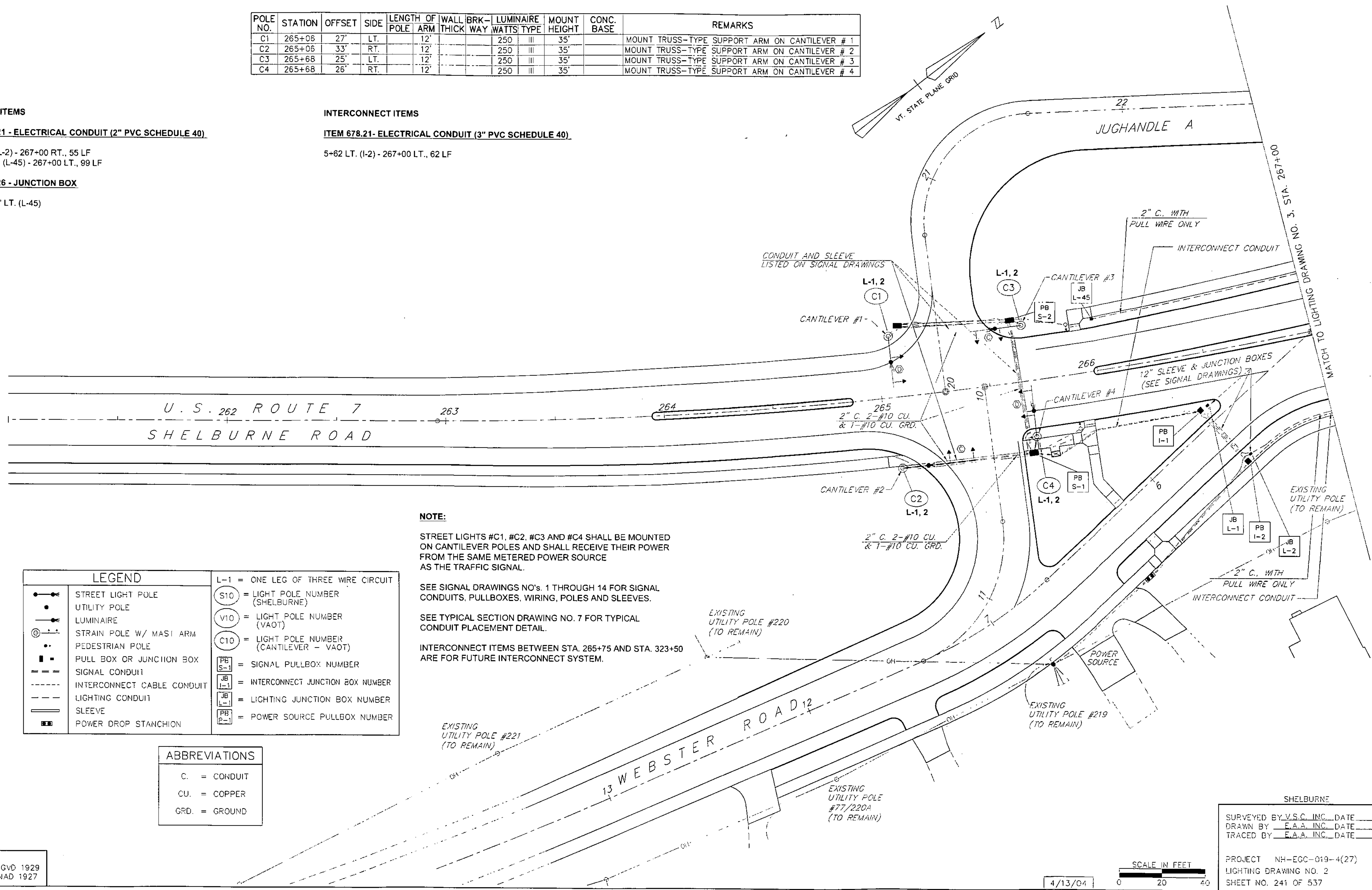
ITEM 678.26 - JUNCTION BOX

266+01, 24' LT. (L-45)

INTERCONNECT ITEMS

ITEM 678.21 - ELECTRICAL CONDUIT (3" PVC SCHEDULE 40)

5+62 LT. (I-2) - 267+00 LT., 62 LF



NOTE:

STREET LIGHTS #C1, #C2, #C3 AND #C4 SHALL BE MOUNTED ON CANTILEVER POLES AND SHALL RECEIVE THEIR POWER FROM THE SAME METERED POWER SOURCE AS THE TRAFFIC SIGNAL.

SEE SIGNAL DRAWINGS NO'S. 1 THROUGH 14 FOR SIGNAL CONDUITS, PULLBOXES, WIRING, POLES AND SLEEVES.

SEE TYPICAL SECTION DRAWING NO. 7 FOR TYPICAL CONDUIT PLACEMENT DETAIL.

INTERCONNECT ITEMS BETWEEN STA. 265+75 AND STA. 323+50 ARE FOR FUTURE INTERCONNECT SYSTEM.

LEGEND	
	STREET LIGHT POLE
	UTILITY POLE
	LUMINAIRE
	STRAIN POLE W/ MAST ARM
	PEDESTRIAN POLE
	PULL BOX OR JUNCTION BOX
	SIGNAL CONDUIT
	INTERCONNECT CABLE CONDUIT
	LIGHTING CONDUIT
	SLEEVE
	POWER DROP STANCHION

L-1	= ONE LEG OF THREE WIRE CIRCUIT
S10	= LIGHT POLE NUMBER (SHELBURNE)
V10	= LIGHT POLE NUMBER (VAOT)
C10	= LIGHT POLE NUMBER (CANTILEVER - VAOT)
PB S-1	= SIGNAL PULLBOX NUMBER
JB L-1	= INTERCONNECT JUNCTION BOX NUMBER
JB L-2	= LIGHTING JUNCTION BOX NUMBER
PB P-1	= POWER SOURCE PULLBOX NUMBER

ABBREVIATIONS

C.	= CONDUIT
CU.	= COPPER
GRD.	= GROUND

DATUM
 VERTICAL NGVD 1929
 HORIZONTAL NAD 1927

SHELBURNE
 SURVEYED BY V.S.C. INC. DATE _____
 DRAWN BY E.A.A. INC. DATE _____
 TRACED BY E.A.A. INC. DATE _____
 PROJECT NH-ECC-019-4(27)
 LIGHTING DRAWING NO. 2
 SHEET NO. 241 OF 537

4/13/04

SCALE IN FEET
 0 20 40