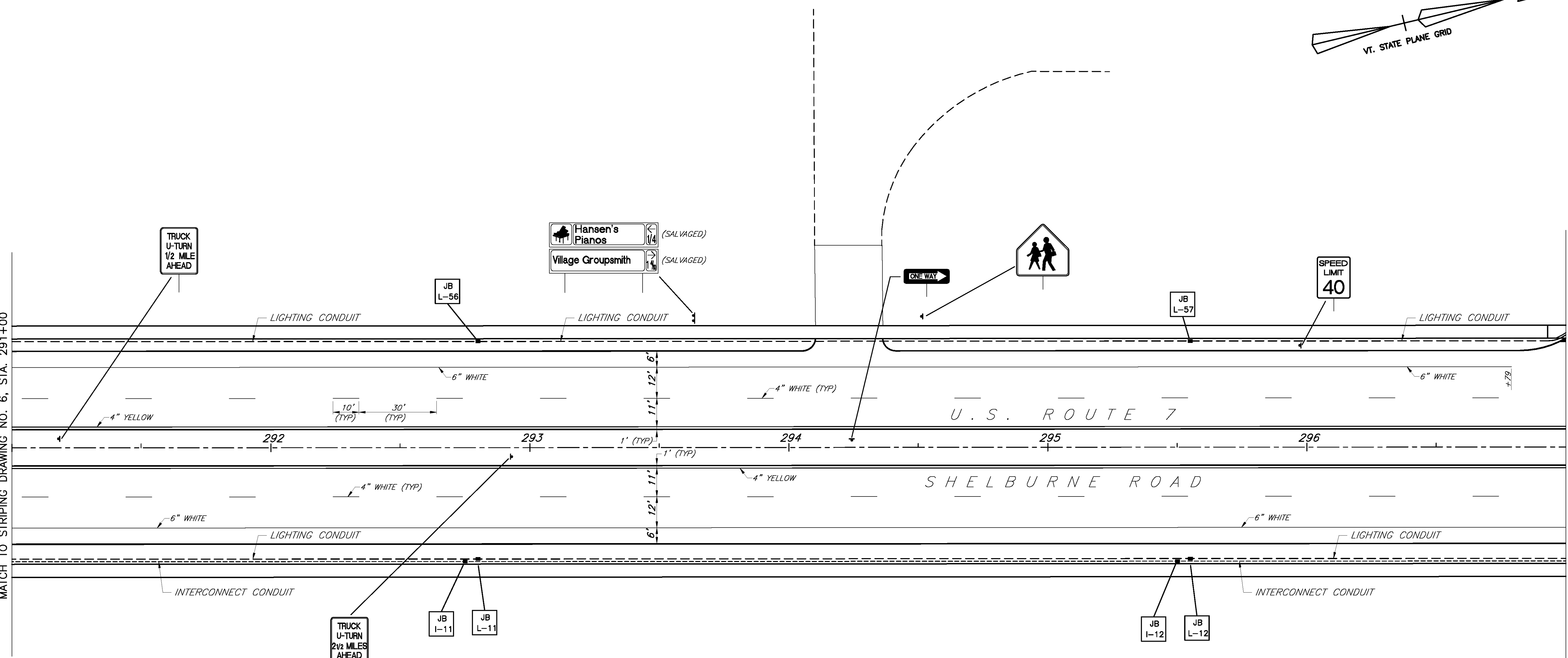


MATCH TO STRIPING DRAWING NO. 6, STA. 291+00

MATCH TO STRIPING DRAWING NO. 8, STA. 297+00



LEGEND	
	STREET LIGHT POLE
	UTILITY POLE
	LUMINAIRE
	STRAIN POLE W/ MAST ARM
	PEDESTRIAN POLE
	PULL BOX OR JUNCTION BOX
	SIGNAL CONDUIT
	INTERCONNECT CABLE CONDUIT
	LIGHTING CONDUIT
	SIGN MOUNTING POST(S)
	OVERHEAD MOUNTED SIGN
	= SIGNAL PULLBOX NUMBER
	= INTERCONNECT JUNCTION BOX NUMBER
	= LIGHTING JUNCTION BOX NUMBER
	= POWER SOURCE PULLBOX NUMBER

GENERAL NOTES:

- SEE LIGHTING DRAWINGS NO's. 1 THROUGH 21 FOR LIGHTING CONDUITS, JUNCTION BOXES, WIRING AND SLEEVES.
- SEE LIGHTING DRAWINGS NO's. 1 THROUGH 21 FOR INTERCONNECT CONDUITS, JUNCTION BOXES, WIRING AND SLEEVES
- SEE SIGNAL DRAWINGS NO's. 1 THROUGH 14 FOR SIGNAL CONDUITS, PULLBOXES, WIRING, POLES AND SLEEVES.
- INTERCONNECTING CABLE SHALL BE PLACED IN 2" PVC SCHEDULE 40 CONDUIT
- SEE TYPICAL SECTION DRAWING NO. 7 FOR TYPICAL CONDUIT PLACEMENT DETAIL.

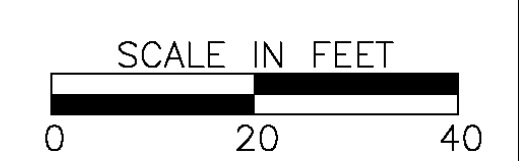
SIGN NOTES:

- THE CONTRACTOR SHALL PROVIDE APPROPRIATE HARDWARE TO TOP MOUNT THE STREET NAME SIGNS, INCIDENTAL TO THE TRAFFIC SIGN ITEMS.
- SIGNS ON THE MAST ARMS SHALL BE MOUNTED WITH BLACK HARDWARE ARE TO MATCH THE MAST ARM AND SHALL BE PAID UNDER ITEM 675.20, TRAFFIC SIGNS, TYPE A.
- ALL SIGNS AND POSTS ARE NEW UNLESS OTHERWISE NOTED.
- CCTA BUS STOP SIGNS TO BE OBTAINED FROM CCTA.

ERECTING SALVAGED SIGNS
2 EA

DATUM
VERTICAL NGVD 1929
HORIZONTAL NAD 1927

7/20/04



SHELBURNE

SURVEYED BY V.S.C. INC. DATE _____
 DRAWN BY E.A.A. INC. DATE _____
 TRACED BY E.A.A. INC. DATE _____

PROJECT NH-EGC-019-4(27)
 SIGN AND STRIPING DRAWING NO. 7
 SHEET NO. 164 OF 537