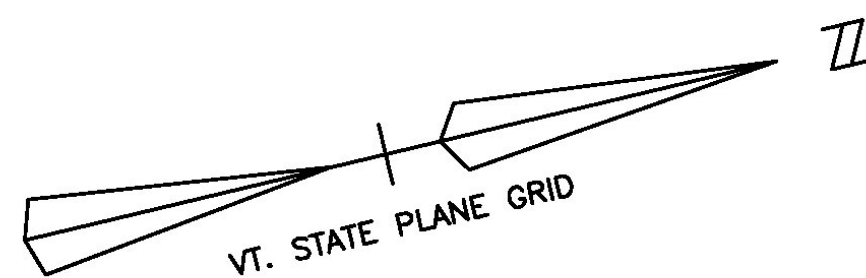
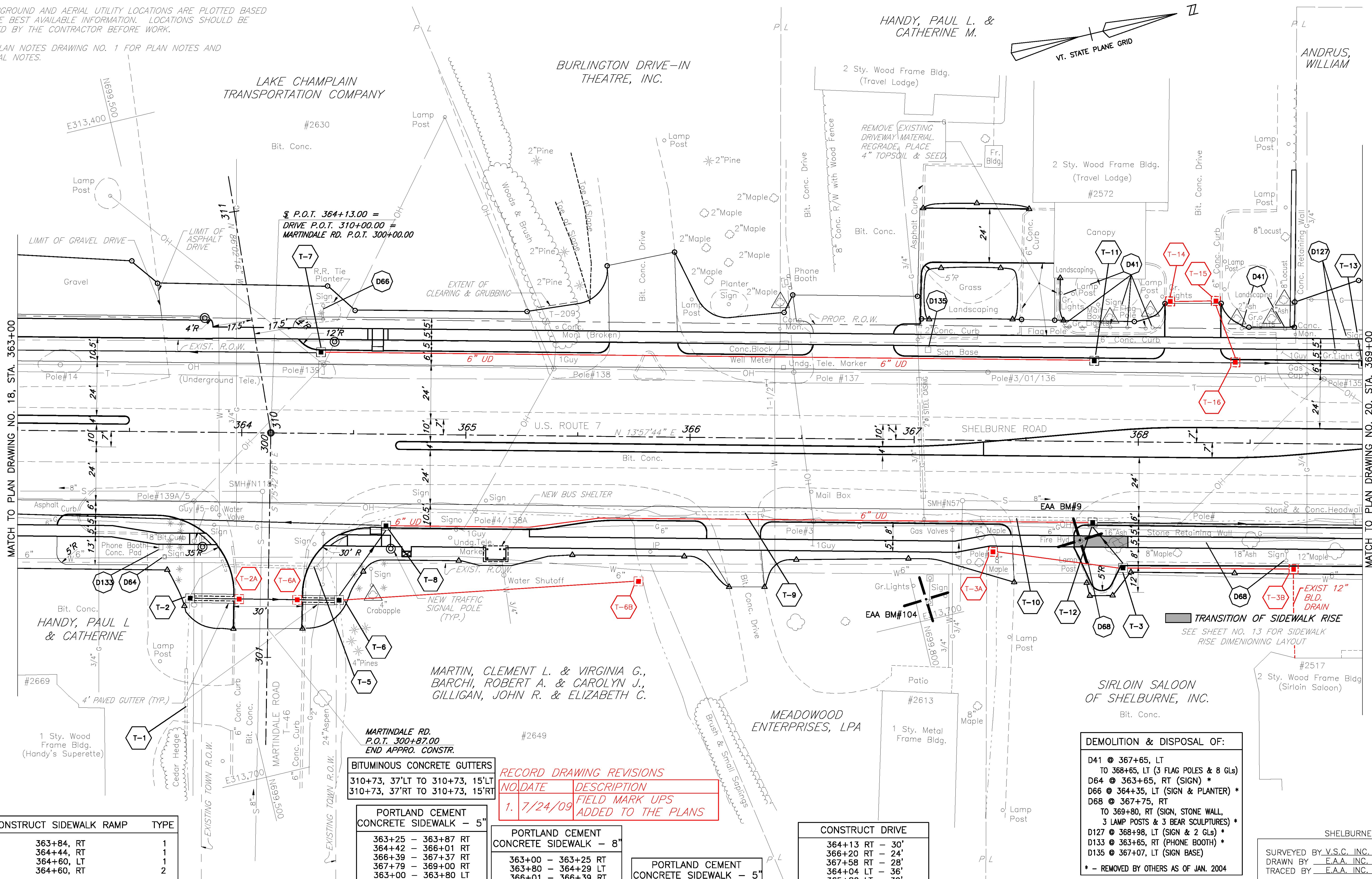


NOTES:

1. UNDERGROUND AND AERIAL UTILITY LOCATIONS ARE PLOTTED BASED ON THE BEST AVAILABLE INFORMATION. LOCATIONS SHOULD BE VERIFIED BY THE CONTRACTOR BEFORE WORK.
2. SEE PLAN NOTES DRAWING NO. 1 FOR PLAN NOTES AND GENERAL NOTES.



CONSTRUCT SIDEWALK RAMP	TYPE
363+84, RT	1
364+44, RT	1
364+60, LT	1
364+60, RT	2

CONSTRUCT APPROACH
MARTINDALE ROAD 364+13.00 RT

BITUMINOUS CONCRETE GUTTERS

310+73, 37'LT TO 310+73, 15'LT
310+73, 37'RT TO 310+73, 15'RT

PORTLAND CEMENT CONCRETE SIDEWALK - 5"

363+25 - 363+87 RT
364+42 - 366+01 RT
366+39 - 367+37 RT
367+79 - 369+00 RT
363+00 - 363+80 LT
364+29 - 365+58 LT
366+02 - 366+48 LT
366+97 - 368+05 LT
368+44 - 369+00 LT

RECORD DRAWING REVISIONS

NO.	DATE	DESCRIPTION
1.	7/24/09	FIELD MARK UPS ADDED TO THE PLANS

PORTLAND CEMENT CONCRETE SIDEWALK - 8"

363+00 - 363+25 RT
363+80 - 364+29 LT
366+01 - 366+39 RT
367+37 - 367+79 RT
365+58 - 366+02 LT
366+48 - 366+97 LT
368+05 - 368+44 LT

PORTLAND CEMENT CONCRETE SIDEWALK - 5" (MEDIAN WIDTH 4-6 FT.)

363+00 TO 363+50
364+69 TO 367+31

CONSTRUCT DRIVE

364+13 RT - 30'
366+20 RT - 24'
367+58 RT - 28'
364+04 LT - 36'
365+80 LT - 30'
366+72 LT - 35'
368+25 LT - 24'

DEMOLITION & DISPOSAL OF:

- D41 @ 367+65, LT TO 368+65, LT (3 FLAG POLES & 8 GLS)
- D64 @ 363+65, RT (SIGN) *
- D66 @ 364+35, LT (SIGN & PLANTER) *
- D68 @ 367+75, RT TO 369+80, RT (SIGN, STONE WALL, 3 LAMP POSTS & 3 BEAR SCULPTURES) *
- D127 @ 368+98, LT (SIGN & 2 GLS) *
- D133 @ 363+65, RT (PHONE BOOTH) *
- D135 @ 367+07, LT (SIGN BASE)

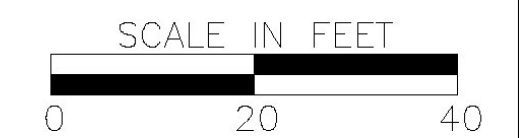
* - REMOVED BY OTHERS AS OF JAN. 2004

SHELBURNE
SURVEYED BY V.S.C. INC. DATE _____
DRAWN BY E.A.A. INC. DATE _____
TRACED BY E.A.A. INC. DATE _____

DATUM
VERTICAL NGVD 1929
HORIZONTAL NAD 1927

FOR PROFILE SEE PROFILE DRAWING NO. 21

7/20/04



PROJECT NH-EGC-019-4(27)
PLAN DRAWING NO. 19
SHEET NO. 122 OF 537