

PORTLAND CEMENT  
CONCRETE SIDEWALK - 5"  
(MEDIAN WIDTH 4-6 FT.)  
361+35 TO 363+00

CURVE NO. C5  
MAINLINE (U.S. ROUTE 7)  
P.I. STA. 356+06.22  
Δ = 00° 23' 00"  
D = 00' 10' 00"  
R = 34377.48' (CHORD DEF.)  
L = 230.00'  
T = 115.00'  
E = 0.19'  
P.C. STA. 354+91.22  
P.T. STA. 357+21.22

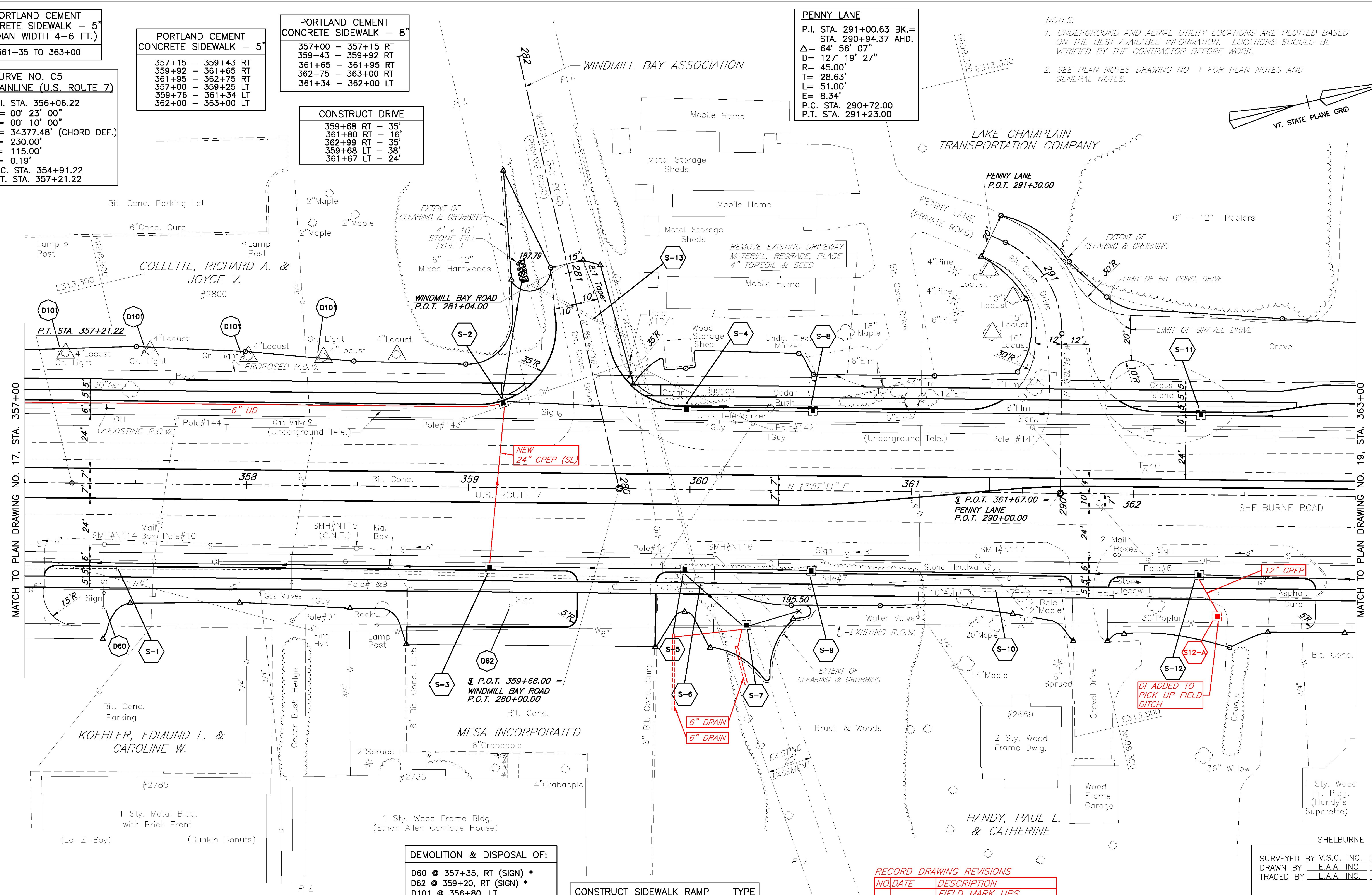
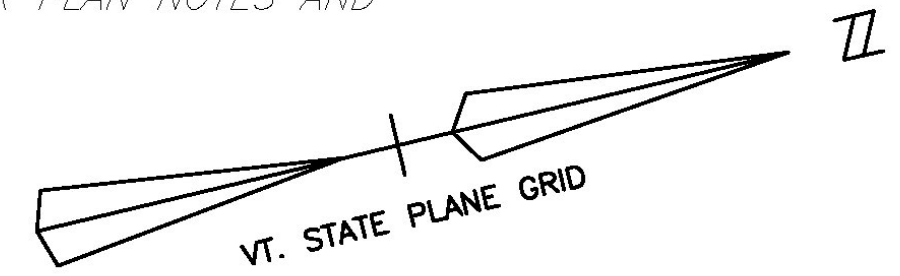
PORTLAND CEMENT  
CONCRETE SIDEWALK - 5"  
357+15 - 359+43 RT  
359+92 - 361+65 RT  
361+95 - 362+75 RT  
357+00 - 359+25 LT  
359+76 - 361+34 LT  
362+00 - 363+00 LT

PORTLAND CEMENT  
CONCRETE SIDEWALK - 8"  
357+00 - 357+15 RT  
359+43 - 359+92 RT  
361+65 - 361+95 RT  
362+75 - 363+00 RT  
361+34 - 362+00 LT

CONSTRUCT DRIVE  
359+68 RT - 35'  
361+80 RT - 16'  
362+99 RT - 35'  
359+68 LT - 38'  
361+67 LT - 24'

PENNY LANE  
P.I. STA. 291+00.63 BK.=  
STA. 290+94.37 AHD.  
Δ = 64° 56' 07"  
D = 127' 19' 27"  
R = 45.00'  
T = 28.63'  
L = 51.00'  
E = 8.34'  
P.C. STA. 290+72.00  
P.T. STA. 291+23.00

NOTES:  
1. UNDERGROUND AND AERIAL UTILITY LOCATIONS ARE PLOTTED BASED ON THE BEST AVAILABLE INFORMATION. LOCATIONS SHOULD BE VERIFIED BY THE CONTRACTOR BEFORE WORK.  
2. SEE PLAN NOTES DRAWING NO. 1 FOR PLAN NOTES AND GENERAL NOTES.



DEMOLITION & DISPOSAL OF:  
D60 @ 357+35, RT (SIGN) \*  
D62 @ 359+20, RT (SIGN) \*  
D101 @ 356+80, LT  
TO 358+30 LT (5 GLs)  
\* - REMOVED BY OTHERS AS OF JAN. 2004

CONSTRUCT SIDEWALK RAMP	TYPE
359+22, LT	1
359+80, LT	1

RECORD DRAWING REVISIONS

NO	DATE	DESCRIPTION
1.	7/24/09	FIELD MARK UPS ADDED TO THE PLANS

DATUM  
VERTICAL NGVD 1929  
HORIZONTAL NAD 1927

SURVEYED BY V.S.C. INC. DATE \_\_\_\_\_  
DRAWN BY E.A.A. INC. DATE \_\_\_\_\_  
TRACED BY E.A.A. INC. DATE \_\_\_\_\_

PROJECT NH-EGC-019-4(27)  
PLAN DRAWING NO. 18  
SHEET NO. 121 OF 537



FOR PROFILE SEE PROFILE DRAWING NO. 20 7/20/04