

HANDY, GABRIEL G., Trustee
DDH - GSH TRUST

SPILLANE, LOWELL T. & SUSAN G.

BLANCHARD,
JOHN C.

TAMARACK ROAD
P.O.T. 191+30.00

§ P.O.T. 341+87.82
TAMARACK ROAD
P.O.T. 190+00.00

BOND, SCOTT W. & CRAIG J.

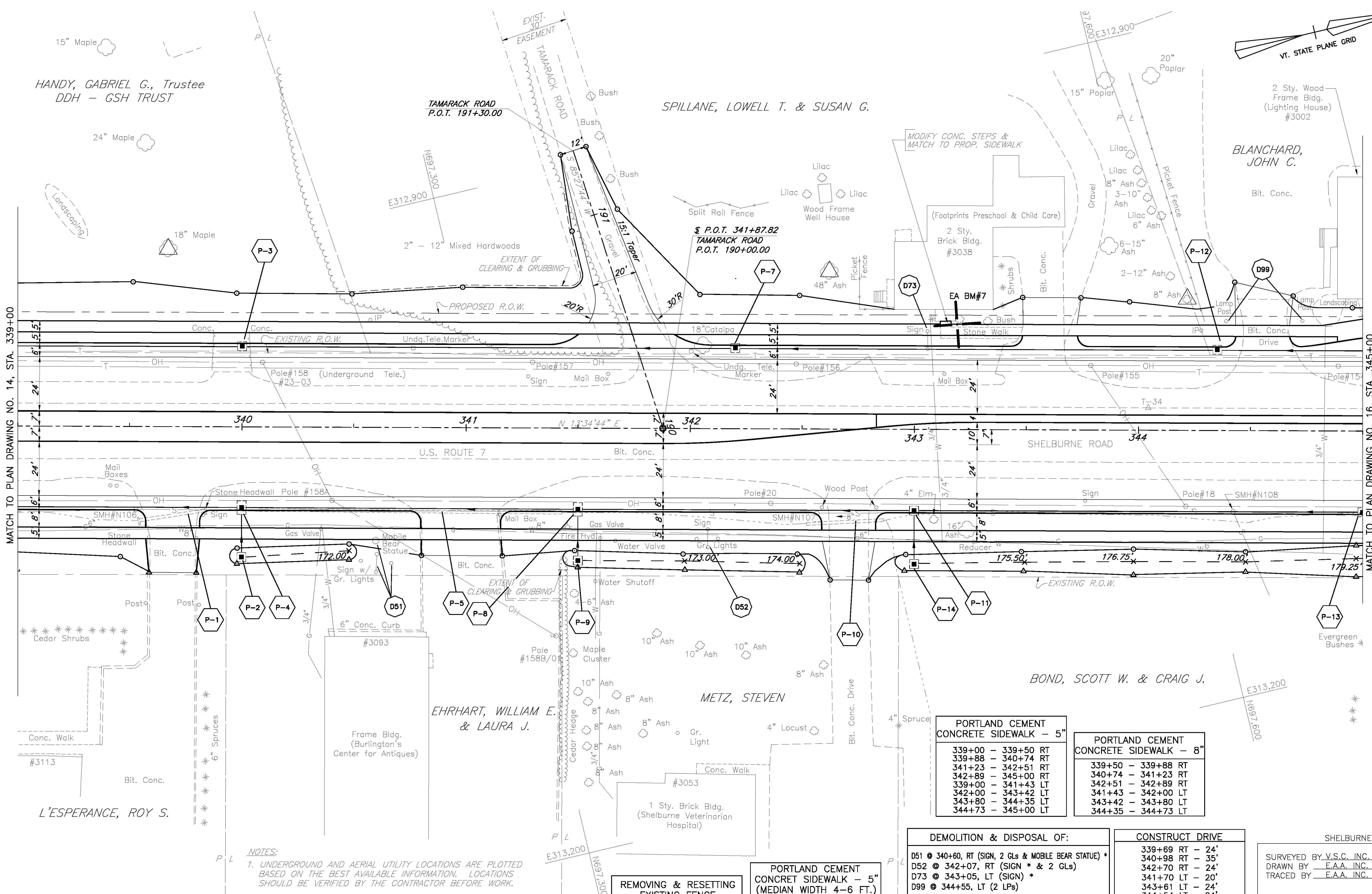
EHRHART, WILLIAM E.
& LAURA J.

METZ, STEVEN

L'ESPERANCE, ROY S.

MATCH TO PLAN DRAWING NO. 14, STA. 339+00

MATCH TO PLAN DRAWING NO. 16, STA. 345+00



PORTLAND CEMENT CONCRETE SIDEWALK - 5"	
339+00 - 339+50	RT
339+88 - 340+74	RT
341+23 - 342+51	RT
342+89 - 345+00	RT
339+00 - 341+43	LT
342+00 - 343+42	LT
343+80 - 344+35	LT
344+73 - 345+00	LT

PORTLAND CEMENT CONCRETE SIDEWALK - 8"	
339+50 - 339+88	RT
340+74 - 341+23	RT
342+51 - 342+89	RT
341+43 - 342+00	LT
343+42 - 343+80	LT
344+35 - 344+73	LT

DEMOLITION & DISPOSAL OF:	
D51 @ 340+60, RT (SIGN, 2 GLs & MOBILE BEAR STATUE) *	
D52 @ 342+07, RT (SIGN * & 2 GLs)	
D73 @ 343+05, LT (SIGN) *	
D99 @ 344+55, LT (2 LPs)	
* - REMOVED BY OTHERS AS OF JAN. 2004	

CONSTRUCT DRIVE	
339+69	RT - 24'
340+98	RT - 35'
342+70	RT - 24'
341+70	LT - 20'
343+61	LT - 24'
344+54	LT - 24'

REMOVING & RESETTING
EXISTING FENCE
342+76, LT. TO 342+91, LT.

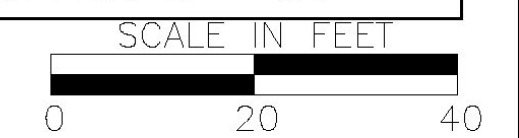
PORTLAND CEMENT
CONCRETE SIDEWALK - 5"
(MEDIAN WIDTH 4-6 FT.)
342+83 TO 345+00

- NOTES:**
- UNDERGROUND AND AERIAL UTILITY LOCATIONS ARE PLOTTED BASED ON THE BEST AVAILABLE INFORMATION. LOCATIONS SHOULD BE VERIFIED BY THE CONTRACTOR BEFORE WORK.
 - SEE PLAN NOTES DRAWING NO. 1 FOR PLAN NOTES AND GENERAL NOTES.

DATUM
VERTICAL NGVD 1929
HORIZONTAL NAD 1927

FOR PROFILE SEE PROFILE DRAWING NO. 1E

7/20/04



SHELBURNE
SURVEYED BY V.S.C. INC. DATE _____
DRAWN BY E.A.A. INC. DATE _____
TRACED BY E.A.A. INC. DATE _____
PROJECT NH-EGC-019-4(27)
PLAN DRAWING NO. 15
SHEET NO. 118 OF 537