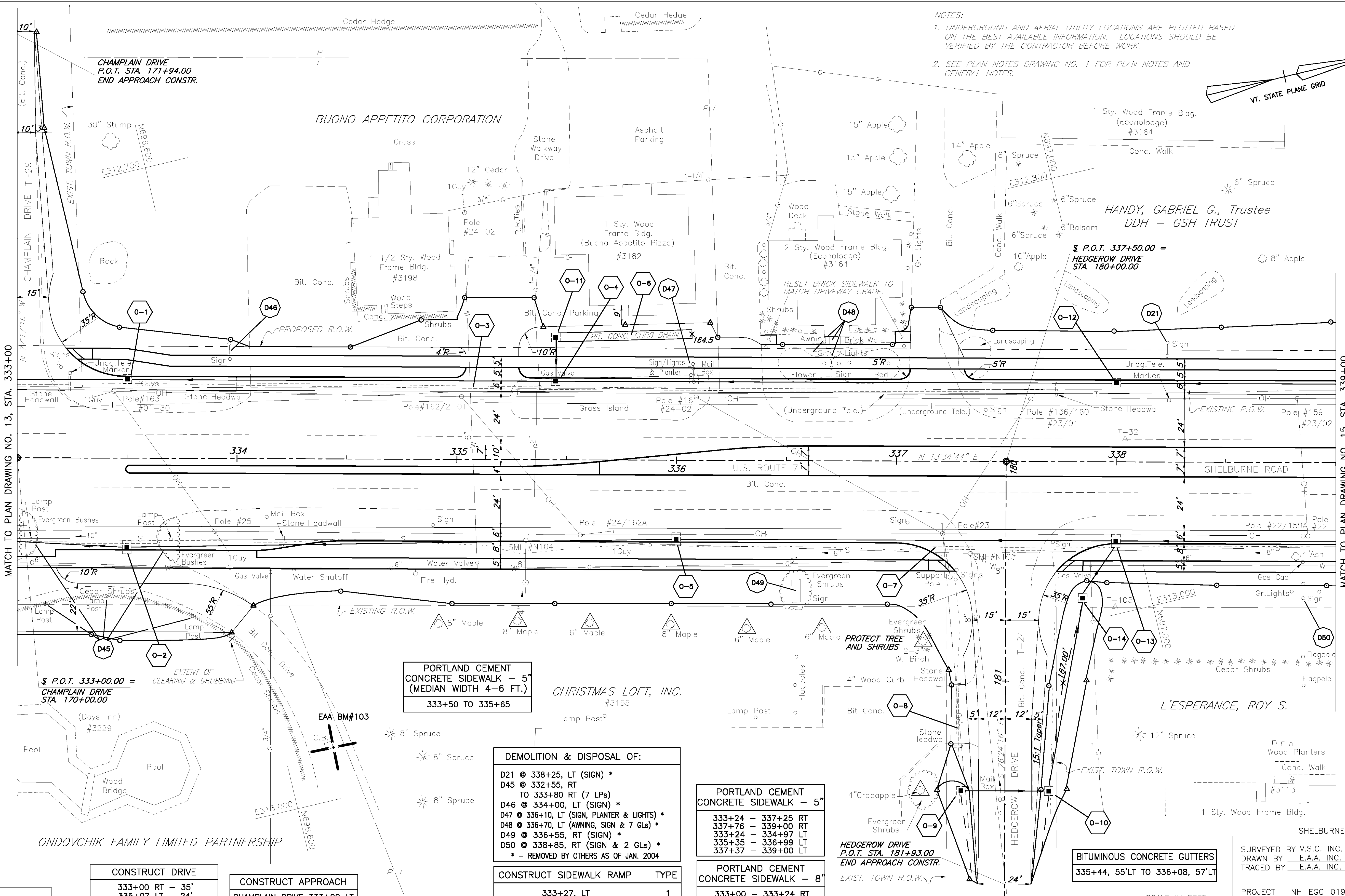
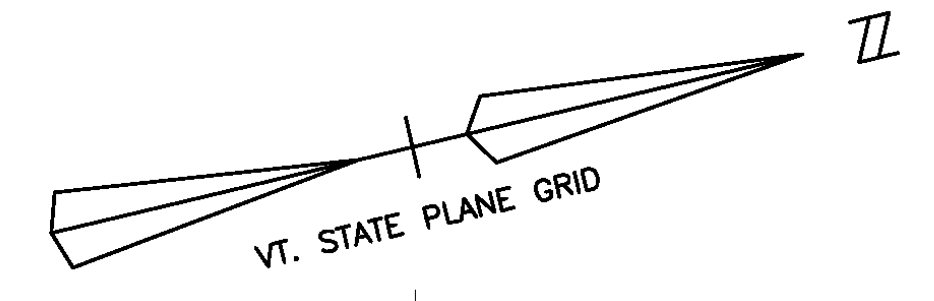


NOTES:
 1. UNDERGROUND AND AERIAL UTILITY LOCATIONS ARE PLOTTED BASED ON THE BEST AVAILABLE INFORMATION. LOCATIONS SHOULD BE VERIFIED BY THE CONTRACTOR BEFORE WORK.
 2. SEE PLAN NOTES DRAWING NO. 1 FOR PLAN NOTES AND GENERAL NOTES.



DATUM
 VERTICAL NGVD 1929
 HORIZONTAL NAD 1927

CONSTRUCT DRIVE	
333+00 RT	- 35'
335+07 LT	- 24'
337+18 LT	- 24'
HEDGEROW 181+15 RT	- 26'

CONSTRUCT APPROACH	
CHAMPLAIN DRIVE 333+00 LT	
HEDGEROW DRIVE 337+50 RT	

PORTLAND CEMENT CONCRETE SIDEWALK - 5" (MEDIAN WIDTH 4-6 FT.)
 333+50 TO 335+65

DEMOLITION & DISPOSAL OF:	
D21 @ 338+25, LT (SIGN) *	
D45 @ 332+80 RT (7 LPs) TO 333+80 RT (7 LPs)	
D46 @ 334+00, LT (SIGN) *	
D47 @ 336+10, LT (SIGN, PLANTER & LIGHTS) *	
D48 @ 336+70, LT (AWNING, SIGN & 7 GLs) *	
D49 @ 336+55, RT (SIGN) *	
D50 @ 338+85, RT (SIGN & 2 GLs) *	
* - REMOVED BY OTHERS AS OF JAN. 2004	

CONSTRUCT SIDEWALK RAMP	TYPE
333+27, LT	1
337+22, RT	1
337+78, RT	1

PORTLAND CEMENT CONCRETE SIDEWALK - 5"	
333+24 - 337+25 RT	
337+76 - 339+00 RT	
333+24 - 334+97 LT	
335+35 - 336+99 LT	
337+37 - 339+00 LT	

PORTLAND CEMENT CONCRETE SIDEWALK - 8"	
333+00 - 333+24 RT	
334+97 - 335+35 LT	
336+99 - 337+37 LT	

FOR PROFILE SEE PROFILE DRAWING NO. 1 7/20/04

BITUMINOUS CONCRETE GUTTERS
 335+44, 55'LT TO 336+08, 57'LT



SHELburne
 SURVEYED BY V.S.C. INC. DATE _____
 DRAWN BY E.A.A. INC. DATE _____
 TRACED BY E.A.A. INC. DATE _____
 PROJECT NH-EGC-019-4(27)
 PLAN DRAWING NO. 14
 SHEET NO. 117 OF 537