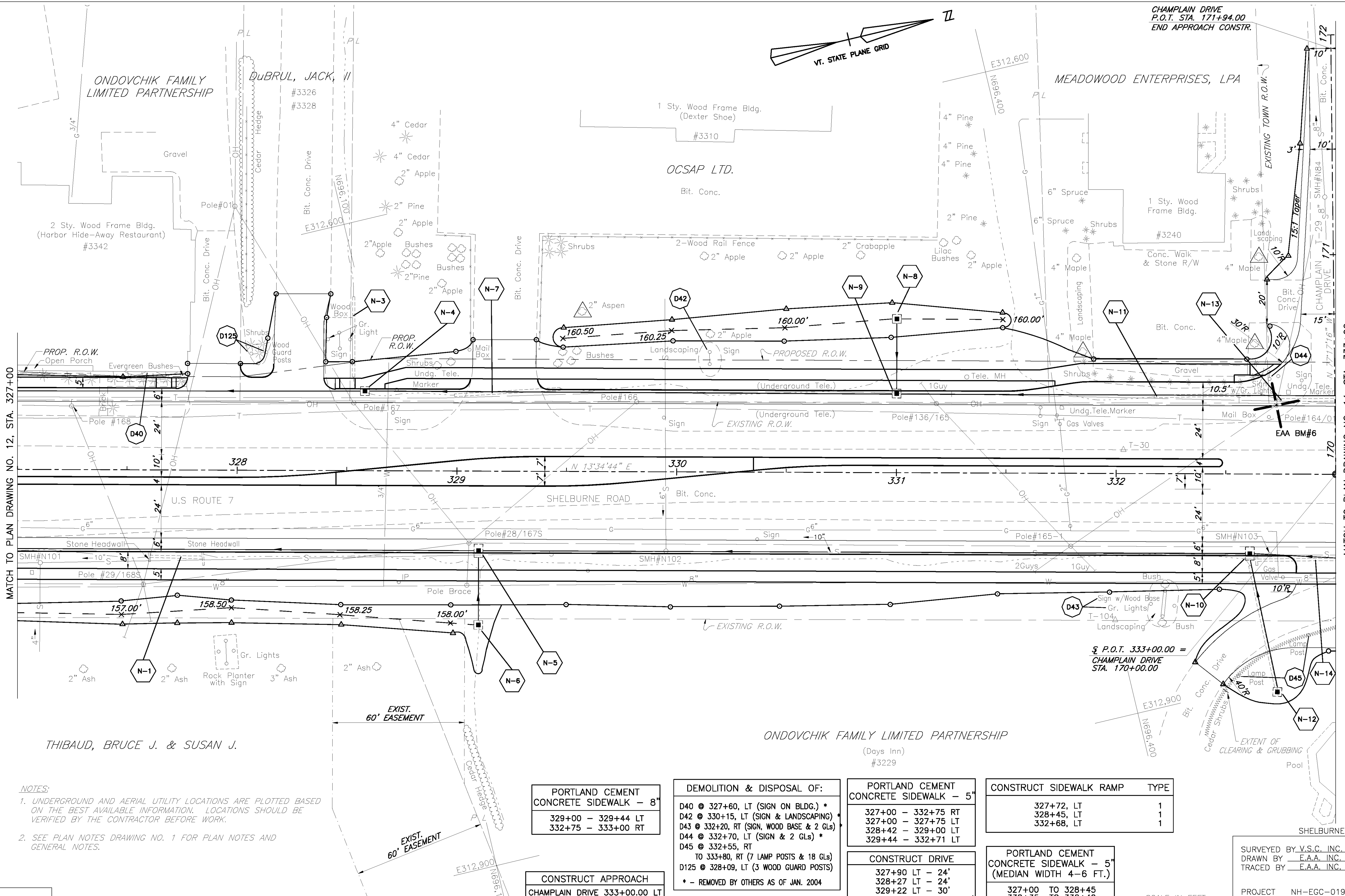


CHAMPLAIN DRIVE
P.O.T. STA. 171+94.00
END APPROACH CONSTR.



MATCH TO PLAN DRAWING NO. 12, STA. 327+00

MATCH TO PLAN DRAWING NO. 14, STA. 333+00

NOTES:
 1. UNDERGROUND AND AERIAL UTILITY LOCATIONS ARE PLOTTED BASED ON THE BEST AVAILABLE INFORMATION. LOCATIONS SHOULD BE VERIFIED BY THE CONTRACTOR BEFORE WORK.
 2. SEE PLAN NOTES DRAWING NO. 1 FOR PLAN NOTES AND GENERAL NOTES.

PORTLAND CEMENT
CONCRETE SIDEWALK - 8"
 329+00 - 329+44 LT
 332+75 - 333+00 RT

CONSTRUCT APPROACH
CHAMPLAIN DRIVE 333+00.00 LT

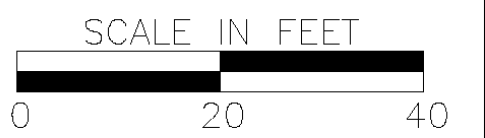
DEMOLITION & DISPOSAL OF:
 D40 @ 327+60, LT (SIGN ON BLDG.) *
 D42 @ 330+15, LT (SIGN & LANDSCAPING) *
 D43 @ 332+20, RT (SIGN, WOOD BASE & 2 GLs) *
 D44 @ 332+70, LT (SIGN & 2 GLs) *
 D45 @ 332+55, RT
 TO 333+80, RT (7 LAMP POSTS & 18 GLs)
 D125 @ 328+09, LT (3 WOOD GUARD POSTS)
 * - REMOVED BY OTHERS AS OF JAN. 2004

PORTLAND CEMENT
CONCRETE SIDEWALK - 5"
 327+00 - 332+75 RT
 327+00 - 327+75 LT
 328+42 - 329+00 LT
 329+44 - 332+71 LT

CONSTRUCT DRIVE
 327+90 LT - 24'
 328+27 LT - 24'
 329+22 LT - 30'
 CHAMPLAIN 170+78 LT - 20'

CONSTRUCT SIDEWALK RAMP	TYPE
327+72, LT	1
328+45, LT	1
332+68, LT	1

PORTLAND CEMENT
CONCRETE SIDEWALK - 5"
(MEDIAN WIDTH 4-6 FT.)
 327+00 TO 328+45
 330+35 TO 332+49



DATUM
VERTICAL NGVD 1929
HORIZONTAL NAD 1927

SURVEYED BY V.S.C. INC. DATE _____
 DRAWN BY E.A.A. INC. DATE _____
 TRACED BY E.A.A. INC. DATE _____
 PROJECT NH-EGC-019-4(27)
 PLAN DRAWING NO. 13
 SHEET NO. 116 OF 537