

**DEMOLITION & DISPOSAL OF:**  
 D37 @ 324+45, RT (SIGN & PLANTER) \*  
 D38 @ 323+00, LT (BLDG. FOUNDATION)  
 D39 @ 325+00, LT  
 TO 325+65, LT (FENCE)  
 D120 @ 321+44, RT (STONE RET. WALL)  
 \* - REMOVED BY OTHERS AS OF JAN. 2004

**PORTLAND CEMENT CONCRETE SIDEWALK - 5"**  
 321+00 - 321+33 RT  
 321+63 - 322+75 RT  
 323+36 - 327+00 RT  
 321+00 - 322+53 LT  
 323+11 - 323+90 LT  
 324+82 - 325+56 LT  
 326+07 - 327+00 LT  
 EXECUTIVE DR. 130+60 - 131+20 RT  
 BAY ROAD SPUR 150+00 - 151+03 RT

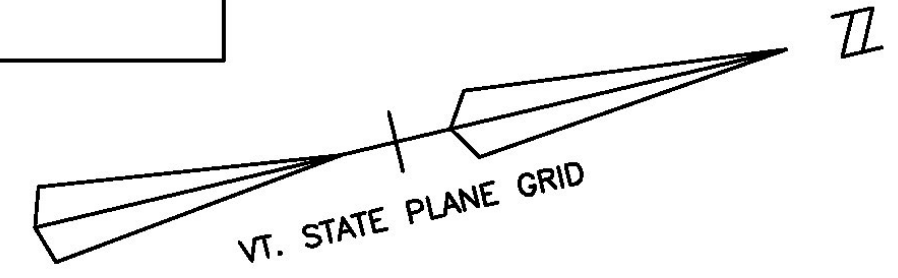
**CONSTRUCT SIDEWALK RAMP TYPE**

322+34, LT	2
322+51, LT	1
322+72, RT	1
323+12, LT	1
322+34, RT	2
323+39, RT	1
BAY ROAD SPUR 151+06, LT	2
BAY ROAD SPUR 151+04, RT	2

**HEAVY DUTY STEEL BEAM GUARDRAIL UNIT**  
 BAY RD. 151+72.5 TO 152+10.0 RT (M.E.L.T.)  
 BAY RD. 152+10.0 TO 141+78.0 RT (W/ WOOD POSTS)  
 BAY RD. 141+78.0 TO 142+15.5 RT (M.E.L.T.)  
 BAY RD. 141+50.0 LT (ANCHOR)  
 BAY RD. 141+50.0 TO 142+24.5 LT (W/ WOOD POSTS)  
 BAY RD. 142+24.5 TO 142+62.0 (M.E.L.T.)

**CONSTRUCT DRIVE**  
 321+48 RT - 16'  
 325+83 LT - 35'

**CONSTRUCT APPROACH**  
 EXECUTIVE DRIVE - 322+98.00 RT  
 BAY ROAD - 322+98.00 LT  
 BAY ROAD SPUR - 324+82.00 LT

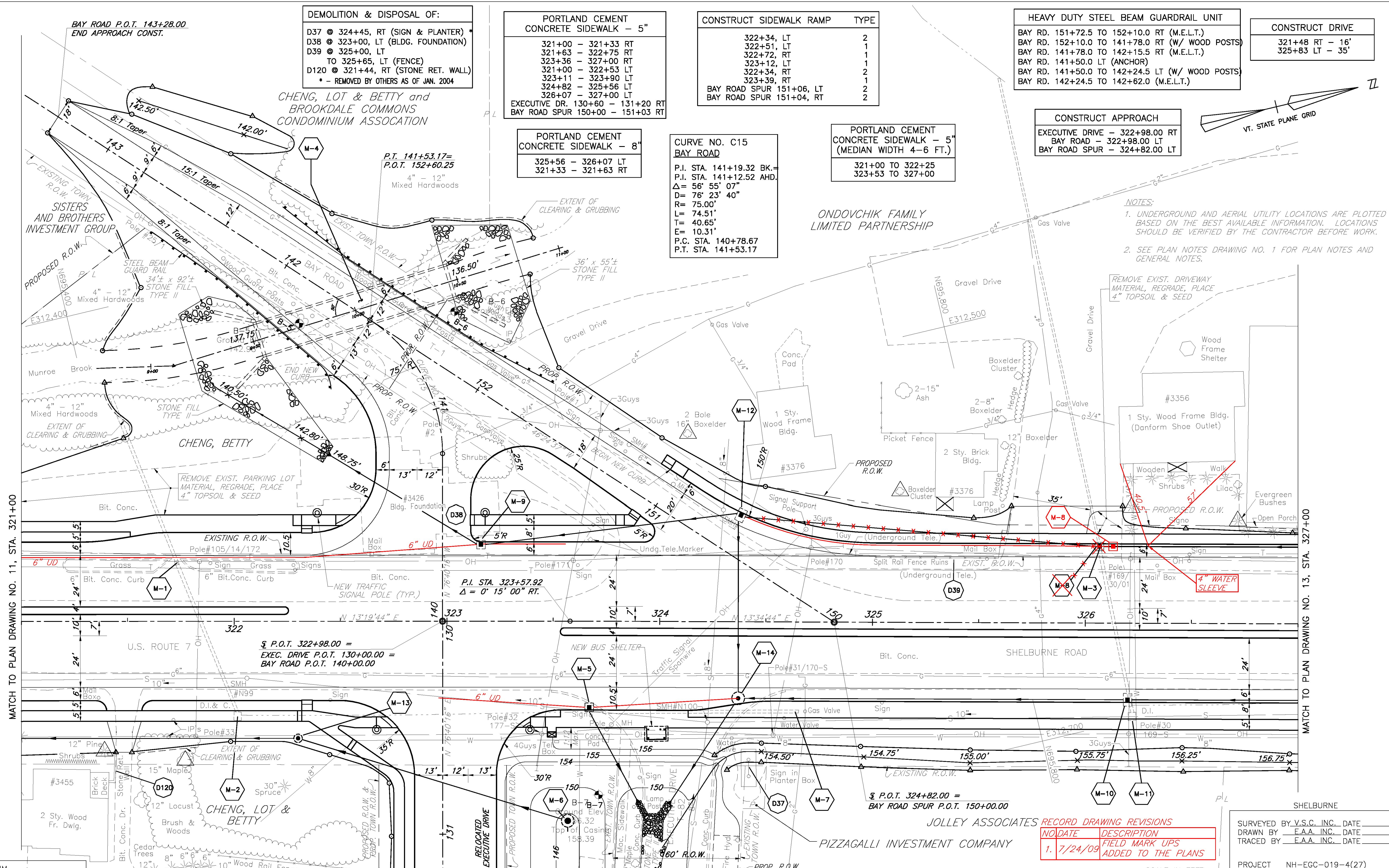


**PORTLAND CEMENT CONCRETE SIDEWALK - 8"**  
 325+56 - 326+07 LT  
 321+33 - 321+63 RT

**CURVE NO. C15 BAY ROAD**  
 P.I. STA. 141+19.32 BK.  
 P.I. STA. 141+12.52 AHD.  
 $\Delta = 56^\circ 55' 07''$   
 $D = 76^\circ 23' 40''$   
 $R = 75.00'$   
 $L = 74.51'$   
 $T = 40.65'$   
 $E = 10.31'$   
 P.C. STA. 140+78.67  
 P.T. STA. 141+53.17

**PORTLAND CEMENT CONCRETE SIDEWALK - 5"**  
 (MEDIAN WIDTH 4-6 FT.)  
 321+00 TO 322+25  
 323+53 TO 327+00

**NOTES:**  
 1. UNDERGROUND AND AERIAL UTILITY LOCATIONS ARE PLOTTED BASED ON THE BEST AVAILABLE INFORMATION. LOCATIONS SHOULD BE VERIFIED BY THE CONTRACTOR BEFORE WORK.  
 2. SEE PLAN NOTES DRAWING NO. 1 FOR PLAN NOTES AND GENERAL NOTES.



MATCH TO PLAN DRAWING NO. 11, STA. 321+00

MATCH TO PLAN DRAWING NO. 13, STA. 327+00

MATCH TO PLAN DRAWING NO. 23, STA. 131+20

DATUM  
 VERTICAL NGVD 1929  
 HORIZONTAL NAD 1927

FOR PROFILE SEE PROFILE DRAWING NO. 13

7/20/04

SCALE IN FEET  
 0 20 40

SURVEYED BY	V.S.C. INC.	DATE	
DRAWN BY	E.A.A. INC.	DATE	
TRACED BY	E.A.A. INC.	DATE	

NO.	DATE	DESCRIPTION
1.	7/24/09	FIELD MARK UPS ADDED TO THE PLANS

PROJECT NH-EGC-019-4(27)  
 PLAN DRAWING NO. 12  
 SHEET NO. 115 OF 537

JOLLEY ASSOCIATES RECORD DRAWING REVISIONS

PIZZAGALLI INVESTMENT COMPANY

SHELBURNE