

CONSTRUCT DRIVE
 317+40 - 319+13 LT - 24'
 317+64 LT - 24'
 318+90 LT - 24'

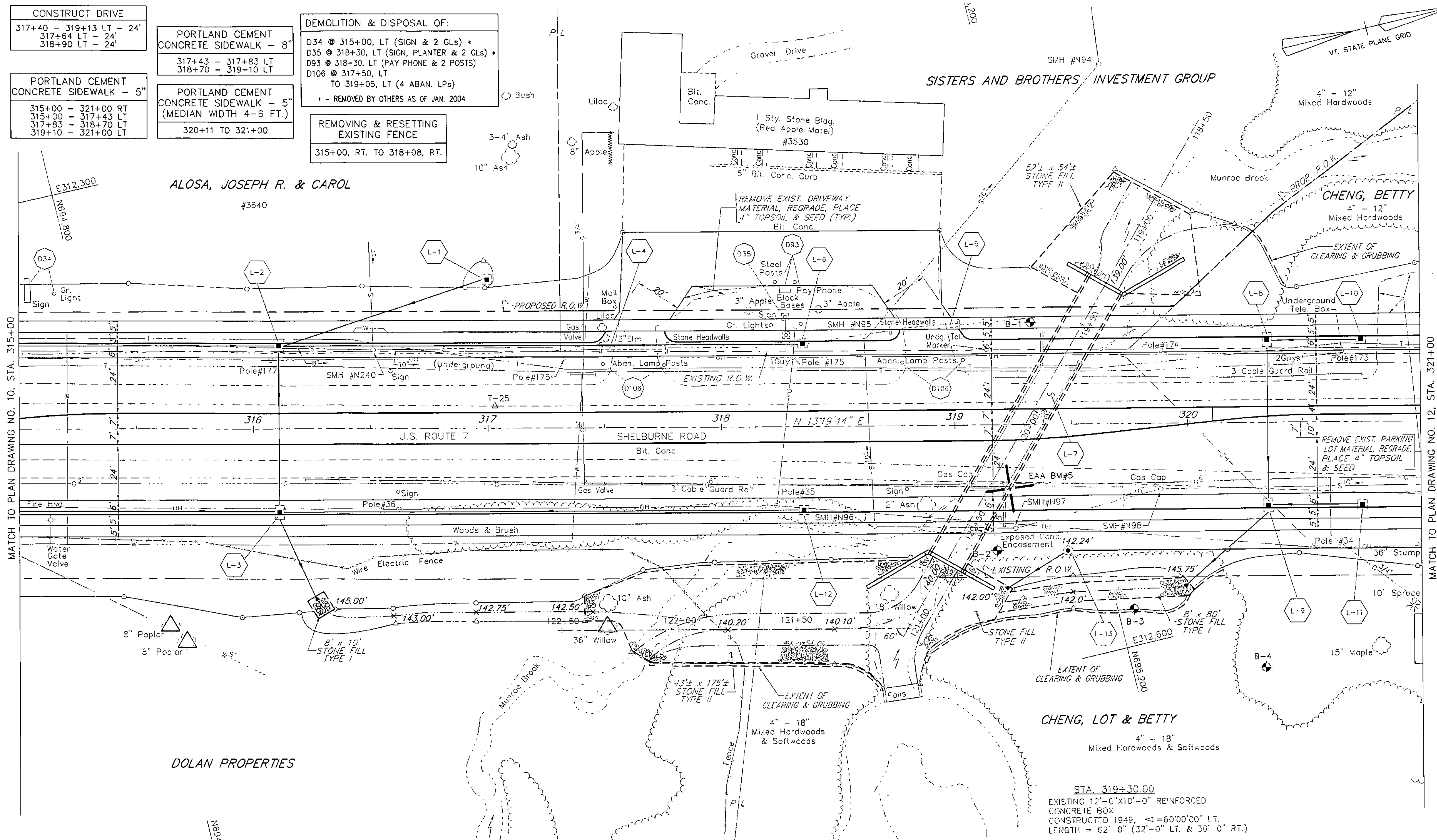
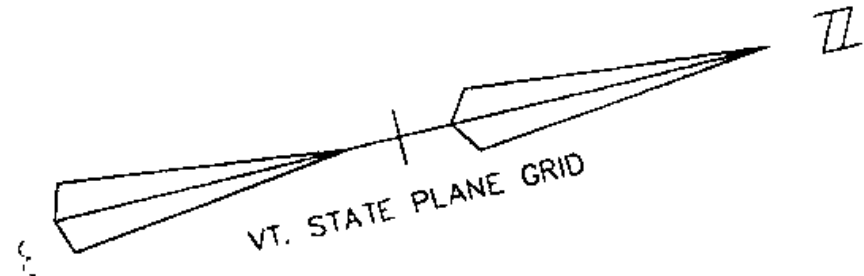
PORTLAND CEMENT
 CONCRETE SIDEWALK - 5"
 315+00 - 321+00 RT
 315+00 - 317+43 LT
 317+83 - 318+70 LT
 319+10 - 321+00 LT

PORTLAND CEMENT
 CONCRETE SIDEWALK - 8"
 317+43 - 317+83 LT
 318+70 - 319+10 LT

PORTLAND CEMENT
 CONCRETE SIDEWALK - 5"
 (MEDIAN WIDTH 4-6 FT.)
 320+11 TO 321+00

DEMOLITION & DISPOSAL OF:
 D34 @ 315+00, LT (SIGN & 2 GLs) +
 D35 @ 318+30, LT (SIGN, PLANTER & 2 GLs) +
 D93 @ 318+30, LT (PAY PHONE & 2 POSTS)
 D106 @ 317+50, LT
 TO 319+05, LT (4 ABAN. LPs)
 - - REMOVED BY OTHERS AS OF JAN. 2004

REMOVING & RESETTING
 EXISTING FENCE
 315+00, RT. TO 318+08, RT.



MATCH TO PLAN DRAWING NO. 10, STA. 315+00

MATCH TO PLAN DRAWING NO. 12, STA. 321+00

DOLAN PROPERTIES

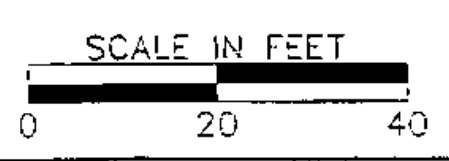
CHENG, LOT & BETTY
 4" - 18"
 Mixed Hardwoods & Softwoods

STA. 319+30.00
 EXISTING 12'-0"X10'-0" REINFORCED
 CONCRETE BOX
 CONSTRUCTED 1949, $\pm 60'00''$ LT.
 LENGTH = 62' 0" (32'-0" LT. & 30' 0" RT.)

- NOTES:
- UNDERGROUND AND AERIAL UTILITY LOCATIONS ARE PLOTTED BASED ON THE BEST AVAILABLE INFORMATION. LOCATIONS SHOULD BE VERIFIED BY THE CONTRACTOR BEFORE WORK.
 - SEE PLAN NOTES DRAWING NO. 1 FOR PLAN NOTES AND GENERAL NOTES.

DATUM
 VERTICAL NGVD 1929
 HORIZONTAL NAD 1927

FOR PROFILE SEE PROFILE DRAWING NO. 12 4/13/04



SHELBURNE
 SURVEYED BY V.S.C. INC. DATE _____
 DRAWN BY E.A.A. INC. DATE _____
 TRACED BY E.A.A. INC. DATE _____
 PROJECT NH-EGC-019-4(27)
 PLAN DRAWING NO. 11
 SHEET NO. 114 OF 537