

CONSTRUCT SIDEWALK RAMP	TYPE
304+81, LT	1
305+32, LT	1

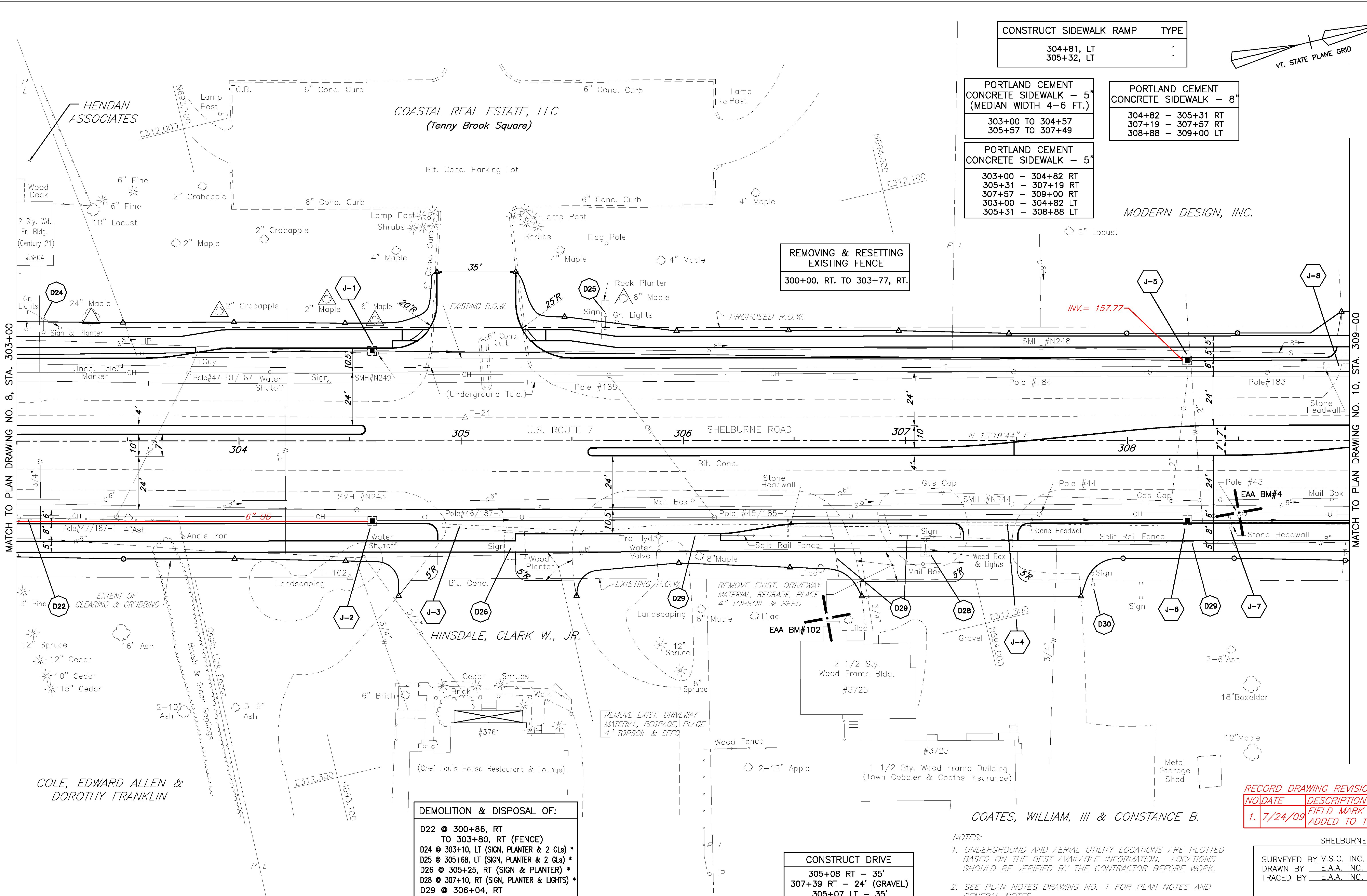
PORTLAND CEMENT CONCRETE SIDEWALK - 5" (MEDIAN WIDTH 4-6 FT.)
303+00 TO 304+57
305+57 TO 307+49

PORTLAND CEMENT CONCRETE SIDEWALK - 8"
304+82 - 305+31 RT
307+19 - 307+57 RT
308+88 - 309+00 LT

PORTLAND CEMENT CONCRETE SIDEWALK - 5"
303+00 - 304+82 RT
305+31 - 307+19 RT
307+57 - 309+00 RT
303+00 - 304+82 LT
305+31 - 308+88 LT

MODERN DESIGN, INC.

REMOVING & RESETTING EXISTING FENCE
300+00, RT. TO 303+77, RT.



MATCH TO PLAN DRAWING NO. 8, STA. 303+00

MATCH TO PLAN DRAWING NO. 10, STA. 309+00

COLE, EDWARD ALLEN & DOROTHY FRANKLIN

DEMOLITION & DISPOSAL OF:

- D22 @ 300+86, RT TO 303+80, RT (FENCE)
- D24 @ 303+10, LT (SIGN, PLANTER & 2 GLs) *
- D25 @ 305+68, LT (SIGN, PLANTER & 2 GLs) *
- D26 @ 305+25, RT (SIGN & PLANTER) *
- D28 @ 307+10, RT (SIGN, PLANTER & LIGHTS) *
- D29 @ 306+04, RT TO 308+50, RT (FENCE)
- D30 @ 307+85, RT (SIGN) *

* - REMOVED BY OTHERS AS OF JAN. 2004

CONSTRUCT DRIVE

- 305+08 RT - 35'
- 307+39 RT - 24' (GRAVEL)
- 305+07 LT - 35'

RECORD DRAWING REVISIONS		
NO.	DATE	DESCRIPTION
1.	7/24/09	FIELD MARK UPS ADDED TO THE PLANS

NOTES:

- UNDERGROUND AND AERIAL UTILITY LOCATIONS ARE PLOTTED BASED ON THE BEST AVAILABLE INFORMATION. LOCATIONS SHOULD BE VERIFIED BY THE CONTRACTOR BEFORE WORK.
- SEE PLAN NOTES DRAWING NO. 1 FOR PLAN NOTES AND GENERAL NOTES.

SHELburne

SURVEYED BY V.S.C. INC. DATE _____
 DRAWN BY E.A.A. INC. DATE _____
 TRACED BY E.A.A. INC. DATE _____

PROJECT NH-EGC-019-4(27)
 PLAN DRAWING NO. 9
 SHEET NO. 112 OF 537

DATUM
 VERTICAL NGVD 1929
 HORIZONTAL NAD 1927

FOR PROFILE SEE PROFILE DRAWING NO. 10 7/20/04

