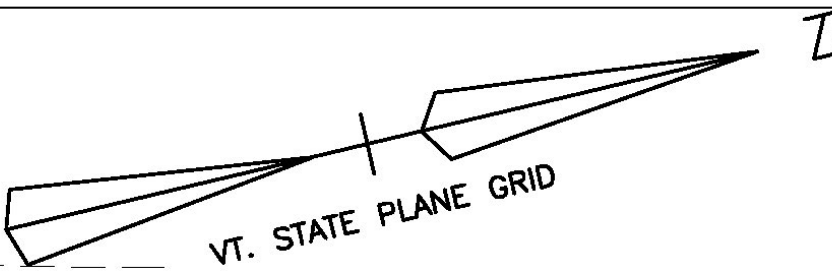


PORTLAND CEMENT
CONCRETE SIDEWALK -8"
287+72 - 288+19 RT

CONSTRUCT APPROACH
LONGMEADOW DR. 286+00.00 RT



PORTLAND CEMENT
CONCRETE SIDEWALK - 5"
285+00 - 285+78 RT
286+45 - 287+72 RT
288+19 - 291+00 RT
285+00 - 285+74 LT
286+36 - 289+90 LT
290+57 - 291+00 LT

**CURVE NO. C7
LONGMEADOW DRIVE**
P.I. STA. 41+05.22 BK.=
STA. 41+03.51 AHD.
Δ= 23° 10' 20"
D= 18° 47' 09"
R= 305.00'
L= 123.35'
T= 62.53'
E= 6.34'
P.C. STA. 40+24.69
P.T. STA. 44+66.04

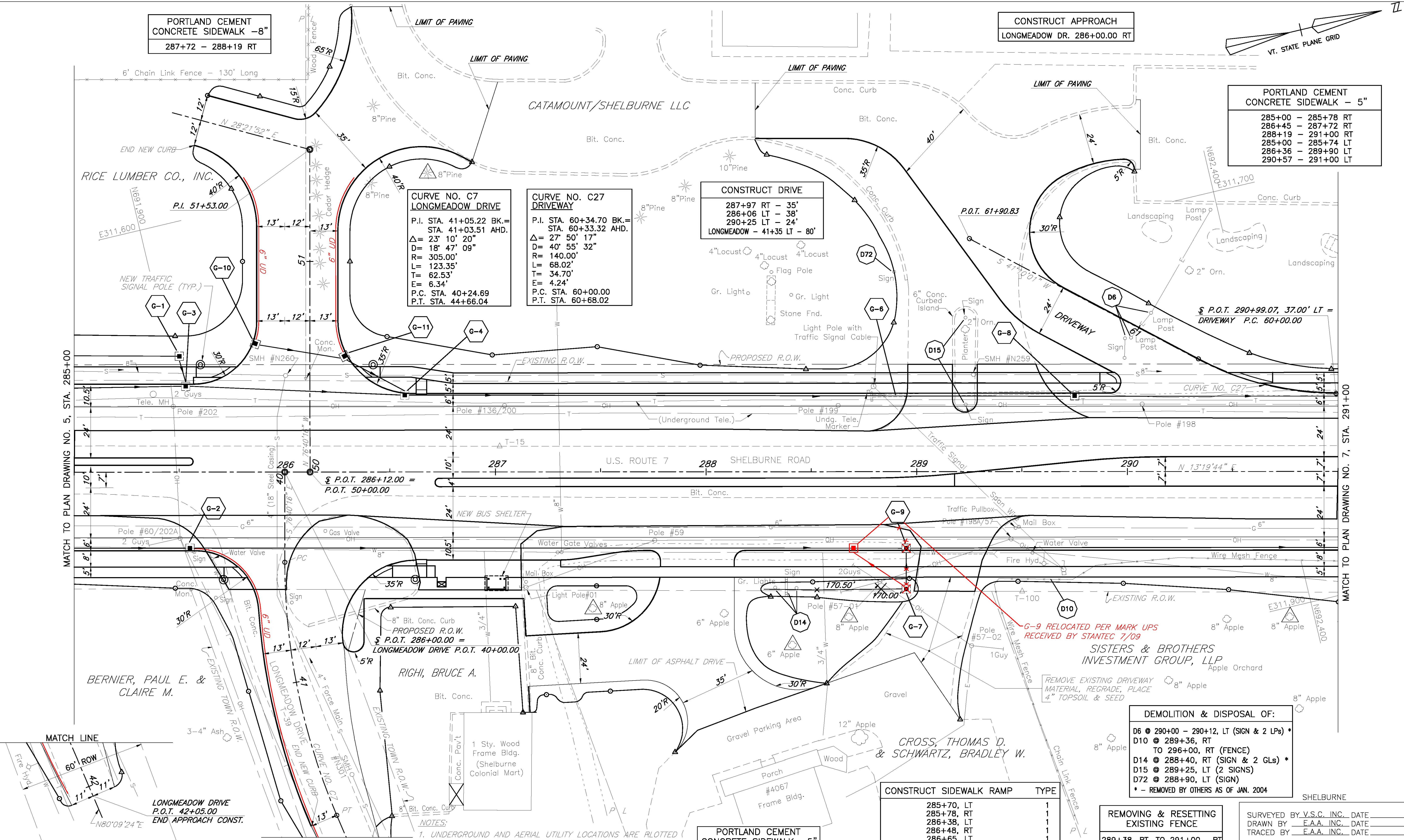
**CURVE NO. C27
DRIVEWAY**
P.I. STA. 60+34.70 BK.=
STA. 60+33.32 AHD.
Δ= 27° 50' 17"
D= 40° 55' 32"
R= 140.00'
L= 68.02'
T= 34.70'
E= 4.24'
P.C. STA. 60+00.00
P.T. STA. 60+68.02

CONSTRUCT DRIVE
287+97 RT - 35'
286+06 LT - 38'
290+25 LT - 24'
LONGMEADOW - 41+35 LT - 80'

§ P.O.T. 290+99.07, 37.00' LT =
DRIVEWAY P.C. 60+00.00

MATCH TO PLAN DRAWING NO. 5, STA. 285+00

MATCH TO PLAN DRAWING NO. 7, STA. 291+00



RECORD DRAWING REVISIONS

NO	DATE	DESCRIPTION
1.	7/24/09	FIELD MARK UPS ADDED TO THE PLANS

- NOTES:**
- UNDERGROUND AND AERIAL UTILITY LOCATIONS ARE PLOTTED BASED ON THE BEST AVAILABLE INFORMATION. LOCATIONS SHOULD BE VERIFIED BY THE CONTRACTOR BEFORE WORK.
 - SEE PLAN NOTES DRAWING NO. 1 FOR PLAN NOTES AND GENERAL NOTES.

PORTLAND CEMENT
CONCRETE SIDEWALK -5"
(MEDIAN WIDTH 4-6 FT.)
285+00 TO 285+57
286+71 TO 289+13

CONSTRUCT SIDEWALK RAMP

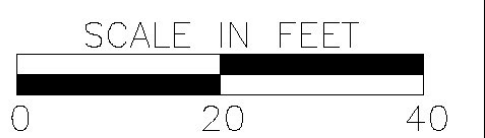
TYPE	TYPE
285+70, LT	1
285+78, RT	1
286+38, LT	1
286+48, RT	1
286+65, LT	1
286+65, RT	2
286+94, LT	1
290+62, LT	1

**REMOVING & RESETTING
EXISTING FENCE**
289+38, RT. TO 291+00, RT

DEMOLITION & DISPOSAL OF:

- D6 @ 290+00 - 290+12, LT (SIGN & 2 LPs) *
- D10 @ 289+36, RT TO 296+00, RT (FENCE)
- D14 @ 288+40, RT (SIGN & 2 GLs) *
- D15 @ 289+25, LT (2 SIGNS)
- D72 @ 288+90, LT (SIGN)

* - REMOVED BY OTHERS AS OF JAN. 2004



DATUM
VERTICAL NGVD 1929
HORIZONTAL NAD 1927

SHELBURNE

SURVEYED BY V.S.C. INC. DATE _____
DRAWN BY E.A.A. INC. DATE _____
TRACED BY E.A.A. INC. DATE _____

PROJECT NH-EGC-019-4(27)
PLAN DRAWING NO. 6
SHEET NO. 109 OF 537

FOR PROFILE SEE PROFILE DRAWING NO. 7

7/20/04