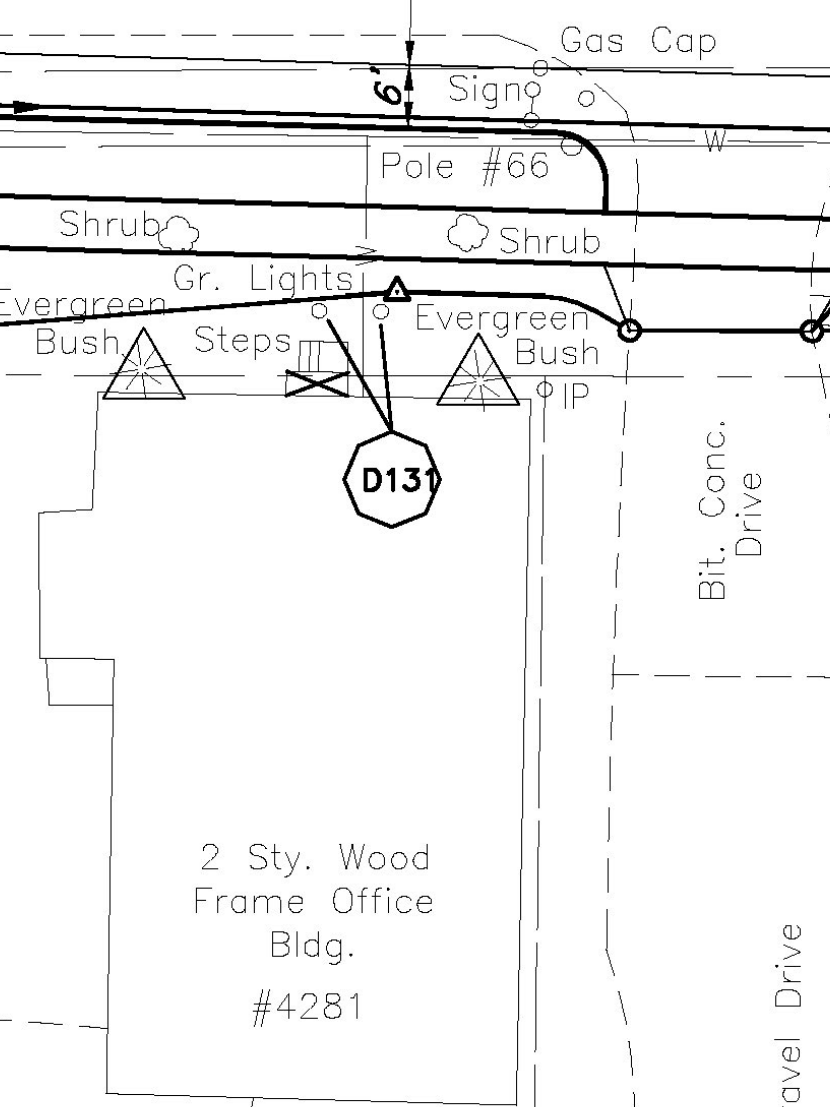
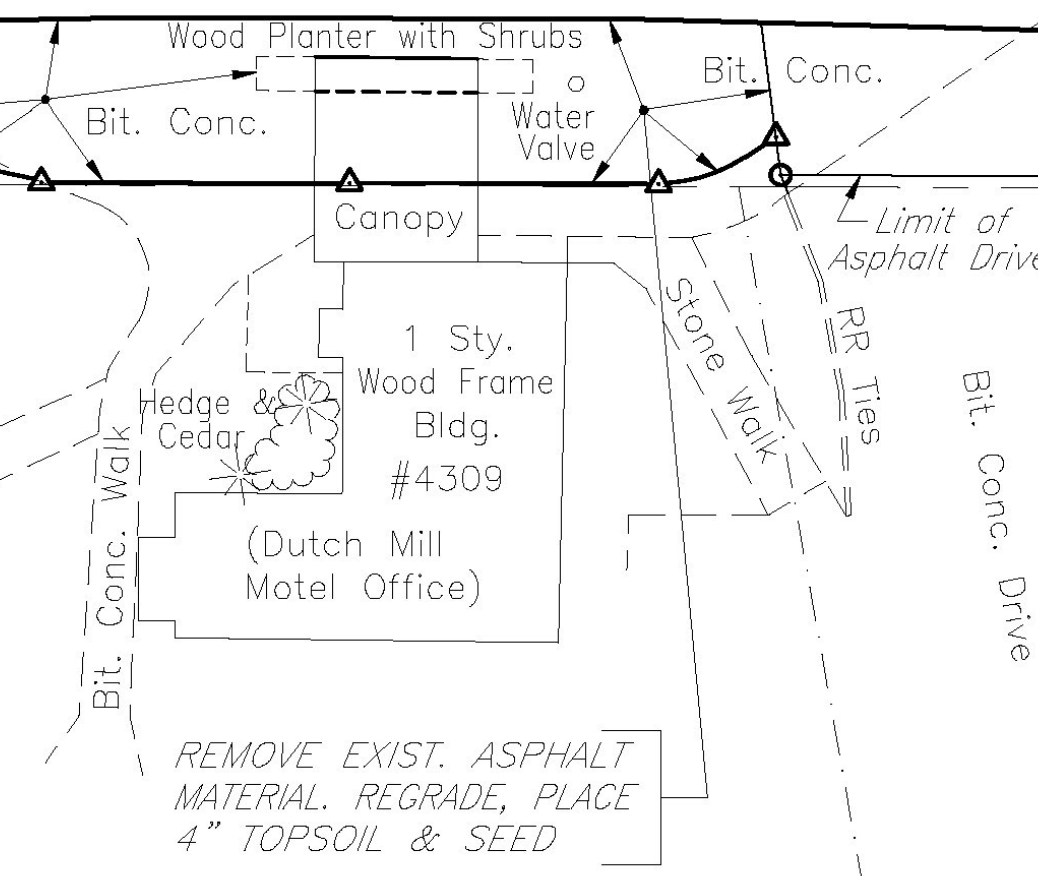
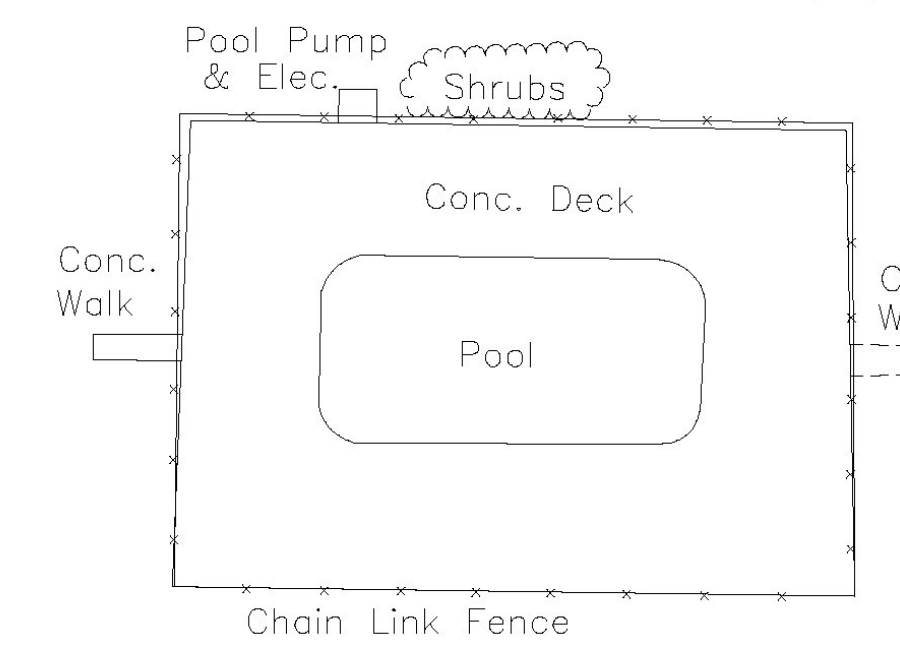
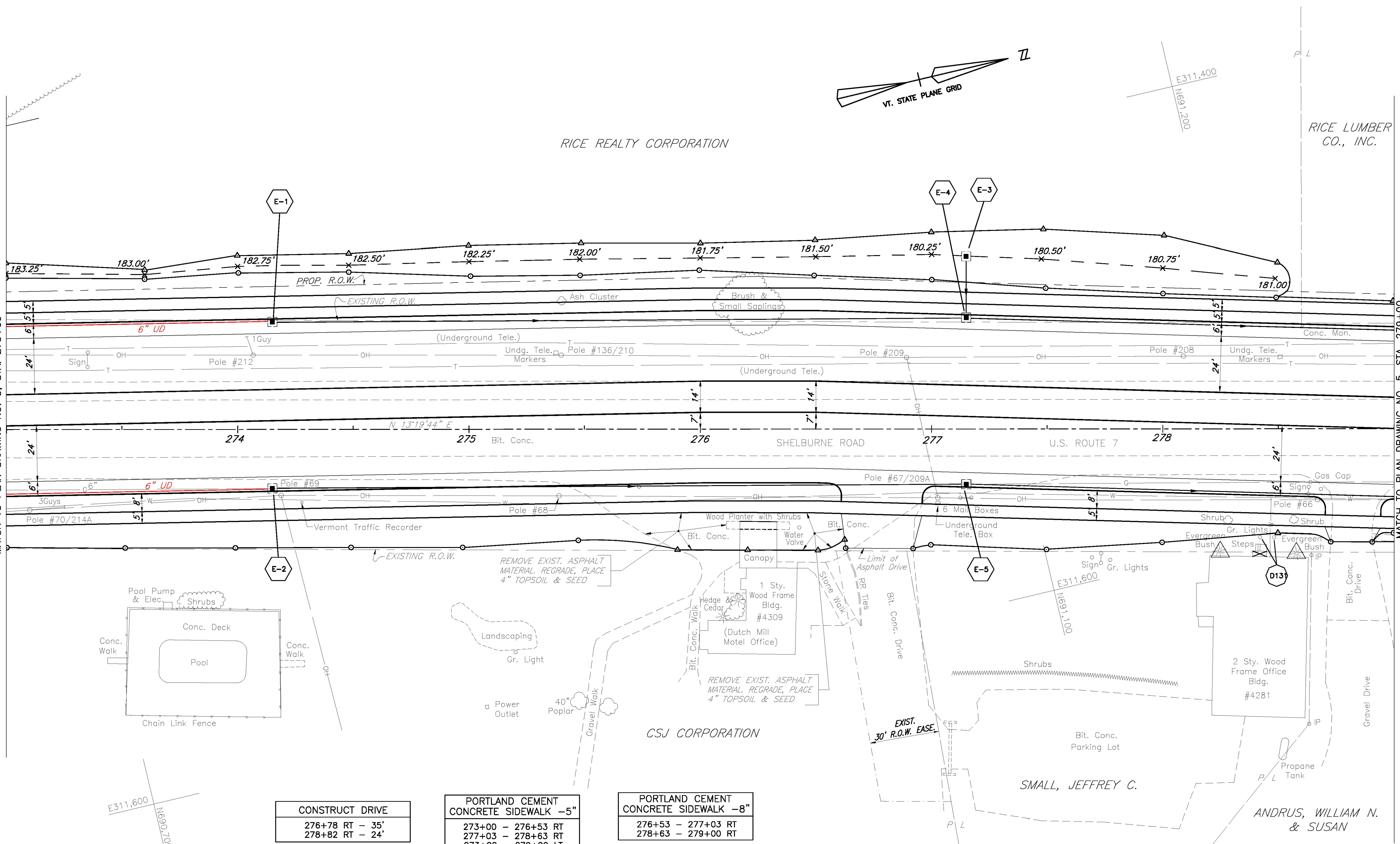


RICE REALTY CORPORATION

RICE LUMBER CO., INC.

MATCH TO PLAN DRAWING NO. 3, STA. 273+00

MATCH TO PLAN DRAWING NO. 5, STA. 279+00



- NOTES:**
- UNDERGROUND AND AERIAL UTILITY LOCATIONS ARE PLOTTED BASED ON THE BEST AVAILABLE INFORMATION. LOCATIONS SHOULD BE VERIFIED BY THE CONTRACTOR BEFORE WORK.
 - SEE PLAN NOTES DRAWING NO. 1 FOR PLAN NOTES AND GENERAL NOTES.
 - THE CANOPY OF THE DUTCH MILL HAS HISTORIC SIGNIFICANCE. THE CONTRACTOR SHALL EXERCISE CARE WHILE COMPLETING ACTIVITIES IN THIS AREA.

CONSTRUCT DRIVE	
276+78 RT	- 35'
278+82 RT	- 24'

PORTLAND CEMENT CONCRETE SIDEWALK -5"	
273+00 - 276+53 RT	
277+03 - 278+63 RT	
273+00 - 279+00 LT	

PORTLAND CEMENT CONCRETE SIDEWALK -8"	
276+53 - 277+03 RT	
278+63 - 279+00 RT	

DEMOLITION & DISPOSAL OF:	
D131 @ 278+45, RT (2 GLs) *	
* - REMOVED BY OTHERS AS OF JAN. 2004	

RECORD DRAWING REVISIONS		
NO.	DATE	DESCRIPTION
1.	7/24/09	FIELD MARK UPS ADDED TO THE PLANS

DATUM
VERTICAL NGVD 1929
HORIZONTAL NAD 1927

FOR PROFILE SEE PROFILE DRAWING NO. 5

7/20/04



SHELBURNE
SURVEYED BY V.S.C. INC. DATE _____
DRAWN BY E.A.A. INC. DATE _____
TRACED BY E.A.A. INC. DATE _____

PROJECT NH-EGC-019-4(27)
PLAN DRAWING NO. 4
SHEET NO. 107 OF 537