

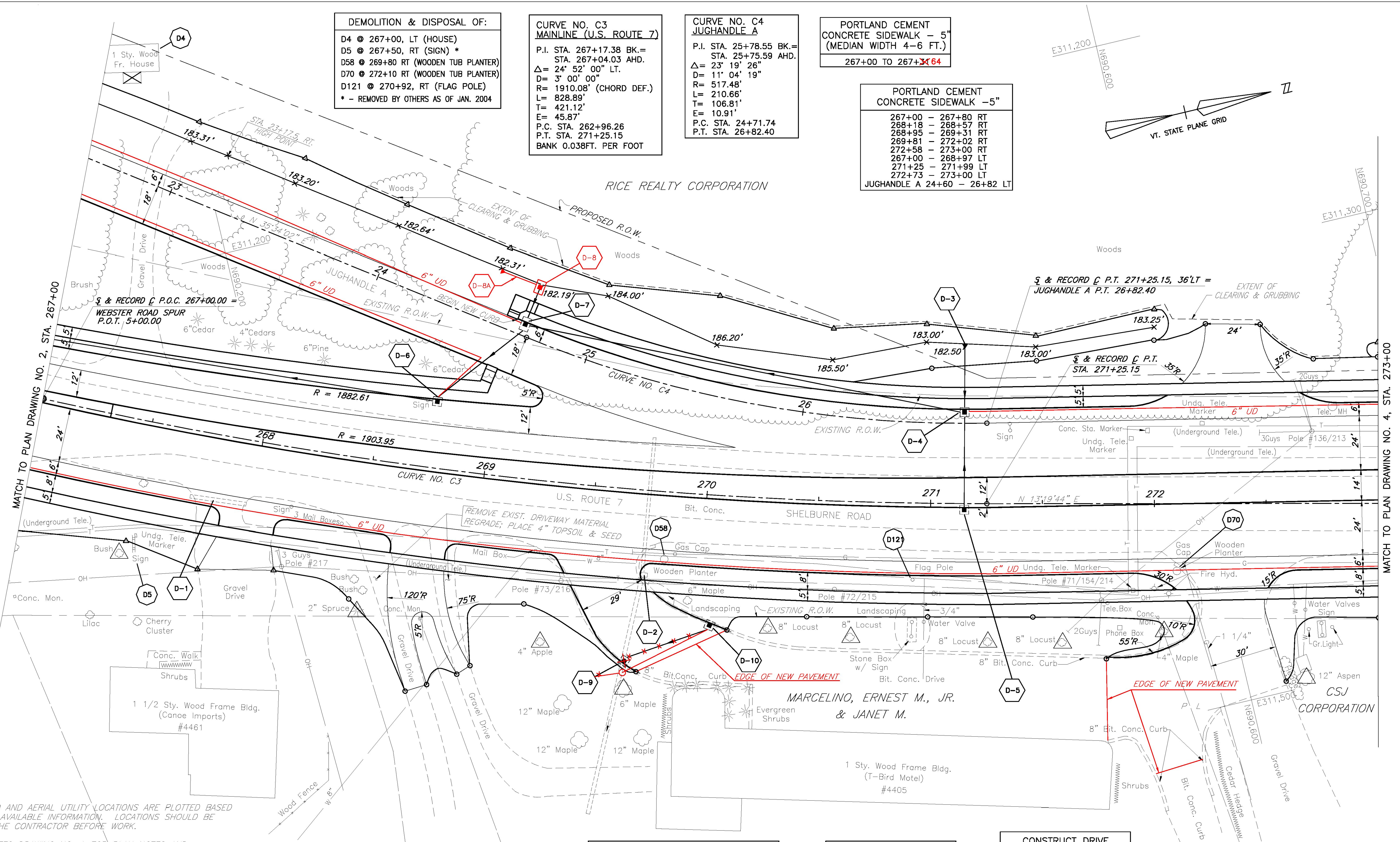
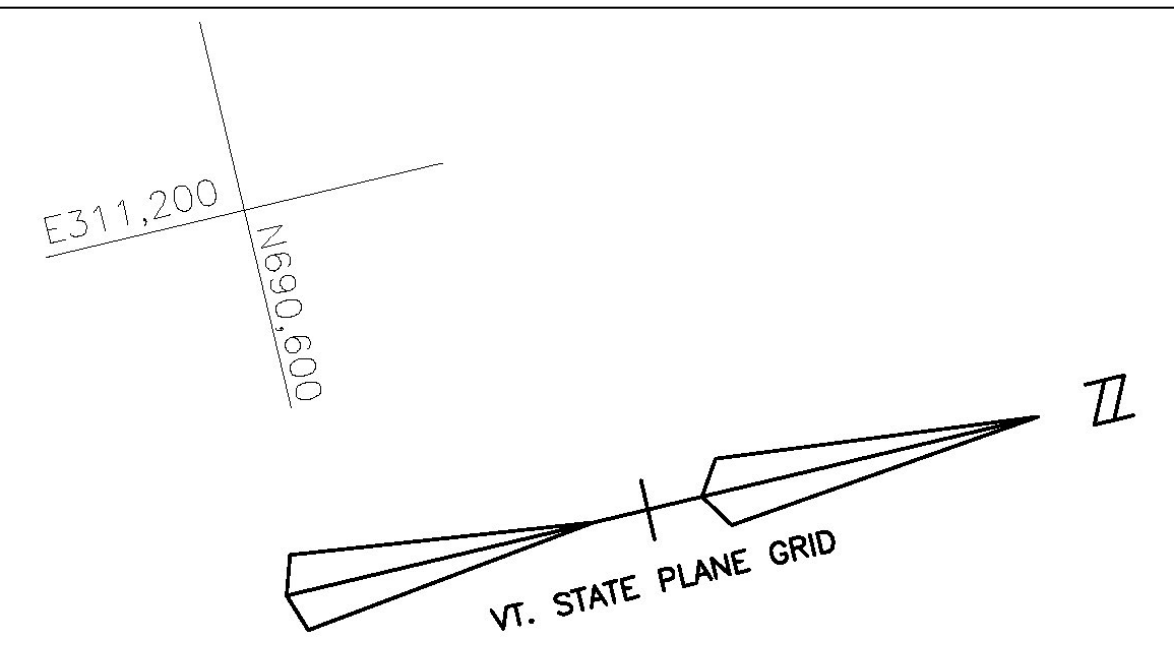
DEMOLITION & DISPOSAL OF:
 D4 @ 267+00, LT (HOUSE)
 D5 @ 267+50, RT (SIGN) *
 D58 @ 269+80 RT (WOODEN TUB PLANTER)
 D70 @ 272+10 RT (WOODEN TUB PLANTER)
 D121 @ 270+92, RT (FLAG POLE)
 * - REMOVED BY OTHERS AS OF JAN. 2004

**CURVE NO. C3
 MAINLINE (U.S. ROUTE 7)**
 P.I. STA. 267+17.38 BK.=
 STA. 267+04.03 AHD.
 $\Delta = 24^\circ 52' 00''$ LT.
 D = 3' 00' 00"
 R = 1910.08' (CHORD DEF.)
 L = 828.89'
 T = 421.12'
 E = 45.87'
 P.C. STA. 262+96.26
 P.T. STA. 271+25.15
 BANK 0.038FT. PER FOOT

**CURVE NO. C4
 JUGHANDLE A**
 P.I. STA. 25+78.55 BK.=
 STA. 25+75.59 AHD.
 $\Delta = 23^\circ 19' 26''$
 D = 11' 04' 19"
 R = 517.48'
 L = 210.66'
 T = 106.81'
 E = 10.91'
 P.C. STA. 24+71.74
 P.T. STA. 26+82.40

**PORTLAND CEMENT
 CONCRETE SIDEWALK - 5"**
 267+00 TO 267+34.64

**PORTLAND CEMENT
 CONCRETE SIDEWALK - 5"**
 267+00 - 267+80 RT
 268+18 - 268+57 RT
 268+95 - 269+31 RT
 269+81 - 272+02 RT
 272+58 - 273+00 RT
 267+00 - 268+97 LT
 271+25 - 271+99 LT
 272+73 - 273+00 LT
 JUGHANDLE A 24+60 - 26+82 LT



NOTES:
 1. UNDERGROUND AND AERIAL UTILITY LOCATIONS ARE PLOTTED BASED ON THE BEST AVAILABLE INFORMATION. LOCATIONS SHOULD BE VERIFIED BY THE CONTRACTOR BEFORE WORK.
 2. SEE PLAN NOTES DRAWING NO. 1 FOR PLAN NOTES AND GENERAL NOTES.

BOURGEA, ROGER L. & P.L.
 MIGNONNE G.

SCHUMACHER, ROBERT V. & BARBARA K.
 RECORD DRAWING REVISIONS

NO	DATE	DESCRIPTION
1.	7/24/09	FIELD MARK UPS ADDED TO THE PLANS

HOES, H. DOUGLAS & JACQUELINE

CONSTRUCT SIDEWALK RAMP	TYPE
JUGHANDLE A 24+62, LT	2
JUGHANDLE A 24+62, RT	1

CONSTRUCT APPROACH
JUGHANDLE A 271+25.15 LT

PORTLAND CEMENT CONCRETE SIDEWALK - 8"
267+80 - 268+18 RT
268+57 - 268+95 RT
269+31 - 269+81 RT
272+02 - 272+58 RT
271+99 - 272+73 LT

CONSTRUCT DRIVE
267+99 RT - 24' (GRAVEL)
268+76 RT - 24' (GRAVEL)
269+56 RT - 29'
272+30 RT - 30'
272+37 LT - 24'

SHELBURNE
 SURVEYED BY V.S.C. INC. DATE _____
 DRAWN BY E.A.A. INC. DATE _____
 TRACED BY E.A.A. INC. DATE _____

PROJECT NH-EGC-019-4(27)
 PLAN DRAWING NO. 3
 SHEET NO. 106 OF 537

DATUM
 VERTICAL NGVD 1929
 HORIZONTAL NAD 1927

FOR PROFILE SEE PROFILE DRAWING NO. 3 & 4

7/20/04

