

CONSTRUCT SIDEWALK RAMP	TYPE
265+07, RT	1
265+62, RT	1
265+93, LT	2
265+93, RT	2
WEBSTER ROAD 6+19, RT	1
WEBSTER ROAD 6+19, LT	2

PORTLAND CEMENT CONCRETE SIDEWALK -5"
261+00 - 265+11 RT
265+62 - 265+90 RT
265+90 - 267+00 LT
265+93 RT - 6+19 RT
WEBSTER RD. SPUR 5+00 - 6+37 LT
6+88 - 11+41 LT
11+71 - 12+28 LT

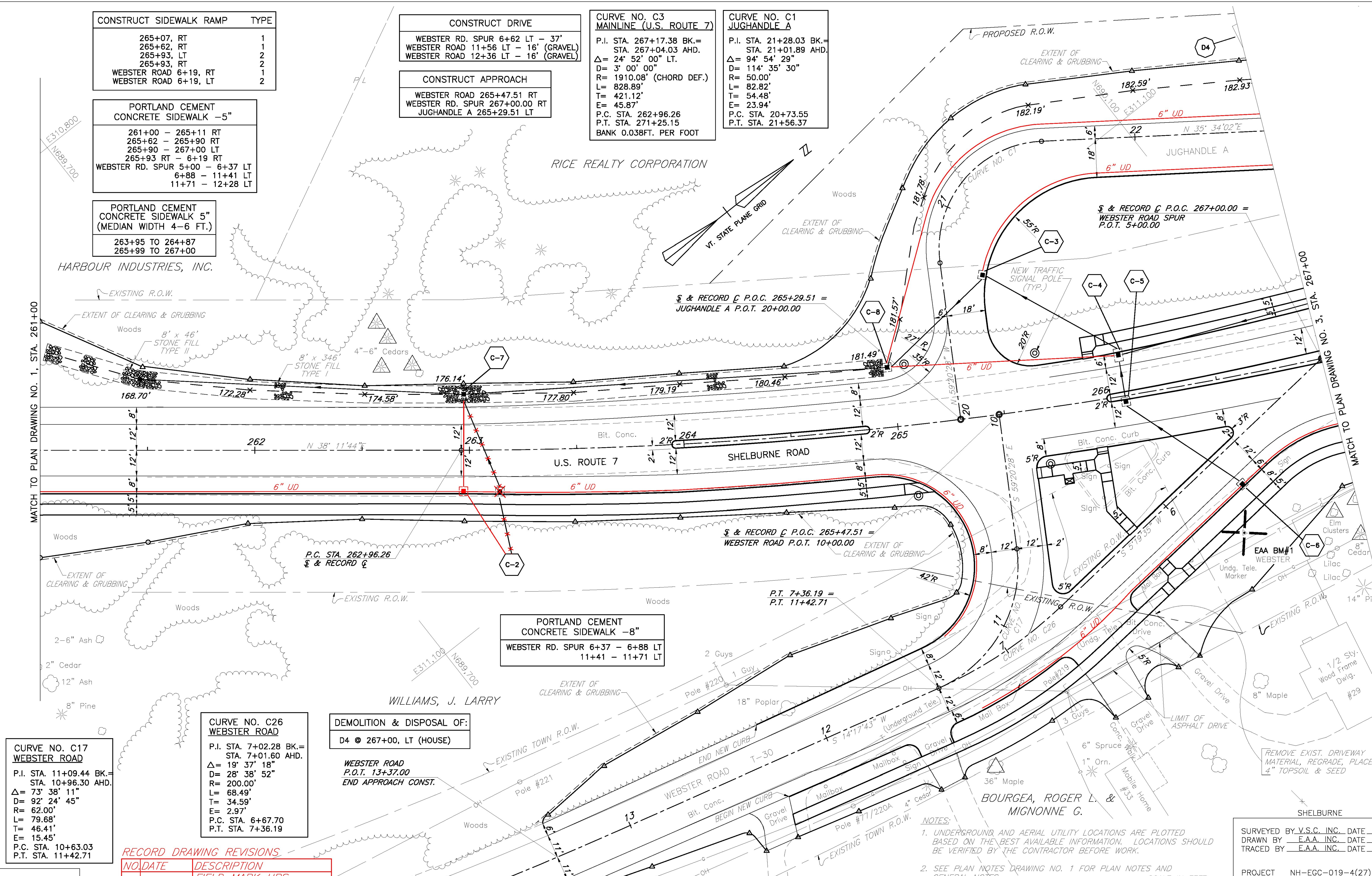
PORTLAND CEMENT CONCRETE SIDEWALK 5" (MEDIAN WIDTH 4-6 FT.)
263+95 TO 264+87
265+99 TO 267+00

CONSTRUCT DRIVE
WEBSTER RD. SPUR 6+62 LT - 37'
WEBSTER ROAD 11+56 LT - 16' (GRAVEL)
WEBSTER ROAD 12+36 LT - 16' (GRAVEL)

CONSTRUCT APPROACH
WEBSTER ROAD 265+47.51 RT
WEBSTER RD. SPUR 267+00.00 RT
JUGHANDLE A 265+29.51 LT

CURVE NO. C3 MAINLINE (U.S. ROUTE 7)
P.I. STA. 267+17.38 BK.=
STA. 267+04.03 AHD.
$\Delta = 24^\circ 52' 00''$ LT.
D= 3' 00' 00"
R= 1910.08' (CHORD DEF.)
L= 828.89'
T= 421.12'
E= 45.87'
P.C. STA. 262+96.26
P.T. STA. 271+25.15
BANK 0.038FT. PER FOOT

CURVE NO. C1 JUGHANDLE A
P.I. STA. 21+28.03 BK.=
STA. 21+01.89 AHD.
$\Delta = 94^\circ 54' 29''$
D= 114' 35' 30"
R= 50.00'
L= 82.82'
T= 54.48'
E= 23.94'
P.C. STA. 20+73.55
P.T. STA. 21+56.37



CURVE NO. C17 WEBSTER ROAD
P.I. STA. 11+09.44 BK.=
STA. 10+96.30 AHD.
$\Delta = 73^\circ 38' 11''$
D= 92' 24' 45"
R= 62.00'
L= 79.68'
T= 46.41'
E= 15.45'
P.C. STA. 10+63.03
P.T. STA. 11+42.71

CURVE NO. C26 WEBSTER ROAD
P.I. STA. 7+02.28 BK.=
STA. 7+01.60 AHD.
$\Delta = 19^\circ 37' 18''$
D= 28' 38' 52"
R= 200.00'
L= 68.49'
T= 34.59'
E= 2.97'
P.C. STA. 6+67.70
P.T. STA. 7+36.19

DEMOLITION & DISPOSAL OF:
D4 @ 267+00, LT (HOUSE)
WEBSTER ROAD P.O.T. 13+37.00
END APPROACH CONST.

PORTLAND CEMENT CONCRETE SIDEWALK -8"
WEBSTER RD. SPUR 6+37 - 6+88 LT
11+41 - 11+71 LT

RECORD DRAWING REVISIONS		
NO.	DATE	DESCRIPTION
1.	7/24/09	FIELD MARK UPS ADDED TO THE PLANS

NOTES:
 1. UNDERGROUND AND AERIAL UTILITY LOCATIONS ARE PLOTTED BASED ON THE BEST AVAILABLE INFORMATION. LOCATIONS SHOULD BE VERIFIED BY THE CONTRACTOR BEFORE WORK.
 2. SEE PLAN NOTES DRAWING NO. 1 FOR PLAN NOTES AND GENERAL NOTES.

SURVEYED BY	V.S.C. INC.	DATE	
DRAWN BY	E.A.A. INC.	DATE	
TRACED BY	E.A.A. INC.	DATE	
PROJECT	NH-EGC-019-4(27)		
PLAN DRAWING NO.	2		
SHEET NO.	105	OF	537

DATUM
 VERTICAL NGVD 1929
 HORIZONTAL NAD 1927

FOR PROFILE SEE PROFILE DRAWING NO. 2 & 3

7/20/04
 SCALE IN FEET
 0 20 40