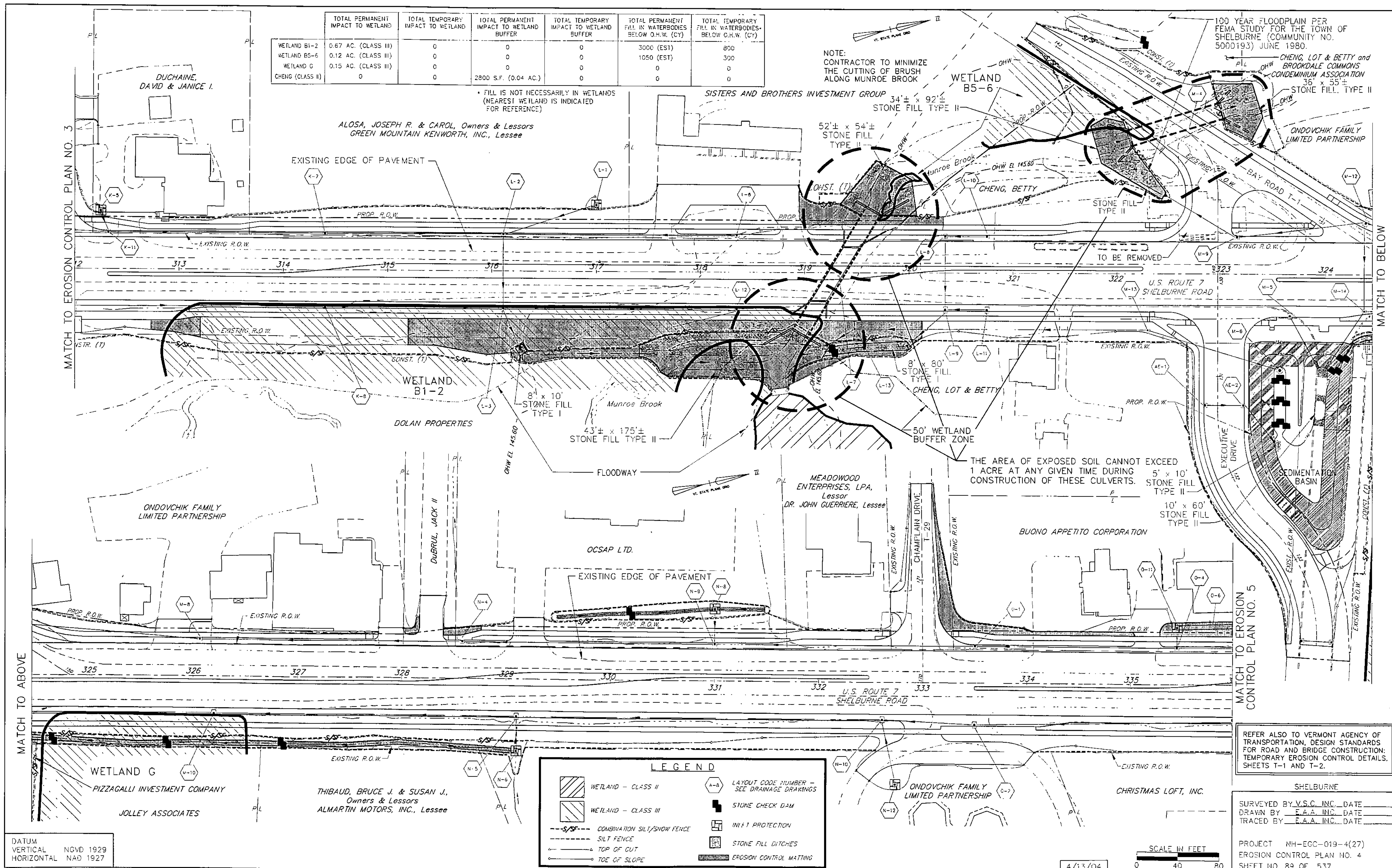


	TOTAL PERMANENT IMPACT TO WETLAND	TOTAL TEMPORARY IMPACT TO WETLAND	TOTAL PERMANENT IMPACT TO WETLAND BUFFER	TOTAL TEMPORARY IMPACT TO WETLAND BUFFER	TOTAL PERMANENT FILL IN WATERBODIES BELOW O.H.W. (CY)	TOTAL TEMPORARY FILL IN WATERBODIES BELOW O.H.W. (CY)
WETLAND B1-2	0.67 AC. (CLASS III)	0	0	0	3000 (EST)	800
WETLAND B5-6	0.12 AC. (CLASS III)	0	0	0	1050 (EST)	300
WETLAND G	0.15 AC. (CLASS III)	0	0	0	0	0
CHENG (CLASS II)	0	0	2800 S.F. (0.04 AC.)	0	0	0

* FILL IS NOT NECESSARILY IN WETLANDS (NEAREST WETLAND IS INDICATED FOR REFERENCE)

NOTE: CONTRACTOR TO MINIMIZE THE CUTTING OF BRUSH ALONG MUNROE BROOK

100 YEAR FLOODPLAIN PER FEMA STUDY FOR THE TOWN OF SHELBURNE (COMMUNITY NO. 5000193) JUNE 1980.



LEGEND	
	WETLAND - CLASS II
	WETLAND - CLASS III
	COMBINATION SILT/SNOW FENCE
	SILT FENCE
	TOP OF CUT
	TOE OF SLOPE
	LAYOUT CODE NUMBER - SEE DRAINAGE DRAWINGS
	STONE CHECK DAM
	INLET PROTECTION
	STONE FILL DITCHES
	EROSION CONTROL MATTING

DATUM
VERTICAL NGVD 1929
HORIZONTAL NAD 1927

REFER ALSO TO VERMONT AGENCY OF TRANSPORTATION, DESIGN STANDARDS FOR ROAD AND BRIDGE CONSTRUCTION: TEMPORARY EROSION CONTROL DETAILS, SHEETS T-1 AND T-2.

SHELBURNE
SURVEYED BY V.S.C. INC. DATE _____
DRAWN BY E.A.A. INC. DATE _____
TRACED BY E.A.A. INC. DATE _____
PROJECT NH-ECC-019-4(27)
EROSION CONTROL PLAN NO. 4
SHEET NO. 89 OF 537

SCALE IN FEET
0 40 80

4/13/04

MATCH TO EROSION CONTROL PLAN NO. 3

MATCH TO BELOW

MATCH TO ABOVE

MATCH TO EROSION CONTROL PLAN NO. 5