

MATCH TO ALIGNMENT DRAWING NO. 4
STA. 366+00

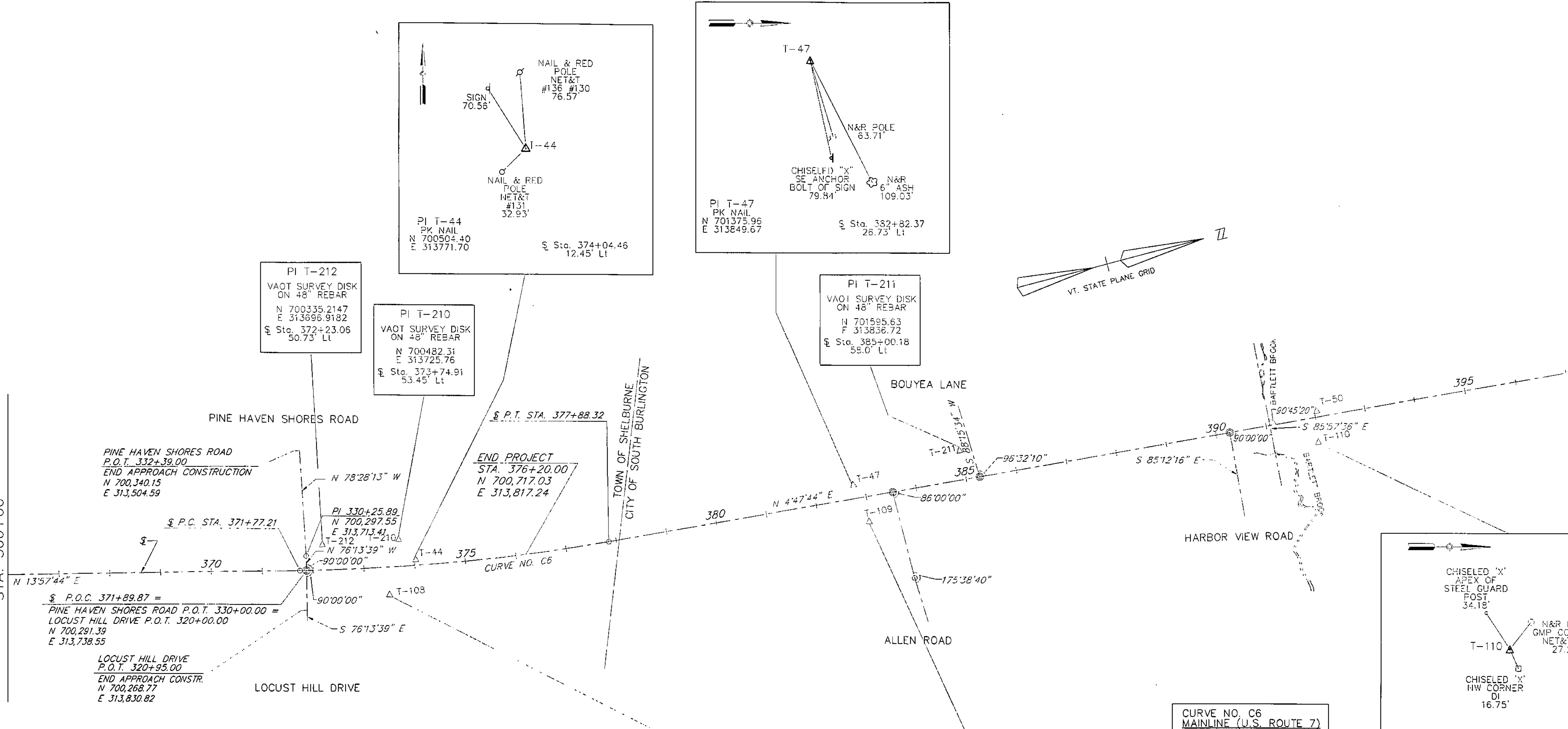
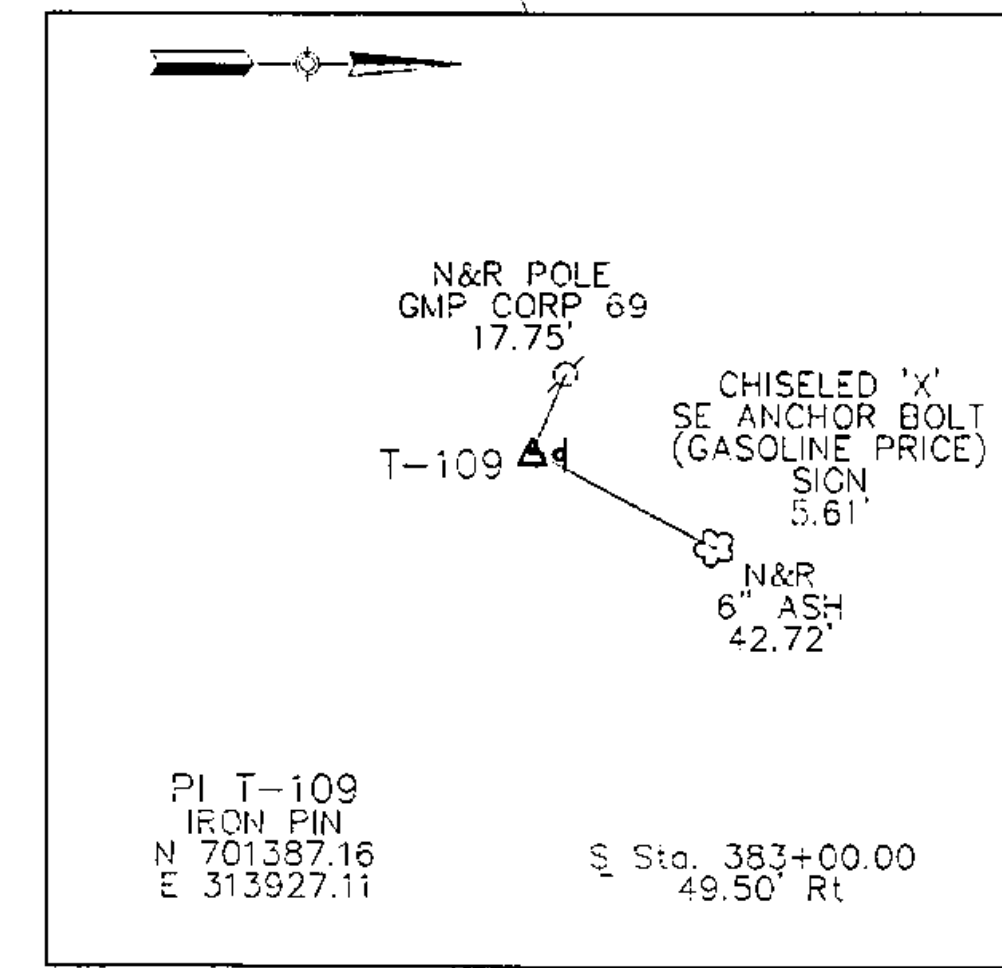
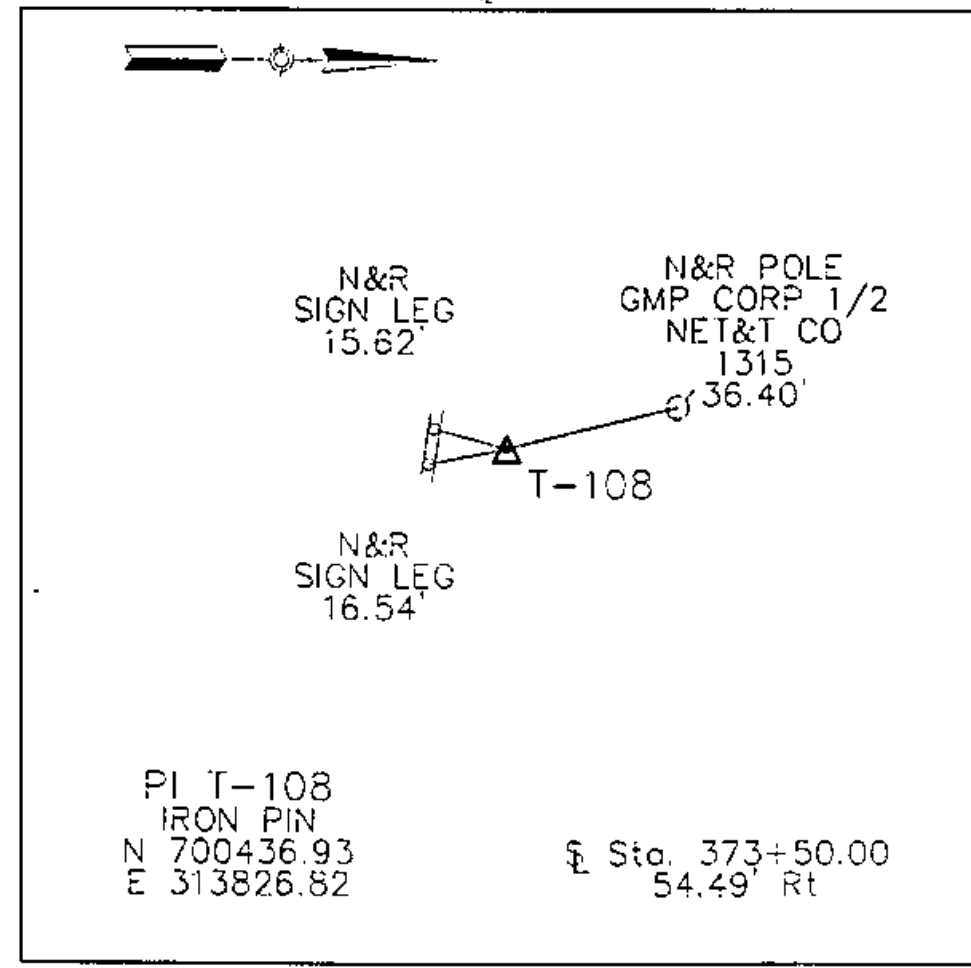


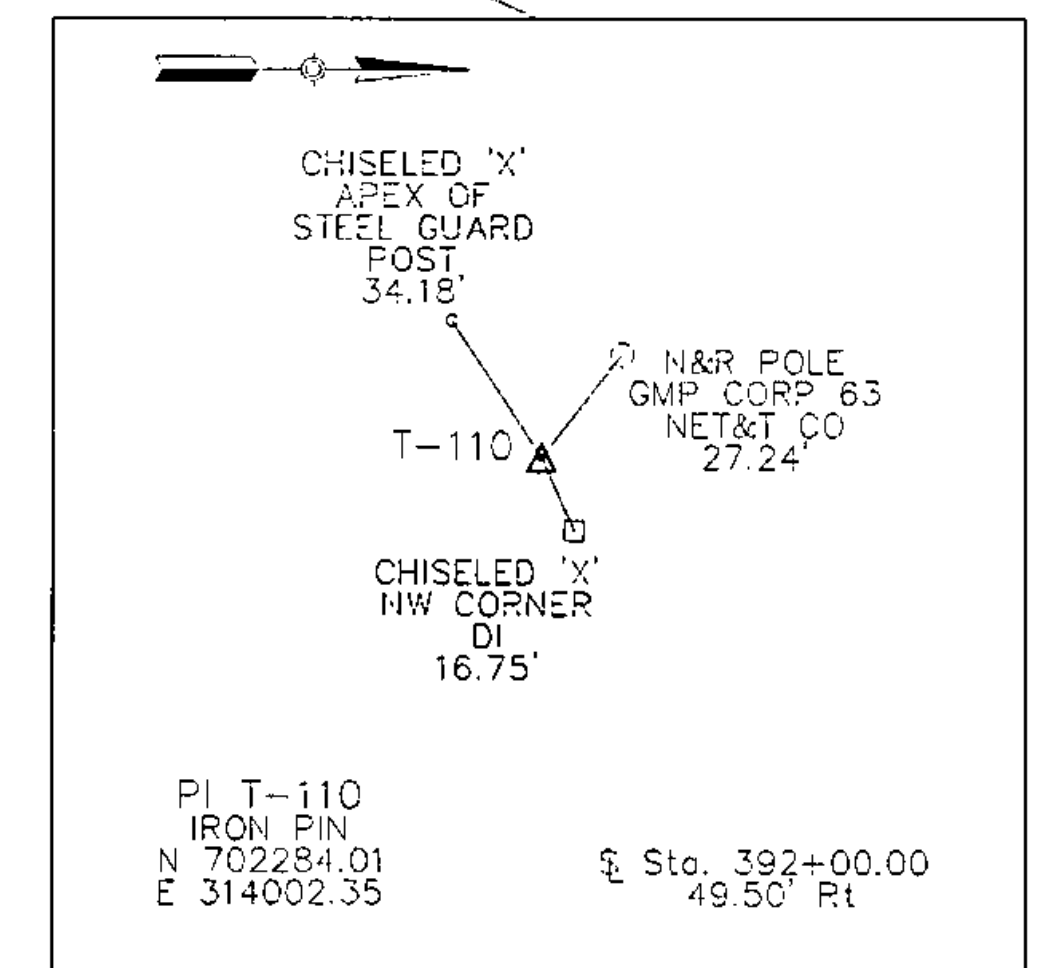
TABLE OF BENCHMARKS

BM #	STATION	OFFSET	ELEVATION	DESCRIPTION
EAA BM 104	367+06	71' RT.	189.517	IS THE SW CORNER OF THE WESTERLY CONC BASE SUPPORTING A SIGN (KD'S FURNITURE & GIFTS - 1914) LOCATED ON THE EAST SIDE OF U.S. ROUTE 7, APPROXIMATELY 300 FEET NORTH OF THE INTERSECTION OF U.S. ROUTE 7 AND MARTINDALE ROAD.
EAA BM 9	367+74	44' RT.	200.760	IS A CHISELED "X" IN WEST CAP BOLT OF A FIRE HYDRANT LOCATED ON THE EAST SIDE OF U.S. RTE 7, APPROX. 425 FEET SOUTH OF INTERSECTION OF U.S. ROUTE 7 AND PINE HAVEN SHORES.
EAA BM 10	378+55	50' LT.	180.515	IS THE TOP OF THE N.E. ANCHOR BOLT OF A HIGH-ELECTRIC TRANSMISSION LINE POLE LOCATED ON THE WEST SIDE OF U.S. RTE 7, APPROX. 500 FEET SOUTH OF THE INTERSECTION OF U.S. ROUTE 7 AND ALLEN ROAD.
EAA BM 11	381+88	82' RT.	160.178	IS A CHISELED "X" IN THE SOUTH RIM OF A MANHOLE LOCATED ON THE EAST SIDE OF U.S. ROUTE 7, NEAR HOWARD JOHNSON MOTEL PARKING AREA, APPROX. 180 FEET NORTH OF THE INTERSECTION OF U.S. ROUTE 7 AND HARBOR VIEW ROAD.



**CURVE NO. C6
MAINLINE (U.S. ROUTE 7)**

P.I. STA. 374+83.42 BK. =
STA. 374+82.10 AHD.
N 700,576.27
E 313,809.40
Δ = 9' 10' 00"
D = 1' 30' 00"
R = 3819.83' (CHORD DEF.)
L = 611.11'
T = 306.22'
E = 12.25'
P.C. STA. 371+77.21
N 700,279.10
E 313,735.52
P.T. STA. 377+88.32
N 700,281.41
E 313,835.00
BANK 0.021' PER FOOT



NOTE:
HORIZONTAL DATUM IS NAD 1927
FROM VERMONT AGENCY OF TRANSPORTATION, VT.
TRANSVERSE MERCATOR PROJECTION. (1946)
GRID SCALE FACTOR = 1.000000
SEA LEVEL FACTOR USED (187.0') = 0.9999911

DATUM
VERTICAL NGVD 1929
HORIZONTAL NAD 1927

SCALE IN FEET
0 100 200
4/13/04

SHELBURNE

SURVEYED BY V.S.C. INC. DATE _____
DRAWN BY E.A.A. INC. DATE _____
TRACED BY E.A.A. INC. DATE _____

PROJECT NH-ECC-019-4(27)
ALIGNMENT DRAWING NO. 5
SHEET NO. 18 OF 537