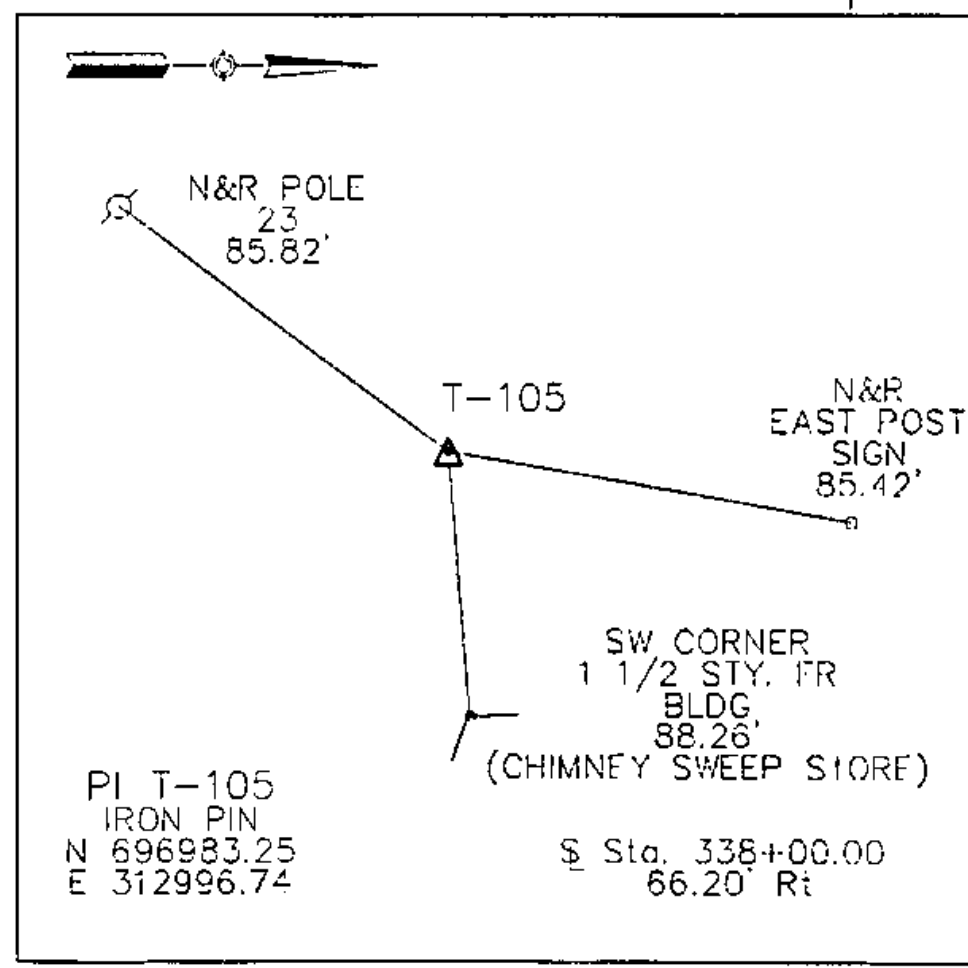


MATCH TO ALIGNMENT DRAWING NO. 3
STA. 334+00

MATCH TO ALIGNMENT DRAWING NO. 5
STA. 366+00



| CURVE NO. | NAME | PI STA. | BK. = |
|----------------|-------------------------|-----------|-------|
| CURVE NO. C5 | MAINLINE (U.S. ROUTE 7) | 356+06.22 | |
| CURVE NO. C24 | PENNY LANE | 291+00.63 | BK. = |
| CURVE NO. C172 | JUNIPER RIDGE | 253+61.58 | BK. = |

| B# | STATION | OFFSET | ELEVATION | DESCRIPTION |
|---------------|---------|----------|-----------|---|
| EAA BM 7 | 343+18 | 47' Lt. | 176.913 | IS THE N.E. CORNER OF THE BOTTOM CONCRETE STEP ON EAST SIDE OF A 2 STORY BRICK BUILDING LOCATED ON THE WEST SIDE OF U.S. RTE 7. APPROX. 325 FEET SOUTH OF THE INTERSECTION OF U.S. ROUTE 7 AND LAKEVIEW DRIVE. |
| EAA BM 103 | 334+44 | 131' Rt. | 169.845 | IS A CHISELED SQUARE ON THE NE CORNER OF A CONC STRUCTURE ON THE EAST SIDE OF U.S. ROUTE 7. IN THE APPROXIMATE CENTERLINE OF THE NORTH SIDE OF A CIRCULAR DRIVE APPROXIMATELY 130 FEET NORTH OF THE INTERSECTION OF U.S. ROUTE 7 AND CHAMPLAIN DRIVE. |
| EAA BM 2 | 354+60 | 22' Lt. | 196.504 | IS A STANDARD DISK SET IN CONCRETE, AND STAMPED "GERMAIN 1966" AND LOCATED ON THE WEST SIDE OF U.S. RTE 7. APPROX. 500 FEET SOUTH OF THE INTERSECTION OF U.S. ROUTE 7 AND WINDMILL BAY ROAD AND SET APPROX. 0.3 FEET BELOW GRADE. |

DATUM
VERTICAL NGVD 1929
HORIZONTAL NAD 1927

NOTE:
HORIZONTAL DATUM IS NAD 1927
FROM VERMONT AGENCY OF TRANSPORTATION, VT.
TRANSVERSE MERCATOR PROJECTION. (1946)
GRID SCALE FACTOR = 1.000000
SEA LEVEL FACTOR USED (187.0) = 0.9999911

SHELBURNE
SURVEYED BY V.S.C. INC. DATE _____
DRAWN BY E.A.A. INC. DATE _____
TRACED BY E.A.A. INC. DATE _____
PROJECT NH-EGC-019-4(27)
ALIGNMENT DRAWING NO. 4
SHEET NO. 17 OF 537

4/13/04
SCALE IN FEET
0 100 200