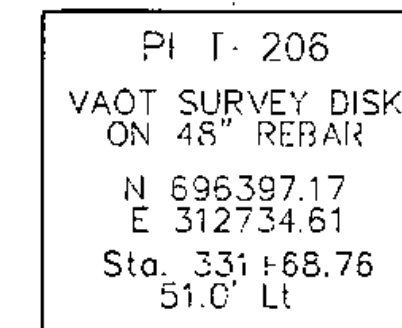
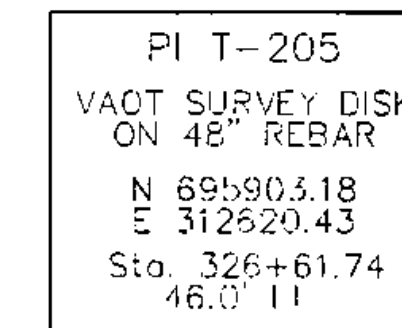
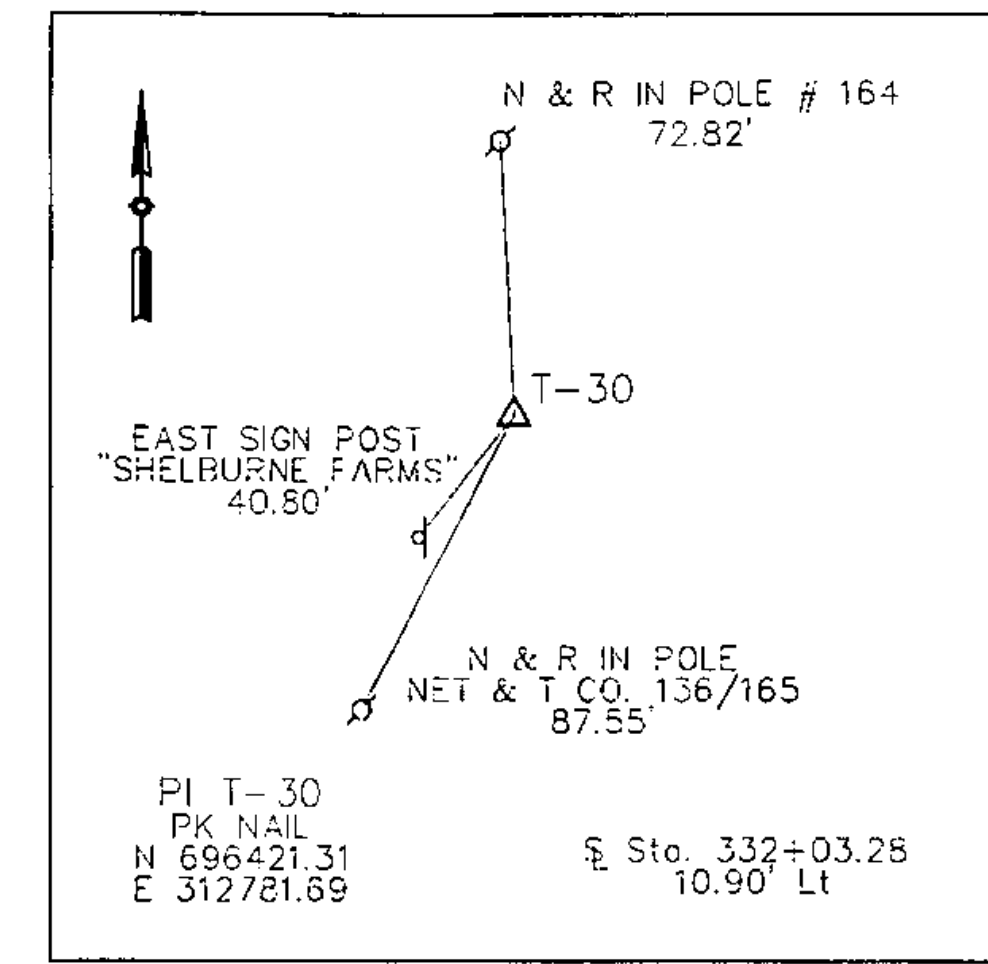


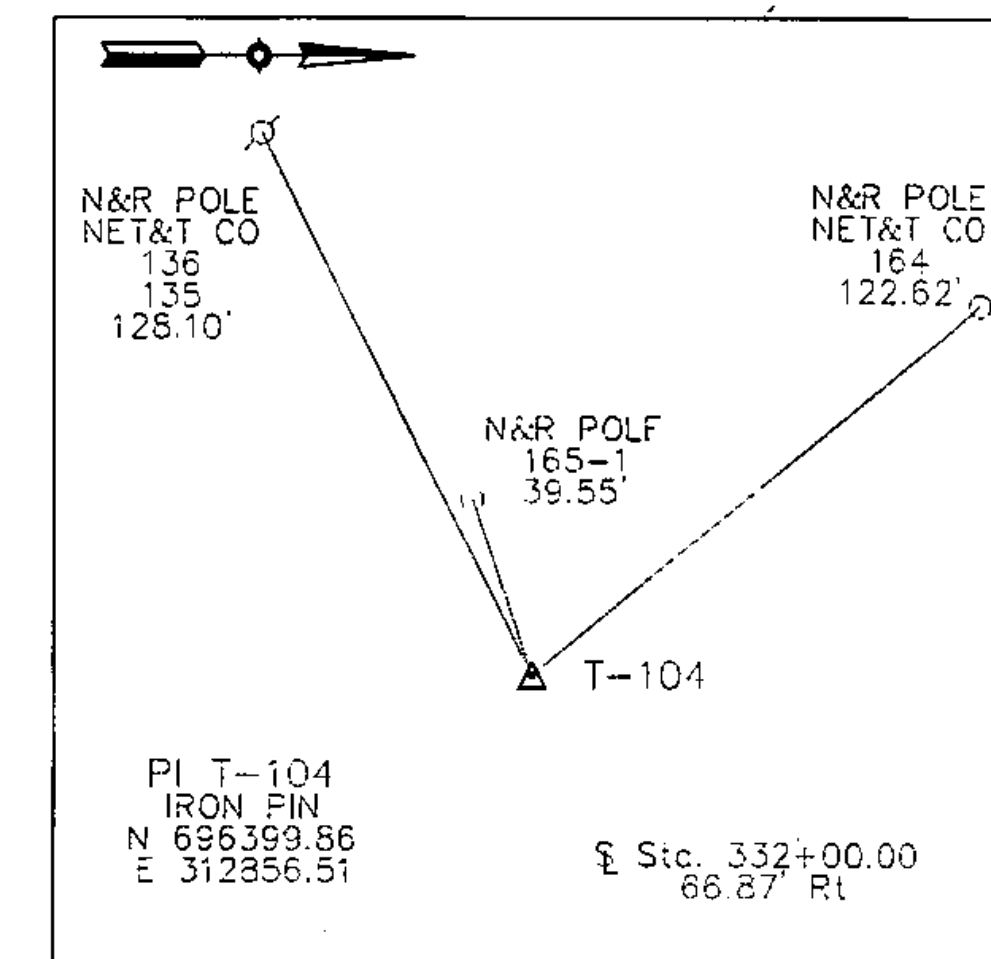
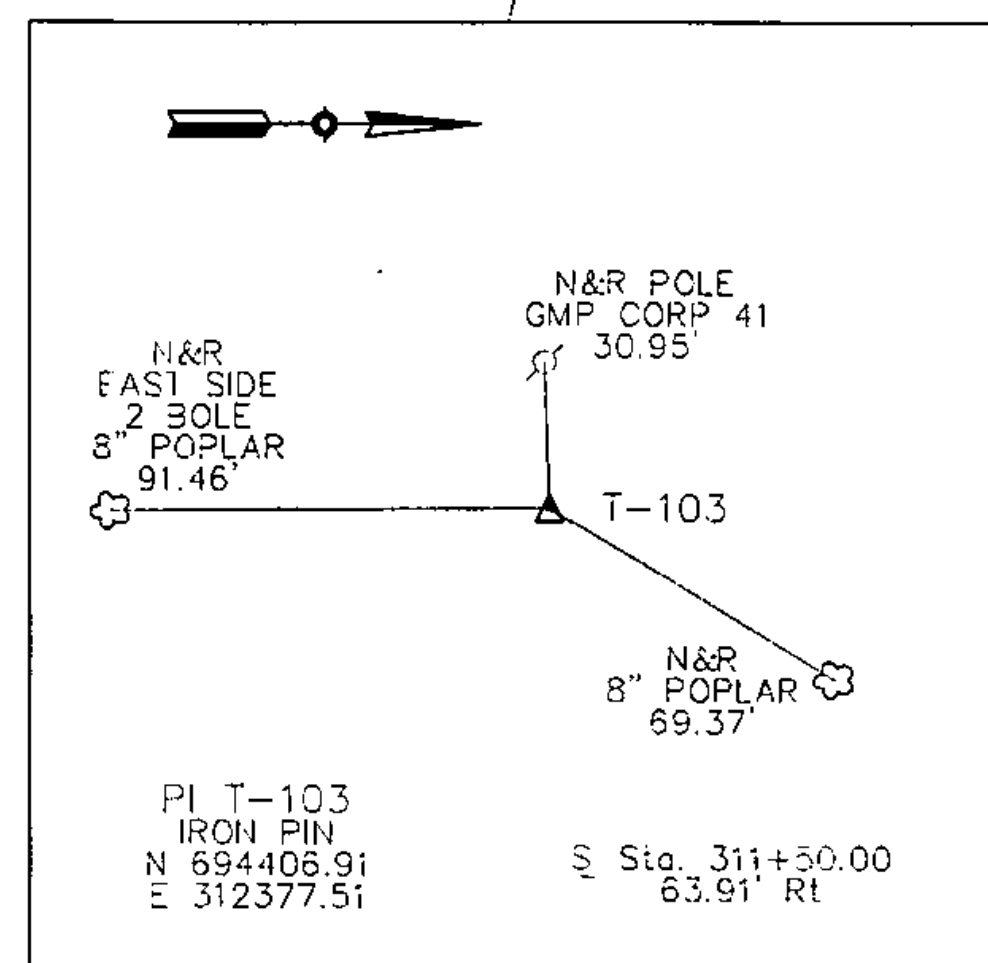
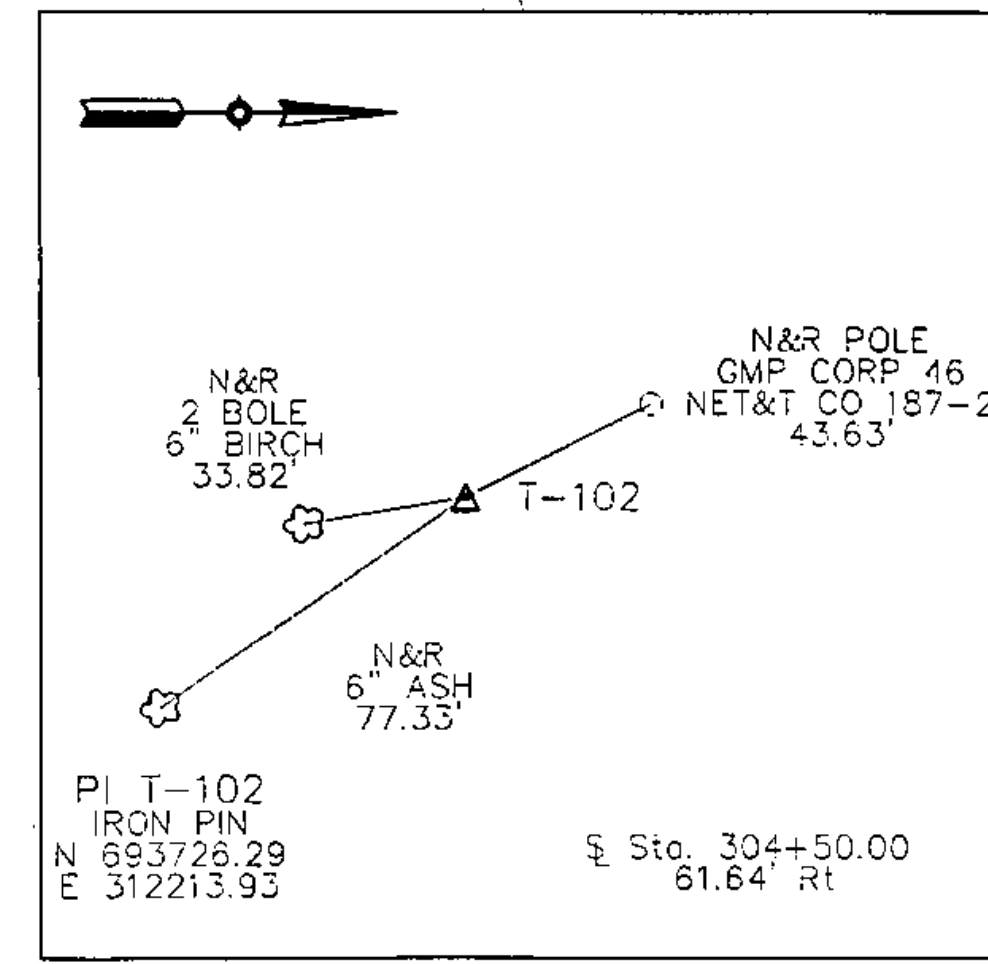
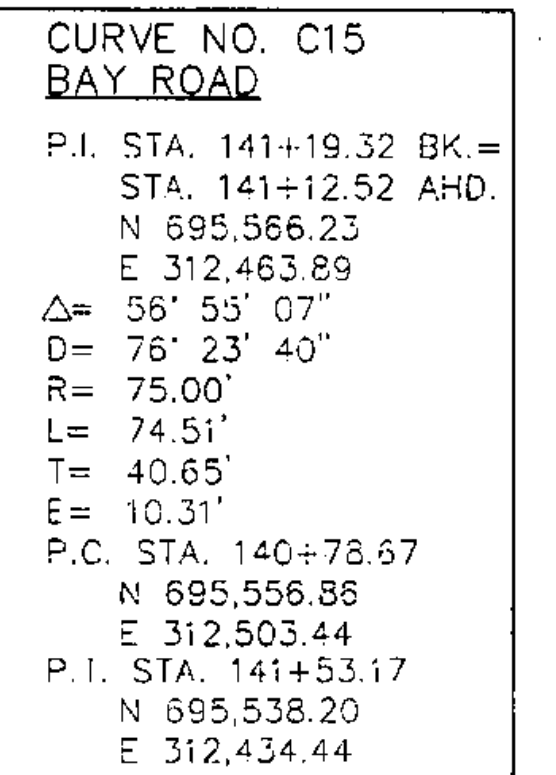
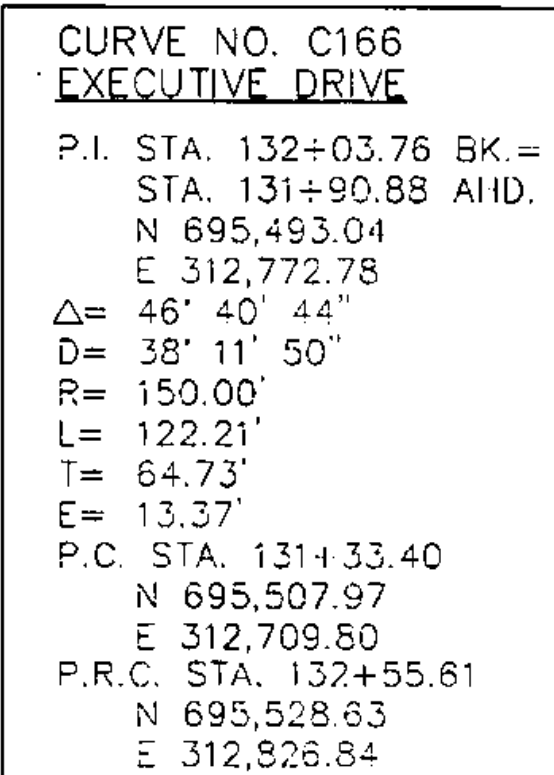
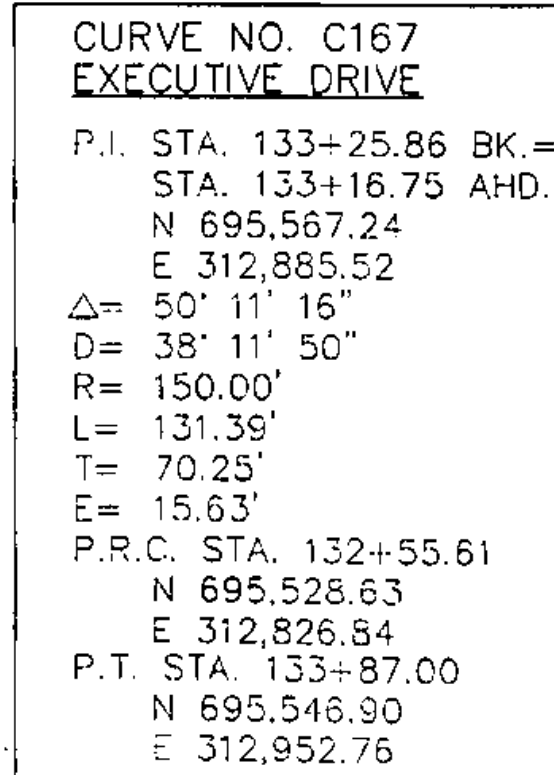
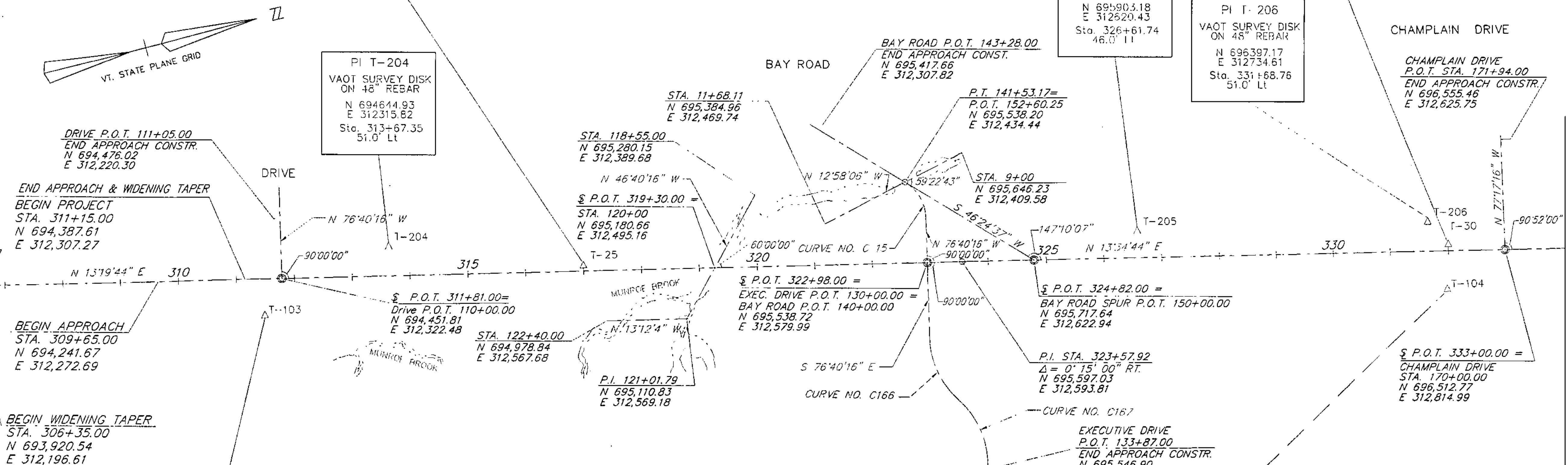
TABLE OF BENCHMARKS

| BM # | STATION | OFFSET | ELEVATION | DESCRIPTION |
|------------|---------|---------|-----------|---|
| EAA BM 102 | 306+65 | 80' RT. | 168.543 | IS THE SW CORNER OF A CONC PAD SUPPORTING WOODEN STEPS LEADING TO A 2 1/2 STORY FRAME HOUSE ON THE EAST SIDE OF U.S. ROUTE 7, APPROXIMATELY 500 FEET NORTH OF THE INTERSECTION OF U.S. ROUTE 7 AND MAPLE LEAF LANE. |
| EAA BM 4 | 308+50 | 32' RT. | 165.642 | IS A RAILROAD SPIKE IN POLE GMP CO. #43, LOCATED ON THE EAST SIDE OF U.S. RTE 7, APPROX. 700 FEET NORTH OF THE INTERSECTION OF U.S. ROUTE 7 AND MAPLE LEAF LANE. |
| EAA BM 5 | 319+22 | 28' RT. | 152.275 | IS CHISELED SQUARE IN THE N.E. CORNER OF THE EAST HEADWALL OVER MUNROE BROOK, LOCATED ON THE EAST SIDE OF U.S. RTE 7, APPROX. 500 FEET SOUTH OF THE INTERSECTION OF U.S. ROUTE 7 AND EXECUTIVE DRIVE. |
| EAA BM 6 | 332+72 | 30' LT. | 165.572 | IS A RAILROAD SPIKE IN POLE NET & CO #164, LOCATED ON THE WEST SIDE OF U.S. RTE 7, APPROX. 25 FEET SOUTH OF THE INTERSECTION OF U.S. ROUTE 7 AND CHAMPLAIN DRIVE. |



MATCH TO ALIGNMENT DRAWING NO. 2
STA. 304+00

MATCH TO ALIGNMENT DRAWING NO. 4
STA. 334+00



NOTE:
 HORIZONTAL DATUM IS NAD 1927
 FROM VERMONT AGENCY OF TRANSPORTATION, VT.
 TRANSVERSE MERCATOR PROJECTION. (1946)
 GRID SCALE FACTOR = 1.000000
 SEA LEVEL FACTOR USED (187.0') = 0.9999911

DATUM
 VERTICAL NGVD 1929
 HORIZONTAL NAD 1927

SHELBURNE

SURVEYED BY V.S.C. INC. DATE _____
 DRAWN BY E.A.A. INC. DATE _____
 TRACED BY E.A.A. INC. DATE _____

PROJECT NH-EGC-019-4(27)
 ALIGNMENT DRAWING NO. 3
 SHEET NO. 16 OF 537

SCALE IN FEET
 0 100 200
 4/13/04