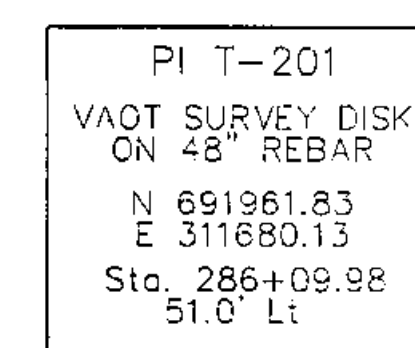
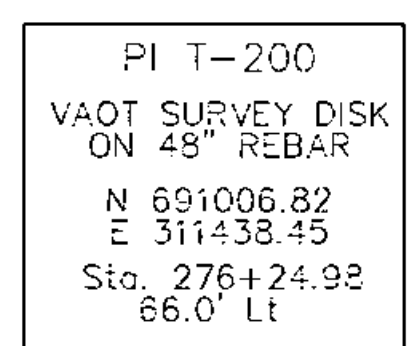
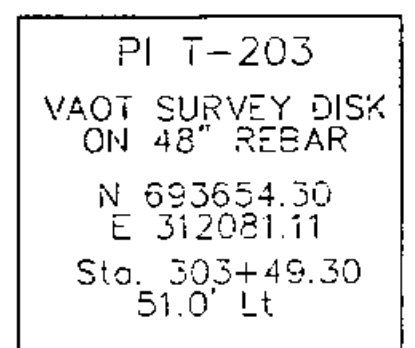
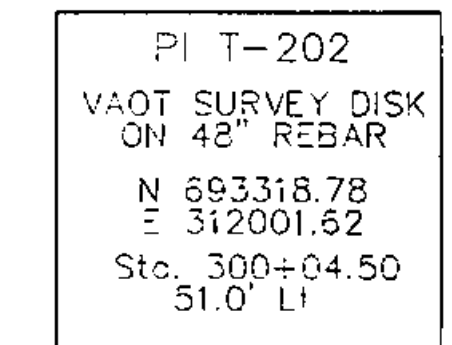
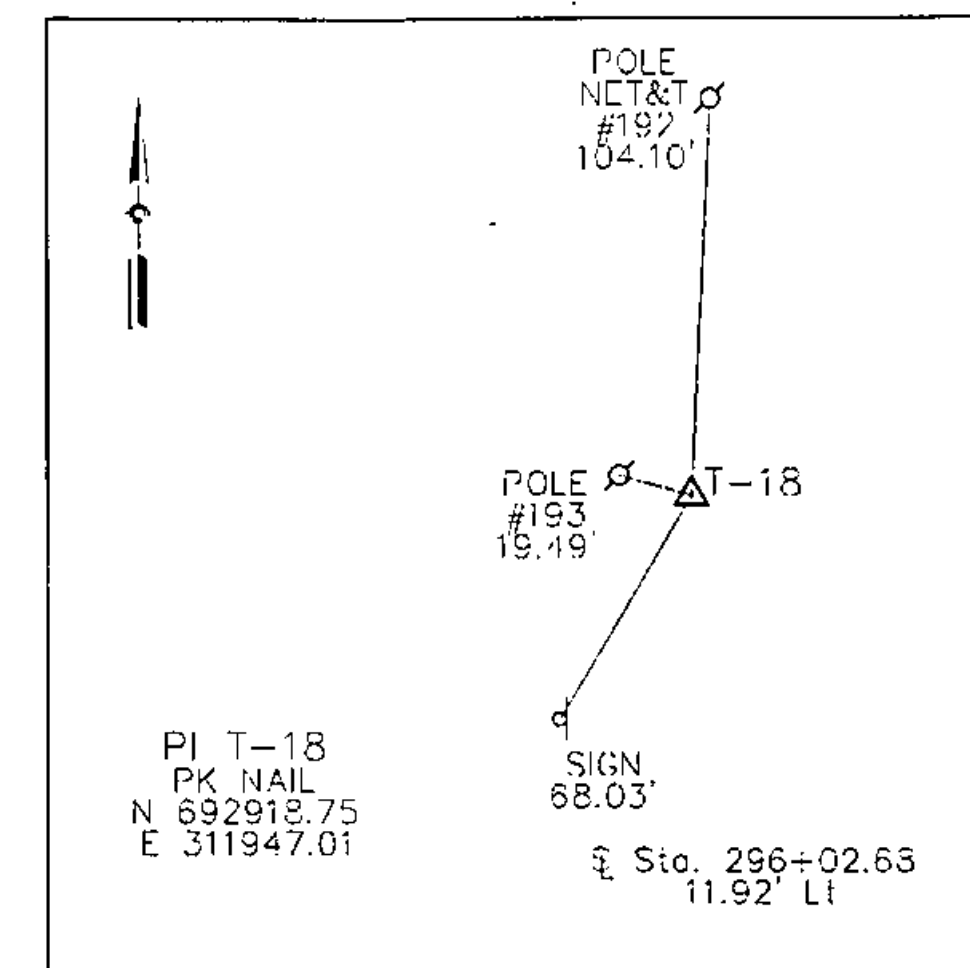
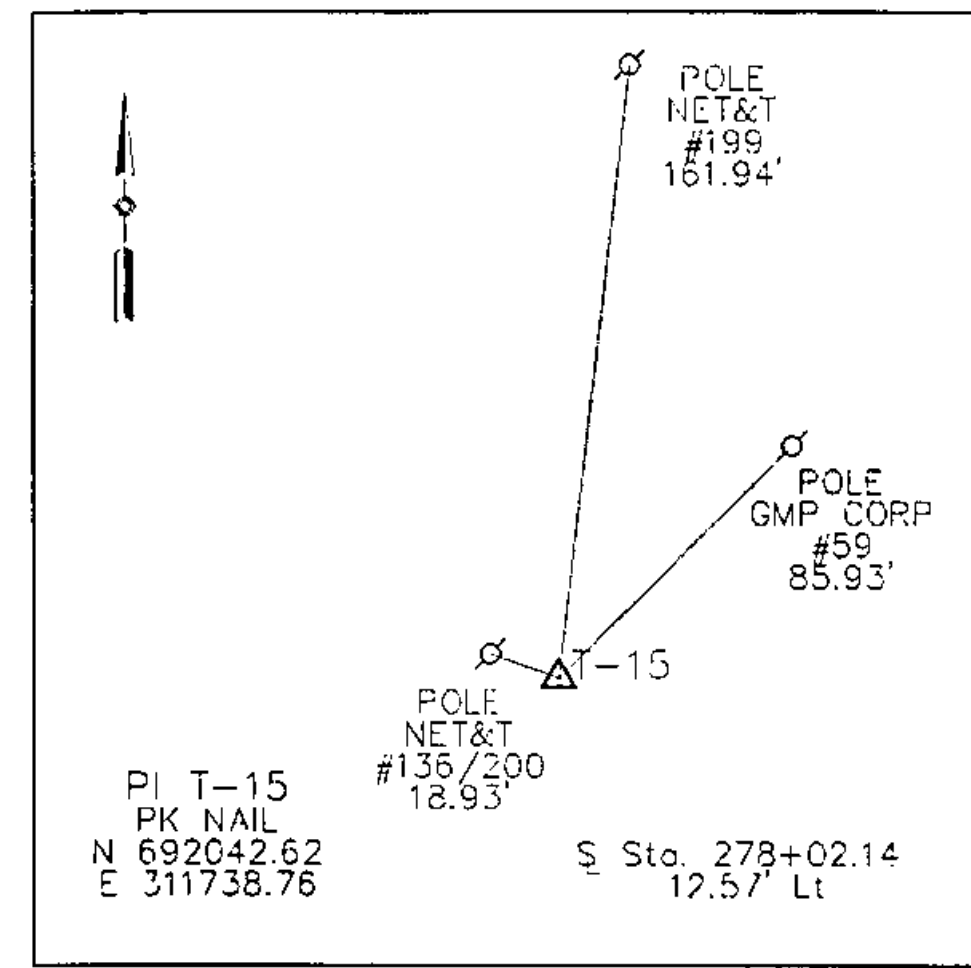
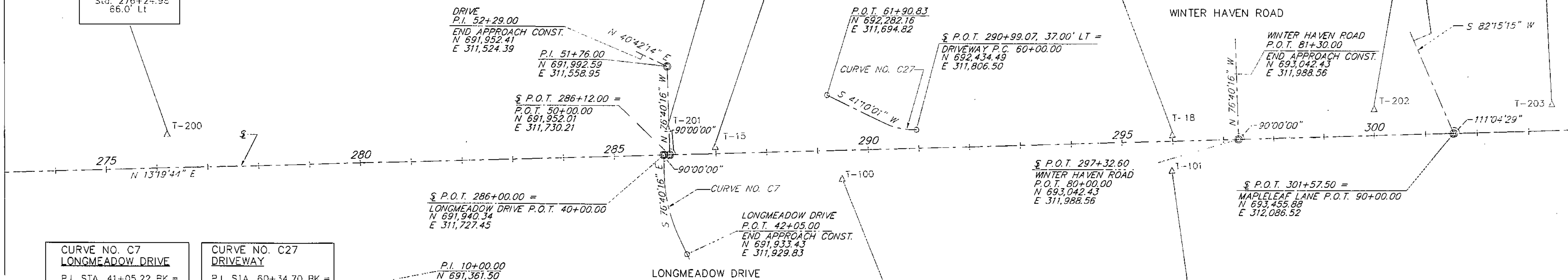


TABLE OF BENCHMARKS				
BM #	STATION	OFFSET	ELEVATION	DESCRIPTION
EAA BM 100	280+46	57' RT.	180.072	IS A RAILROAD SPIKE IN THE NE SIDE OF A 30" MAPLE ON THE EAST SIDE OF U.S. RTE 7, APPROX. 525 FEET SOUTH OF THE INTERSECTION OF U.S. ROUTE 7 AND LONGMEADOW DRIVE.
EAA BM 2	281+08	31' RT.	182.206	IS A CHISELED "X" IN THE SOUTH CAP BOLT OF A FIRE HYDRANT MARKED 11 R IN BLACK, LOCATED ON THE EAST SIDE OF U.S. RTE 7, APPROX. 500 FEET SOUTH OF THE INTERSECTION OF U.S. ROUTE 7 AND LONGMEADOW DRIVE.
EAA BM 3	294+23	35' RT.	170.277	IS A RAILROAD SPIKE IN POLE GMP 54, LOCATED ON THE EAST SIDE OF U.S. RTE 7, APPROX. 625 FEET NORTH OF THE INTERSECTION OF U.S. ROUTE 7 AND LONGMEADOW DRIVE AND OPPOSITE THE SOUTH ENTRANCE OF "YANKEE DOODLE MOTEL".
EAA BM 101	293+05	69' RT.	169.738	IS A RAILROAD SPIKE SET IN THE NW SIDE OF AN 18" SPRUCE ON THE EAST SIDE OF U.S. RTE 7, APPROX. 130 FEET SOUTH OF THE INTERSECTION OF U.S. ROUTE 7 AND CEDAR HAVEN ROAD.



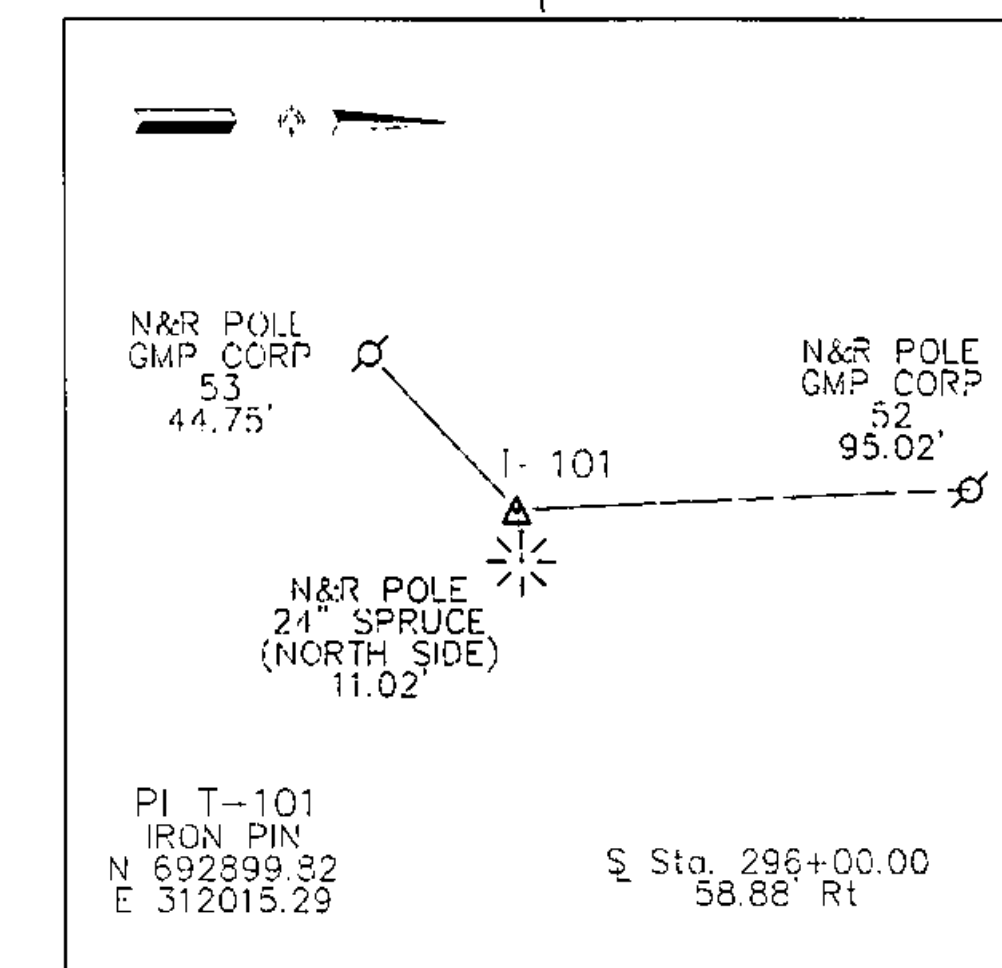
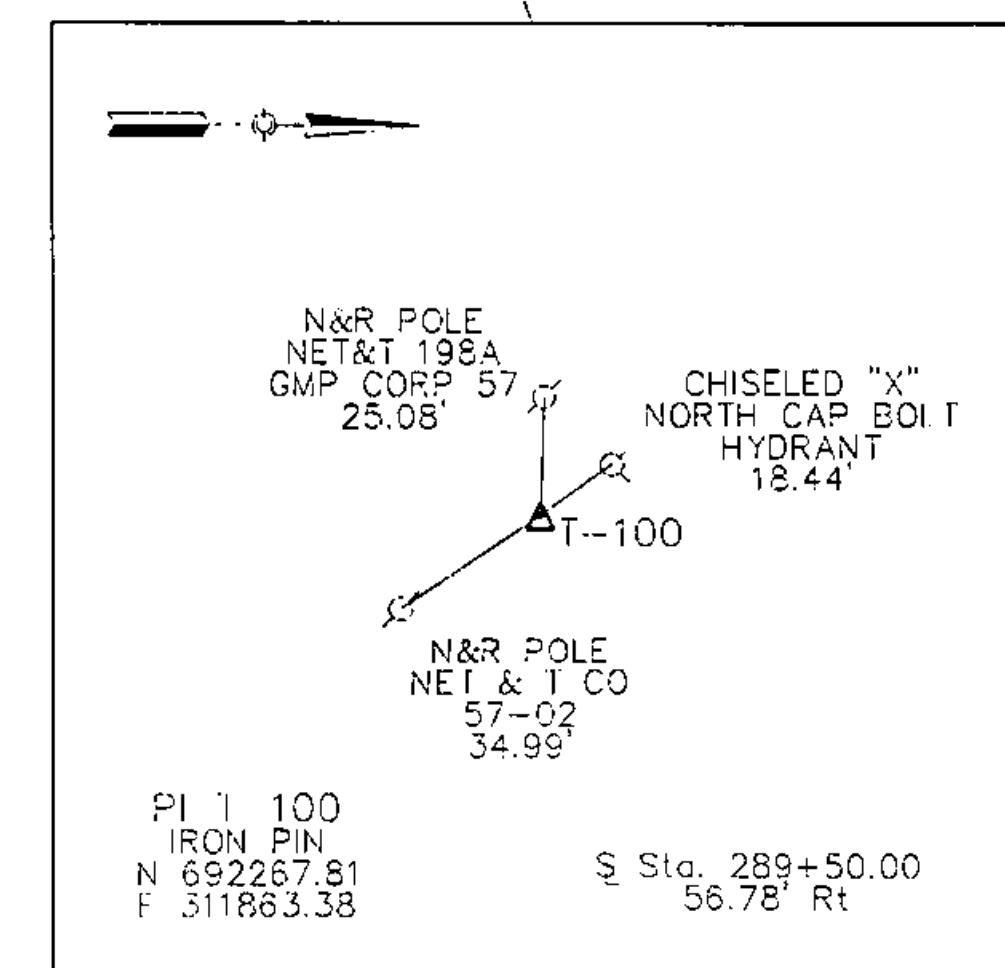
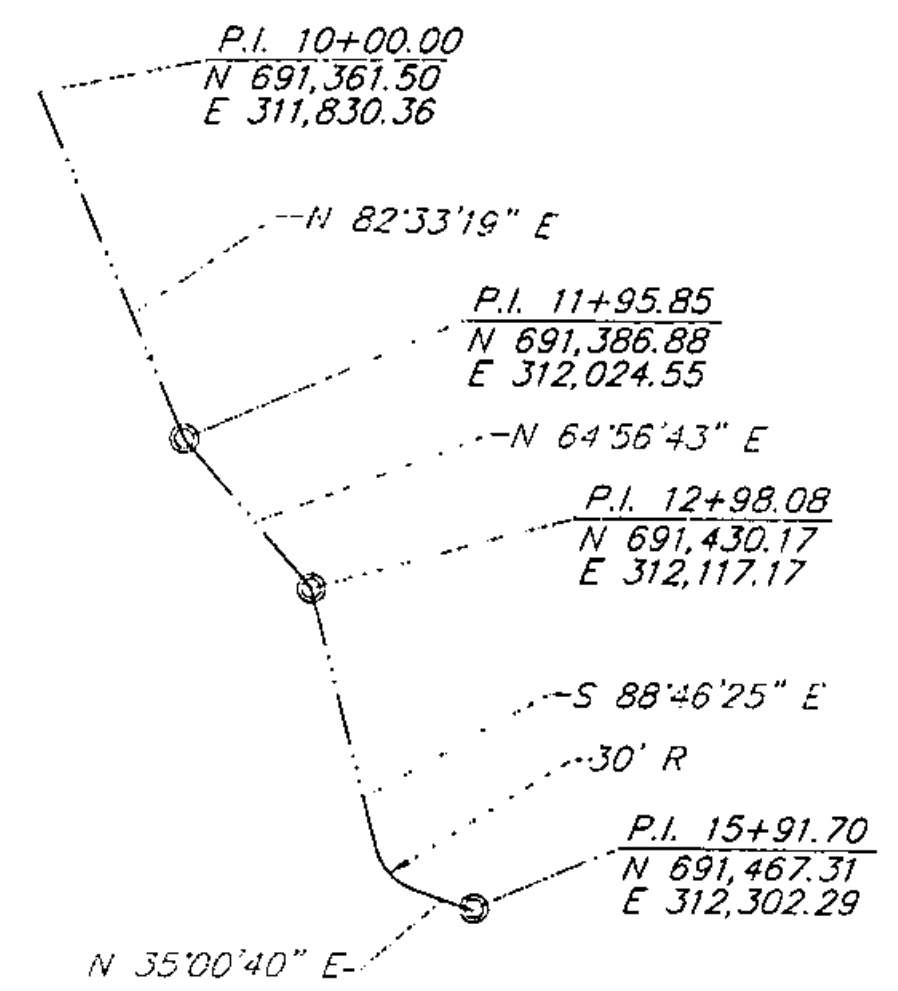
MATCH TO ALIGNMENT DRAWING NO. 1
STA. 273+00

MATCH TO ALIGNMENT DRAWING NO. 3
STA. 304+00



**CURVE NO. C7
LONGMEADOW DRIVE**
 P.I. STA. 41+05.22 BK. = STA. 41+03.51 AHD.
 N 691,916.08
 E 311,829.84
 $\Delta = 23^\circ 10' 20''$
 D = 18' 47' 09"
 R = 305.00'
 L = 123.35'
 T = 62.53'
 E = 6.34'
 P.C. STA. 40+24.69
 N 691,930.49
 E 311,768.99
 P.T. STA. 44+66.04
 N 691,926.77
 E 311,891.45

**CURVE NO. C27
DRIVEWAY**
 P.I. STA. 60+34.70 BK. = STA. 60+33.32 AHD.
 N 692,400.73
 E 311,798.50
 $\Delta = 27^\circ 50' 17''$
 D = 40' 55' 32"
 R = 140.00'
 L = 68.02'
 T = 34.70'
 E = 4.24'
 P.C. STA. 60+00.00
 N 692,434.49
 E 311,806.50
 P.T. STA. 60+68.02
 N 692,374.61
 E 311,775.66



NOTE:
 HORIZONTAL DATUM IS NAD 1927
 FROM VERMONT AGENCY OF TRANSPORTATION, VT.
 TRANSVERSE MERCATOR PROJECTION. (1946)
 GRID SCALE FACTOR = 1.000000
 SEA LEVEL FACTOR USED (187.0') = 0.9999911

DATUM
 VERTICAL NGVD 1929
 HORIZONTAL NAD 1927

SHELBOURNE
 SURVEYED BY V.S.C. INC. DATE _____
 DRAWN BY E.A.A. INC. DATE _____
 TRACED BY E.A.A. INC. DATE _____
 PROJECT NH-EGC-019-4(27)
 ALIGNMENT DRAWING NO. 2
 SHEET NO. 15 OF 537

