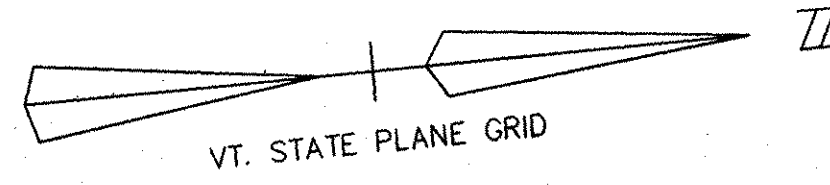


CRANE, EDWARD B., Trustee,
EDWARD B. CRANE LIVING TRUST



TWO O'BRIENS PROPERTIES, LLC

CRANE, EDWARD B.

(E)P38-01/VZ95A
Install Remove
20' OF 3#
1/0 QUAD
SEC &
20' OF 1# #2
TRI SEC OFF
BACK SPANS

(N&R)P37/VZ94
Install Remove Transfer
50' #2 POLE
1-SGL X-ARM
158' OF 477 3#
PRI & 4/0 NEUT
1-3# BANK
3-15S + 3-CO
@120/208
1-(SO) ANCH &
GUY FOR SEC
1-SEC D.E.
40' POLE
1-SGL X-ARM
140' OF 3# 336
PRI & 1/0
NEUT
140' OF 1/0
QUAD SEC
2-SEC D.E.
1-NEUT BKT
1-ST LIGHT
SEE TRANSFER WORK
FOR 1-UNG CUSTOMER
SERVICES

(N&R)P36/VZ93
Install Remove Transfer
50' #2 POLE
1-SGL X-ARM
1-3# BANK
3-15S + 3-CO @
120/208
177' OF 477 3#
PRI & 4/0 NEUT
1-NEUT BKT
45' POLE
1-DBL X-ARM
1-3# BANK
3-25S + 3-CO
@ 120/208
150' OF 477 3#
PRI & 4/0
NEUT
1-SEC D.E.
1-NEUT BKT
SEE TRANSFER WORK
FOR 2-UNG CUSTOMER
SERVICES

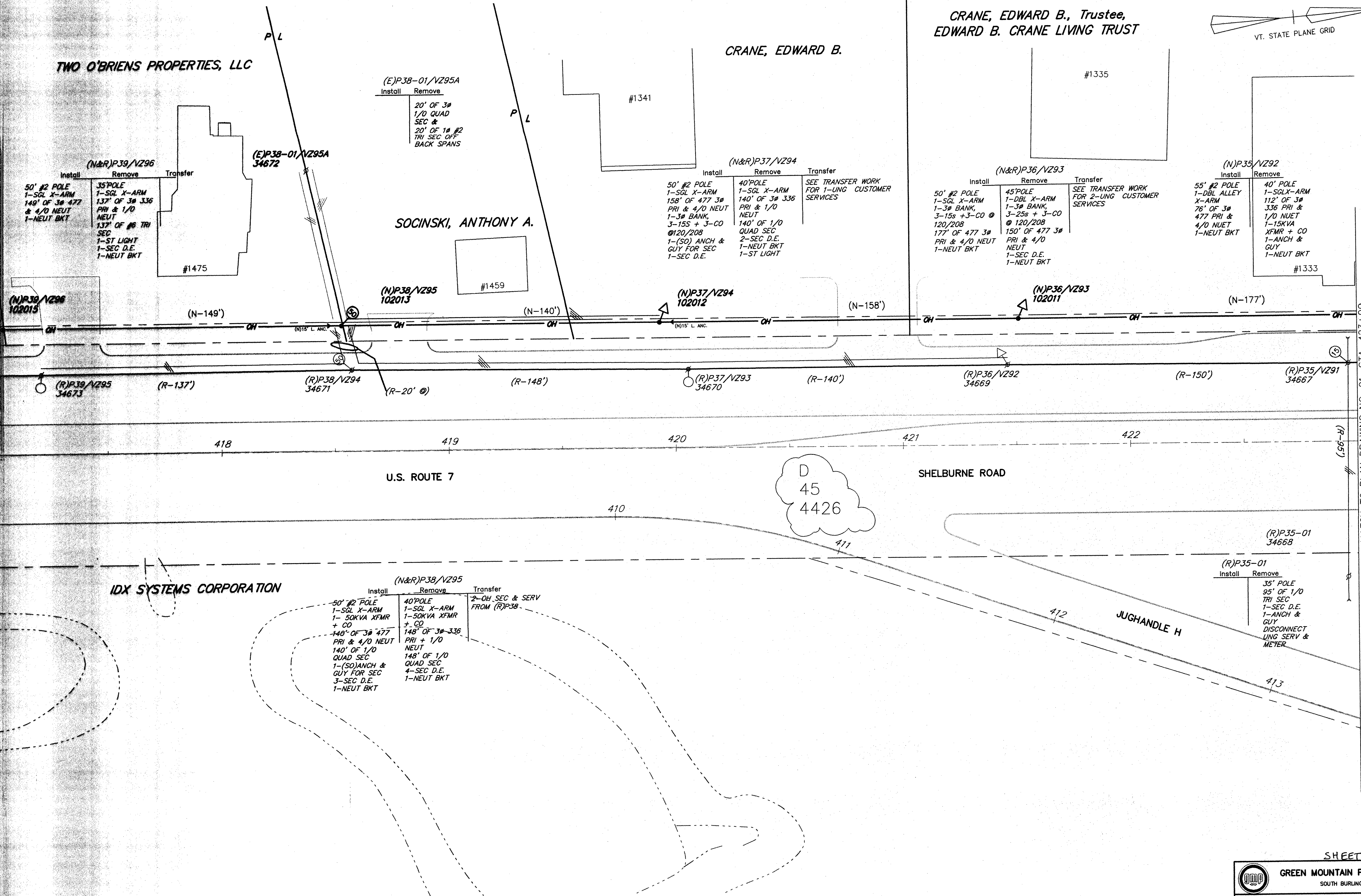
(N)P35/VZ92
Install Remove
55' #2 POLE
1-DBL ALLEY
X-ARM
76' OF 3#
477 PRI &
4/0 NEUT
1-NEUT BKT
40' POLE
1-SGL X-ARM
112' OF 3#
336 PRI &
1/0 NEUT
1-15KVA
XFMR + CO
1-ANCH &
GUY
1-NEUT BKT

SOCINSKI, ANTHONY A.

(N&R)P39/VZ96
Install Remove Transfer
50' #2 POLE
1-SGL X-ARM
149' OF 3# 477
& 4/0 NEUT
1-NEUT BKT
35' POLE
1-SGL X-ARM
137' OF 3# 336
PRI & 1/0
NEUT
137' OF #8 TRI
SEC
1-ST LIGHT
1-SEC D.E.
1-NEUT BKT

MATCH TO PLAN DRAWING NO. 19, STA. 417+00

MATCH TO PLAN DRAWING NO. 21, STA. 423+00



(N&R)P38/VZ95
Install Remove Transfer
50' #2 POLE
1-SGL X-ARM
1-50KVA XFMR
+ CO
148' OF 3# 477
PRI & 4/0 NEUT
140' OF 1/0
QUAD SEC
1-(SO) ANCH &
GUY FOR SEC
3-SEC D.E.
1-NEUT BKT
40' POLE
1-SGL X-ARM
1-50KVA XFMR
+ CO
148' OF 3# 336
PRI + 1/0
NEUT
148' OF 1/0
QUAD SEC
4-SEC D.E.
1-NEUT BKT
OH SEC & SERV
FROM (R)P38

(R)P35-01
Install Remove
35' POLE
95' OF 1/0
TRI SEC
1-SEC D.E.
1-ANCH &
GUY
DISCONNECT
UNG SERV &
METER

SHEET 281 OF 283

GREEN MOUNTAIN POWER CORPORATION SOUTH BURLINGTON, VERMONT			
12470Y 4W 3PH FEEDER			
32G4 OVERHEAD			
SHELBURNE ROAD RECONSTRUCTION			
DRAWN: LAW	CHECKED: MM	APPROVED: WH	SCALE: 1"=20'
DATE: 6-21-02	DRAWING NO: PL-31_4_20	SHEET: 20	

ROUTE 7 "PHASE-1" JOB ITEM # ARE-00712-86124
DRAWINGS/DISTRB/ROUTE7/RECEIVED 3-4-02/A0054591101