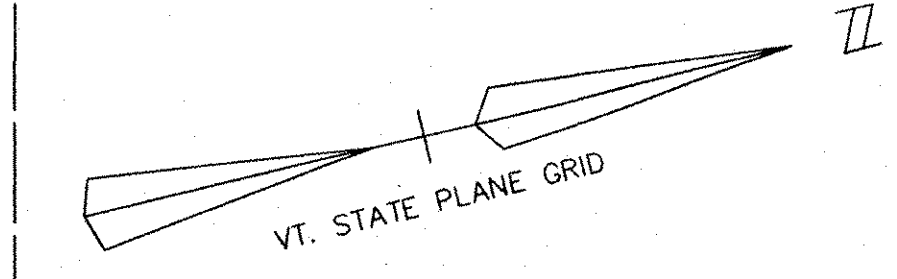


HANDY, PAUL L. & CATHERINE M.

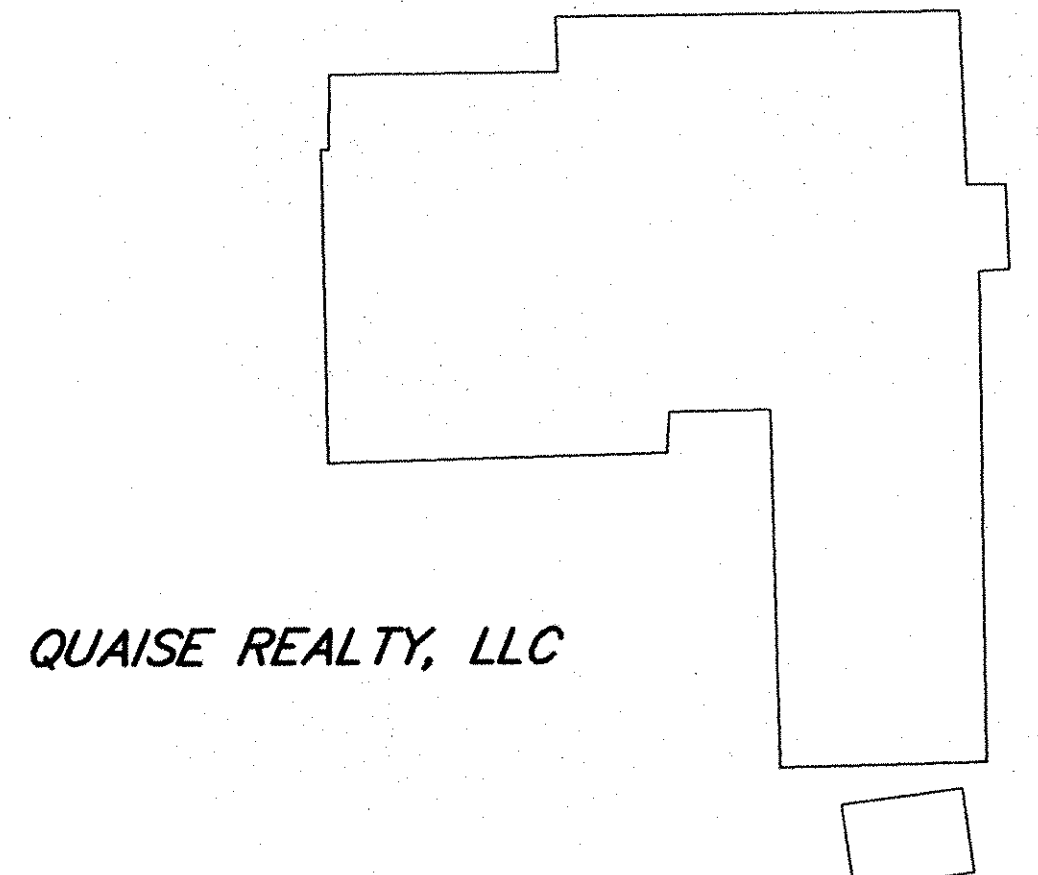
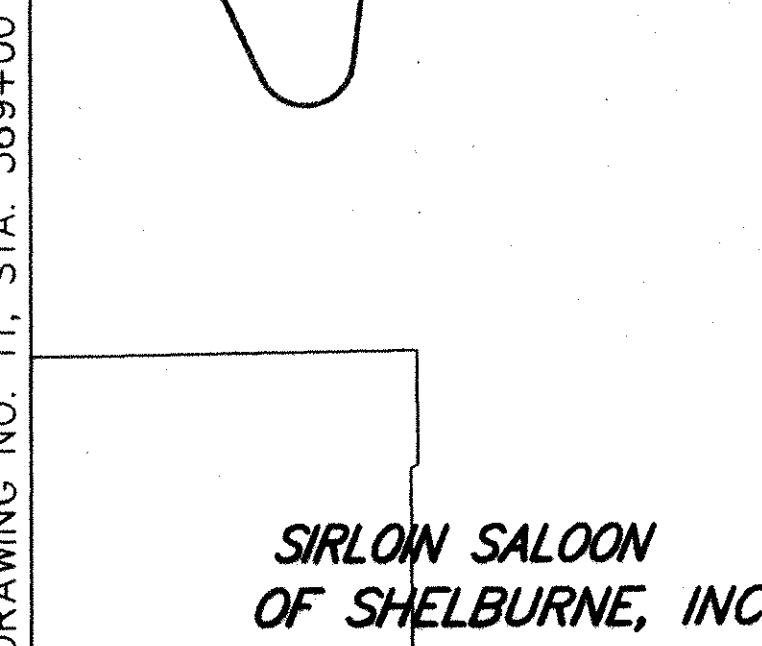
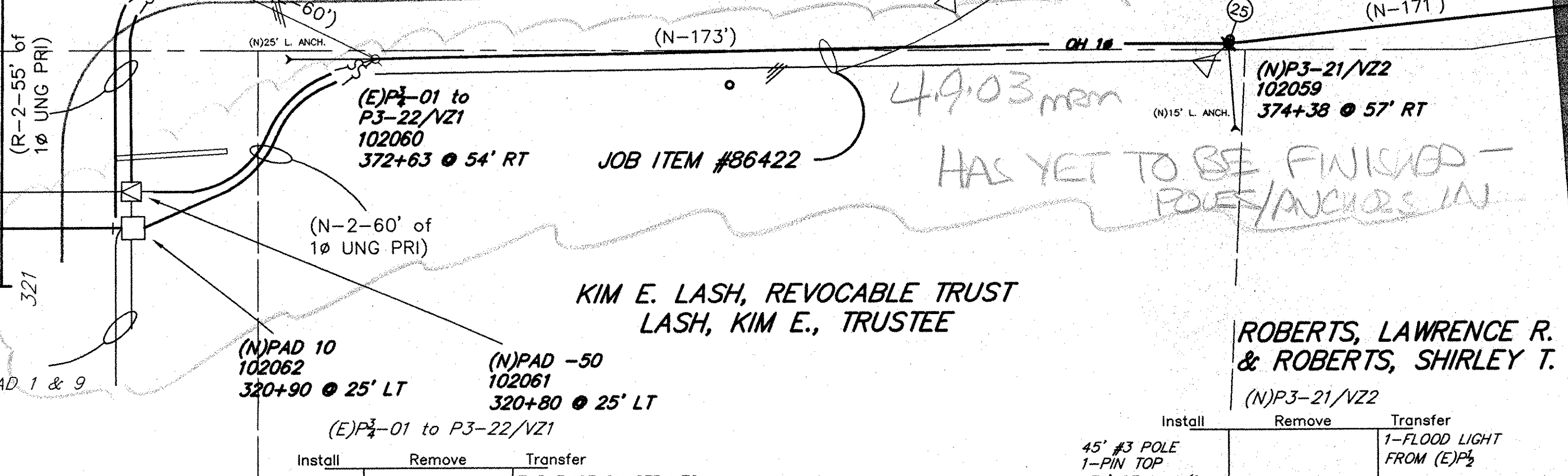
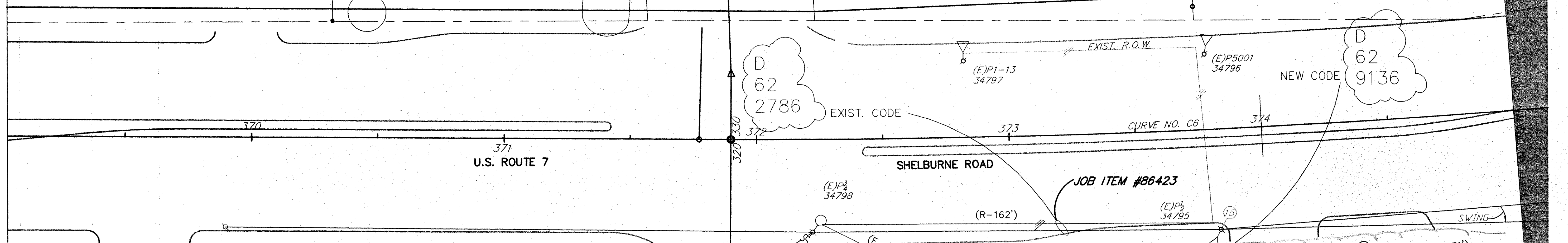


PINE HAVEN SHORES ROAD

Install	Remove	Transfer
	2-3" PRI UNG RISERS + 2-C/O & ARR	SWING UNG SEC FOR LIGHTS INTO (N)PAD -50
	1-1 1/2" SEC RISER	

CLIMB HIGH, INC.

Install	Remove	Transfer
	162' OF #4 TRI SEC	SWING OH PRI AND NEUT OF (R)P1/4 TO (N)P3-11
	1-15KVA XFMR + C/O	1-FLOOD LIGHT TO (N)P3-21



LOCUST HILL DEVELOPMENT, INC.

KIM E. LASH, REVOCABLE TRUST LASH, KIM E., TRUSTEE

ROBERTS, LAWRENCE R. & ROBERTS, SHIRLEY T.

NOTE: INSTALL 2-3" 1# UNG PRI DUCT OUT OF MTC & 1-3" SEC DUCT OUT OF P/M XFMR FOR FUTURE SEC/SERV

49.03 mm  
HAS YET TO BE FINISHED - POLES/ANCHORS IN

Install	Remove	Transfer
	2-55' RUNS OF 1# PRI UNG	EXPOSE/CUT/SWING 2-EXIST 1# UNG PRI INTO NEW UNITS

Install	Remove	Transfer
1-1# OH PRI D.E. 173' OF OH 1# 1/O PRI & NEUT 173' OF 1/O TRI OH SEC	1-2" SERV RISER	TAP EXIST OH SERV TO NEW SEC UNG SERV INTO (N)PAD -50
2-3" 1# UNG PRI RISERS + 2-C/O & ARR & FUSE AT 65K 1-(JO) ANCH & GUY 1-NEUT D.E.		

Install	Remove	Transfer
1-RUNS OF 1# UNG PRI & NEUT 1-25KVA 1# PAD XFMR + 2-LB ELBOWS		EXPOSE/CUT/SWING 1# UNG PRI VERIZON UNG SERV & DUCT OFF P3-22 UNG SEC TO LIGHTS OFF P3

Install	Remove	Transfer
45' #3 POLE 1-PIN TOP 171' OF 1# 1/O OH PRI & NEUT 1-25KVA OH XFMR + C/O 1-(JO) ANCH & GUY 1-NEUT BKT		1-FLOOD LIGHT FROM (E)P5

Install	Remove	Transfer
1-RUN OF 1# UNG PRI & NEUT 1-1# MTC UNIT + 2-LB ELBOWS		EXPOSE/CUT/SWING 1# UNG PRI

NOTE: GMP TO TRENCH/DUCT/BACKFILL AS REQ'D

MATCH TO PLAN DRAWING NO. 11, STA. 369+00

SHEET 272 OF 283

<p>GREEN MOUNTAIN POWER CORPORATION SOUTH BURLINGTON, VERMONT</p>			
12470Y 4W 3PH FEEDER			
<h2>32G4 OVERHEAD</h2>			
SHELBURNE ROAD RECONSTRUCTION			
DRAWN: LAW	CHECKED: MM	APPROVED: WH	SCALE: 1"=20'
DATE: 9-17-02	DRAWING NO. PL-23_4_12		SHEET: 12

ROUTE 7 "PHASE-1" JOB ITEM # ARE-00712-86423 & 86422 DRAWINGS/DISTRIB/ROUTE/RECEIVED 3-4-02/A0054591101