

#1485 SHEL.B. RD.  
GOSS DODGE  
TWO GAS SERVICES

HOAR, DOUGLAS W. & CHERYL A.

GOSS DODGE  
TWO GAS SERVICES

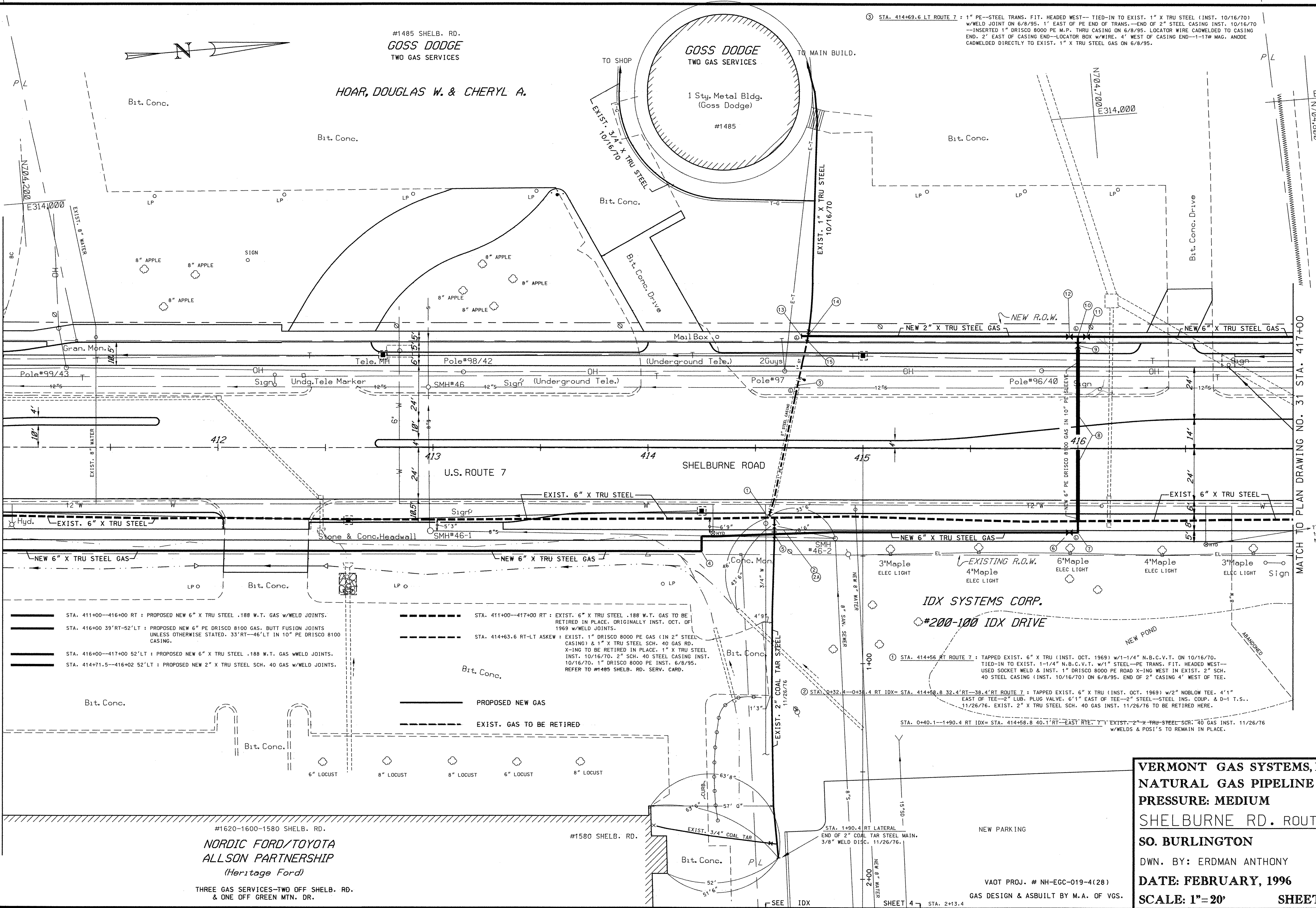
1 Sty. Metal Bldg.  
(Goss Dodge)

#1485

③ STA. 414+69.6 LT ROUTE 7 : 1" PE--STEEL TRANS. FIT. HEADED WEST-- TIED-IN TO EXIST. 1" X TRU STEEL (INST. 10/16/70)  
W/WELD JOINT ON 6/8/95. 1' EAST OF PE END OF TRANS.--END OF 2" STEEL CASING INST. 10/16/70  
--INSERTED 1" DRISCO 8000 PE M.P. THRU CASING ON 6/8/95. LOCATOR WIRE CADWELDED TO CASING  
END. 2' EAST OF CASING END--LOCATOR BOX W/WIRE. 4' WEST OF CASING END--1-1/4" MAG. ANODE  
CADWELDED DIRECTLY TO EXIST. 1" X TRU STEEL GAS ON 6/8/95.

MATCH TO PLAN DRAWING NO. 29 STA. 411+00

MATCH TO PLAN DRAWING NO. 31 STA. 417+00



- STA. 411+00—416+00 RT : PROPOSED NEW 6" X TRU STEEL .188 W.T. GAS W/WELD JOINTS.
- STA. 416+00 39'RT-52'LT : PROPOSED NEW 6" PE DRISCO 8100 GAS. BUTT FUSION JOINTS UNLESS OTHERWISE STATED. 33'RT--46'LT IN 10" PE DRISCO 8100 CASING.
- STA. 416+00--417+00 52'LT : PROPOSED NEW 6" X TRU STEEL .188 W.T. GAS W/WELD JOINTS.
- STA. 414+71.5--416+02 52'LT : PROPOSED NEW 2" X TRU STEEL SCH. 40 GAS W/WELD JOINTS.

- STA. 411+00--417+00 RT : EXIST. 6" X TRU STEEL .188 W.T. GAS TO BE RETIRED IN PLACE. ORIGINALLY INST. OCT. OF 1969 W/WELD JOINTS.
- STA. 414+63.6 RT-LT ASKEW : EXIST. 1" DRISCO 8000 PE GAS (IN 2" STEEL CASING) & 1" X TRU STEEL SCH. 40 GAS RD. X-ING TO BE RETIRED IN PLACE. 1" X TRU STEEL INST. 10/16/70. 2" SCH. 40 STEEL CASING INST. 10/16/70. 1" DRISCO 8000 PE INST. 6/8/95. REFER TO #1485 SHEL.B. RD. SERV. CARD.

- PROPOSED NEW GAS
- EXIST. GAS TO BE RETIRED

IDX SYSTEMS CORP.  
#200-100 IDX DRIVE

- ① STA. 414+56 RT ROUTE 7 : TAPPED EXIST. 6" X TRU (INST. OCT. 1969) W/1-1/4" N.B.C.V.T. ON 10/16/70. TIED-IN TO EXIST. 1-1/4" N.B.C.V.T. W/1" STEEL--PE TRANS. FIT. HEADED WEST-- USED SOCKET WELD & INST. 1" DRISCO 8000 PE ROAD X-ING WEST IN EXIST. 2" SCH. 40 STEEL CASING (INST. 10/16/70) ON 6/8/95. END OF 2" CASING 4' WEST OF TEE.
- ② STA. 0+32.4--0+38.4 RT IDX= STA. 414+58.8 32.4'RT--38.4'RT ROUTE 7 : TAPPED EXIST. 6" X TRU (INST. OCT. 1969) W/2" NOBLOW TEE. 4'1" EAST OF TEE--2" LUB. PLUG VALVE. 6'1" EAST OF TEE--2" STEEL--STEEL INS. COUP. & D-1 T.S.. 11/26/76. EXIST. 2" X TRU STEEL SCH. 40 GAS INST. 11/26/76 TO BE RETIRED HERE.
- STA. 0+40.1--1+90.4 RT IDX= STA. 414+58.8 40.1'RT--EAST RTE. Y : EXIST. 2" X TRU STEEL SCH. 40 GAS INST. 11/26/76 W/WELDS & POSI'S TO REMAIN IN PLACE.

#1620-1600-1580 SHEL.B. RD.  
NORDIC FORD/TOYOTA  
ALLSON PARTNERSHIP  
(Heritage Ford)  
THREE GAS SERVICES--TWO OFF SHEL.B. RD.  
& ONE OFF GREEN MTN. DR.

#1580 SHEL.B. RD.

VERMONT GAS SYSTEMS, INC.  
NATURAL GAS PIPELINE  
PRESSURE: MEDIUM  
SHELBURNE RD. ROUTE 7  
SO. BURLINGTON  
DWN. BY: ERDMAN ANTHONY  
DATE: FEBRUARY, 1996  
SCALE: 1"=20' SHEET: 30

VAOT PROJ. # NH-EGC-019-4(28)  
GAS DESIGN & ASBUILT BY M.A. OF VGS.

SHEET 4 STA. 2+13.4