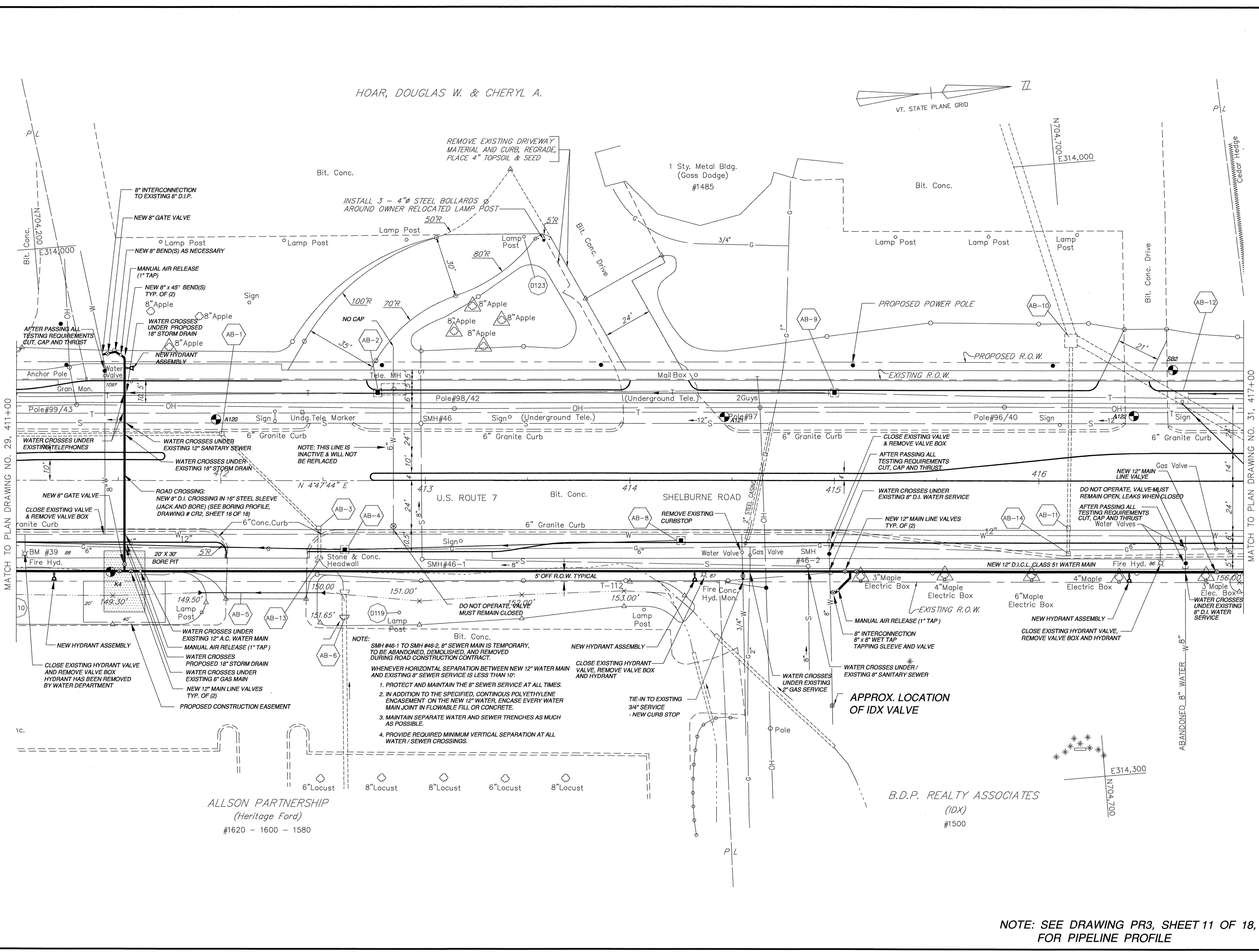
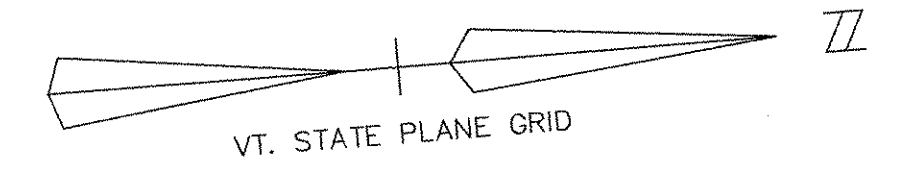


Dedicated to Quality
 Water and Service



SCALE: 1" = 20'
 0 10' 20' 40'

HOAR, DOUGLAS W. & CHERYL A.



- NOTE: SMH #46-1 TO SMH #46-2 8" SEWER MAIN IS TEMPORARY, TO BE ABANDONED, DEMOLISHED, AND REMOVED DURING ROAD CONSTRUCTION CONTRACT.
- WHENEVER HORIZONTAL SEPARATION BETWEEN NEW 12" WATER MAIN AND EXISTING 8" SEWER SERVICE IS LESS THAN 10":
1. PROTECT AND MAINTAIN THE 8" SEWER SERVICE AT ALL TIMES.
 2. IN ADDITION TO THE SPECIFIED, CONTINUOUS POLYETHYLENE ENCASUREMENT ON THE NEW 12" WATER, ENCASE EVERY WATER MAIN JOINT IN FLOWABLE FILL OR CONCRETE.
 3. MAINTAIN SEPARATE WATER AND SEWER TRENCHES AS MUCH AS POSSIBLE.
 4. PROVIDE REQUIRED MINIMUM VERTICAL SEPARATION AT ALL WATER / SEWER CROSSINGS.

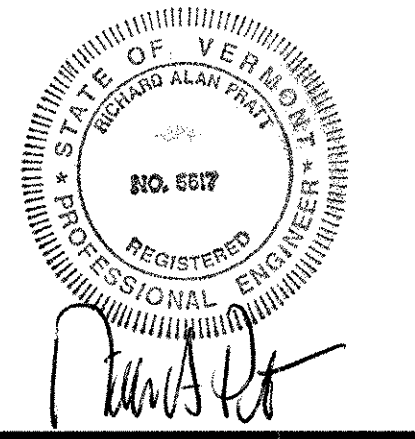
ALLSON PARTNERSHIP
 (Heritage Ford)
 #1620 - 1600 - 1580

B.D.P. REALTY ASSOCIATES
 (IDX)
 #1500

MATCH TO PLAN DRAWING NO. 31, 417+00

MATCH TO PLAN DRAWING NO. 29, 411+00

REVISIONS		
REV. #	DATE	BY



CONTRACT #63
 WATER MAIN RELOCATION
 U.S. ROUTE 7
 "SHELburne ROAD"
 SOUTH BURLINGTON,
 VERMONT
 PLAN VIEW
 STA. 411+00 TO 417+00

DATE:	APRIL, 2002
DESIGNED BY:	RAP
DRAWN BY:	EJP
CHECKED BY:	RAP
APPROVED BY:	RAP
FILE NAME:	2000_C63-pl6(30)
SHEET	10 OF 18
DRAWING No.	

NOTE: SEE DRAWING PR3, SHEET 11 OF 18,
 FOR PIPELINE PROFILE

PL6
 251 of 283