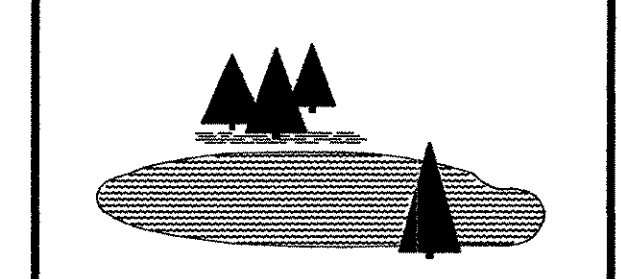
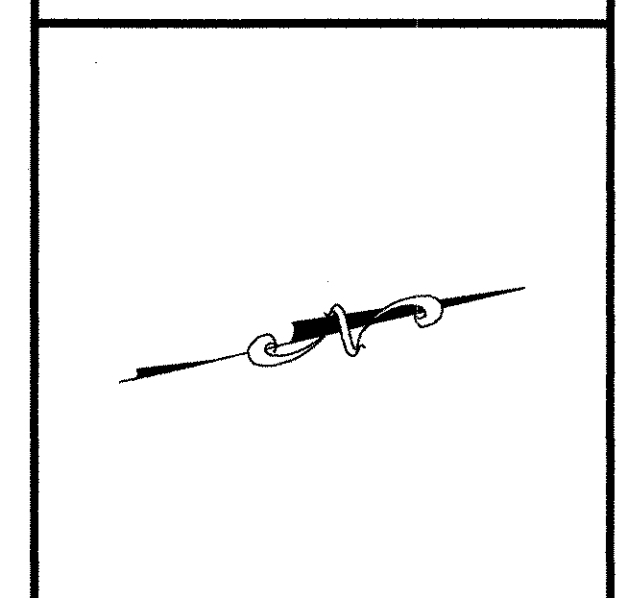


CHAMPLAIN WATER DISTRICT
 403 Queen City Park Road
 South Burlington, VT 05403
 Phone: (802) 864-7454
 Fax: (802) 864-0435

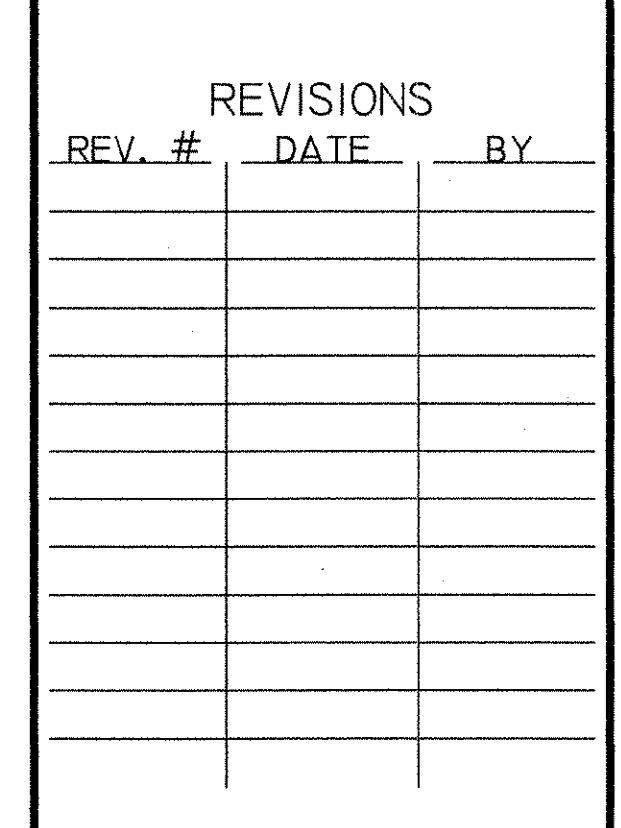


Dedicated to Quality
 Water and Service



REVISIONS

REV. #	DATE	BY



CONTRACT #63
 WATER MAIN RELOCATION
 U.S. ROUTE 7
 "SHELburne ROAD"
 SOUTH BURLINGTON,
 VERMONT

PLAN VIEW
 STA. 381+00 TO 387+00

DATE: APRIL, 2002
 DESIGNED BY: RAP
 DRAWN BY: EJP
 CHECKED BY: RAP
 APPROVED BY: RAP
 FILE NAME: 2000_C63-pl(25)
 SHEET 3 OF 18
 DRAWING No.

PLI
 244 OF 283

NOTE: SEE DRAWING # PR1, SHEET 5 OF 18,
 FOR PIPELINE PROFILE