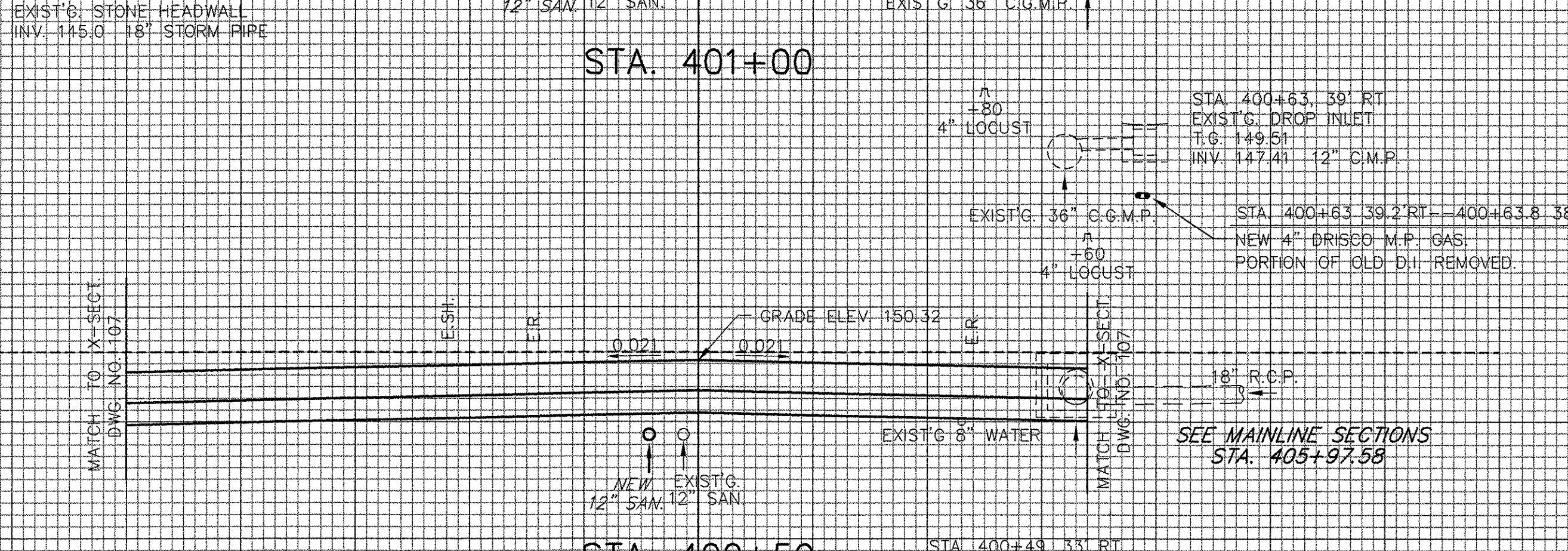
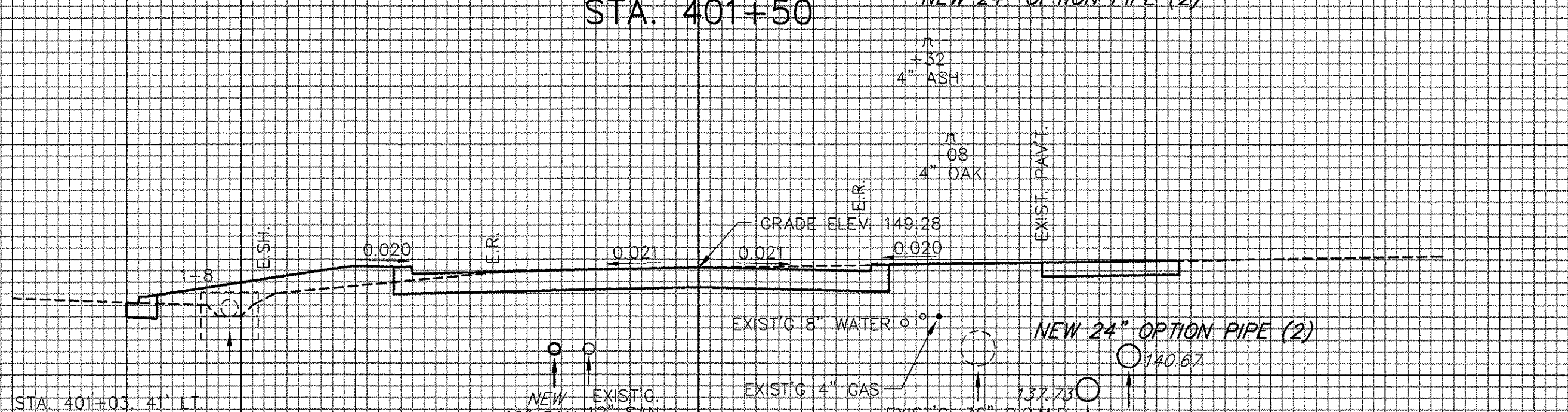
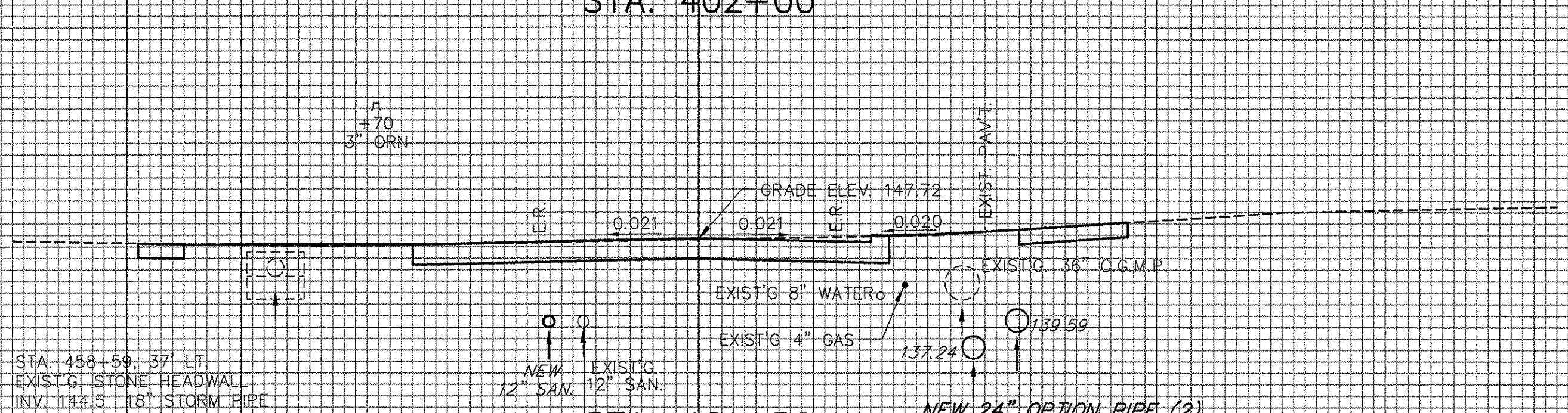
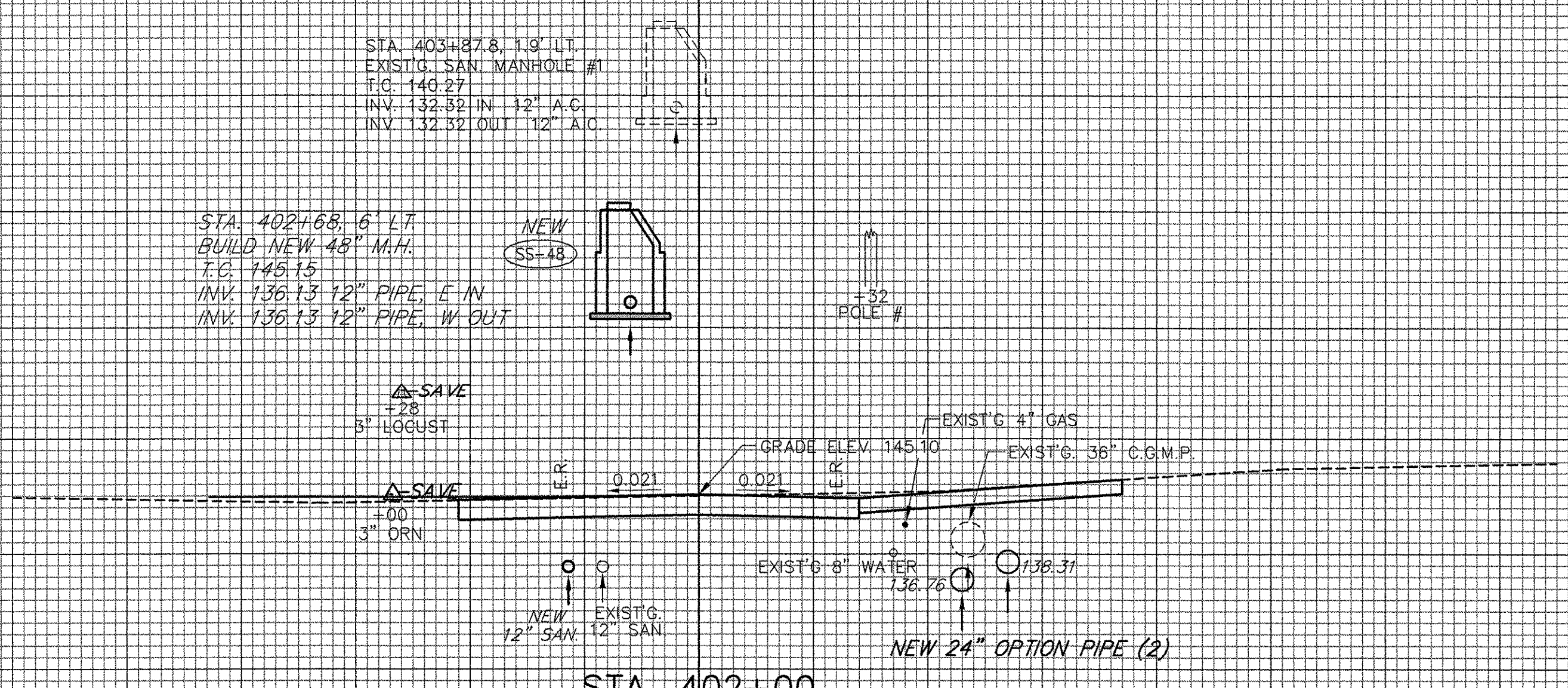
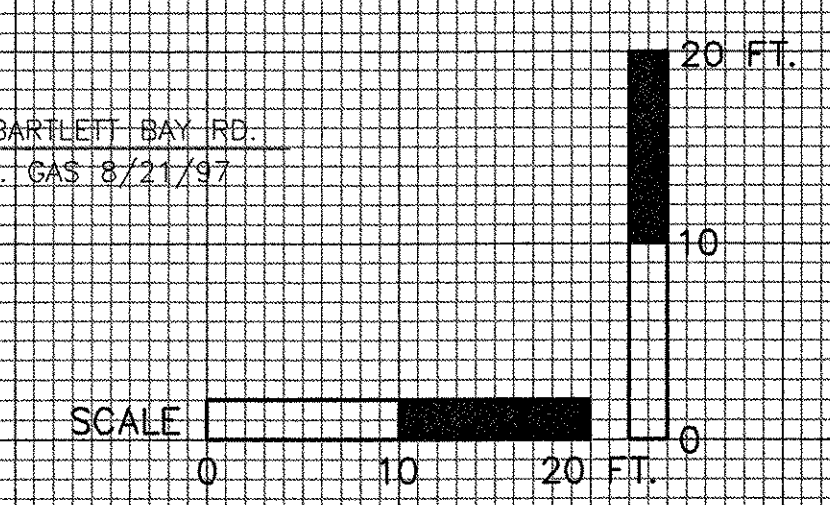


STA. 403+87.8, 1.9' LT.  
 EXIST'G. SAN. MANHOLE #1  
 T.C. 146.27  
 INV. 132.32 IN 12" A.C.  
 INV. 132.32 OUT 12" A.C.

STA. 402+68, 6' LT.  
 BUILD NEW 48" M.H.  
 T.C. 145.15  
 INV. 136.13 12" PIPE, E IN  
 INV. 136.13 12" PIPE, W OUT



STA. 400+71.85 RT-- WEST BARTLETT BAY RD.  
 NEW 4" DRISCO 8000 M.P. GAS 8/21/97



BARTLETT BAY ROAD

SHELBURNE -- SOUTH BURLINGTON  
 STA. 400+50 TO STA. 401+50  
 SURVEYED BY V.S.C. INC. DATE \_\_\_\_\_  
 DRAWN BY E.A.A. INC. DATE \_\_\_\_\_  
 TRACED BY E.A.A. INC. DATE \_\_\_\_\_  
 PROJECT NH-EGC-019-4(28)  
 CROSS-SECTION DWG. NO. 149  
 SHEET 221 OF 283