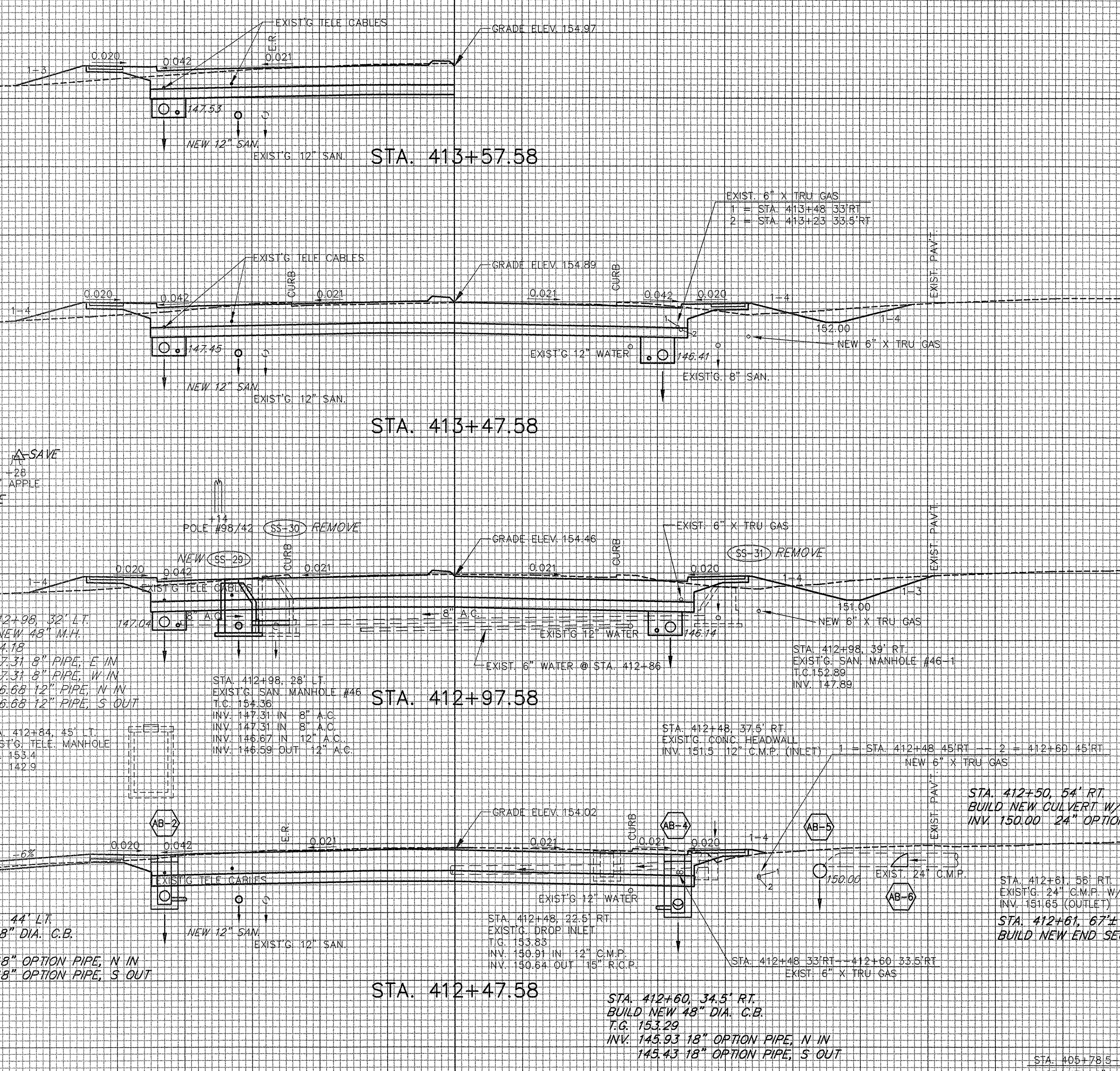


DATUM ELEV = 150.00

DATUM ELEV = 145.00

DATUM ELEV = 145.00

DATUM ELEV = 145.00



STA. 413+57.58

STA. 413+47.58

STA. 412+97.58

STA. 412+47.58

STA. 412+98, 32' LT.
 BUILD NEW 48" M.H.
 T.C. 154.18
 INV. 147.31 8" PIPE, E IN
 INV. 147.31 8" PIPE, W IN
 INV. 146.68 12" PIPE, W IN
 INV. 146.68 12" PIPE, S OUT

STA. 412+98, 28' LT.
 EXIST'G SAN MANHOLE #46
 T.C. 154.36
 INV. 147.31 IN 8" A.C.
 INV. 147.31 IN 8" A.C.
 INV. 146.67 IN 12" A.C.
 INV. 146.59 OUT 12" A.C.

STA. 412+84, 45' LT.
 EXIST'G TELE MANHOLE
 T.C. 153.4
 INV. 142.9

STA. 412+48, 37.5' RT.
 EXIST'G CONC. HEADWALL
 INV. 151.5 12" C.M.P. (INLET) 1 = STA. 412+48 45' RT. 2 = 412+60 45' RT.
 NEW 6" X TRU GAS

STA. 412+50, 54' RT.
 BUILD NEW CULVERT W/ END SECTION
 INV. 150.00 24" OPTION PIPE, (INLET)

STA. 412+61, 58' RT.
 EXIST'G 24" C.M.P. W/ END SECTION
 INV. 151.65 (OUTLET)
 STA. 412+61, 67' RT.
 BUILD NEW END SECTION

STA. 412+60, 34.5' RT.
 BUILD NEW 48" DIA. C.B.
 T.G. 153.29
 INV. 145.93 18" OPTION PIPE, N IN
 145.43 18" OPTION PIPE, S OUT

STA. 405+78.5 - 416+00 RT.
 INST. NEW 6" X TRU GAS

STA. 405+82.5 - 428+86 RT.
 EXIST. 6" X TRU GAS TO BE RETIRED IN PLACE

